

**WINTERLINE**



**HIGH PERFORMANCE  
SALT & GRIT SPREADERS**

**SNOWEX**  <sup>®</sup>  
Snow and ice control

*When only the best will do...*



DISTRIBUTED BY

The logo for WESSEX INTERNATIONAL, featuring a red square with a white stylized 'W' inside, followed by the word 'WESSEX' in a bold, green, sans-serif font. A large red checkmark is positioned behind the 'X', and the word 'INTERNATIONAL' is written in a smaller, green, sans-serif font below it.



## **MANUFACTURING EXCELLENCE SINCE 1962**

Since 1962 the Wessex name has been synonymous with superb quality, British built machines for the agricultural and groundcare markets. Our equipment is built for demanding applications, where reliability and durability are paramount.

### **DEALER NETWORK**

Wessex products are sold exclusively through the Wessex UK dealer and global distributor network. Our dealers have the market knowledge and experience to recommend the correct product for your application, and their in-house service and maintenance department provides a local centre for all your after service requirements.

### **WESSEX AFTER-SALES & SERVICE BACK-UP**

At Wessex International, our care for the customer does not stop at the time of machine purchase. Our dedicated after-sales team with their wealth of experience are here to tend to your needs throughout the working life of the machine. Whether it's machine operation, advice on application, or a technical question over maintenance, we're here to help.

### **2 YEAR WARRANTY**

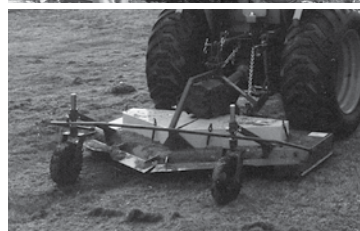
Selected products are available with a 2 year manufacturers warranty. These machines come with a standard one year warranty, and a further 1 year is available at no cost by simply completing an online registration via the website.

[www.wessexintl.com/  
warranty-registration/](http://www.wessexintl.com/warranty-registration/)



### **1962**

In the heart of rural Hampshire, Wessex began manufacturing grass cutting and forage equipment.



### **1970's**

Wessex were the first to manufacture a range of scaled down implements to suit the new compact tractor from Japan.



### **1980's**

Wessex increased their focus on equipment to meet the needs of landscapers and grounds maintenance contractors.



### **1990's**

As ATV's started to grow in popularity, Wessex produced a line-up of attachments to suit.



### **2003**

Broadwood International was established as the distributor of quality equipment including the well-known SnowEx salt spreaders & SweepEx push brooms.



### **2008**

Broadwood International acquired Wessex Machinery – now a leading manufacturer of professional grounds maintenance machinery.



### **2014**

In line with the increased focus on global distribution of the Wessex ProLine product range, the company has been renamed Wessex International. This coincides with relocation to the current 50,000sqft factory in Andover, Hampshire.



## THINK SNOWEX EQUIPMENT FOR SNOW AND ICE CONTROL!



**DESIGNED TO WITHSTAND THE  
HARSHEST OF WINTER CONDITIONS!**

### **WELCOME TO SNOWEX**

4

### **UTILITY SPREADERS**

6 - 7

SP-575X-1

SP-1575-1

SP-1875-1

Mounts

### **V-PRO SPREADERS**

8 - 9

V-Pro SP-2000

V-Pro SP-6000

Options

### **V-MAXX SPREADERS**

10 - 11

V-Maxx VX-1500

V-Maxx VX-2200

### **WESSEX WINTERLINE RANGE**

12

### **AFTERSALES**

13

### **SPREADER TECHNICAL SPECIFICATIONS**

14 - 15

*When only the best will do...*



# WELCOME TO SNOWEX

THE LEADER IN SNOW AND ICE CONTROL!

**SNOWEX** spreaders are the professional choice across the UK and Europe for efficient snow and ice control.

Designed and manufactured to perform in the harshest of environments, SnowEx is built tough. In-cab control units provide precise operation of spinners and augers, combining quality with accuracy, and enabling operators to prevent overspreading and material wastage.

SnowEx offers spreaders from 163 to 3200 litre capacity, and can be mounted on virtually any host vehicle from an ATV to large commercial vehicles. If you need help or advice on which SnowEx spreader is best suited to your application just contact Wessex International and we will be happy to provide expert advice.

With increasing Health & Safety legislation making demands on ice and snow control, we can offer you peace of mind with a SnowEx spreader.



**TAMESIDE METROPOLITAN BOROUGH COUNCIL TAKE DELIVERY OF A V-MAXX SP-9500**

## SEE THEM IN ACTION ON...



 **ATV'S**



## KEY FEATURES & BENEFITS

*ALL SNOWEX VEHICLE SPREADERS FEATURE:*

**12V DC DIRECT DRIVE MOTOR MOUNTED IN A WEATHER-TIGHT ENCLOSURE** – Reliable power in every situation

**HIGH DENSITY POLYETHYLENE, UV PROTECTED HOPPER IN SAFETY YELLOW** – Zero corrosion and reduced weight

**HEAVY DUTY MODULAR STEEL FRAME** – Strength built in as standard with electrostatic powder coat finish

**DRIVES** – Revolutionary maximum torque transmission featuring a hardened steel worm and bronze gear - no chains, pulleys, drive belts or gears to break or wear

**WEATHER AND FIRE-PROOF WIRING HARNESS** – for maximum reliability.

**STEEL AUGER FEED SYSTEM** – gives more positive and accurate supply to spinner than a conveyor belt feed system

**HIGH QUALITY POWDER COATED STEEL OR URETHANE SPINNERS**

**FULL SPARE PARTS BACK-UP ON ALL SNOWEX PRODUCTS.**



**SCAN  
HERE TO  
FIND OUT  
MORE**



*When only the best will do...*

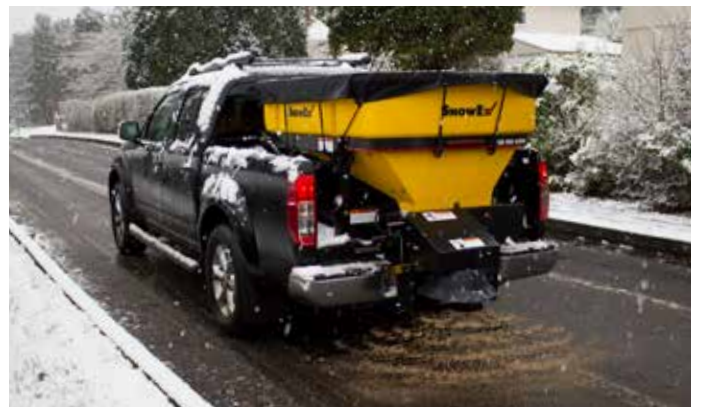


 **UTV'S**





 **4X4'S**



 **PICK-UPS**



 **TRUCKS**



 **TRAILERS**



 **TRACTORS**



 **FORKLIFTS**



 **PLUS, ANY VEHICLE THAT WILL TOW...**



# UTILITY SPREADERS

(SP-575X-1 / SP-1575-1 & SP-1875-1)

Three highly versatile **UTILITY SPREADERS**, which can be used in a variety of applications thanks to the wide range of mounting brackets available to suit commercial vehicles and 4x4's, utility vehicles, tractors, forklifts, or even a trailer mount for use behind an ATV.

**BUILT TO WORK – WINTER AFTER WINTER!**

## SPREADING MATERIALS GUIDE

	SP-575X-1	SP-1575-1	SP-1875-1
Dry free-flowing salt	–	✓ ▲	✓ ▲
Moist salt (Rock salt)	✓	✓	✓
Sand	–	–	✓
50:50 sand/salt mix	–	✓	✓
Bagged ice melters	✓ ▲	✓ ▲	✓ ▲

▲ if fitted with TRK kit

**Please note:** this chart is a general guide and not all-inclusive. Wessex International will not be held responsible for spreader / spread material incompatibility.

## UTILITY SPREADERS



SCAN  
HERE TO  
FIND OUT  
MORE



### SP-575X-1 – 163L

**RAISING THE STANDARD IN UTILITY SPREADERS!**

- 163 litre capacity
- Robust all-weather cover
- Top screen prevents larger chunks from entering hopper
- Variable spread width controller
- Vertical auger feeds direct onto disc
- Vibrator fitted as standard



### SP-1575-1 – 163L

**DESIGNED AND BUILT FOR THE CONTRACTOR!**

- 163 litre capacity
- Horizontal auger and offset disc for increased efficiency and versatility
- Dual variable speed/spread width controller
- Integral 3pt mounting hitch for compact tractors
- Vibrator fitted as standard



### SP-1875-1 – 254L

**HIGH CAPACITY UTILITY SPREADER FOR LARGER VEHICLES!**

- 254 litre capacity
- Horizontal auger and offset disc for increased efficiency and versatility
- Dual variable speed/spread width controller
- Vibrator fitted as standard



## TRK FLOW RESTRICTOR TUBES

Stainless steel flow restrictor tubes are available as an optional extra on the **SP-1575-1** and **SP-1875-1**, to prevent leakage of very free-flowing material.







## **MOUNTS FOR UTILITY SPREADERS (SP-575X-1 / & SP-1575-1)**

### **TOWBAR HITCH TBH-175**

Towbar hitch for commercial vehicles.



### **UTILITY MOUNT UTM-175**

Utility bed-mount.



### **FORKLIFT MOUNT FLM-175**

Industrial forklift mount.



### **THREE POINT HITCH TPM-175**

3 point hitch for compact tractor (standard fitment on SP-1575-1).



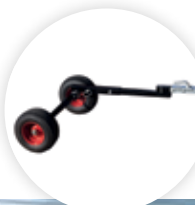
### **DROP UTILITY MOUNT DRM-175**

Drop utility mount reduces the height of the machine on the vehicle.



### **TRAILED MOUNT TLR-275**

Trailer mount converts the SnowEx into a trailed machine for an ATV etc.



## **MOUNTS FOR UTILITY SPREADERS (FOR SP-1875-1 ONLY)**

### **DROPSIDE MOUNT DSM-175**

Attaches the SP-1875-1 to vehicle tailgate



### **FORK SLEEVE MOUNT FSM-175**

Industrial forklift mount.



### **TRACTOR MOUNT TPM-275**

Three point hitch for a compact tractor.



### **PICK-UP TRUCK HITCH PUH-175**

Attaches to SP-1875-1 over the tail gate of a pick-up truck.



# V-PRO SPREADERS

(SP-2000 / SP-6000)

Two rugged **SNOWEX V-PRO** mounted spreaders which offer a revolutionary breakthrough in snow and ice control technology. With the hoppers entirely constructed of heavy duty polyethylene, **V-PRO** are considerably lighter than steel 'vee boxes'.



## SPREADING MATERIALS GUIDE

	SP-2000	SP-6000
Dry free-flowing salt	✓ ▲	✓ ▲
Moist salt (Rock salt)	✓	✓
Sand	✓ *	✓
50:50 sand/salt mix	✓ *	✓
Bagged ice melters	✓ ▲	✓ ▲

▲ if fitted with TRK kit \* if fitted with OFK-020

**Please note:** this chart is a general guide and not all-inclusive. Wessex International will not be held responsible for spreader / spread material incompatibility.



## V-PRO SPREADERS

### V-PRO SP-2000 – 300L



**THE BULK  
SPREADER FOR  
HEAVY DUTY  
UTILITY VEHICLES!**

- 300 litre capacity
- Full control of spread width and flow rate from comfort of vehicle cab
- Quick connect spinner assembly to allow towbar use when spreader not in service
- Dual variable spread/speed controller for precise control of spinner and auger independently
- 12V vibrator unit to help material flow
- Heavy-duty ratchet strap and adjustable rail mount system
- Fitted tarpaulin hopper cover

### V-PRO SP-6000 – 800L



**THE RUGGED  
SPREADER DESIGNED  
SPECIFICALLY FOR  
LARGER PICK-UPS AND  
FLAT-BED TRUCKS!**

- 800 litre capacity
- Full control of spread width and flow rate from comfort of vehicle cab
- Quick connect spinner assembly to allow towbar use when spreader not in service
- Dual variable spread/speed controller for precise control of spinner and auger independently
- 12V vibrator unit to help material flow
- Heavy-duty ratchet strap and adjustable rail mount system
- Fitted tarpaulin hopper cover



## OPTIONAL TRAILER VPT-150

- For use with SP-2000 and SP-6000
- Ideal for work on the public highway – full road legal specifications including lights, overrun brakes, suspension and hand brake
- Frees up the pick-up bed for other duties
- Retains unique SnowEx features of on-the-move spread width and speed control - spreader loom extension included
- Ready to hitch up and go when required
- No vehicle tachograph normally required

**V-PRO SPREADERS CAN BE MOUNTED ON TO  
THE BESPOKE SNOWEX TRAILER; IDEAL FOR  
HIGHWAY SERVICE.**



**FULLY  
ROAD  
LEGAL**

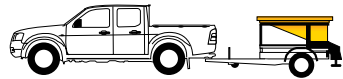


# V-PRO SPREADERS

(SP-2000 / SP-6000)



SP-2000



SP-2000 WITH VPT-150 TRAILER



SP-6000



SP-6000 WITH VPT-150 TRAILER



## KEY

### 1 POLYETHYLENE HOPPER CONSTRUCTION

- Eliminates corrosion.
- Is considerably lighter when compared to steel, making full use of the vehicle's payload.
- Prolongs the life of the equipment.

### 2 PATENTED MULTI-ANGLED HOPPER

- Allows effective flow of material.
- Spreads up to a 50/50 salt/sand mix with optional Optimal Flow Kit.

### 3 12-VOLT ELECTRIC DRIVE SYSTEM

- Offers low maintenance electric motor and drive, enclosed in single sealed unit.
- Features only one grease fitting.
- Requires no pulleys, sprockets, belts or chains.

### 4 INDEPENDENT SPINNER AND AUGER CONTROL

- Controls spinner and auger independently for optimum material spread and feed.
- Provides consistent positive feed of salt or salt/sand mixture.
- Provides infinitely adjustable control with digital read-out.
- Controls all functions from single controller, located inside the cab of the vehicle.

### 5 QUICK-CONNECT SPINNER ASSEMBLY

- Designed for easy installation and removal.
- Allows use of towbar hitch when removed.

### 6 TOP SCREEN

- Prevents large frozen chunks of material from entering hopper.

### 7 FITTED TARP

- Provides protection from water ingress, for clog-free distribution of material.

### 8 NON-COMBUSTIBLE HD AUTOMOTIVE HARNESS

- Provides precise installation for risk-free wiring.

### 9 OPTIMUM FLOW KIT OFK-020

The optimum flow kit accessory is a requirement for spreading sand or a sand/salt mix. Along with a dual pitch baffle, the additional vibrator improves material flow of difficult-to-spread materials.



SCAN  
HERE TO  
FIND OUT  
MORE  
V-PRO



# V-MAXX SPREADERS

(VX-1500 / VX-2200)

**SNOWEX V-MAXX** is the undisputed champion of spreading. Built to uncompromising standards with proven reliability in the most demanding environments, the **V-MAXX** is the spreader of choice for local authorities, highway maintenance contractors and commercial applications across the UK and Europe.

Both models are complete with an in-cab dual variable-speed controller, for independent speed adjustment of the spinner and auger. Using this digital controller allows for precise material placement.



## SPREADING MATERIALS GUIDE

	VX-1500	VX-2200
Dry free-flowing salt	–	–
Moist salt (Rock salt)	✓	✓
Sand	✓	✓
50:50 sand/salt mix	✓	✓
Bagged ice melters	–	–

**Please note:** this chart is a general guide and not all-inclusive. Wessex International will not be held responsible for spreader / spread material incompatibility.



## V-MAXX SPREADERS

### V-MAXX VX-1500 – 1200L



- 1200 litre capacity hopper
- For use with commercial vehicles or mount on the optional VMT-250 trailer
- Simple connection to the in-cab controller via a 4 pin cable

### V-MAXX VX-2200 – 1600L



- As the VX-1500 but with larger 1600 litre capacity hopper
- Simple connection to the in-cab controller via a 4 pin cable



## OPTIONS

**FULLY  
ROAD  
LEGAL**



**SHOWN WITH SP-8500 SPREADER**

### OPTIONAL TRAILER VMT-250

- For use with VX-1500 & VX2200
- Ideal for work on the public highway – full road legal specifications including lights, overrun brakes, suspension and hand brake
- Frees up the pick-up bed for other duties
- Retains unique SnowEx features of on-the-move spread width and speed control - spreader loom extension included
- Ready to hitch up and go when required
- No vehicle tachograph normally required



**SCAN  
HERE TO  
FIND OUT  
MORE  
V-MAXX**





# V-MAXX SPREADERS

(VX-1500 / VX-2200)



VX-1500



VX-2200 WITH VMT-250 TRAILER

## SNOWEX BATTERY BOX & SWITCH (TS-BB-PK, TS-BB-PK-275)

Allows the spreader to be powered from its own battery without the vehicle being hard wired to operate the machine.

Additional option of fly-lead and switch.

### FITS MODELS:

- All utility spreaders
- All V-Pro spreaders
- All V-Maxx spreaders



## KEY

- 1 POLYETHYLENE HOPPER CONSTRUCTION**
  - Eliminates corrosion and enhances life of the equipment.
  - Is considerably lighter when compared to steel.
  - One-piece closed bottom unit.
- 2 PATENTED MULTI-ANGLED HOPPER**
  - Thick-walled construction.
  - Allows effective flow of material.
- 3 INVERTED "V" SALT/SAND BAFFLE AND ATTACHED VIBRATOR**
  - Spreads 100% bulk salt to 100% coarse sand.
  - Adjustable for continuous flow of bulk salt or coarse sand.
- 4 1/2 HORSEPOWER 12-VOLT ELECTRIC DRIVE SYSTEM**
  - Low maintenance, high-torque, commercial continuous-duty electric motor.
  - Weather-resistant sealed unit for durability.
  - Two grease fittings (Zirk fittings) for easy maintenance.
  - Drives a variable-pitch solid-shaft auger.
- 5 QUICK-CONNECT SPINNER ASSEMBLY WITH NO-BLAST STARTUP**
  - Designed for easy installation and removal.
  - Allows use of towbar hitch when removed.
  - Features durable corrosion-resistant polyurethane spinner.
  - For maximum material placement and control, the spinner doesn't blast upon startup, instead starting at the desired speed setting on the dial.
- 6 INDEPENDENT SPINNER AND AUGER CONTROL**
  - Both models are complete with an in-cab dual variable-speed controller, for independent speed adjustment of the spinner and auger. Using this digital controller allows for precise material placement.
- 7 TOP SCREEN**
  - Prevents large frozen chunks of material from entering hopper.
  - Provided as standard equipment.
- 8 FITTED TARP**
  - Provides protection from water ingress, for clog-free distribution of material.
- 9 NON-COMBUSTIBLE HD AUTOMOTIVE HARNESS**
  - Only requires a single 4-pin wire routed into the cab to install the compact control.
- 10 ACCESSORY HUB**
  - Conveniently connect accessories directly into the fully enclosed accessory hub mounted in the back of the hopper.

# **WESSEX WINTERLINE RANGE**



## **ATV LIQUID BRINE SPRAYER**

**BS-618**  
**B-MNB**

55 litre with hand lance & hose.  
Brine spraying boom, 1.50m.



## **GRANULAR SALT SPREADERS**

All models c/w winter spreading kit and plastic hopper.

**FS-360-P-WK** Mounted PTO salt spreader, 335 ltr  
**FS-270-TP-WK** Trailed salt spreader, 270 ltr

All FS salt spreaders are fitted with FS-WK winter kits.



## **SNOW BLADES**

**SB-150** Snow Blade with front linkage, 1.50m  
for compact tractor  
**SB-190** Snow Blade with front linkage, 1.9m0  
for compact tractor  
**SB-HA** Hydraulic angling  
**SB-BB** Spring break-back protection  
Please call our sales office for details.



**IN A HURRY THIS WINTER?**  
**ORDER YOUR WESSEX**  
**PARTS ONLINE NOW**

GO TO [www.wessexintl.com/parts](http://www.wessexintl.com/parts)  
**TO ORDER YOURS NOW**



**SCAN**  
THE CODE  
TO FIND  
OUT MORE



### **WHY SHOULD YOU TAKE THE PLUNGE?**

- ✓ **USUAL DISCOUNT APPLIES**
- ✓ **PAY ON ACCOUNT OR VIA PAYPAL**
- ✓ **CHECK STOCK LEVELS**
- ✓ **VIEW EXPLODED DIAGRAMS**
- ✓ **THE WEBSITE IS OPEN 24 HOURS A DAY, 365 DAYS A YEAR**
- ✓ **HISTORY - SEE WHAT YOU ORDERED AND WHEN (PERFECT FOR RE-ORDERING)**

**ORDER ONLINE NOW...**







## **AFTER-SALES & SERVICE**



## **DEALER NETWORK**



## **SPARE PARTS**

### **WESSEX AFTER-SALES & SERVICE BACK-UP**

At Wessex International, our care for the customer does not stop at the time of machine purchase. Our dedicated after-sales team with their wealth of experience are here to tend to your needs throughout the working life of the machine. Whether it's machine operation, advice on application, or a technical question over maintenance, we're here to help.

### **DEALER NETWORK**

Wessex products are sold exclusively through the Wessex UK dealer and global distributor network. Our dealers have the market knowledge and experience to recommend the correct product for your application, and their in-house service and maintenance department provides a local centre for all your after service requirements.

### **SPARE PARTS**

Only genuine Wessex spare parts should be used to maintain optimum performance from your Wessex machine. To minimise costly machine downtime, parts orders are dispatched daily to our professional dealer network by next-day carrier service (UK mainland), and 2 day for UK Highlands & Islands. If ordered before 1:00pm, parts will be dispatched the same day (subject to availability). **Our online parts store is open 24 hours a day, 365 days a year.** Order your parts from your mobile or computer and we'll take care of the rest.

**T:** 01264 345878 **E:** [parts@wessexintl.com](mailto:parts@wessexintl.com)

# **SPREADER TECHNICAL SPECIFICATIONS**

**WITH 9 MODELS AND NUMEROUS OPTIONS SYSTEMS TO CHOOSE FROM, THERE IS A SNOWEX SOLUTION TO MEET YOUR NEEDS:**

## **ELECTRICAL**

<b>Speed Controller</b>	Variable speed dial controller with digital display for spreading width and digital system status and circuit protection.
	Dual independent auger/spinner speed and flow control system digital display with system status and circuit protection.
<b>Wiring Harness</b>	12 gauge 2 conductor cable c/w moulded plugs.
	Completely loomed 10 gauge GxL high temperature automotive wiring with plugs.

## **CONSTRUCTION**

<b>Frame</b>	Frame Heavy duty modular steel frame.
<b>Hopper</b>	One-piece safety yellow high density Polyethylene; UV protected.
<b>Motor</b>	12-volt sealed direct drive motor.
<b>Spinner Transmission</b>	Maximum torque transmission with bronze gear and grease filled.
<b>Auger-Drive Assembly</b>	Heavy duty steel auger, coupled to maximum torque transmission.
<b>Finish</b>	Electrostatic powder finish.
<b>Mounting</b>	Heavy duty ratchet straps, combined with adjustable stop brackets and bolt-in-place rails.

## **STANDARD EQUIPMENT**

<b>Top Screen</b>	8mm steel rod grid.
<b>Weather Cover</b>	Rigid cover c/w securing hooks.
<b>Fitted Tarp</b>	Heavy duty c/w bungee tie down kit.
<b>Vibrator</b>	12-volt DC heavy duty vibrator.
<b>Brake Light</b>	Horizontal bar type with lead.
<b>Inverted Vee</b>	2 piece assembly for use with 100% salt or 100% sand.

## **OPTIONS**

<b>Optimum Flow Kit</b>	Additional vibrator and dual pitch baffle improves material flow for optimum performance. (OFK-020)
<b>Tube Restrictor Kit</b>	Two piece restrictor tube for use with free-flowing material. (TRK)

## SPREADING MATERIALS GUIDE

	SP-575X-1	SP-1575-1	SP-1875-1	SP-2000	SP-6000	VX-1500	VX-2200
Dry free-flowing salt	–	✓ ▲	✓ ▲	✓ ▲	✓ ▲	–	–
Moist salt (Rock salt)	✓	✓	✓	✓	✓	✓	✓
Sand	–	–	✓	✓ *	✓	✓	✓
50:50 sand/salt mix	–	✓	✓	✓ *	✓	✓	✓
Bagged ice melters	✓ ▲	✓ ▲	✓ ▲	✓ ▲	✓ ▲	–	–

**Please note:** this chart is a general guide and not all-inclusive.  
Wessex International will not be held responsible for spreader / spread material incompatibility.

▲ if fitted with TRK kit  
\* if fitted with OFK-020



# **SPREADER TECHNICAL SPECIFICATIONS**

SP-575X-1	SP-1575-1	SP-1875-1	SP-2000	SP-6000	VX-1500	VX-2200
✓	–	–	–	–	–	–
–	✓	✓	✓	✓	✓	✓
✓	✓	✓	✓	✓	✓	✓
✓	✓	✓	✓	✓	✓	✓
✓	✓	✓	✓	✓	✓	✓
✓	✓	✓	✓	✓	✓	✓
✓	✓ x2	✓ x2	✓ x2	✓ x2	✓ x2	✓ x2
✓	✓	✓	✓	✓	✓	✓
✓	✓	✓	✓	✓	✓	✓
✓	✓	✓	✓	✓	✓	✓
–	–	–	✓	✓	✓	✓
✓	✓	✓	✓	✓	✓	✓
✓	✓	✓	–	–	–	–
–	–	–	✓	✓	✓	✓
✓	✓	✓	✓	✓	✓	✓
–	–	–	–	–	–	✓
–	–	✓	✓	–	–	✓
–	–	–	✓	✓	–	–
–	<b>TRK-1575</b>	<b>TRK-1875</b>	<b>TRK-3000</b>	<b>TRK-6000</b>	–	–

## QUICK REFERENCE CHART

	SP-575X-1	SP-1575-1	SP-1875-1	SP-2000	SP-6000	VX-1500	VX-2200
Capacity (litres)	163	163	254	300	800	1200	1600
Spreading width (m)	1.5-12	1.5-9	1.5-12	1.5-9	1.5-12	1.5-12	1.5-12
Amperage draw (max)	12-15A	25-30A	25-30A	25-30A	25-30A	30-59A	30-59A
Spinner diameter (mm)	254	254	300	300	300	450	300
Weight (empty) (kg)	48	55	81	127	161	249	353
Height (mm)	890	895	914	685	914	864	991
Width (mm)	960	960	1321	1232	1232	1118	1118
Depth/length (mm)	630	750	609	1625	1702	2273	2680
Floor length (mm)	–	–	–	1143	1270	1981	2438
Floor width (mm)	–	–	–	864	864	1130	1130

Specifications may change without notice.



**MANUFACTURING EXCELLENCE SINCE 1962**

Dealer stamp



**WESSEX INTERNATIONAL** Charlton House, Caxton Close, East Portway Ind. Est., Andover, Hampshire, SP10 3QN  
**T:** 01264 345870 **F:** 01264 345880 **E:** sales@wessexintl.com **www.wessexintl.com** Follow us on:    

L496. © Wessex International 2018. E&OE. Specifications may change without notice. Wessex International is a trading name of Wessex International Machinery.

