



## Toppers

- CT120
- CT150
- CT180

## Owner's manual and spare parts list



Manufacturers and European Distributors of Quality Equipment

Broadwood International  
Bordon Trading Estate  
Oakhanger Road  
Bordon  
Hampshire GU35 9HH

T 01420 478111  
F 01420 483000  
E [sales@broadwoodintl.co.uk](mailto:sales@broadwoodintl.co.uk)  
W [www.broadwoodintl.co.uk](http://www.broadwoodintl.co.uk)

## **Introduction**

Your Wessex Country topper has been designed to do a range of work to your satisfaction. This list of instructions covers the basic requirements for maintenance and will ensure good service if carried out.

## **Cautionary Advice**

Special safety features are incorporated in the design of this machine for your protection but careless operation can still cause damage or injury.

DON'T let familiarity trap you into danger.

DON'T attempt any adjustment whatever while the machine is operating or spinning to a stop.

DON'T attempt to clear away any obstruction around the machine unless the cutter is stationary.

KEEP WELL AWAY from machine if cutter is spinning.

SPECTATORS (particularly children) must be kept well away while machine is operating as sticks and stones can fly further than expected.

MAKE REGULAR INSPECTION of the cutter assembly for fracture and be sure that flails and flail plate are securely attached. Replace if any irregularity or excessive wear shows.

## **Fitting to the Tractor**

The mower is attached to the tractor three point linkage in the normal manner. The telescopic drive shaft can then be fitted.

Fit stabiliser bars or chain.

Fit the drive shaft securely to the tractor P.T.O. and gearbox input shaft.

Ensure that both splined yokes are securely fastened to the splined shaft on both the tractor and the mower.

See notes on drive shaft.

## **The Telescopic Drive Shaft**

There is a wide range of tractors and the horizontal distance between the power take off shaft and the drawbar varies considerably. A specific instruction for each would require extensive research. However, taking for example the minimum and maximum conditions, safe working lengths of the drive shaft are as follows. Once the shaft is fitted to the machine or tractor a simple test should be carried out. On raising and lowering the machine fully on the linkage arm, at no point of time should the P.T.O. shaft be fully compressed. During the raise and lowering travel, when the P,T.O. shaft is at the shortest length, allowance should be made for the shaft to compress a further 40mm, but taking care that the shaft is not cut too short so that at the longest point during travel has still got at least 100mm of contact with both inner and outer. Ensure that both splined yokes are securely fastened to the splined shafts on both the tractor P.T.O. and mower gearbox input shaft.

## **Routine Lubrication and Maintenance**

Greasing and oiling is important and the following guide will help to keep the machine in good condition.

- 1) Grease the sliding shaft and tube of the driveshaft every 20 working hours. The shaft should be pulled apart to ensure sufficient application
- 2) Grease the driveshaft cross and bearings every 10 working hours.
- 3) Check gearbox oil before use every time. Top up with EP 90 extreme pressure or alternative tubes of grease.

We reserve the right to change or alter specifications without notification.

When fitting blades, special care should be taken to ensure that the genuine attaching bolt is done up tight and that the split pin is located through the nut.

Blades should now be free swinging on the special hardened bush which is locked up tight with the bolt.

**REMEMBER! USE OF NON GENUINE WESSEX COUNTRY PARTS WILL INVALIDATE WARRANTY!!**

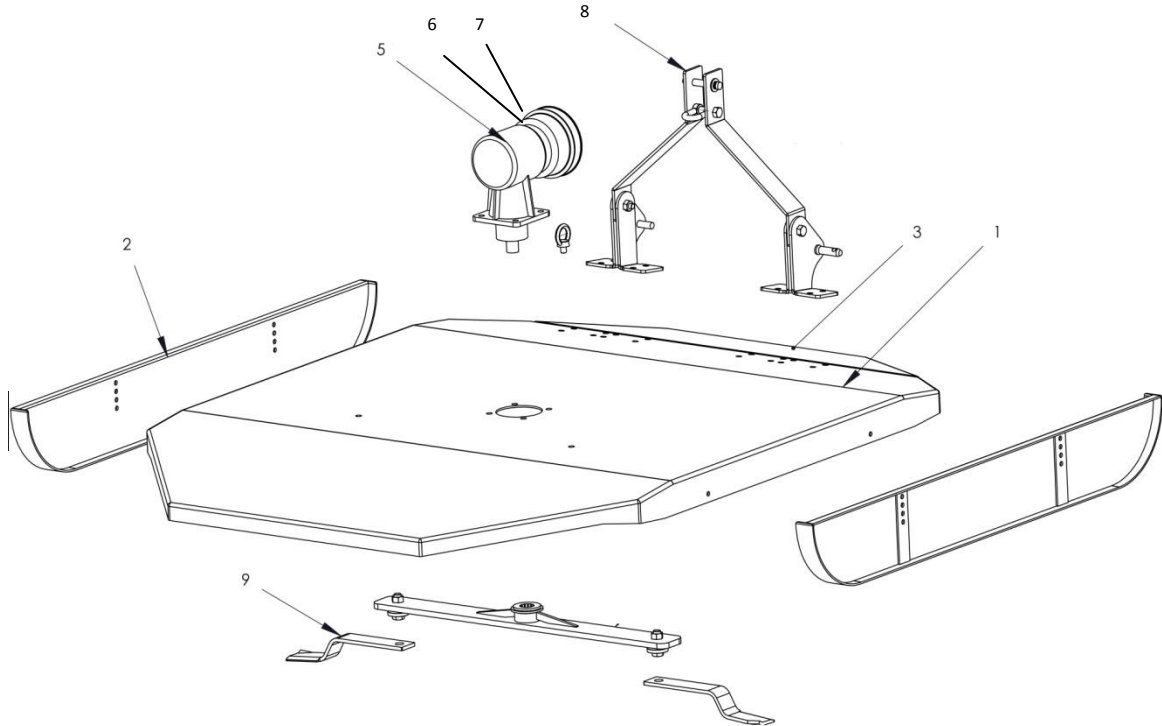
#### **Points to Remember**

- 1) Fast forward speed leaves longer stubble. The slower the speed, the better the finish.
- 2) Maintain skids parallel to each other by always adjusting bolts to same height holes each side.
- 3) High P.T.O. revs will slightly lift blades, which will cut higher than expected.
- 4) Best performance from your Wessex Country topper will be gained when the P.T.O. revolutions are maintained between 540 and 650 r.p.m.
- 5) Always ensure that the front of skids are in contact with the ground. Failure to do this will cause poor cut quality.

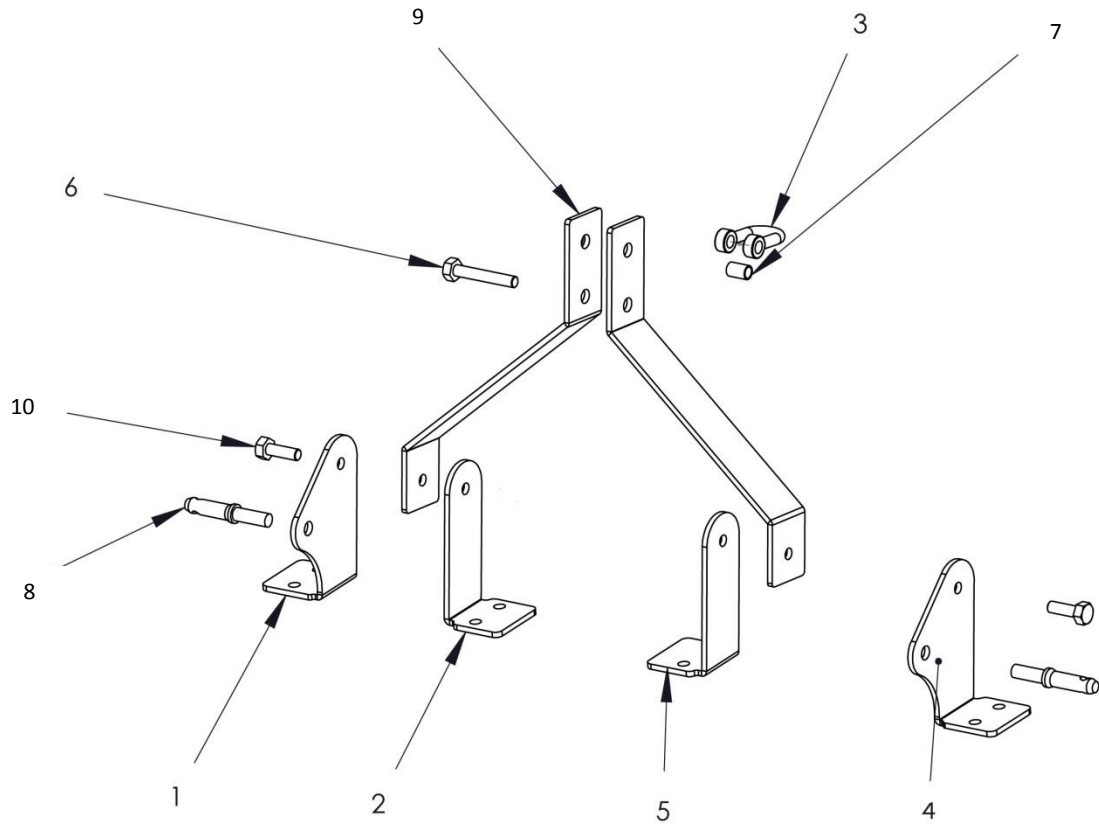
When fitting blades, special care should be taken to ensure that the genuine attaching bolt is done up tight and that the split pin is located through the nut. Blades should now be free swinging on the special hardened bush which is locked up tight with the bolt.

**REMEMBER! USE OF NON GENUINE WESSEX COUNTRY PARTS WILL INVALIDATE WARRANTY!!**

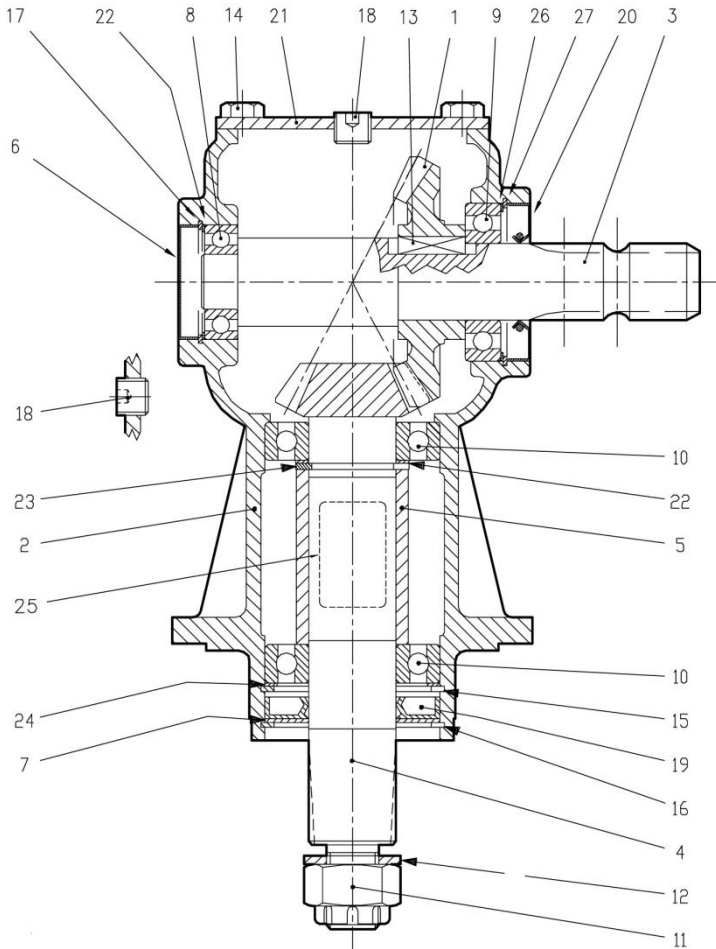
We reserve the right to change or alter specifications without notification.



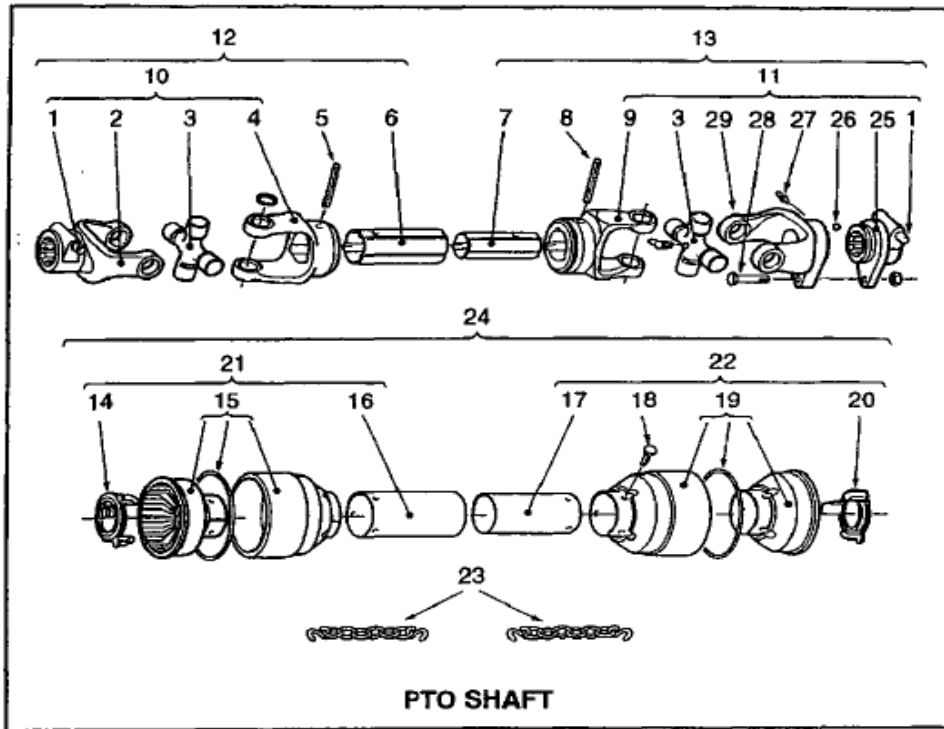
Item No.	Description	CT120	CT150	CT180	Part Number
1	Main Deck	0	0	1	13079
1	Main Deck	0	1	0	12979
1	Main Deck	1	0	0	12879
2	Skid Assembly	2	0	0	4079
2	Skid Assembly	0	2	2	4179
3	Deck Extension	1	0	0	13178
3	Deck Extension	0	1	1	13278
NS	Support Strap	1	0	0	7330
NS	Support Strap	0	1	1	7430
5	Gearbox Assembly	1	1	1	5657
6	Cone Guard	1	1	1	5177
7	F/Set	1	1	1	5103
8	See separate diagram				
9	See separate diagram				



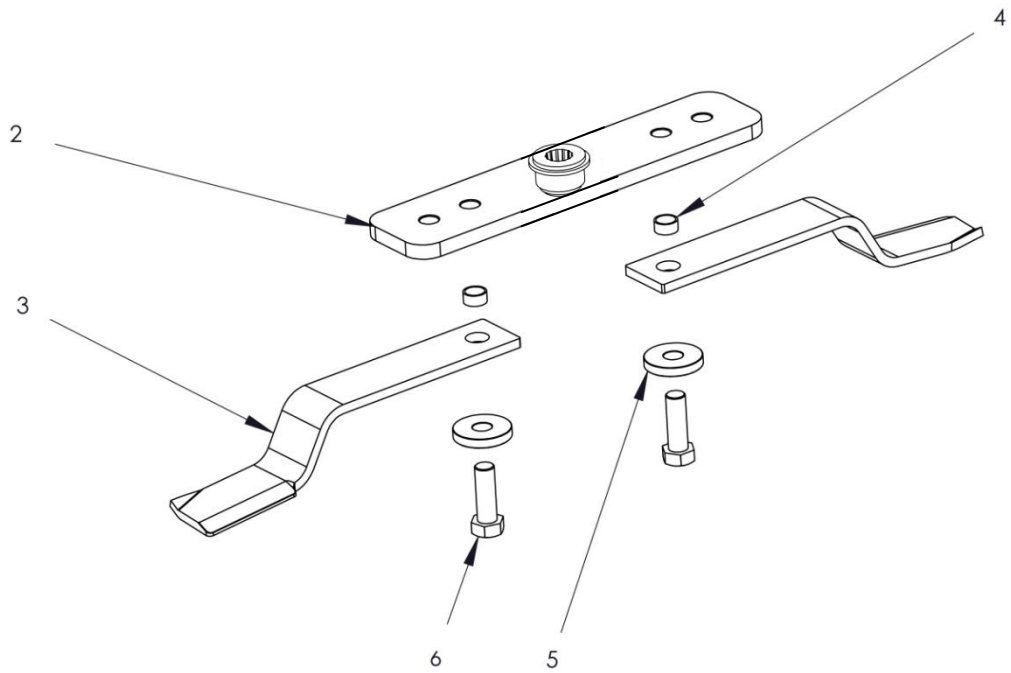
Item No.	Description	CT120	CT150	CT180	Part Number
1	LH 'A' Frame Bracket	1	1	1	9858
2	LH 'A' Frame L Bracket				9758
3	Shackle	1	1	1	0629
4	RH 'A' Frame Bracket	1	1	1	9958
5	RH 'A' Frame L Bracket	1	1	1	10158
6	M16X100 Bolt Set	1	1	1	45031
7	Spacer	1	1	1	10058
8	Bottom Link Pin	2	2	2	0228
9	Frame Arm	2	2	2	22080
10	16x50 Bolt Set	2	2	2	7303



Item No.	Part Number	Qty.	Description
1	0.135.5000.00	1	CROWN GEAR Z23 M5
2	0.205.0300.00	1	CASING
3	0.135.2001.00	1	INPUT SHAFT 1 "3/8 Z6
4	0.135.6008.00	1	PINION Z12 M5
5	0.135.7105.00	1	SPACER
6	8.7.0.00693	1	OIL CAP (52x7)
7	1.135.7100.00	1	PROTECTIVE WASHER
8	8.0.1.00034	1	BALL BEARING 6205 (25x52x15)
9	8.0.1.00870	1	BALL BEARING 6207 (35x72x17)
10	8.0.1.00871	2	BALL BEARING 6208 (40x80x18)
11	8.2.2.00515	1	CASTLE NUT M24X2
12	8.3.2.00409	1	BOLT WASHER (25x44x4)
13	8.4.1.00993	1	PARALLEL KEY B (10X8X30)
14	8.1.1.00054	4	BOLTS M 10x20 HHB (8.8)
15	8.5.2.00030	1	SNAP RING (80x83.5x2.5 , FOR HOLES)
16	8.5.3.00955	1	SNAP RING SB 81
17	8.5.2.01358	1	SNAP RING (52x55x2.5 , FOR HOLES)
18	8.6.6.00201	2	3/8" GAS SOLID PLUG
19	8.7.1.00748	1	DUST LIP (40X80X12)
20	8.7.3.00055	1	OIL SEAL (35X72X10)
21	0.205.1300.00	1	COVER
22	0.244.7500.00	2	SHIM KIT (40.3x51.5)
23	8.5.1.00680	1	SNAP RING (40x37.5x2.5 , FOR SHAFTS)
24	0.267.7500.00	1	SHIM KIT (69x79.7)
25	0.124.7135.00	1	NAME PLATE
26	0.248.7500.00	1	SHIM KIT (60.3x71.7)
27	8.5.2.00131	1	SNAP RING (72x75x2.5 , FOR HOLES)



Item No.	Description	CT120	CT150	CT180	Part Number
	<b>Complete Shaft</b>	<b>4581</b>	<b>4681</b>	<b>4681</b>	
1	Push Pin Set	2	2	2	166.026.004
2	Push Pin Yoke	1	1	1	141.022.001
3	Cross Journal Set	2	2	2	180.012.130
4	Outer Yoke	1	1	1	151.012.130
5	Pin – Outer Tube	1	1	1	190.000.011
6	Outer Tube	1	1	1	152.120.208
7	Inner Tube	1	1	1	153.120.108
8	Pin – Inner Tube	1	1	1	190.000.011
9	Inner Yoke	1	1	1	151.012.002
10	U Joint - Outer	1	1	1	121.022.201.10
11	U Joint - Inner	1	1	1	121.022.500.10
12	Half Female Shaft	1	1	1	123.220.637.10
13	Half Male Shaft	1	1	1	123.220.330.10
14	Collar	1	1	1	180.012.007F
15	Cone	1	1	1	180.012.013F
16	Outer Shield	1	1	1	156.121.108F
17	Inner Shield	1	1	1	157.121.208F
18	Bolt	6	6	6	190.000.019F
19	Cone	1	1	1	180.012.012F
20	Collar	1	1	1	180.012.006F
21	Half Female Shaft	1	1	1	142.211.125F
22	Half Male Shaft	1	1	1	142.221.218F
23	Safety Chain	2	2	2	180.016.025F
24	Complete Shield	1	1	1	142.220.208F
25	Hub	1	1	1	024.013
26	Ball	Set	Set	Set	000.022
27	Grease Nipple	1	1	1	000.020
28	Shearbolt	1	1	1	000.505
29	Yoke	1	1	1	014.012



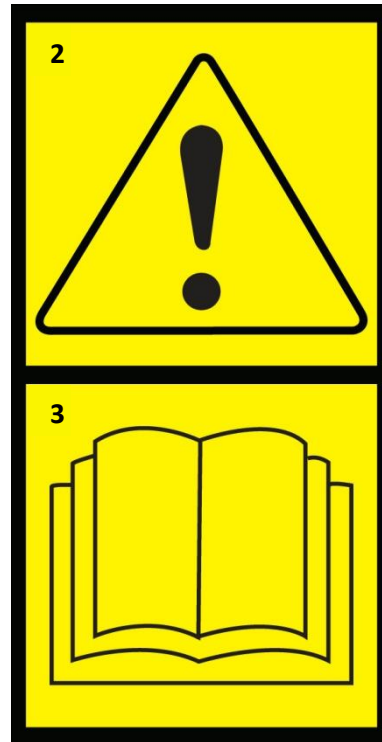
Item No.	Description	CT120	CT150	CT180	Part Number
2	Blade Bar	1	1	0	10470
2	Blade Bar	0	0	1	10570
3	Blade	2	2	2	3270 A
4	Blade Bush	2	2	2	2839
5	Blade Washer	2	2	2	2939
6	Bolt Set	2	2	2	30101



**SAFETY LABELS**



<p>1</p> <p><b>ATTENTION: Description of pictograms.</b></p>	<p>2</p> <p><b>Do not use without PTO shaft guard.</b></p>	<p>3</p> <p><b>Never remove guards or attempt adjustment until rotor has stopped.</b></p>
<p>4</p> <p><b>Read operating manual before use.</b></p>	<p>5</p> <p><b>Ear defenders must be worn.</b></p>	<p>6</p> <p><b>Bystanders must be at least 20 metres from machine range of action.</b></p>



<p>1</p> <p>Protective eyewear, footwear, gloves and ear protectors must be worn.</p>	<p>2</p> <p>ATTENTION: Description of pictograms.</p>	<p>3</p> <p>Read operating manual before use.</p>
---	---	---