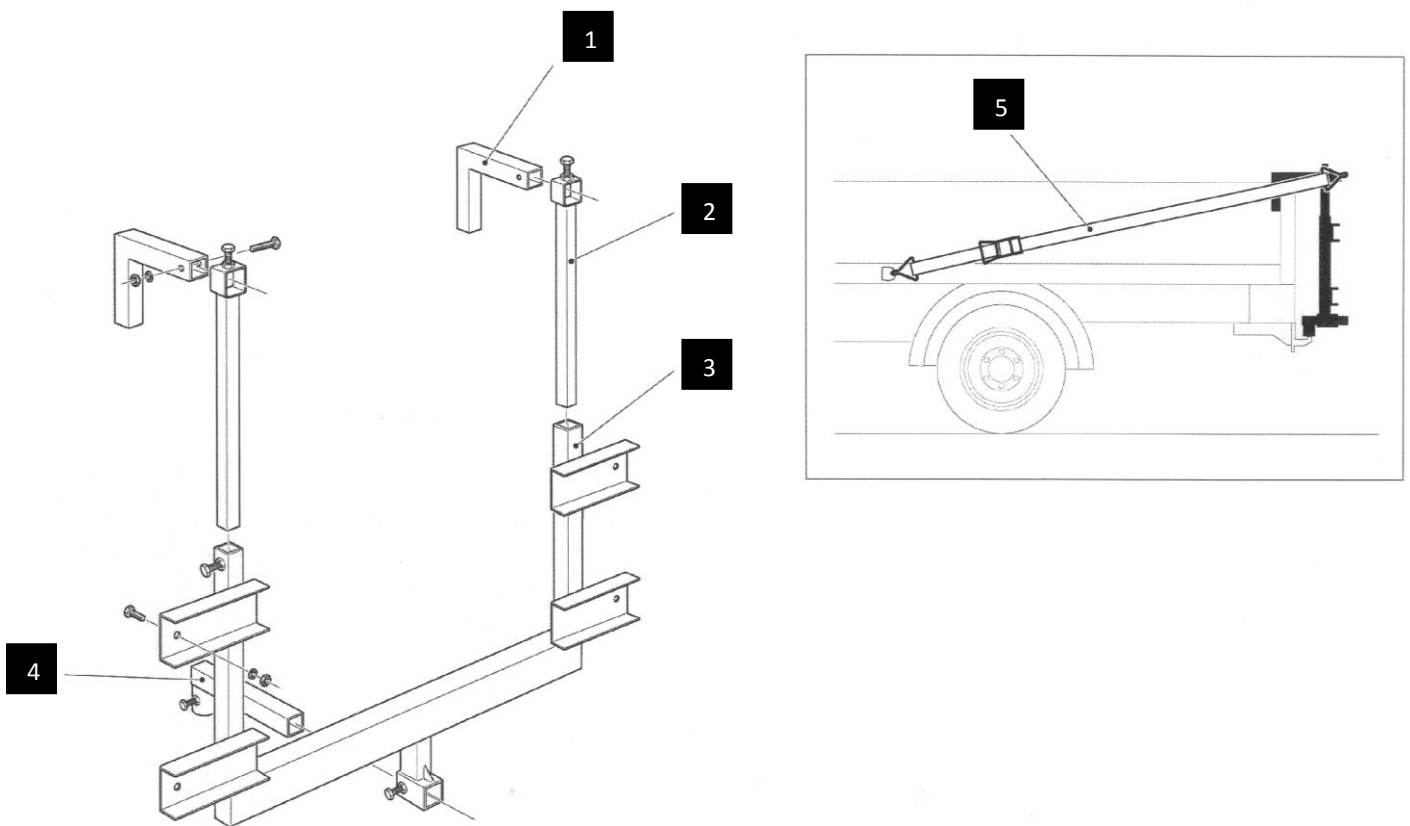


## SnowEx DSM-175 Drop Side Mount Assembly.

<u>PART NO's</u>			<u>QTY</u>
1.	DSM175/01	Top Hangers	2
2.	DSM175/02	Up Rights	2
3.	DSM175/03	Main Frame	1
4.	DSM175/04	Hitch Leg	1
5.	DSM175/05	Pair of Ratchet Straps	1



Insert items uprights (2) into main frame (4). Insert items top hangers(1) into position on uprights (2). Insert item hitch leg (4) in to lower bracket of uprights (2). leave pinch bolts loose.

Lift the complete frame assembly up and hook items top hangers (1) over the vehicle tail gate and place hitch leg (4) over vehicle ball hitch. Push frame assembly hard against vehicle tail gate and take up any gap between the tailboard by adjusting item top hangers (1) to remove any free play. Tighten all pinch bolts.

The hitch can now be fitted to the SnowEx SP-1875. The SP-1875 is fixed to the DSM-175 by sliding the mounting rails section of the mainframe (4) inside the mounting rails on the rear of the spreader frame and secured in place by 4 x M10 x 80 bolts and nuts.

### **Final Fitting to Vehicle**

The complete unit (DSM-175 and SP-1875) can now be fitted to the vehicle as follows:- Drop the unit back in place on the back drop-side tail of the vehicle, be sure to place the hitch leg (4) over the tow ball and tighten lock bolt so that it engages under the tow ball preventing removal.

The spreader should now sit level, any final adjustment can be made by adjusting the hitch leg (4) as required.

Take the 2 ratchet straps (5) provided and hook to the rear side of the spreader, run both straps forward to a point on the vehicle. Medium tension both straps.

Check the spreader and hitch does not obscure lights and number plate, further provision maybe required for additional lights and number plate.

### **SnowEx DSM-175 Usage Instructions.**

The DSM-175 is redesigned for use with the SnowEx SP-1875 only. The hitch is multi adjustable and designed for the use with drop sided commercial vehicles fitted with a 50mm towing ball. The DSM-175 should not be used with 'Flare side' pick-ups or vehicles that are considered too fragile or easily damaged by the use of the mount. The drop side of the vehicle intended for use must be made from steel or a strong alloy design. **Do not fit to vehicles without a tow-ball fitted.**

No claim will be upheld by the manufacturer for damage to vehicles or paint finish how so ever caused relating to part fitment or unsuitable vehicle choice or pairing in relation to use of the DSM-175.

#### **Road speed must not exceed 15mph when carrying spreading material in the spreader hopper.**

Care should be taken when spreading or when travelling over speed bumps, curbs or other traffic calming devices. Particularly when spreading material is being carried in the spreader hopper, do not exceed 2 mph when crossing such devices with any material in the hopper of the spreader.

Weight on the DSM-175 should not exceed 335kgs.

Before operating or travelling with a DSM-175 mounted on your vehicle, ensure that it is correctly adjusted to suit your vehicle and that all bolts and straps are tight, check to see that the tail board is latched. Ensure that the vehicle lights and number plate are not obscured, supplementary lights and number plate may be required.