
WESSEX



FM 180

Pasture Topper

OPERATING MANUAL & Parts List

WESSEX FARM MACHINERY SALES CO.

Trading Estate, Oakhanger Road, Bordon,
Hampshire, GU35 9HH.
Telephone: 0420 478111

24hrs parts hotline 0420 474319

PLEASE READ THE FOLLOWING
PAGES CAREFULLY BEFORE
USING YOUR MACHINE

IMPORTANT SAFETY WARNING

Wessex Toppers are guarded for your protection but you must always observe certain elementary precautions. Rotary mowers are potentially dangerous machines, and should be used with the greatest respect. Ensure that ALL operators are aware of the following:-

1. NEVER attempt any adjustment whatever unless the machine is COMPLETELY at a standstill.
2. NEVER attempt to clear any obstructions around the mower unless the machine is COMPLETELY at a standstill.
3. NEVER remove belt guards unless the machine is COMPLETELY at a standstill.
4. NEVER remove safety guards which are provided for your protection.
5. NEVER operate the mower with people behind; keep everybody (especially children) at a safe distance.
6. Stand well back from the machine, when cutters are spinning.
7. Regularly, inspect the BLADES AND FIXING BOLTS to ensure that they are in tip-top condition. Replace blades IMMEDIATELY any fracture or excessive wear becomes apparent. Serious damage which is excluded from our warranty conditions may result from using your mower with an unbalanced rotor. When replacing blades always fit new mounting bolts and nuts.
8. When working in public areas always fit the optional public authority guarding kit.

HEALTH & SAFETY – Noise at Work Regulations

In compliance with the above regulations, this machine has been tested in operation with a Tractor without a quiet cab and working at 540 R.P.M. with the following result:-

READING AT THE OPERATORS EAR FM 180 Pasture Topper 94.5 D.B.A.

WARRANTY

Your Wessex Topper is warranted free from defect in workmanship or manufacture for 1 year from date of purchase, with the exception of gearbox seals (ninety days). Any parts which appear to us to be defective either in material or workmanship shall be replaced or repaired at no cost to the purchaser, subject to the following conditions:-

1. The registration card enclosed with this booklet must be returned to us within seven days of purchase.
2. Any failure in the machine should be reported in the first instance to your dealer who will act on your behalf to resolve the matter to your satisfaction.
3. The defective parts will be returned by your dealer to us accompanied by a full statement describing the failure, and the circumstances and conditions in which the failure occurred, within five working days of failure.
4. The following are specifically excluded from the terms of warranty:
 - (a) Fair wear and tear, specially to blades and belt.
 - (b) Damage caused by neglect or lack of lubrication.
 - (c) Damage caused by misuse or abuse.
 - (d) Damage caused while the machine is in transit.
 - (e) Damage caused to the frame of the machine by running the machine with an unbalanced rotor.
5. The warranty is for the benefit of the first user only.

OPERATING INSTRUCTIONS

SETTING UP YOUR WESSEX TOPPER

1. Reverse your Tractor up to the machine, and connect the lower links, left hand first, securing with pin and lynch pins. Ensure that the machine is level from side to side by adjusting the right hand tractor lift arm.
2. Connect the top link to the top of the pivoting headstock.
3. Connect the PTO Shaft, ensuring that the shaft is not too long for your Tractor. If need be shorten the shaft in accordance with the instructions in the back of this book.
4. Adjust the top link so that the mower deck is parallel to the ground.
5. Tighten the check chains on the Tractor to prevent sideways movements.

USING YOUR WESSEX TOPPER

You will obtain best results from your Wessex Topper when a PTO Speed of 540rpm is maintained consistently, and you should select a forward speed accordingly.

For greater efficiency, work your Wessex Topper clockwise around a field, i.e. always turning right, to improve the spread of cut material.

In heavy wet grass, it may be necessary to make two passes, lowering the cutters after the first cut.

SKID MACHINE

Always lift the machine when turning sharply to avoid damage to the turf, and to avoid excessive side strain on the skids.

In undulating conditions the top of the two pins holding the floating headstock may be removed. This will enable the machine to float independently of the tractor, thus following the contours of the ground better.

WHEELED MACHINES

Set the rear wheels to the desired height, then lower the machine on the linkage, ensuring that the machine is level from front to back. Adjustment should be made by lengthening or shortening the top link.

To follow ground contours when cutting to a fine finish, the top pin in the floating headstock may be removed. The stop on the bottom link arms must then be set to prevent the front of the machine dropping, and the top link adjusted so that the headstock is upright. This allows the machine to pivot around the bottom link pins thus following ground contours independent of the tractor.

Care should be taken not to drive too fast as a bouncing on the tyres may occur which will inevitably cause scalping.

When in transit the wheel arms should be secured with the locking pins provided.

HEIGHT ADJUSTMENT

Cutting height of skid machine is altered simply by repositioning the side skids on the mower body, ensuring that both sides are on the same setting.

Wheeled machines are adjusted by loosening the pivot bolt in the quadrant plate, removing the two fixing bolts and repositioning as desired. The fixing bolts are then replaced and the pivot bolt tightened, ensuring that both sides are positioned the same. The machine must then be levelled from back to front by adjusting the top link.

BELT ADJUSTMENT

Wessex Topper belt adjustment has always been a simple, yet positive feature. The four bolts which hold the gearbox mounting bracket to the deck should be loosened and the nut in the middle tightened. This will move the whole gearbox assembly away from the rear rotor pulley, thus tightening both belts simultaneously. It is advisable to turn the belts as they are tightened to spread the tension. Correct belt tension is when the belt can be deflected 15mm under thumb pressure. Finally the four bolts should be re-tightened.

REPLACING BLADES

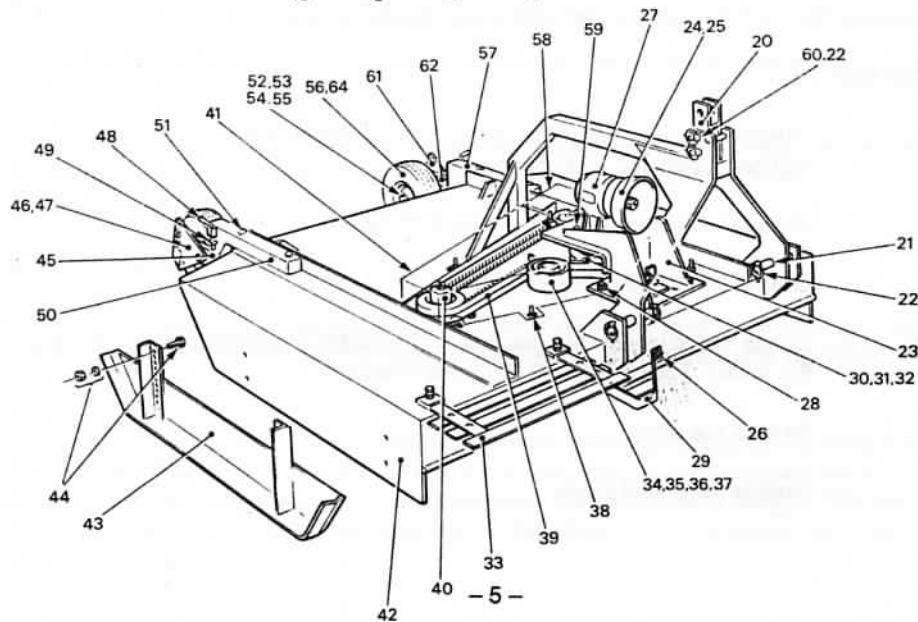
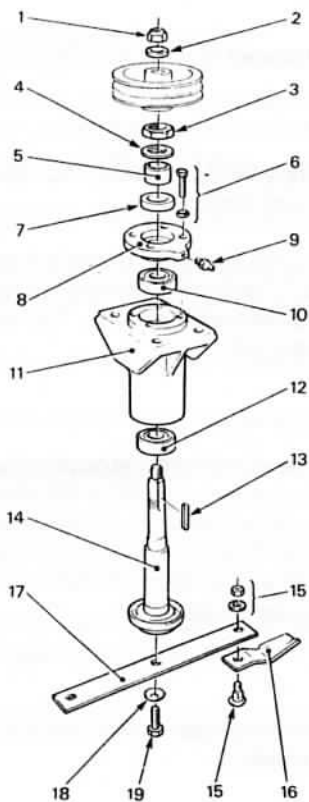
When replacing blades always ensure that the two blades on one rotor are equally worn, or both new, to avoid imbalance and the resulting vibration.

Always ensure that the flat washer is replaced under the blade fixing nut.

LUBRICATION

- | | |
|-----------|---|
| Daily | <ul style="list-style-type: none">- Grease the spindle assemblies through the nipple under each pulley. (This lubricates both top and bottom bearings.)- Grease both cross journals on the PTO Shaft.- Grease the tubes of the PTO Shaft. |
| Regularly | <ul style="list-style-type: none">- Check the oil level in the gearbox. (The centre line of the input shaft being the level.) Top up with EP 90 Grade Gear Oil.- Grease the wheels.- Grease the wheel pivots. |

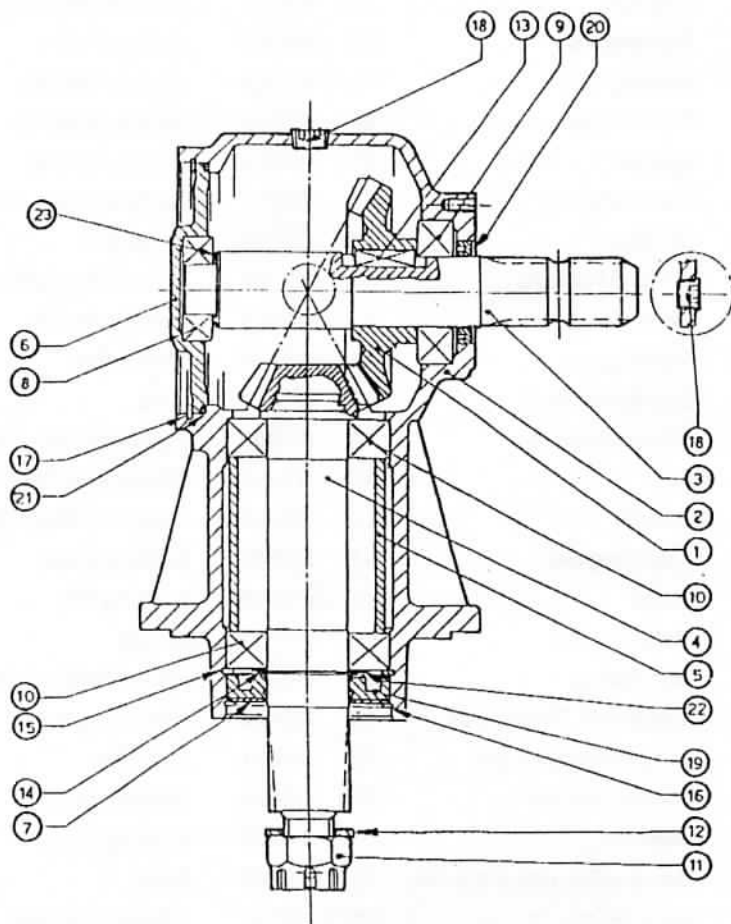
WESSEX FM 180 SPINDLE ASSEMBLY AND PARTS LIST



WESSEX FM 180 SPINDLE ASSEMBLY AND PARTS LIST

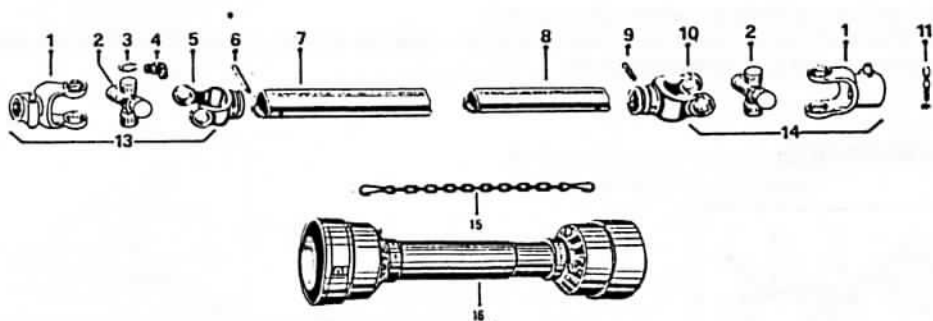
1.	W0113	Top Nut	33.	W9377	Front Adjustable Guard
2.	W0515	Top Washer	34.	W4862	Jockey Pulley
3.	W0166	Locking Nut	35.	W6766	Jockey Spindle
4.	W0120	Tab Washer	36.	W0838	Jockey Bearing
5.	W0266	Spacer	37.	W4966	Jockey Spacer
6.	W0101	Fastening Set	38.	W7701	Fastening set – Guard
7.	W0145	Oil Seal	39.	W2034	Drive Belt
8.	W0766	Oil Seal Housing	40.	W0462	Secondary Pulley
9.	W0146	Grease Nipple	41.	W2378	Belt Cover RH
10.	W0338	Top Bearing	42.	W5179	Mainframe
11.	W0666	Spindle Housing	43.	W1974	Skid
12.	W2938	Bottom Bearing	44.	W1601	Fastening set – Skid
13.	W0147	Key	45.	W0453	Wheel Arm RH
14.	W6666	Spindle	46.	W1253	Quadrant Plate RH
15.	W1439	Fastening Set	47.	W2602	Fastening set
16.	W5570	Blade	48.	W1528	Locking Pin
17.	W5670	Mounting Bar	49.	W0121	R Clip
18.	W2325	Disc Spring	50.	W0253	Wheel Support RH
19.	W1539	Special LH Thread Bolt	51.	W2402	Fastening set
20.	W2780	Top Link Attachment	52.	W0651	Hub Cap
21.	W0326	Bottom Link Pin	53.	W0138	Bearing Inner
22.	W0127	Linch Pin	54.	W0238	Bearing Outer
23.	W6157	Gearbox Mounting Bracket	55.	W0245	Seal
24.	W5177	Cone Guard	56.	W0152	Wheel Complete
25.	W3101	Fastening set – Cone	57.	W0353	Wheel Support LH
26.	W1701	Fastening set – Guard	58.	W2478	Belt Cover LH
27.	W5657	Gearbox complete	59.	W0701	Fastening set
28.	W0801	Fastening set – Gearbox Bracket	60.	W0426	Top Hitch Pin
29.	W0178	Front Guard	61.	W1153	Quadrant Plate LH
30.	W4962	Drive Pulley	62.	W0553	Wheel Arm LH
31.	W5557	Hub Assembly	63.	W2281	NS. PTO Shaft Complete
32.	W2101	Fastening set – Pulley	64.	W1353	Tyre

GEARBOX COMPLETE PART NO. W5557



Pos	Part No.	Piec	Description	Pos	Part No.	Piec	Description
1	0.135.5000.00	1	Gear Z23	13	8.4.1.00993	1	Parallel Key
2	0.135.0301.00	1	Casing	14	8.5.1.00029	1	Snap Ring
3	0.135.2001.00	1	Shaft 1 3/8"	15	8.5.2.00030	1	Snap Ring
4	0.135.6001.00	1	Pinion Shaft Z12	16	8.5.3.00955	1	Snap Ring
5	0.135.7101.00	1	Spacer	17	8.5.3.01057	1	Snap Ring
6	0.135.1301.00	1	Cover	18	8.6.6.00201	2	Plug
7	1.135.7100.00	1	Protective Washer	19	8.7.1.01171	1	Double Lip Seal
8	8.0.1.00034	1	Bearing	20	8.7.3.01172	1	Double Lip Seal
9	8.0.1.00870	1	Bearing	21	8.7.6.01058	1	O-Ring
10	8.0.1.00871	2	Bearing	22	0.244.7500.00	1	Shim
11	8.2.2.00515	1	Castle Nut	23	0.100.7500.00	1	Shim
12	8.3.2.00409	1	Bolt Washer				

P.T.O. SHAFT COMPLETE FM 180 – PART NO. W.2281



Ref.	Description	Part No.	Qty
1	Outer yoke with quick release 1.3/8" – 6 splines	4.05.07	2
2	Cross journal set	4.41	2
3	Circlip	4.11	8
4	Grease Nipple	2.44	2
5	Outer tube yoke	4.06	1
6	Spring dowel for outer tube	4.12	1
7	Outer tube	3.03.100	1
8	Inner tube	4.04.100	1
9	Spring Dowel for inner tube	4.13	1
10	Inner Tube yoke	4.07	1
11	Push pin set 1.3/8"	1.08.25	2
13	Universal joint assembly for outer tube quick release 1.3/8" – 6 splines	4.01	1
14	Universal joint assembly for inner tube quick release 1.3/8" – 6 splines	4.02	1
15	Chain	1.26.01	1
16	Safety shield assembly	4.100.Z	1

P.T.O SHAFT – OPERATION AND MAINTENANCE

PTO drive shafts must only be used for their intended purpose.

PTO drive shafts are designed for specific machine types and power requirements.

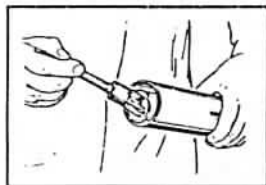
They must not be replaced by other models.

Ensure that the PTO drive shaft is securely connected.

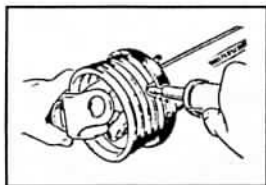
Only use a completely protected drive system:

PTO drive shaft with complete guard and complementary guard on tractor and implement. A complete guard is essential in all working positions.

LUBRICATION



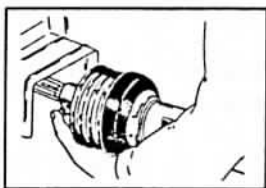
Lubricate with quality grease before starting work and every 8 operating hours.



Clean and grease the PTO drive shaft before each prolonged period of non-use.

* Grease the guard tubes in winter to prevent freezing.

COUPLING THE PTO SHAFT

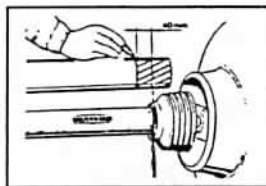


Clean and grease the PTO and PIC.

Q.-d. pin

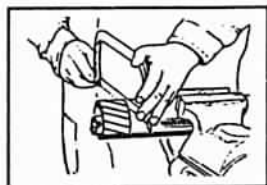
Press q.-d. pin and simultaneously push PTO drive shaft onto PTO shaft until pin engages.

LENGTH ADJUSTMENT

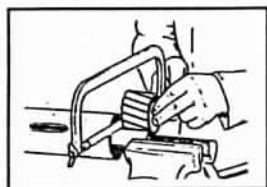


To adjust the length, hold the half-shafts next to each other in the shortest working position and mark them.

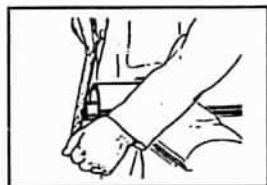
LENGTH ADJUSTMENT



Shorten inner and outer guard tubes equally.



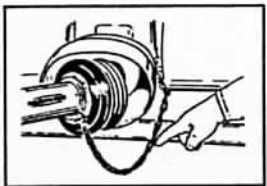
Shorten inner and outer sliding profiles by the same length as the guard tubes.



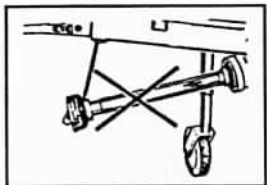
Round off all sharp edges and remove burrs.
Grease sliding profiles.

No other changes may be made to the PTO drive shaft and guard.

CHAINS



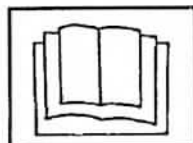
Chains must be fitted so as to allow sufficient articulation of the shaft in all working positions.



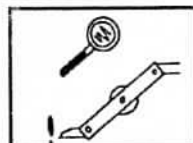
The PTO drive shaft must not be suspended from the chains!



ATTENTION	DESCRIPTION OF PICTOGRAMS
ATTENTION	DESCRIPTION DES PICTOGRAMMES
VORSICHT	BESCHREIBUNG DER PIKTOGRAMMEN



GB	Read Operating manual before use.
F	Lisez Manuel D'Opération avant l'utilisation.
G	Vor der Benutzung, Betriebshandbuch lesen.



GB	Examine blades regularly. Operator's responsibility for machine damage caused by unbalanced rotors.
F	Examinez des lames régulièrement. L'opérateur est responsable des dommages à la machine provoqués par des rotors mal équilibrés
D	Klingen regelmäßig kontrollieren. Der arbeiter ist an den durch unausgewogenen rotoren maschinenschäden verantwortlich.



GB	Never remove guards or attempt adjustment until rotor has stopped.
F	Ne pas enlever ni les dispositifs de sûreté ni essayer le réglage avant que le rotor s'arrête.
D	Schutzvorrichtung niemals abnehmen oder einstellung versuchen, bevore der rotor abstellt.



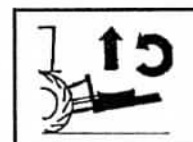
GB	Bystanders must be at least 20 metres from machine range of action.
F	Des spectateurs doivent s'écarter au moins 20 mètres du rayon d'action de la machine.
D	Umstehenden müssen sich mindestens 20 meter vom maschinenbetriebsraum entfernen.



GB	Do not use without pto shaft guard.
F	Ne pas utiliser sans le dispositif de sûreté de l'arbre p.t.o. (arbre d'entraînement).
D	Nicht benutzen ohne p.t.o. (antriebswelle) schutzvorrichtung.



GB	Stand clear. Flying objects possible.
F	S'écarter! Possibilité d'objets volants.
D	Zurückbleiben! Herumfliegende objekte möglich.



GB	Lift machine before turning.
F	Levez la machine avant de la tourner.
D	Maschine aufheben, bevor man sie umdreht.



GB	Ear defenders must be worn.
F	Des serre-têtes doivent être portés.
D	Ohrenschützer müssen getragen werden.