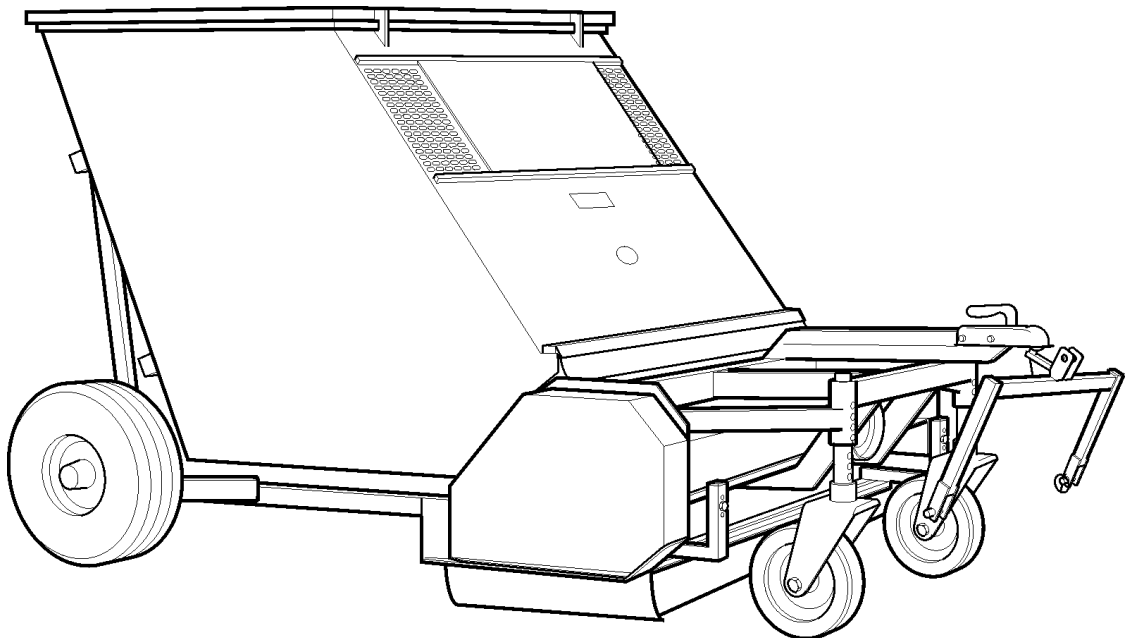




Operation Manual and Parts Book

Wessex ProLine STC/STX180 SWEEPER COLLECTOR



Product Code: L2014



Issue May 2011

CONTENTS

Welcome to your new Wessex Product	1
Safety Decals	2, 3
Important Safety Warnings	4
Warranty	5
Setting up your Wessex Multi-Function Collector	6
Using the Machine as a Sweeper or Paddock Cleaner	6
Adjusting the Front Brush Strip	7
Compensating for Brush Wear	7
Emptying the Hooper	7
Fitting New Brushes	7
Maintenance / Belt Adjustment / Lubrication	8
Change Over Procedure from Sweeping to Scarifying / Mowing	9
Fitting / Changing Scarifying / Flail Blades	9
Fitting Blades for Scarifying	9
Fitting Blades for Mowing / Troubleshooting	10
Specification	11
Parts Illustration - Mainframe Assembly - Plate 1	12, 14
Parts List - Mainframe Assembly - Plate 1	13, 15
Parts Illustration - Drive Assembly (Sweeper) - Plate 2	16
Parts List - Drive Assembly (Sweeper) - Plate 2	17
Parts Illustration - Mower/Scarifier - Plate 3	18
Parts List - Mower/Scarifier - Plate 3	19
Parts Illustration / Parts List - Gearbox - Plate 4	20
PTO Shaft - Operation and Maintenance	21, 22
Safety Training Induction	23
Daily Inspection Record	24
CE Certificate	25

WELCOME TO YOUR NEW WESSEX PROLINE STC/STX180

Thank you for purchasing a Wessex Proline STC/STX180. As a Wessex customer, you now number among the most important people of our business and we will endeavour to give you the best service available through our dealer network.

Please read this Manual carefully and familiarise yourself and other persons that will be using the machine with its contents, to ensure the optimum performance and working life of your machine. It is advisable that a copy of this Manual is kept in the workshop and one copy with the machine. Further copies are available through your dealer.

On delivery, your dealer should go through the workings of the machine with you, explaining the setting up procedures, all of which are contained in this manual for further reference. The Warranty Registration Form must also be completed and returned to us **within 7 days of delivery** in order to validate the Warranty.

**PLEASE READ THE FOLLOWING PAGES CAREFULLY BEFORE USING YOUR MACHINE
AND KEEP THIS MANUAL IN A SAFE PLACE.**



**THIS SAFETY SYMBOL IS TO ALERT OPERATORS OF A HAZARD
THAT MAY RESULT IN INJURY.
ALWAYS FOLLOW INSTRUCTIONS CAREFULLY**

SAFETY DECALS



- GB **ATTENTION** Description of pictograms.
 F **ATTENTION** Description des pictogrammes.
 D **VORSICH** Beschreibung der piktogramme.



- GB Read Operating manual before use.
 F Lisez Manual D'Opération avant l'utilisation.
 D Vor der Benutzung, Betriebshandbuch lesen.



- GB Do not use without pto shaft guard.
 F Ne pas utiliser sans de dispositif de sûreté de l'arbre (arbre d'entraînement).
 D Nicht benutzen ohne p.t.o. (antriebswelle) schutvorrichtung.



- GB Ear defenders must be worn.
 F Défenseurs des oreilles doivent être portés.
 D Gehörschutz getragen werden.



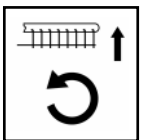
- GB Never remove guards or attempt adjustment until rotor has stopped.
 F Ne retirez jamais les gardes ou d'ajustement tentative jusqu'à ce que toutes les pièces mobiles ont été interrompus.
 D Schutvorrichtung niemals abnehmen oder einstellung versuchen, bevor der rotor abstellt.



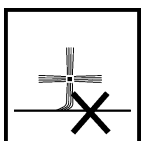
- GB Bystanders must be at least 20 metres from machine range of action.
 F Des spectateurs doivent s'écarter au moins metres du rayon d'action de la machine.
 D Umstehenden müäen sich mindestens 20 meter vom maschinenbetriebsraum entfernen.



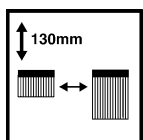
- GB Keep clear of unpropped body
 F Reculez de la machine élève.
 D Nicht in die ungeschützte Maschine fassen



- GB When scarifying, lift rotor before turning.
 F À la course de rayer, élevez le rotor avant de tourner la machine.
 D Beim vertikutieren (Grasnarbe aufreiäen) muss der Rotor vor Richtungsveränderungen (Kurven) angehoben werden.



- GB Damage to brushes if set too low.
 F Ne montez pas la brosse très bas.
 D Bürsten können beschädigt warden, wenn sie zu tief eingestellt sind.



- GB Replace brushes when worn to 130mm of bristle.
 F Remplacez la brosse à 130 mm de longueur de poil.
 D Die Bürsten sind zu wechseln, wenn die Borsten nur noch 130mm lang sind.

SAFETY DECALS



GB Always stop rotor before emptying hopper.

F Arrêtez le rotor avant de vider la trémie.

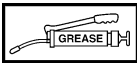
D Rotor muss vor Entleerung des Behälters zum Stillstand Kommen.



GB Keep hands and feet clear

F Garder les mains et les pieds.

D Halten Sie Ihre Hände und Füße.



GB Grease points

F Les points de graissage

D Grease Punkte.



GB Lifting Point

F Point de levage

D Anschlagpunkt

IMPORTANT SAFETY WARNINGS



Wessex sweepers are guarded for your protection, but you must always observe certain elementary precautions. Sweepers are potentially **dangerous** and should be used with the greatest respect and **ALL OPERATORS MUST** read this manual and be aware of all safety precautions.

1. **NEVER** attempt any adjustment whatsoever, unless the machine is **COMPLETELY** at a standstill.
2. **NEVER** attempt to clear any obstructions around the mower unless the machine is **COMPLETELY** at a standstill.
3. **NEVER** remove belt guards unless the machine is **COMPLETELY** at a standstill.
4. **NEVER** remove safety guards which are provided for your protection.
5. **NEVER** operate the mower with people behind, keep everybody (especially children and animals) at a safe distance, **minimum 20 metres**.
6. Stand well back from the machine when cutters are spinning.
7. Regularly inspect the **BRUSHES AND FIXING BOLTS** to ensure that they are in tip-top condition. Replace blades **IMMEDIATELY** if any signs of fracture or excess wear becomes apparent. Serious damage, which is excluded from our warranty conditions, may result from using your mower with an unbalanced rotor. When replacing blades, always fit new mounting bolts and nuts to ensure that the rotor is balanced and running smoothly.

HEALTH AND SAFETY - Noise at Work Regulations

READING AT THE OPERATORS EAR

STC180/STX180 Series Engine Driven Sweepers: 85 D.B.A.

Depending on conditions and material being swept, this may alter, it is therefore advisable for users to do their own assessment.



In compliance with the above regulations, Ear Protectors must be worn when operating machinery.

WARRANTY

Your Wessex product or equipment is warranted free from defect in workmanship or manufacture for one year from date of purchase. Any parts which appear to us to be defective, either in material or workmanship shall be replaced or repaired at no cost to the purchaser, subject to the following conditions:

1. The registration card enclosed with this booklet must be returned to us within seven days of purchase. Alternatively if you prefer, you may register your product via our Website.
<http://www.wessexintl.com/warranty-registration>
2. Any failure in the machine should be reported in the first instance immediately to your dealer, who will act on your behalf to resolve the matter to your satisfaction.
3. The defective parts will be returned by your dealer to us, accompanied by a full statement describing the failure and the circumstances and conditions in which the failure occurred.
4. The following are specifically excluded from our terms of warranty:
 - a) Fair wear and tear, especially to belts, brushes, blades and spinners.
 - b) Damage to blades or brushes caused through incorrect positioning of the rotor (see instructions).
 - c) Damage caused by neglect or lack of lubrication.
 - d) Damage caused by misuse or abuse.
 - e) Damage caused whilst the machine is in transit.
 - f) Damage caused to the frame of the machine by running the machine with unbalanced rotors, blades or spinners.
 - g) Damage caused to the machine by use with loose nuts, bolts, screws or any other type of fittings.
5. The warranty is for the benefit of the first user only.
6. Wessex International decisions will be final and binding.

Note:

It is recommended that every machine is inspected after one hour of operation to check that all nuts, bolts, screws or any other types of fixings are tight and any loose fixings or components should be rectified as appropriate.

Further inspections should be carried out at regular intervals thereafter.

SETTING UP YOUR WESSEX MULTI-FUNCTION COLLECTOR

Your Wessex Multi-function Collector has been designed to work in a wide variety of conditions and is a very simple machine to use. There are one or two adjustments which ensure optimum performance in all conditions.

The machine is three point linkage mounted, and should be coupled to your tractor as follows:-

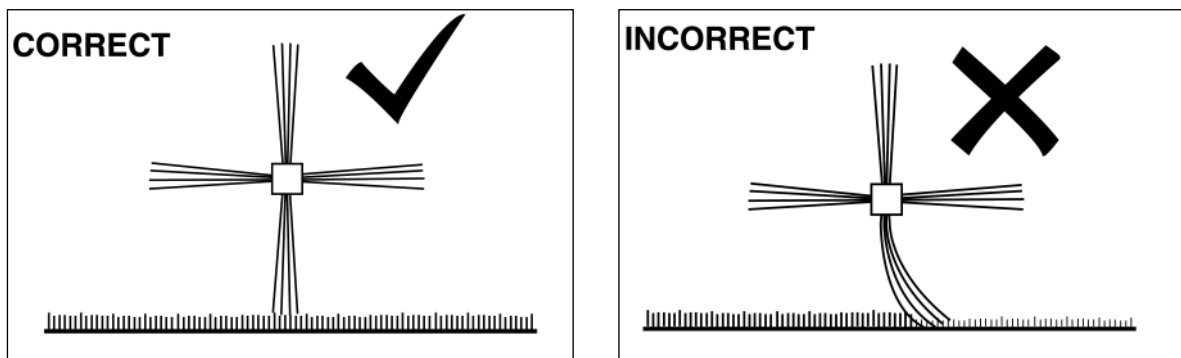
1. Reverse your tractor up to the machine, and connect the lower links, left hand link first, securing with lynch pins. Make sure that the linkage frame is level, adjusting the right hand tractor lift arm if necessary. Connect the top link and adjust so that the linkage frame of the machine is vertical.
2. Connect the P.T.O. shaft, **taking particular care that the shaft is not too long for the tractor.** When the machine is fully raised on the tractor hydraulics, the P.T.O. shaft must **not** be fully compressed. To check this, ensure that it is possible to compress the shaft further in order to remove it. If necessary, the shaft, which is of tubular section, may be easily cut with a hacksaw, ensuring that an equal amount is cut from both male and female sections.

Never make any adjustments to the machine until the tractor engine is switched off and at a standstill.

USING THE MACHINE AS A SWEEPER OR PADDOCK CLEANER

When in work the Sweeper's weight is entirely on the four wheels. The front castor wheels are on adjustable mounting bars so that the brush can be raised or lowered in increments of 6mm according to conditions.

The bristles should be in gentle contact with the ground for maximum pick up action (see diagram). If there is a drumming sound as the brush rotates, the brushes are set too low and should be raised immediately to avoid damage to the brushes.



The brushes are not designed for scarifying or thatch removal, and damage to the brushes will quickly occur if it is used for this purpose.

When using the Sweeper it is a good idea to start off with the rotor fully raised, and lower it if necessary until a satisfactory result is achieved. If the leaves are blown away from the rotor by excessive turbulence, lower the adjustable front brush strip fully (see next section) and only then lower the rotor.

ADJUSTING THE FRONT BRUSH STRIP

At the front of the Sweeper, there is an adjustable brush strip bolted to the frame through a series of adjustment holes.

When sweeping grass clippings, or autumn leaves on turf areas, the brush strip should normally be in the lowest position. For a heavy fall of leaves, the strip can be raised to prevent a build-up in front of the machine.

When sweeping on hard surfaces it is usually necessary to lower the strip to reduce air turbulence at the front of the Sweeper. Because there is less resistance on hard surfaces to air turbulence, it is often advantageous to reduce the rotor speed by throttling back the engine.

Conditions will vary on the same site from day to day, dependent on weather conditions. There are sufficient adjustments of the brush strip and of the rotor position to ensure that your Sweeper does a good job in all conditions. By experimenting with different adjustments you will quickly find the optimum setting to suit your conditions.

COMPENSATING FOR BRUSH WEAR

The bristles on your Sweeper rotor will wear in due course, and it will be necessary to raise the front wheels to take account of this.

The Sweeper has been designed to work effectively until the bristles are approximately half their original length. When the bristles wear beyond this point there is insufficient momentum to throw the leaves and debris into the hopper and it will be necessary to replace the brushes on your machine.

EMPTYING THE HOPPER

Position the machine where you want to empty the load and raise the hopper on the tractor hydraulics. If the hopper is slow to start returning to the down position, lower the tractor link arms so that the front wheels are on the ground. For safety reasons do not move forward until the hopper has completely returned to the working position. **Never tip hopper on sloping ground.**

FITTING NEW BRUSHES

- Raise the hopper using the tractor hydraulics and secure in the raised position using the hopper prop.
- Never climb into the frame underneath the hopper unless the hopper prop is firmly in position.
- Turn the tractor's engine off before entering the frame.
- Remove brush retaining bolts, nuts and washers.
- Fit new brushes and tighten bolts and nuts.
- Remove hopper prop and lower hopper.
- Always fit a full set of brushes to keep rotor in balance.

MAINTENANCE

- **IMPORTANT!** Check that all fastening sets (bolts and nuts) are tight after the first hour of operation.

BELT ADJUSTMENT

- The belts are tensioned in the factory but they will stretch after two or three hours work. It is important to check and re-tension after three hours work.
- To tighten the belts, remove the belt cover then adjust the belt tension by adjusting the jockey pulley adjuster. **NOTE: Correct belt tension is approximately 12-15mm of deflection under the thumb pressure halfway between the pulleys.**
- If belts are cut, frayed or damaged in any way they should be replaced.
- Refit the belt cover and tighten the fixing nut.
- Only use genuine Wessex spare parts.

LUBRICATION

DAILY (8-10 Working Hours)

- Grease main rotor bearings (x2).
- Grease wheel castors (x2).
- Grease wheel bearings (x2).
- Oil height adjusting bars.

PERIODICALLY (50+ Hours)

- Grease hopper pivot points.
- Grease ball hitch and swivel.
- Check gearbox oil periodically, top up with EP90 gear oil.
- Grease drive shaft universal joints periodically.
- Grease gearbox cross shaft bearings.

CHANGE OVER PROCEDURE FROM SWEEPING TO SCARIFYING / MOWING

1. Remove the belt cover and slacken bolts to release belt tension. Remove the drive belts.
2. Remove the front brush strip and both side rubber skirts.
3. Raise the machine on the link arms and remove the brush rotor by removing the bearing bolts, and lower rotor to the ground.
4. Place scarifying/mowing rotor onto the trolley, and with machine lifted up on the tractor link arms push the rotor trolley under the machine and gently lower the machine down onto the rotor and line the bearings up with the mounting holes, fit and tighten bolts and nuts.
5. Fit the pulleys onto the rotor and drive shaft. The larger pulley goes onto the drive shaft and the smaller pulley on the rotor. Fit and tension the belts, the belts should have approximately 10-12mm of deflection half way between the pulleys. Refit the belt guard.
6. Fit the anti-scalp skids onto each side where the rubber skirt was removed. Set the side skids as low as possible to prevent scalping.
7. Fit rubber stone guard to front brush carrier.
8. Run and test machine before going into work.

FITTING / CHANGING SCARIFYING / FLAIL BLADES

Raise the hopper using the tractor hydraulics and secure in the raised position using the hopper prop.

NEVER CLIMB INTO THE FRAME UNDERNEATH THE HOPPER UNLESS THE HOPPER PROP IS FIRMLY IN POSITION.

The rotor is now accessible for changing the knives / flails.

FITTING BLADES FOR SCARIFYING

IMPORTANT: ALL DIRECTIONS START FROM DRIVE END OF ROTOR.

ROW A - Scarifying tine in 2nd clevis and every other.

ROW B - Fan blade **only**. Every clevis.

ROW C - Scarifying tine in 2nd clevis and every other.

ROW D - Scarifying tine in 1st clevis and every other.

ROW E - Fan blade **only**. Every clevis.

ROW F - Scarifying tine in 1st clevis and every other.

If required, mowing blades can be filled with scarifying knives, but it is very important that the correct pattern is used for the scarifying knives and that all mowing flails are kept in a symmetrical pattern so as not to put the rotor out of balance.

FITTING BLADES FOR MOWING

Attach machine to tractor, tip hopper and locate hopper prop. Rotor is now accessible for fitting blades.

Fit pairs of flails back to back in rows A, C, D and F with axles and pins.

In rows B and E, fit fan blades only.

IMPORTANT: BLADES MUST BE IN STRICT PATTERN AS INDICATED.

SETTING UP FOR MOWING AND SCARIFYING

Raise the machine on the tractor hydraulics and raise or lower the height adjustment bars on the wheel assemblies.

It is advisable to move them in single increments and test on an inconspicuous area to ensure the desired height has been obtained.

TROUBLESHOOTING

FAULT	CAUSE	REMEDY
Not sweeping correctly	<ol style="list-style-type: none">1. Worn brushes2. Belts slipping3. Brushes set too high	<ol style="list-style-type: none">1. Replace brushes2. Adjust belt tension3. Lower brush to the ground
Blowing dry leaves away and not collecting	<ol style="list-style-type: none">1. Engine revs too high2. Front brush worn or missing	<ol style="list-style-type: none">1. Reduce engine revs2. Replace front brush bar
Drumming noise	<ol style="list-style-type: none">1. Brushes set too low	<ol style="list-style-type: none">1. Raise sweeping height
Vibration	<ol style="list-style-type: none">1. Brushes set too low2. Brushes loose on main rotor3. Brush broken	<ol style="list-style-type: none">1. Raise sweeping height2. Tighten up brushes3. Replace brush

SPECIFICATION

<u>MODEL</u>	<u>STC 180</u>	<u>STX 180</u>
Working Width:	1.8m	1.8m
Overall Width:	2.2m	2.2m
Overall Height:	1.56m	1.56m
Overall Length:	3.24m	3.24m
Hopper Capacity:	2.25m ³	2.25m ³
Power Requirement:	25 HP	25 HP
Tyre Pressure Front:	28 psi	28 psi
Tyre Pressure Rear:	20psi	20psi
Weight Approximately:	635kg	635kg

PARTS ILLUSTRATION - MAINFRAME ASSEMBLY - PLATE 1

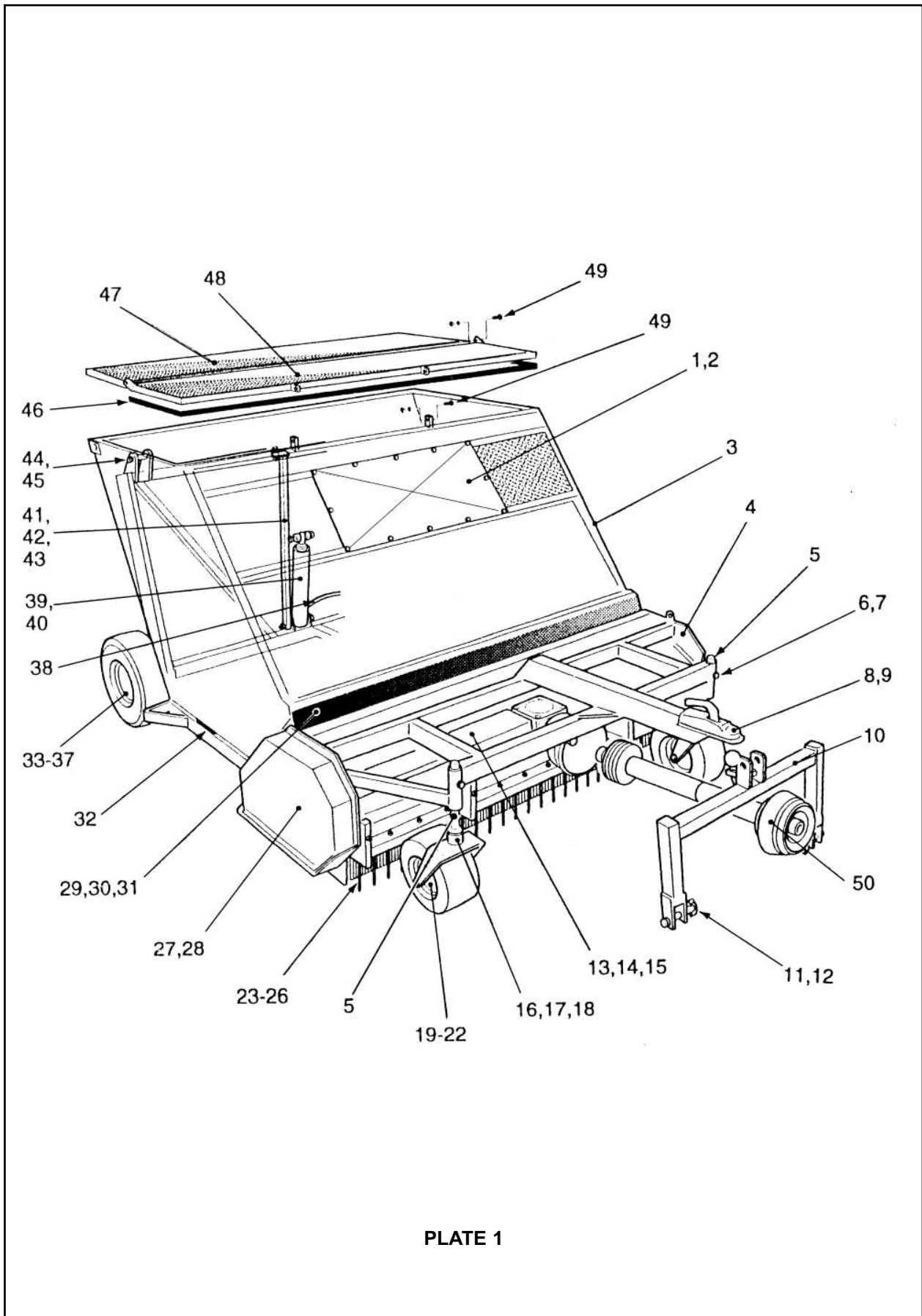


PLATE 1

PARTS LIST - MAINFRAME ASSEMBLY - PLATE 1

Item No.	Part No.	Description	Qty. per Machine
1	WX-17680	Front Cover	1
2	WX-26601	Front Cover Fastening Set	1
3	WX-10899	Hopper	1
4	WX-10879	Mainframe	1
5	WX-4351	Height Adjustment Bar	2
6	WX-0628	Height Adjustment Pin	2
7	WX-0121	R Clip	2
8	WX-13056	Ball Hitch	1
9	WX-9501	Ball Hitch Fastening Set	1
10	WX-18180	'A ' Frame	1
11	WX-0826	Link Pin	2
12	WX-0227	Linch Pin	2
13	WX-12577	Inner Shaft Cover	1
14	WX-12977	Outer Shaft Cover	1
15	WX-26701	Shaft Cover Fastening Set	1
16	WX-13551	Wheel Fork	2
17	WX-1520	Special Washer	2
18	WX-6303	Wheel Fork Fastening Set	2
19	WX-4452	Front Wheel	2
20	WX-7402	Wheel Axle Fastening Set	2
21	WX-4452C	Front Wheel Inner Tube	2
22	WX-4452A	Front Wheel Tyre	2
23	WX-7058	Tine Carrier (STX Only)	1
24	WX-3125	Tine (STX Only)	14
25	WX-27601	Tine Carrier Fastening Set (STX Only)	4
26	WX-20801	Tine Fastening Set (STX Only)	14
27	WX-12377	Belt Guard	1
28	WX-27001	Belt Guard Fastening Set	1
29	WX-13478	Front Apron	1
30	WX-6576	Clamp Bar	1
31	WX-27101	Clamp Bar Fastening Set	1
32	WX-18480	Rubber Buffer	2
33	WX-4152	Rear Wheel	2
34	WX-13051	Wheel Hub	2
35	WX-1538	Wheel Bearing Outer	2
36	WX-0838	Wheel Bearing Inner	2
37	WX-4152A	Rear Tyre	2
38	WX-14056	Hydraulic Hose Kit	1
39	WX-0456	Hydraulic Ram	1
40	WX-27201	Ram Fastening Set	1
41	WX-17980	Hopper Prop	1

PARTS ILLUSTRATION - MAINFRAME ASSEMBLY - PLATE 1

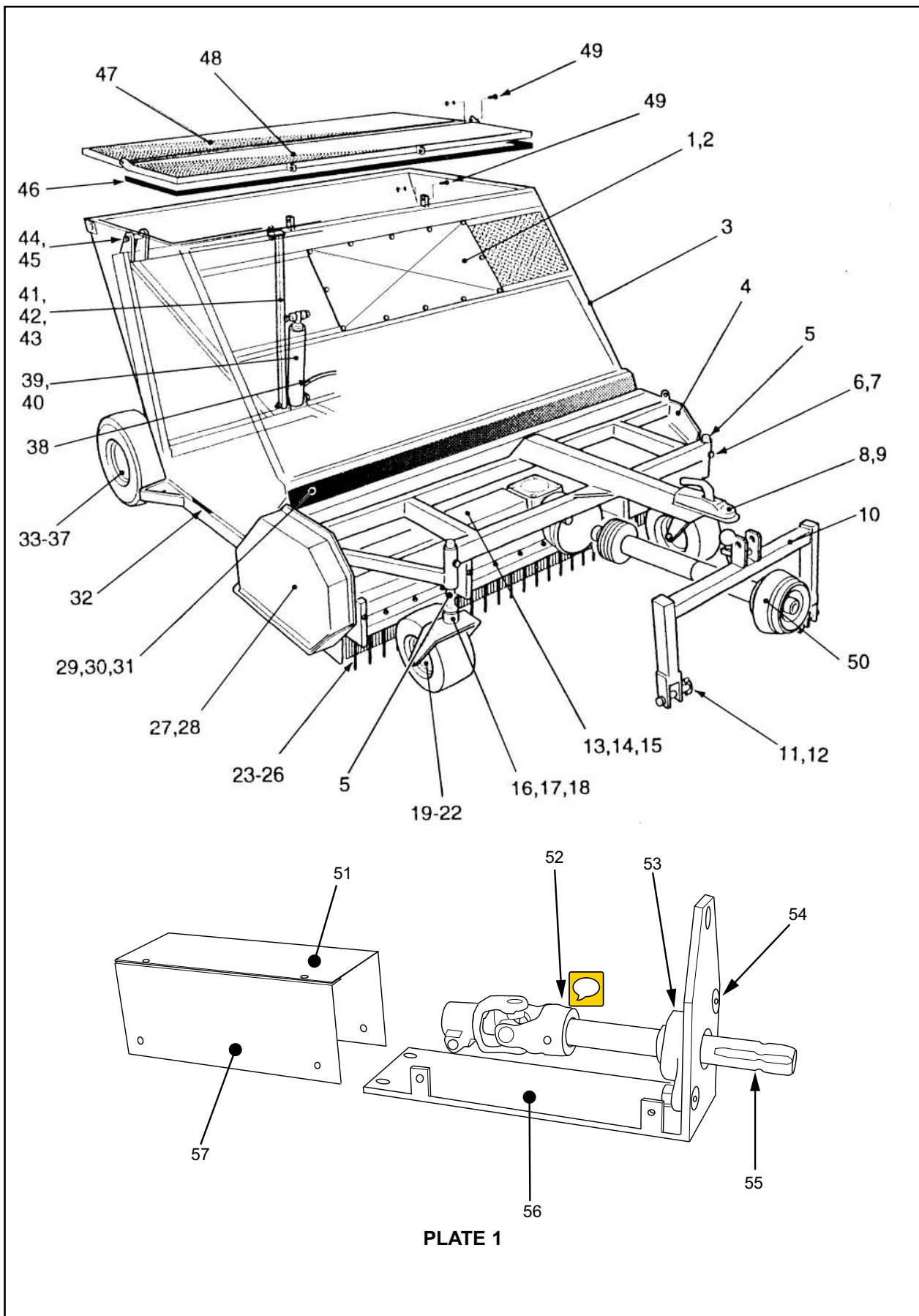


PLATE 1

PARTS LIST - MAINFRAME ASSEMBLY - PLATE 1

Item No.	Part No.	Description	Qty. per Machine
42	WX-0227	Linch Pin	1
43	WX-27301	Prop Fastening Set	1
44	WX-0826	Hinge Pin	2
45	WX-3822	Spirol Pin	2
46	WX-10278/18	Rubber Trim	1
47	WX-18780	Rear Hopper Screen Door	1
48	WX-18880	Front Hopper Screen Door	1
49	WX-27401	Hopper Door Fastening Set	4
50	WX-6181	P.T.O. Shaft	1
50	WX-6281	P.T.O. Shaft (with O/R Clutch)	1
51	WX-13477	Extension Shaft Guard	1
52	WX-6581	Universal Joint	1
53	WX-6838	Extension Shaft Bearing	1
54	WX-29901	Bearing Fastening Set	1
55	WX-6381	Extension Shaft	1
56	WX-6976	Shaft Support Bracket	1
57	WX-13377	Extension Shaft Guard	1
N/S	WX-6481	Universal Joint Grub Screw	1
N/S	WX-14156	Weld on Single Hose Clip	8

PARTS ILLUSTRATION - DRIVE ASSEMBLY (SWEEPER) - PLATE 2

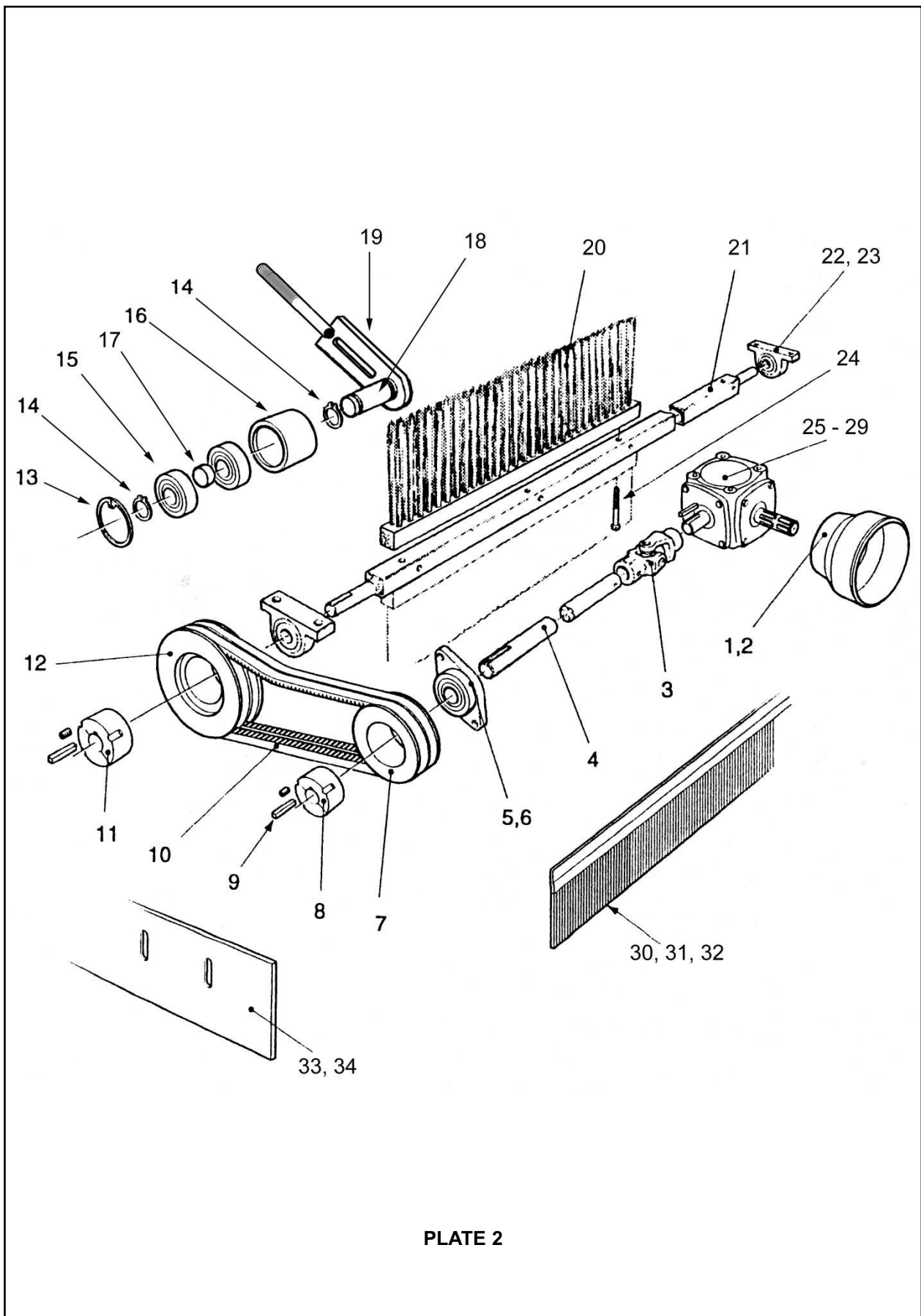


PLATE 2

PARTS LIST - DRIVE ASSEMBLY (SWEEPER) - PLATE 2

Item No.	Part No.	Description	Qty. per Spindle
1	WX-5177	P.T.O. Guard	1
2	WX-3101	P.T.O. Guard Fastening Set	1
3	WX-6081	Drive Coupling	1
4	WX-11866	Drive Shaft	1
5	WX-0541	Bearing	1
6	WX-6501	Bearing Fastening Set	1
7	WX-9762	Drive Pulley	1
8	WX-8762	Taper Lock Brush	1
9	WX-0147	Key	2
10	WX-4334	Drive Belt Sweeper	2
10	WX-4334	Drive Belt Scarifier	3
11	WX-5962	Taper Lock Bush	1
12	WX-9662	Drive Pulley	1
13	WX-0722	Jockey Circlip	1
14	WX-0622	Jockey Circlip	2
15	WX-1438	Jockey Bearing	2
16	WX-9862	Jockey Pulley	1
17	WX-11666	Jockey Pulley Spacer	1
18	WX-14166	Jockey Pillar	1
19	WX-14266	Jockey Bracket	1
20	WX-2870	Brush Strip (STC Only)	12
20	WX-7570	Brush Strip (STX Only)	12
21	WX-10966	Brush Rotor	1
22	WX-1141	Rotor Bearing	2
23	WX-6301	Rotor Bearing Fastening Set	2
24	WX-5001	Brush Fastening Set	6
25	WX-7557	Gearbox	1
26	WX-2557	Gearbox Elbow	1
27	WX-12257	Breather Plug	1
28	WX-0447	Key	1
29	WX-27801	Gearbox Fastening Set	1
30	WX-6376	Front Brush Carrier	1
31	WX-1776	Front Brush	1
32	WX-26801	Front Brush Carrier Fastening Set	1
33	WX-13678	Rubber Skirt	2
34	WX-26901	Rubber Skirt Fastening Set	2

PARTS ILLUSTRATION - MOWER/SCARIFIER - PLATE 3

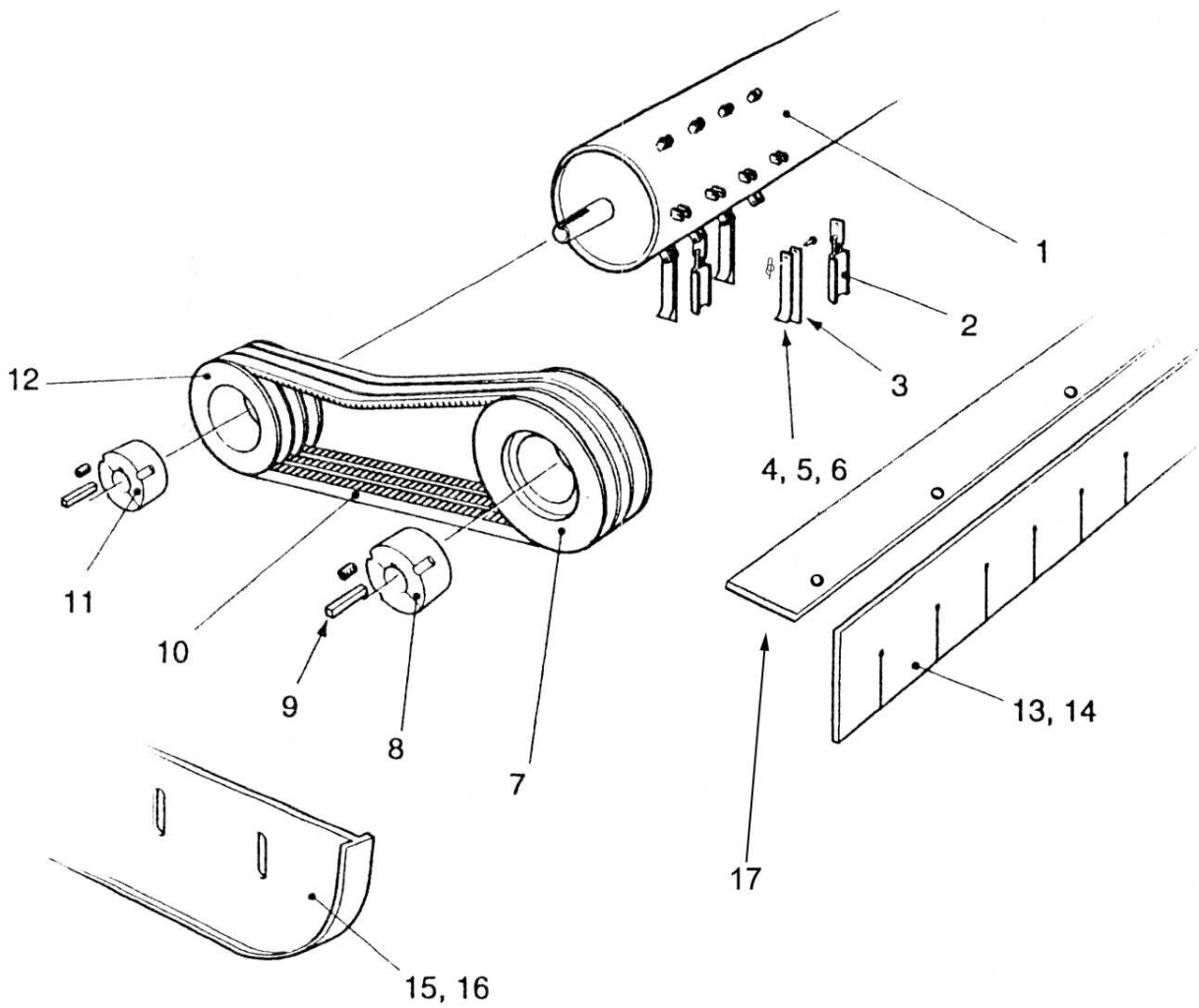


PLATE 3

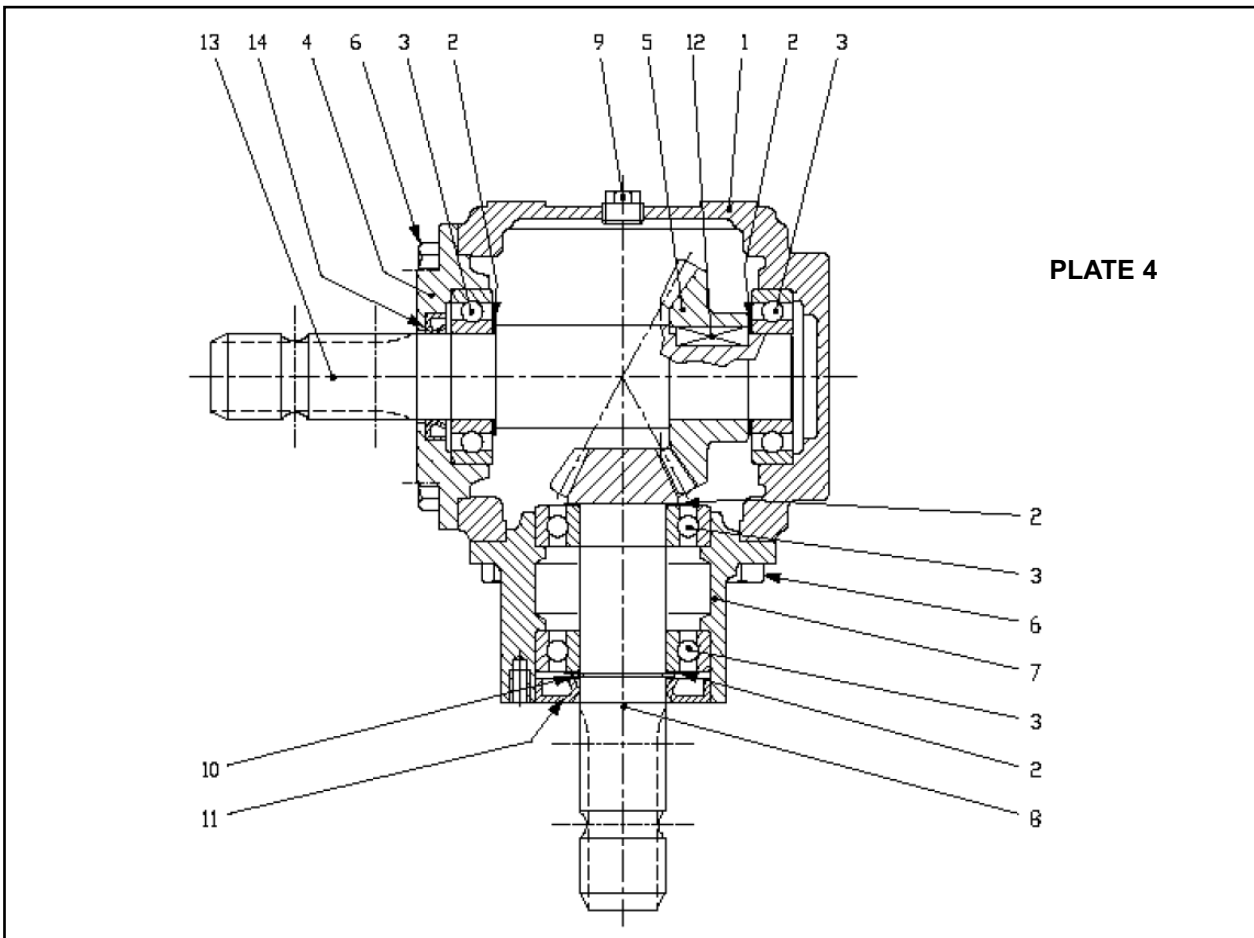
PARTS LIST - MOWER/SCARIFIER - PLATE 3

Item No.	Part No.	Description	Qty. per Machine
1	WX-11366	Scarifying Rotor	1
2	WX-14061	Fan Blade (Mowing)	56
2	WX-14061A	Fan Blade (Scarifier)	56
3	WX-17671	Scarify Knife	56
4	WX-11020	Flail Blade (Pair)	108
5	WX-10999	Flail Axle Pin	164*
5	WX-10999	Flail Axle Pin	112**
6	WX-6802	Rue Ring Cotter	164*
6	WX-6802	Rue Ring Cotter	112**
7	WX-9962	Pulley (3 Row)	1
8	WX-6862	Taper Lock Bush	1
9	WX-0147	Key	2
10	WX-4334	Drive Belt	3
11	WX-8962	Taper Lock Bush	1
12	WX-10062	Pulley (3 Row)	1
13	WX-11978	Rubber Stone Guard	1
14	WX-9601	Rubber Stone Guard Fastening Set	1
15	WX-3474	Side Skid	2
16	WX-26901	Side Skid Fastening Set	2
17	WX-8458	Flail Guard	1

* Mower

** Scarifier

PARTS ILLUSTRATION - GEARBOX - PLATE 4



PARTS ILLUSTRATION - GEARBOX - PLATE 4

Item No.	Part No.	Description	Qty. per Machine
1	0.259.0300.00	Casing	1
2	0.259.7500.00	Shim	4
3	8.0.1.00025	Bearing	4
4	0.259.1305.00	Cover	1
5	0.259.6001.00	Crown Wheel	1
6	8.1.1.00090	Bolt	8
7	0.259.1300.00	Extension	1
8	0.259.5003.00	Pinion	1
9	8.6.5.00006	Plug	1
10	8.5.1.00005	Snap Ring	1
11	8.7.3.00055	Oil Seal	1
12	8.4.1.00057	Parallel Key	1
13	0.259.3101.00	Shaft	1
14	8.7.3.00028	Oil Seal	1

PTO SHAFT OPERATION AND MAINTENANCE

IMPORTANT!

PTO drive shafts must only be used for their intended purpose.

PTO drive shafts are designed for specific machine types and power requirements.

They must not be replaced by other models.

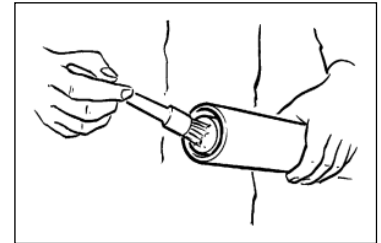
Ensure that the PTO drive shaft is securely connected.

Only use a completely protected drive system:

PTO drive shaft with complete guard and complementary guard on tractor and implement. A complete guard is essential in all working positions.

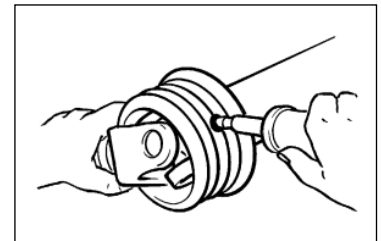
LUBRICATION

Lubricate with quality grease before starting work and every 8 operating hours.



Clean and grease the PTO drive shaft before each prolonged period of non-use.

Grease the guard tubes in winter to prevent freezing.

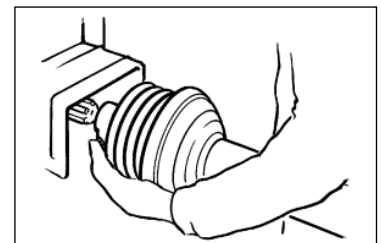


COUPLING THE PTO SHAFT

Clean and grease the PTO and PIN

Q.-d pin

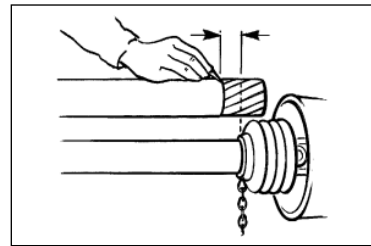
Press q.-d. pin and simultaneously push PTO drive shaft onto PTO until pin engages.



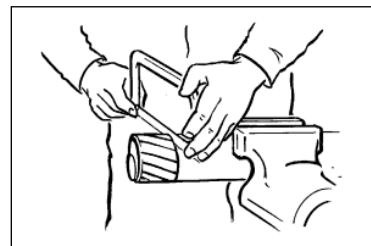
PTO SHAFT OPERATION AND MAINTENANCE

LENGTH ADJUSTMENT

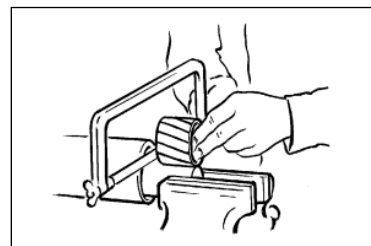
To adjust the length, hold the half-shafts next to each other in the shortest working position and mark them.



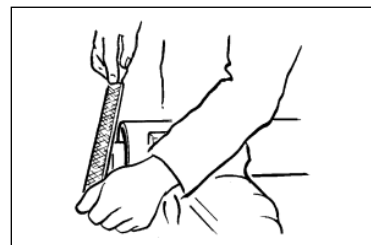
Shorten inner and outer guard tubes equally.



Shorten inner and outer sliding profiles by the same length as the guard tubes.



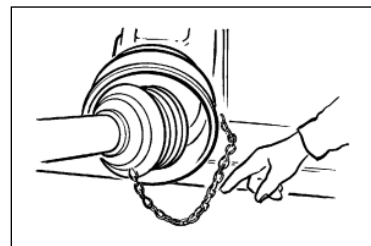
Round off all sharp edges and remove burrs.
Grease sliding profiles.



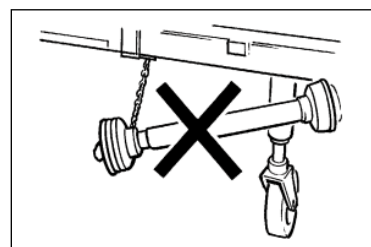
No other changes may be made to the PTO drive shaft and guard.

CHAINS

Chains must be fitted so as to allow sufficient articulation of the shaft in all working positions.



The PTO drive shaft must not be suspended from the chains!





Certificate of CE Conformity

Machine Model:

STC/STX 180

Description:

SWEEPER COLLECTOR

*I hereby certify that the machine detailed hereon
conforms to:*

**European Directives 2008/42/EC
Supply of Machinery Regulations 2008
As amended 91/368EEC – 93/44EEC – 93/68EEC**

Signed:

A handwritten signature in black ink, consisting of a large, stylized 'R' followed by a horizontal line and a flourish.

.....
Quality Manager

Date:

May 2011

Wessex International

Charlton House, Caxton Place, East Portway Industrial Estate, Andover, Hampshire SP10 3QN
Telephone: 01264 345870 Fax: 01264 345 880

www.wessexintl.com



Wessex International
Charlton House, Caxton Close, East Portway Industrial Estate, Andover Hampshire. SP10 3QN
Telephone: 01264 345870 Fax 01264 345880
e-mail: sales@wessexintl.com

www.wessexintl.com
