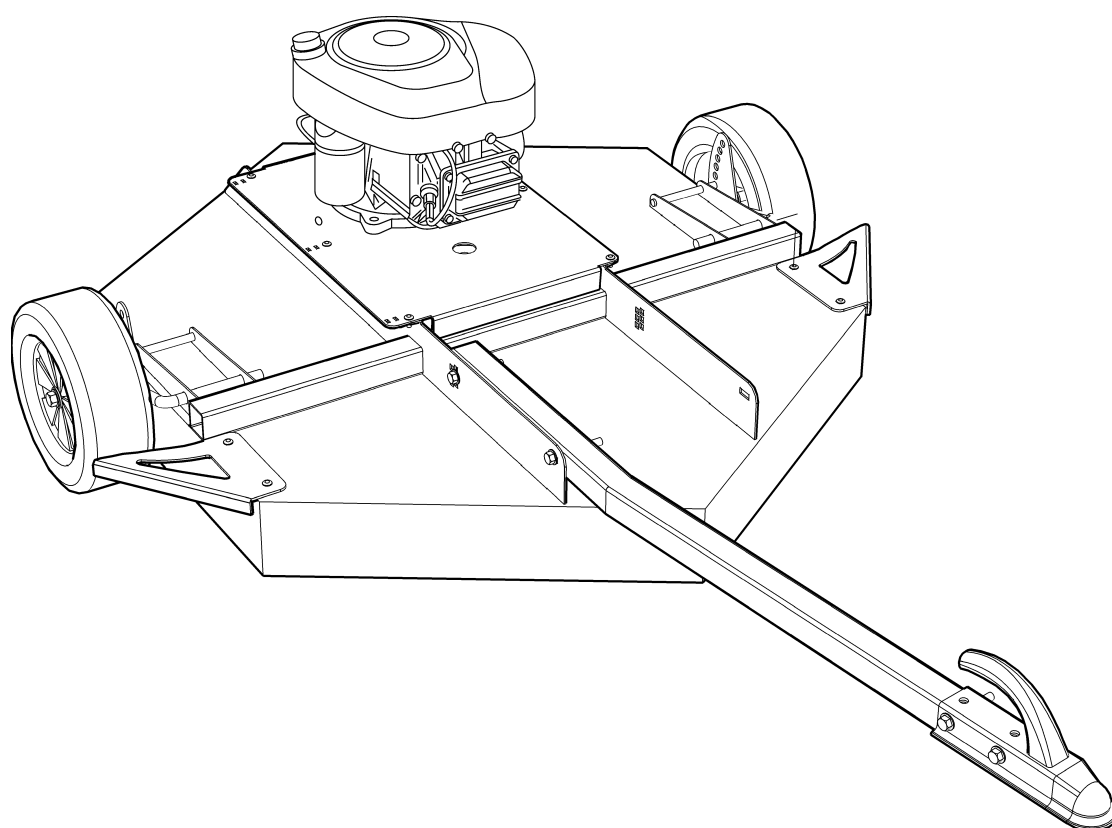


Operation Manual and Parts Book

Wessex AT110 Trailed Rotary Mowers

Serial Numbers after 110778



Product Code: L2017

CONTENTS

Welcome to your new Wessex Product	2
Safety Decals	3, 4
Important Safety Warnings	5
Important Safety Warnings	6, 7
Warranty	8
Setting up your Wessex Country Mower	9
Using your Wessex Mower / Cutting Height Adjustment	10
Maintenance / Belt Tension / Belt Change / Blades	11
Lubrication / General	12
Troubleshooting	13
Winter Storage	13
Parts Illustration - AT110 Mainframe Assembly	14
Parts List - AT110 Mainframe Assembly	15
Parts Illustration - Spindle Assembly	16
Parts List - Spindle Assembly	16
CE Certificate	17

WELCOME TO YOUR NEW WESSEX PRODUCT

Thank you for purchasing a Wessex product. As a Wessex customer, you now number among the most important people of our business and we will endeavour to give you the best service available through our dealer network.

Please read this Manual carefully and familiarise yourself and other persons that will be using the machine with its contents, to ensure the optimum performance and working life of your machine. It is advisable that a copy of this Manual is kept in the workshop and one copy with the machine. Further copies are available through your dealer.

On delivery, your dealer should go through the workings of the machine with you, explaining the setting up procedures, all of which are contained in this manual for further reference. The Warranty Registration Form must also be completed and returned to us **within 7 days of delivery** in order to validate the Warranty.

**PLEASE READ THE FOLLOWING PAGES CAREFULLY BEFORE USING YOUR MACHINE
AND KEEP THIS MANUAL IN A SAFE PLACE.**

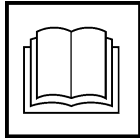


**THIS SAFETY SYMBOL IS TO ALERT OPERATORS OF A HAZARD
THAT MAY RESULT IN INJURY.
ALWAYS FOLLOW INSTRUCTIONS CAREFULLY**

SAFETY DECALS



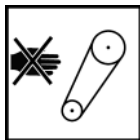
- GB **ATTENTION** Description of pictograms.
 F **ATTENTION** Description des pictogrames.
 D **VORSICH** Beschreibung der Piktogramme.



- GB Read Operating manual before use.
 F Lisez Manual D'Opération avant l'utilisation.
 D Vor der Benutzung, Betriebshandbuch lesen.



- GB Ear defenders must be worn.
 F Défenseurs des oreilles doivent être portés.
 D Gehörschutz getragen werden.



- GB Never remove guards or attempt adjustment until rotor has stopped.
 F Ne retirez jamais les gardes ou d'ajustement tentative jusqu'à ce que toutes les pièces mobiles ont été interrompus.
 D Schutzvorrichtung niemals abnehmen oder einstellung versuchen, bevor der rotor abstellt.



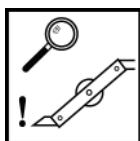
- GB Bystanders must be at least 20 metres from machine range of action.
 F Des spectateurs doivent s'écarter au moins 20 mètres du rayon d'action de la machine.
 D Umstehenden müssen sich mindestens 20 meter vom maschinenbetriebsraum entfernen.



- GB Stand clear. Flying objects possible.
 F S'écarter! Possibilité d'objets volants.
 D Zurückbleiben! Herumfliegende Objekte möglich



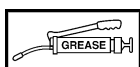
- GB Lift Machine before turning
 F Levez la machine avant de la tourner
 D Maschine aufheben, bevor man sie umdreht.



- GB Examine blades regularly. The operator is responsible for machine damage caused by unbalanced rotors.
 F Examinez des lames régulièrement. L'opérateur est responsable des dommages à la machine provoqués par des rotors mal équilibrés
 D Klingen regelmäßig kontrollieren. Der Arbeiter ist an den durch unausgewogenen rotoren maschinenschäden verantwortlich.



- GB Keep hands and feet clear
 F Garder les mains et les pieds.
 D Halten Sie Ihre Hände und Füße.



- GB Grease points
 F Les points de graissage
 D Grease Punkte.

SAFETY DECALS



GB It is the operators responsibility to ensure that the machine is compatible with the loading capacity of the towing vehicle.

F Il est de la responsabilité des opérateurs afin de s'assurer que la machine est compatible avec la capacité de chargement du véhicule tracteur.

D Es ist den Betreibern dafür zu sorgen, dass die Maschine mit der Belastbarkeit des Zugfahrzeugs ist.



GB Never carry passengers on implements unless designed to do so.

F Ne jamais transporter des passagers sur instruments sauf s'ils sont conçus pour le faire.

D Niemals Passagiere implementiert, es sei denn ausgelegt, dies zu tun.

IMPORTANT SAFETY WARNINGS



Wessex machines are guarded for your protection, but you must always observe certain elementary precautions. Machines are potentially **dangerous** and should be used with the greatest respect and **ALL OPERATORS MUST** read this manual and be aware of all safety precautions.

1. **NEVER** attempt any adjustment whatsoever, unless the machine is **COMPLETELY** at a standstill.
2. **NEVER** attempt to clear any obstructions around the mower unless the machine is **COMPLETELY** at a standstill.
3. **NEVER** remove belt guards unless the machine is **COMPLETELY** at a standstill.
4. **NEVER** remove safety guards which are provided for your protection.
5. **NEVER** operate the mower with people behind, keep everybody (especially children and animals) at a safe distance, **minimum 20 metres**.
6. Stand well back from the machine when cutters are spinning.
7. Regularly inspect the **BLADES AND FIXING BOLTS** to ensure that they are in tip-top condition. Replace blades **IMMEDIATELY** if any signs of fracture or excess wear becomes apparent. Serious damage, which is excluded from our warranty conditions, may result from using your mower with an unbalanced rotor. When replacing blades, always fit new mounting bolts and nuts to ensure that the rotor is balanced and running smoothly.

HEALTH AND SAFETY - Noise at Work Regulations

READING AT THE OPERATORS EAR

Wessex AT Rotary Mower: Approximately 98 D.B.A

Depending on conditions and material being cut, this reading may alter, it is therefore advisable for users to do their own assessment.



In compliance with the above regulations, Ear Protectors must be worn when operating machinery.

IMPORTANT ATV SAFETY WARNINGS

READ THE FOLLOWING CAREFULLY

IMPORTANT SAFETY INSTRUCTIONS ON COUPLING IMPLEMENTS AND ATTACHMENTS TO ATV'S



TRAINING

- It is most essential that all operators of ATV's are trained by a certified training organisation.
- It is strictly forbidden that any person under 16 years of age should ride an ATV.
- Any person 17 years of age must have had training before towing a trailer with an ATV.
- Contact your local HSE office for approved training courses.

BODY PROTECTION

- Remember that when riding on an ATV the only form of protection that you have is what you wear. **ALWAYS** wear a helmet, eye protection and suitable robust clothing.
- Never operate an ATV or attachments while under the influence of alcohol or non-prescription drugs.
- Contact your doctor before operation of an ATV or attachments while under the influence of any prescription drugs.

ATV MANUAL

- Before coupling any implement to your ATV refer to your ATV handbook.

STABILITY

- When using equipment coupled to an ATV it is very important to remember that the handling characteristics of your ATV will change dramatically, whether the additional load is placed on the front or rear rack or trailed on the towing ball hitch.

WEIGHT CAPACITY

- Always ensure that the implement or attachment that you are coupling to the ATV is within the ATV's drawbar loading or weight carrying capacity. Refer to the ATV manufacturer's handbook to obtain information on the specific capacities.
- It is most important that you know the weight of your load, especially when on slopes or hillsides.
- As a guide, on level ground with an unbraked implement, the weight of the implement should be approximately no more than twice the unladen weight of the ATV. This should be reduced on sloping, uneven or rough ground.

WEIGHT TRANSFER

- Always take great care when towing loads which may be subject to weight transfer e.g. liquids or livestock, especially on hillsides and slopes.
- Always restrict the movement of animals or rolling objects in a trailer.

IMPORTANT ATV SAFETY WARNINGS

TOWING

- Never tow loads larger or heavier than recommended for your ATV. (See ATV hand book).
- Never tow or turn across a slope.
- Never tow down a steep slope with a large or heavy load.
- When towing heavy loads there is a significant risk of jack-knifing or overturning.

ROUGH TERRAIN

- Always take care when operating implements on rough terrain or uneven ground.
- Take special care when operating on slippery surfaces especially hill sides or slopes.
- Take extra care when towing on hillsides, slopes or rough terrain.

OPERATING ON ROADS

- Implements are not designed for travelling distances on roads but when crossing or going short road distances always travel slowly and do not exceed 20 KPH.
- Make sure that your equipment complies with Road Vehicle Lighting Regulations.
- Ensure that you have the correct insurance cover and comply with all relevant laws.

LOAD SECURITY

- Always secure your load firmly with ratchet straps.
- Make sure that your load is evenly; distributed.
- Never stack a high load, high loads increase the risk of overturning.

PASSENGERS

- Never carry passengers on any kind of implement or attachment, especially children.

MAINTENANCE

- Service your ATV and attachments as per the manufacturer's handbook. Regular servicing of your ATV will ensure that it will steer, stop and handle to its best ability and your attachment will operate as safely and effectively as possible. Regular servicing helps ensure the longest possible working life for your equipment.

EQUIPMENT SAFETY INSPECTION

- Check tyre pressure, incorrect tyre pressure can seriously affect the handling of your ATV. (See Operators handbook).
- Maintain your equipment regularly to keep it in safe working order.

ROUTE / RISK ASSESSMENT

- Assess and plan the route that you intend to travel to avoid any type of hazards i.e. rocks, boulders, ditches, hidden fences or wire, pot holes, low hanging branches or any other type of hazard.
- Where possible stay with a routine route to avoid hazards.
- The risk may change in wet or wintery conditions, avoid slopes where possible.

WARRANTY

Your Wessex product or equipment is warranted free from defect in workmanship or manufacture for one year from date of purchase. Any parts which appear to us to be defective, either in material or workmanship shall be replaced or repaired at no cost to the purchaser, subject to the following conditions:

1. The registration card enclosed with this booklet must be returned to us within seven days of purchase.
2. Any failure in the machine should be reported in the first instance immediately to your dealer, who will act on your behalf to resolve the matter to your satisfaction.
3. The defective parts will be returned by your dealer to us, accompanied by a full statement describing the failure and the circumstances and conditions in which the failure occurred.
4. The following are specifically excluded from our terms of warranty:
 - a) Fair wear and tear, especially to belts, brushes, blades and spinners.
 - b) Damage to blades or brushes caused through incorrect positioning of the rotor (see instructions).
 - c) Damage caused by neglect or lack of lubrication.
 - d) Damage caused by misuse or abuse.
 - e) Damage caused whilst the machine is in transit.
 - f) Damage caused to the frame of the machine by running the machine with unbalanced rotors, blades or spinners.
 - g) Damage caused to the machine by use with loose nuts, bolts, screws or any other type of fittings.
5. The warranty is for the benefit of the first user only.
6. Wessex International decisions will be final and binding.

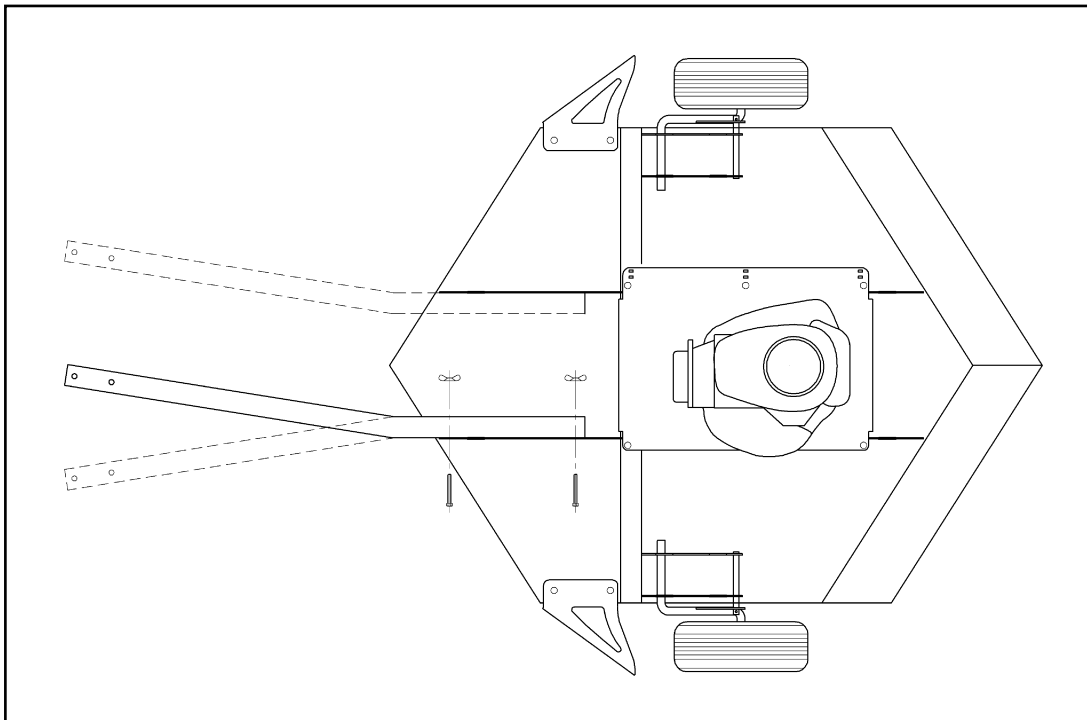
Note:

It is recommended that every machine is inspected after one hour of operation to check that all nuts, bolts, screws or any other types of fixings are tight and any loose fixings or components should be rectified as appropriate.

Further inspections should be carried out at regular intervals thereafter.

SETTING UP YOUR WESSEX COUNTRY MOWER

1. Attach the towbar to the mower as shown below using the supplied bolts and knobs. The mower can be pulled directly behind your ATV or it can be offset to either side by changing the position of the towbar.
2. Reverse your towing vehicle up to the machine, and connect to the ball hitch, ensuring that it is locked in position.
3. With the vehicle and machine on level ground, ensure that both wheels are set at the same height. Adjust the drawbar so that the deck is tilting slightly forward. To adjust the drawbar loosen the two thumb screws on the drawbar and adjust to required position.



USING YOUR WESSEX MOWER

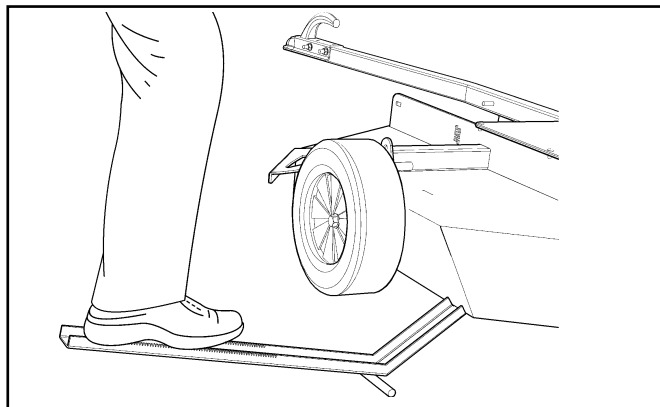
1. The engine on your mower can be started either with the throttle set at high or low revs, but always ensure that the revs are immediately adjusted so that the centrifugal clutch is either completely disengaged or completely engaged. Running the machine with the clutch partially engaged will rapidly cause wear to the clutch.
2. Depending on the volume of material to be cut, you will quickly arrive at the optimum forward speed that will not strain the engine, but will also give a fine cut. You will establish by experience what is the optimum forward speed for your conditions, but on regularly maintained grass you should achieve a good finish at 5 - 6 mph (8 - 9 km/h).
3. Long, wet grass will have to be cut more slowly. In very difficult conditions better results are obtained by making two passes, in opposite directions - lowering the cutting height for the second pass.

WARNING

When starting and stopping the engine keep hands and feet clear of deck. Always stop the engine before making any adjustments to the mower. After stopping the engine the blade will continue to rotate for up to 1 minute.

CUTTING HEIGHT ADJUSTMENT

1. Height adjustment change must be made with the engine switched off.
2. When adjusting the height of the cut always have the mower attached to the towing vehicle.
3. Simply put the end of the height adjustment lever under the edge of the mower deck close to the wheel.
4. Put your foot onto the non slip part of the lever and push down with your foot. Hold down while you adjust the height of the wheel by removing the pin from the wheel bracket then reposition the wheel bracket to the required height of cut and replace the pin. Slowly lower the mower deck down.
5. Repeat this procedure on the other side of the mower.
6. Always ensure that both wheels are set to the same height.



Height Adjustment Lever Part No. WX-21280

MAINTENANCE

BELT TENSION

- Check belt tension after the first hour of work and then after every 20 hours of work.
- The correct belt tension is approximately 12-15mm of deflection under thumb pressure halfway between the pulleys.
- To tighten the belts simply loosen off the four engine mounting bolts. Then adjust by pulling the engine back with the adjusting bolt situated in the centre at the rear of the engine mounting bracket.
- Having adjusted the belt then retighten the four engine mounting bolts.

BELT CHANGE

- To change the belt simply loosen off the belt adjusting bolts.
- Remove the 6 engine mounting plate bolts and nuts.
- From the rear of the engine lift the engine plate up approximately 100-150mm and place a block underneath.
- Remove the old belt and replace with a new belt.
- Retighen and adjust belt to correct tension.

BLADES

- Check the condition of the blade periodically. If blunt it can be sharpened by carefully grinding. Always ensure to sharpen it evenly to keep the rotor in balance.
- Do not run with an unbalanced rotor as this will cause damage to the machine. **Damage caused by use with an unbalanced rotor is not covered by warranty.**

LUBRICATION

- Check engine oil (See Engine Manual).
- Follow the recommended service intervals from the Engine Manual.
- Grease the ball hitch periodically.
- Grease the main cutter spindle every 20 hours. The grease nipple is on top of the main spindle underneath the front of the engine.

GENERAL

- Periodically check that all nuts and bolts are tight.
- Replace any worn or missing parts.
- Before winter storage clean the machine and lubricate as recommended.

SPARE PARTS

Spare parts for your Wessex Mower can be obtained through our extensive dealer network. For details of your nearest supplier or technical information, please email parts@wessexintl.co.uk or telephone 01264 345870.

TROUBLESHOOTING

FAULT	CAUSE	REMEDY
Leaving wheel track uncut	1. Forward speed too fast 2. Cutting height too high	Reduce forward speed Lower the cutting height
Bad quality of cut	1. Forward speed too fast 2. Excessive blade wear 3. Belt slipping	Reduce forward speed Replace the blade Tighten the belt
Excessive vibration	1. Damaged or missing blades 2. Main rotor bearings failed 3. Loose part	Inspect and replace the blade Inspect bearings, replace if damaged Check all nuts and bolts are tight
Excessive scalping	1. Cutting height too low	Raise the cutting height

WINTER STORAGE

Before winter storage, the AT110 Rotary Mower should be thoroughly inspected:-

- Repair or replace any worn or broken parts.
- Take special care to look at the blade, rotor and the bearings.
- Remove the belt and ensure that the rotor is free-spinning.
- Make sure that the belt is in good condition before re-fitting.
- Thoroughly wash the machine to remove all oil, grease, debris and materials.
- Grease up all grease points before storage to avoid any corrosion.
- Check or change the engine oil depending on the hours of work.

PARTS ILLUSTRATION - AT110 MAINFRAME ASSEMBLY - PLATE 1

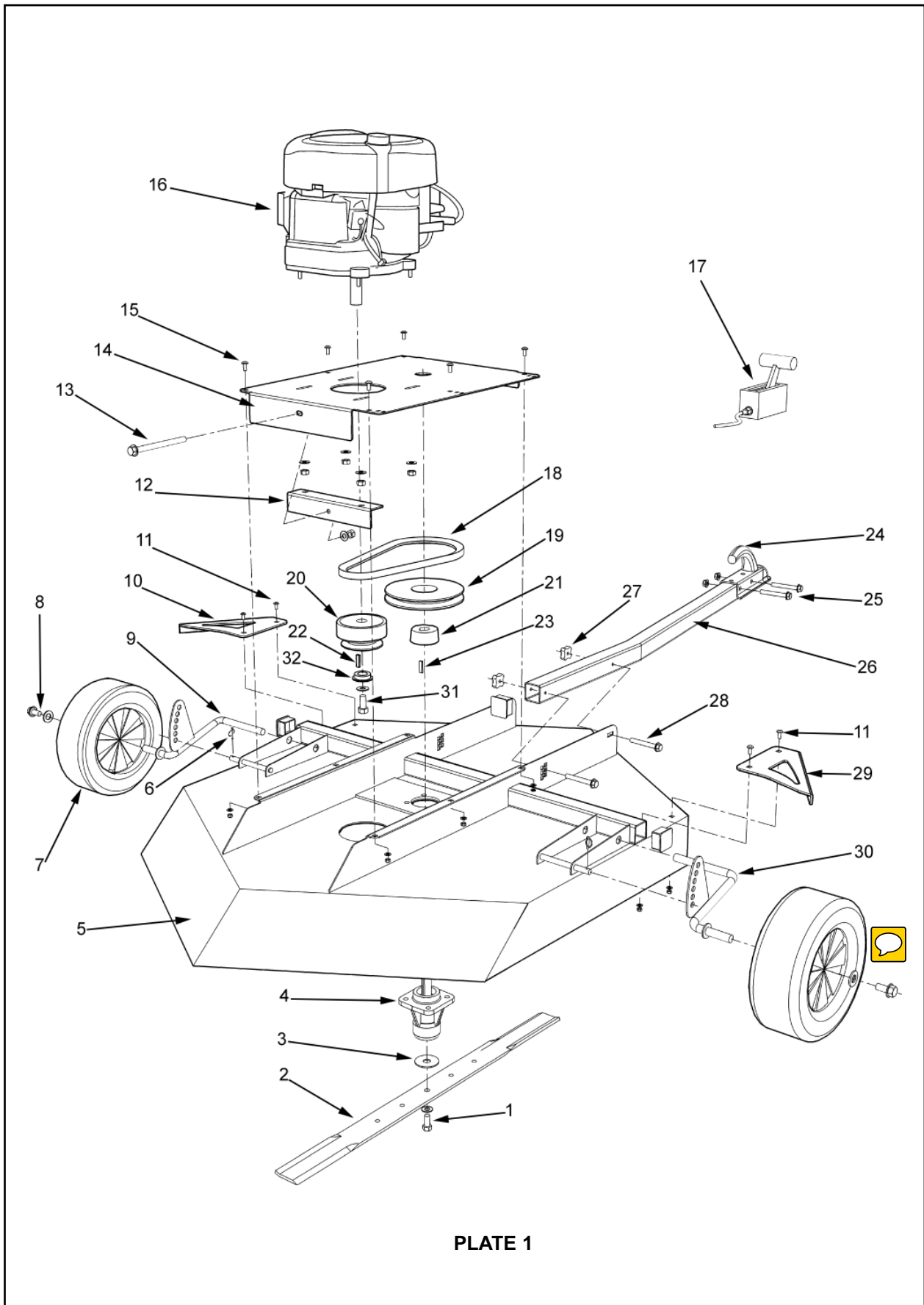
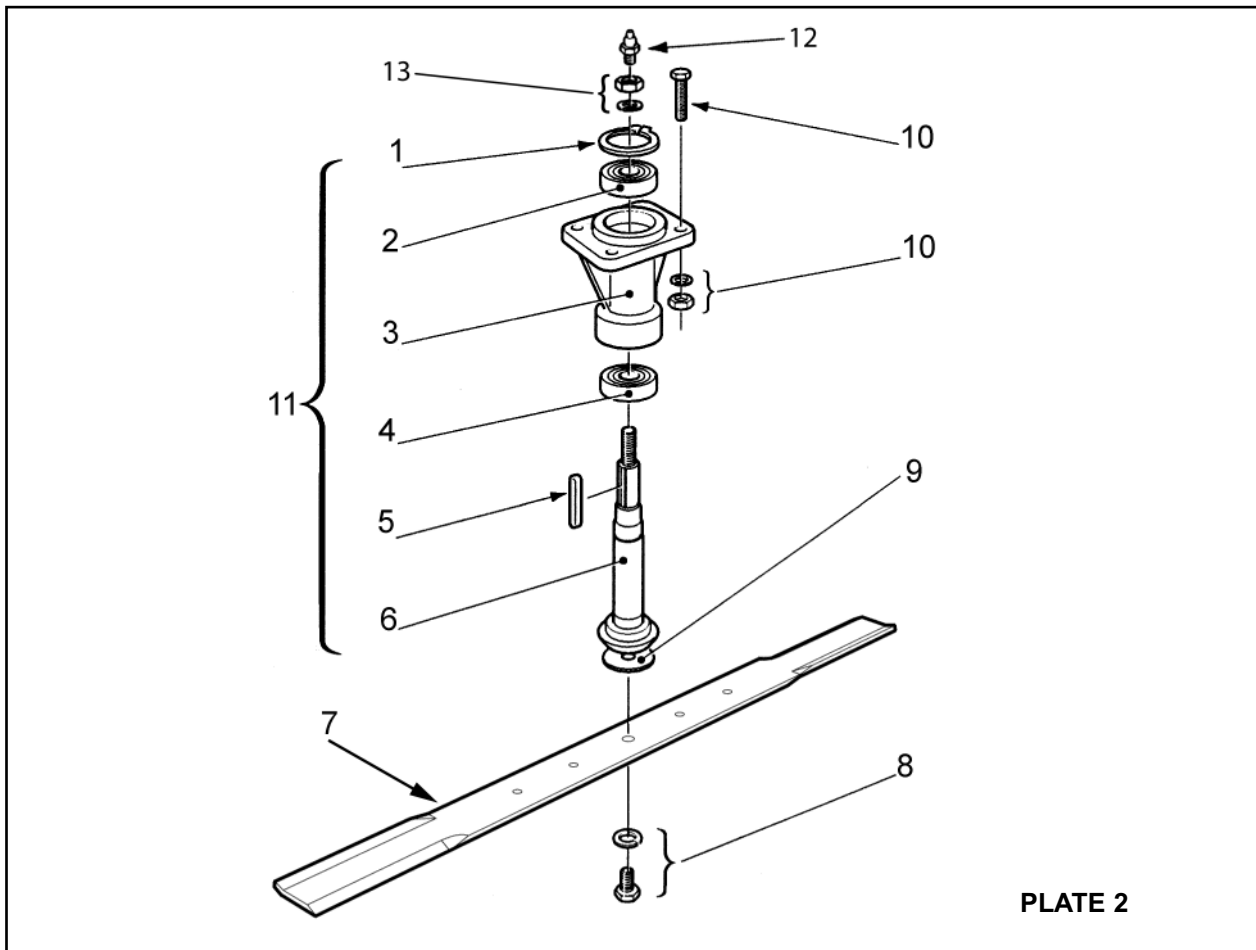


PLATE 1

PARTS LIST - AT110 MAINFRAME ASSEMBLY - PLATE 1

Item No.	Part No.	Description	Qty. per Machine
1	WX-0106	Blade Fastening Set	1
2	WX-10770	Blade	1
3	WX-0220	Fibre Washer	1
4	WX-5966B	Spindle Assembly	1
5	WX-18879	Mower Deck	1
6	WX-0527	Linch Pin	2
7	WX-6052	Wheel	2
8	WX-32501	Wheel Fastening Set	2
9	WX-15151	Left Hand Wheel Bar	1
10	WX-15377	Left Hand Wheel Guard	1
11	WX-32701	Wheel Guard Fastening Set	2
12	WX-13457	Adjuster Bracket	1
13	WX-32601	Adjuster Bolt	1
14	WX-13557	Engine Mounting Plate	1
15	WX-32701	Engine Mounting Plate Fastening Set	6
16	WX-5160	Engine (12.5 hp - B & S)	1
17	WX-17656	3100mm Throttle Cable Assembly	1
18	WX-5734	Belt	1
19	WX-12362	Pulley	1
20	WX-12562	Clutch Assembly	1
21	WX-12462	Taper Lock	1
22	WX-1347	Engine Key	1
23	WX-0147	Key	1
24	WX-2356	Ball Hitch	1
25	WX-9501	Ball Hitch Fastening Set	1
26	WX-19179	Drawbar	1
27	WX-2829	Thumb Wheel Knob	2
28	WX-32801	Drawbar Fastening Set	1
29	WX-15477	Right Hand Wheel Guard	1
30	WX-15251	Right Hand Wheel Bar	1
31	WX-33001	Clutch Fastening Set	1
32	WX-16466	Top Hat Spacer	1
N/S	WX-21280	Height Adjustment Lever	1

PARTS ILLUSTRATION - SPINDLE ASSEMBLY - PLATE 2



PARTS LIST - SPINDLE ASSEMBLY - PLATE 2

Item No.	Part No.	Description	Qty. per Machine
1	WX-1722	Circlip	1
2	WX-0838	Spindle Top Bearing	1
3	WX-5966	Spindle Housing	1
4	WX-0938	Spindle Bottom Bearing	1
5	WX-0147	Key	1
6	WX-6066	Spindle	1
7	WX-10770	Blade	1
8	WX-0106	Fastening Set	1
9	WX-0220	Washer	1
10	WX-2801	Spindles Housing Fastening Set	1
11	WX-5966B	Spindle Assembly	1
12	WX-0246	Grease Nipple	1
13	WX-5303	Fastening Set	1



Certificate of CE Conformity

Machine Model:

AT110

Description:

Rotary Mower

*I hereby certify that the machine detailed hereon
conforms to:*

**European Directives 2008/42/EC
Supply of Machinery Regulations 2008
As amended 91/368EEC – 93/44EEC – 93/68EEC
HSE AIS 33**

Signed:

A handwritten signature in black ink, appearing to be 'R. J. ...', is written over a dotted line that extends to the right.

Quality Manager

Date:

August 2011

Wessex International

Charlton House, Caxton Place, East Portway Industrial Estate, Andover, Hampshire SP10 3QN
Telephone: 01264 345870 Fax: 01264 345 880

www.wessexintl.com



Wessex International
Charlton House, Caxton Close, East Portway Industrial Estate, Andover Hampshire. SP10 3QN
Telephone: 01264 345870 Fax 01264 345880
e-mail: sales@wessexintl.com

www.wessexintl.com
