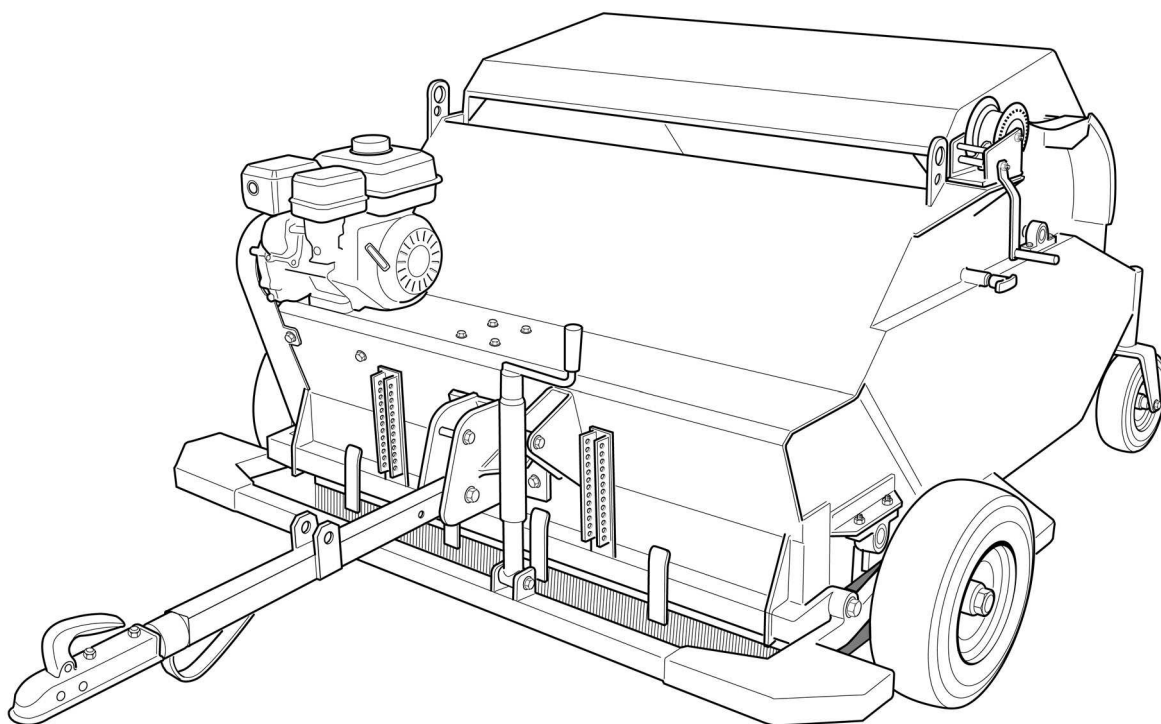


# Operation Manual and Parts Book

Wessex MTC 120 and MTX 120 Sweeper  
Paddock Cleaner & Dung Beetle Range



Product Code: L2020



|                                                                    |        |
|--------------------------------------------------------------------|--------|
| Welcome to your new Wessex Machine .....                           | 2      |
| Safety Decals .....                                                | 3, 4   |
| Important ATV Safety Warnings .....                                | 5, 6   |
| Important Safety Warnings .....                                    | 7      |
| Warranty .....                                                     | 8      |
| Coupling up your Sweeper Collectors .....                          | 9      |
| Setting up your Sweeper Collector .....                            | 10     |
| Compensating for Brush Wear .....                                  | 11     |
| Front Spring Tine Option .....                                     | 11     |
| Emptying the Hopper .....                                          | 11     |
| Maintenance .....                                                  | 12     |
| Belt Adjustment .....                                              | 12     |
| Lubrication .....                                                  | 12     |
| Tyre Pressures .....                                               | 12     |
| Troubleshooting .....                                              | 13     |
| Specification .....                                                | 13     |
| Parts Illustration - Mainframe Assembly .....                      | 14     |
| Parts List - Mainframe Assembly .....                              | 15     |
| Parts Illustration - Engine Drive Assembly .....                   | 16     |
| Parts List - Engine Drive Assembly .....                           | 17     |
| Parts Illustration - Gearbox Drive Assembly .....                  | 18     |
| Parts List - Gearbox Drive Assembly .....                          | 19     |
| Parts Illustration / Parts List - Towbar Option .....              | 20     |
| Parts Illustration / Parts List - Three Point Linkage Option ..... | 21     |
| Parts Illustration / Parts List - Spring Tine Set Option .....     | 22     |
| PTO Shaft - Operation and Maintenance .....                        | 23, 24 |
| CE Certificate .....                                               | 25     |

Thank you for purchasing a Wessex Collector MTC120/MTX120. As a Broadwood customer, you now number among the most important people of our business and we will endeavour to give you the best service available through our dealer network.

Please read this Manual carefully and familiarise yourself and other persons that will be using the machine with its contents, to ensure the optimum performance and working life of your machine. It is advisable that a copy of this Manual is kept in the workshop and one copy with the machine. Further copies are available through your dealer.

On delivery, your dealer should go through the workings of the machine with you, explaining the setting up procedures, all of which are contained in this manual for further reference. The Warranty Registration Form must also be completed and returned to us **within 7 days of delivery** in order to validate the Warranty.

**PLEASE READ THE FOLLOWING PAGES CAREFULLY BEFORE USING YOUR MACHINE AND KEEP THIS MANUAL IN A SAFE PLACE.**



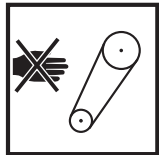
**THIS SAFETY SYMBOL IS TO ALERT OPERATORS OF A HAZARD  
THAT MAY RESULT IN INJURY.  
ALWAYS FOLLOW INSTRUCTIONS CAREFULLY.**



- GB **ATTENTION** Description of pictograms.  
 F **ATTENTION** Description des pictogrammes.  
 D **VORSICH** Beschreibung der piktogramme.



- GB Do not use without P.T.O. guard shaft.  
 F Ne pas utilise sans le dipositif de sûreté de l'arbre P.T.O. (arbre d'entraînement).  
 D Verwenden sie nicht ohne P.T.O. wache welle.



- GB Never remove guards or attempt adjustment until rotor has stopped.  
 F Ne retirez jamais les gardes ou d'ajustement tentative jusqu'à ce que toutes les pièces mobiles ont été interrompus.  
 D Schutzvorrichtung niemals abnehmen oder einstellung versuchen, bevore der rotor abstellt.



- GB Read Operating manual before use.  
 F Lisez Manual D'Opération avant l'utilisation.  
 D Vor der Benutzung, Betriebshandbuch lesen.



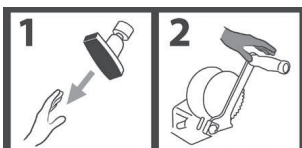
- GB Ear defenders must be worn.  
 F Défenseurs des oreilles doivent être portés.  
 D Gehörschutz getragen werden.



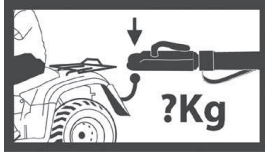
- GB Bystanders must be at least 20 metres from machine range of action.  
 F Des spectateurs doivent s'écarter au moins 20 mètres du rayon d'action de la machine.  
 D Umstehenden müssen sich mindestens 20 meter vom maschinenbetriebsraum entfernen.



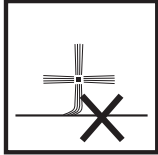
- GB Protective eyewear, footwear, gloves and ear protectors must be worn.  
 F Lunettes de protection, chaussures gants, protégés-oreilles doivent êtres portées.  
 D Schutzbrille, schuhe, handschuhe une Gerhörschutz getragen warden muss.



- GB Release hopper locating catch before operating winch.  
 F Trémie de sortie de localisation des captures avant de faire fonctionner le treuil.  
 D Release Trichter Ortung zu fangen, bevor die Winde in Betrieb.



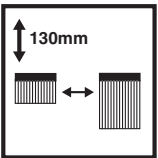
- GB It is the operators responsibility to ensure that the machine is compatible with the loading capacity of the towing vehicle.
- F Il est de la responsabilité des opérateurs afin de s'assurer que la machine est compatible avec la capacité de chargement du véhicule tracteur.
- D Es ist den Betreibern dafür zu sorgen, dass die Maschine mit der Belastbarkeit des Zugfahrzeugs ist.



- GB Damage to brushes if set too low.
- F Ne montez pas la brosse très bas.
- D Bürsten können beschädigt werden, wenn sie zu tief eingestellt sind.



- GB Always stop rotor before emptying hopper.
- F Arrêtez le rotor avant de vider la trémie.
- D Rotor muss vor Entleerung des Behälters zum Stillstand Kommen.



- GB Replace brushes when worn to 130mm of bristle.
- F Remplacez la brosse à 130mm de longueur de poil.
- D Die Bürsten sind zu wechseln, wenn die Borsten nur noch 130mm lang sind.



- GB Grease points
- F Les points de graissage
- D Grease Punkte.



- GB Never carry passengers on implements unless designed to do so.
- F Ne jamais transporter des passagers sur instruments sauf s'ils sont conçus pour le faire.
- D Niemals Passagiere implementiert, es sei denn ausgelegt, dies zu tun.

### READ THE FOLLOWING CAREFULLY.

### IMPORTANT SAFETY INSTRUCTIONS ON COUPLING IMPLEMENTS AND ATTACHMENTS TO ATV'S



#### TRAINING

- It is strongly advised that all operators of ATV's are trained by a certified training organization.

#### BODY PROTECTION

- Remember that when riding on an ATV the only form of protection that you have is what you wear. **ALWAYS** wear a helmet, eye protection and suitable robust clothing.
- Never operate an ATV or attachments while under the influence of alcohol or non-prescription drugs.
- Contact your doctor before operation of an ATV or attachments while under the influence of any prescription drugs.

#### ATV MANUAL

- Before coupling any implement to your ATV refer to your ATV handbook.

#### STABILITY

- When using equipment coupled to an ATV it is very important to remember that the handling characteristics of your ATV will change dramatically, whether the additional load is placed on the front or rear rack or trailed on the towing ball hitch.

#### WEIGHT CAPACITY

- Always ensure that the implement or attachment that you are coupling to the ATV is within the ATV's drawbar loading or weight carrying capacity. Refer to the ATV manufacturer's handbook to obtain information on the specific capacities.
- It is most important that you know the weight of your load, especially when on slopes or hillsides.
- As a guide, on level ground with an unbraked implement, the weight of the implement should be approximately no more than twice the un-laden weight of the ATV. This should be reduced on sloping, uneven or rough ground.

#### WEIGHT TRANSFER

- Always take great care when towing loads which may be subject to weight transfer e.g. liquids or livestock, especially on hillsides and slopes.
- Always restrict the movement of animals or rolling objects in a trailer.

### TOWING

- Never tow loads larger or heavier than recommended for your ATV. (See ATV hand book)
- Never tow or turn across a slope.
- Never tow down a steep slope with a large or heavy load.
- When towing heavy loads there is a significant risk of jack-knifing or overturning.

### ROUGH TERRAIN

- Always take care when operating implements on rough terrain or uneven ground.
- Take special care when operating on slippery surfaces especially hill sides or slopes.
- Take extra care when towing on hillsides, slopes or rough terrain.

### OPERATING ON ROADS

- Implements are not designed for travelling distances on roads but when crossing or going short road distances always travel slowly and do not exceed 20 KPH.
- Make sure that your equipment complies with Road vehicle lighting regulations.
- Ensure that you have the correct insurance cover and comply with all relevant laws.

### LOAD SECURITY

- Always secure your load firmly with ratchet straps.
- Make sure that your load is evenly distributed.
- Never stack a high load, high loads increase the risk of overturning.

### PASSENGERS

- Never carry passengers on any kind of implement or attachment, especially children.

### MAINTENANCE

- Service your ATV and attachments as per the manufacturer's handbook. Regular servicing of your ATV will ensure that it will steer, stop and handle to its best ability and your attachment will operate as safely and effectively as possible. Regular servicing helps ensure the longest possible working life for your equipment.

### EQUIPMENT SAFETY INSPECTION

- Check tyre pressure, incorrect tyre pressure can seriously affect the handling of your ATV. (See Operators handbook)
- Maintain your equipment regularly to keep it in safe working order.

### ROUTE/RISK ASSESSMENT

- Assess and plan the route that you intend to travel to avoid any type of hazards i.e. rocks, boulders, ditches, hidden fences or wire, pot holes, low hanging branches or any other type of hazard.
- Where possible stay with a routine route to avoid hazards.
- The risk may change in wet or wintery conditions, avoid slopes where possible.





Wessex Sweepers are guarded for your protection, but you must always observe certain elementary precautions. Sweepers are potentially **dangerous** machines and should be used with the greatest respect and **ALL OPERATORS MUST** read this manual and be aware of all safety precautions.

1. **NEVER** attempt any adjustment whatsoever, unless the machine is **COMPLETELY** at a standstill.
2. **NEVER** attempt to clear any obstructions around the mower unless the machine is **COMPLETELY** at a standstill.
3. **NEVER** remove belt guards unless the machine is **COMPLETELY** at a standstill.
4. **NEVER** remove safety guards which are provided for your protection.
5. **NEVER** operate the mower with people behind, keep everybody (especially children) at a safe distance, **minimum 20 metres**.
6. Stand well back from the machine when cutters are spinning.
7. Regularly inspect the **BRUSHES AND FIXING BOLTS** to ensure that they are in tip-top condition. Replace blades **IMMEDIATELY** if any signs of fracture or excess wear becomes apparent. Serious damage, which is excluded from our warranty conditions, may result from using your sweeper with an unbalanced rotor. When replacing brushes, always fit new mounting bolts and nuts to ensure that the rotor is balanced and running smoothly.

### HEALTH AND SAFETY - Noise at Work Regulations



In compliance with the above regulations, Ear Protectors must be worn when operating machinery.

#### READING AT THE OPERATORS EAR

**ATC/ATX Series Engine Driven Sweepers: 97.5 D.B.A.**

#### Note:

**Depending on conditions and material being swept, this may alter; it is therefore advisable for users to do their own assessment.**

## WARRANTY

---

Your Broadwood product or equipment is warranted free from defect in workmanship or manufacture for one year from date of purchase. Any parts which appear to us to be defective, either in material or workmanship shall be replaced or repaired at no cost to the purchaser, subject to the following conditions:

1. The registration card enclosed with this booklet must be returned to us within seven days of purchase.
2. Any failure in the machine should be reported in the first instance immediately to your dealer, who will act on your behalf to resolve the matter to your satisfaction.
3. The defective parts will be returned by your dealer to us, accompanied by a full statement describing the failure and the circumstances and conditions in which the failure occurred.
4. The following are specifically excluded from our terms of warranty:
  - a) Fair wear and tear, especially to belts, brushes, blades and spinners.
  - b) Damage to blades or brushes caused through incorrect positioning of the rotor (see instructions).
  - c) Damage caused by neglect or lack of lubrication.
  - d) Damage caused by misuse or abuse.
  - e) Damage caused whilst the machine is in transit.
  - f) Damage caused to the frame of the machine by running the machine with unbalanced rotors, blades or spinners.
  - g) Damage caused to the machine by use with loose nuts, bolts, screws or any other type of fittings.
5. The warranty is for the benefit of the first owner only.
6. Broadwood International decisions will be final and binding.

### **Note:**

**It is recommended that every machine is inspected after one hour of operation to check that all nuts, bolts, screws or any other types of fixings are tight and any loose fixings or components should be rectified as appropriate.**

**Further inspections should be carried out at regular intervals thereafter.**

## **COUPLING UP YOUR SELF-POWERED TRAILED VERSION**

---

- Reverse your ATV up to the Sweeper Collector, couple the ball hitch to the vehicle making sure that the ball hitch is locked on securely.
- Attach the throttle control lever to the frame of the ATV in an accessible position.

## **COUPLING UP YOUR TRACTOR PTO TRAILED VERSION**

---

- Reverse your tractor up to the Sweeper Collector, there are two options of hitches for the tractor version, ball hitch or ring hitch. Couple the desired hitch ensuring that it is either locked on or secured with a drawbar pin and lynch pin.
- Connect the P.T.O. shaft to the Sweeper Collector, the tractor end of the P.T.O. shaft is clearly marked on the P.T.O. Shaft cover. Take particular care to ensure that the P.T.O. Shaft is not too long, this can easily be shortened (see P.T.O. instructions on page 23 and 24)

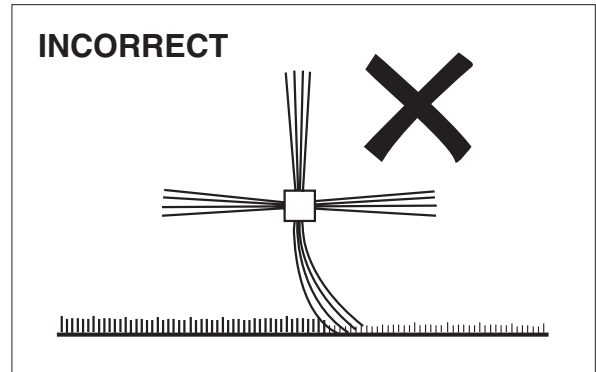
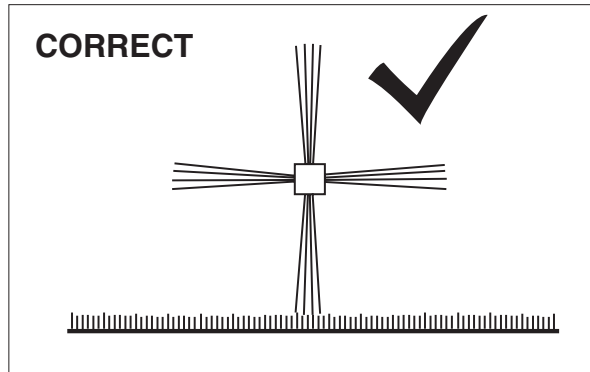
## **COUPLING UP YOUR 3-POINT LINKAGE TRACTOR VERSION**

---

- Reverse your Tractor up to the Sweeper Collector and connect the tractor lower link to the machine and secure with lynch pins. Ensure that the sweeper is level from side to side, this can be adjusted on the tractors link arms, then tighten the tractor check chains to avoid sideways movement.
- Connect the tractors top link to the machine. When the machine is on the ground the top link should be adjusted so that the top link strap is slack so that the machine will follow the ground contours.
- Connect the P.T.O. shaft to the Sweeper Collector, the tractor end of the P.T.O. shaft is clearly marked on the P.T.O. shaft cover. Take particular care to ensure that the P.T.O. shaft is not too long, this can easily be shortened (see P.T.O. instructions on pages 23 and 24).

## SETTING UP YOUR WESSEX SWEEPER COLLECTOR

To get the very best performance from the sweeper and long life from the brushes it is most important that you set the brushes up correctly. See diagram below, the brushes should be set so that they only just touch the surface that is being swept. Most of the collection is achieved by the wind from the brushes, if there is a drumming sound as the brushes rotate then the brushes are set too low to the ground and should be raised immediately to avoid damage to the brushes.



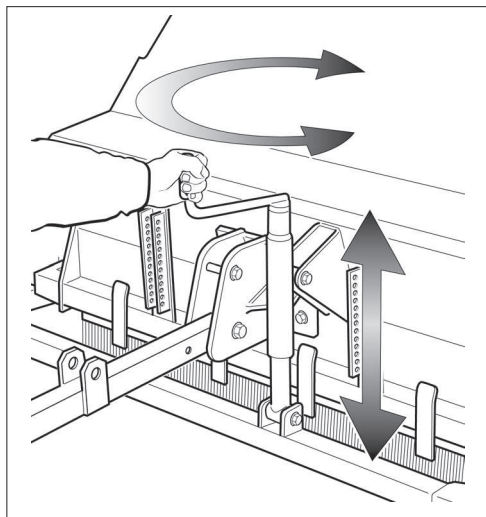
**THE BRUSHES ARE NOT DESIGNED FOR SCARIFYING OR THATCH REMOVAL, AND DAMAGE TO THE BRUSHES WILL QUICKLY OCCUR IF USED FOR THIS PURPOSE.**

When using the sweeper it is a good idea to start off with the brush rotor too high and lower it gently until a satisfactory result is achieved.

It is recommended that you keep the tractor revs to a minimum as excessive revs will blow dry leaves away rather than pick them up.

### ADJUSTING THE SWEEPING HEIGHT

Adjusting the sweeping height is achieved by simply turning the adjusting handle at the front of the machine (see drawing). Turn clockwise to raise the sweeping brush and anti-clockwise to lower the sweeping brush.



## COMPENSATING FOR BRUSH WEAR

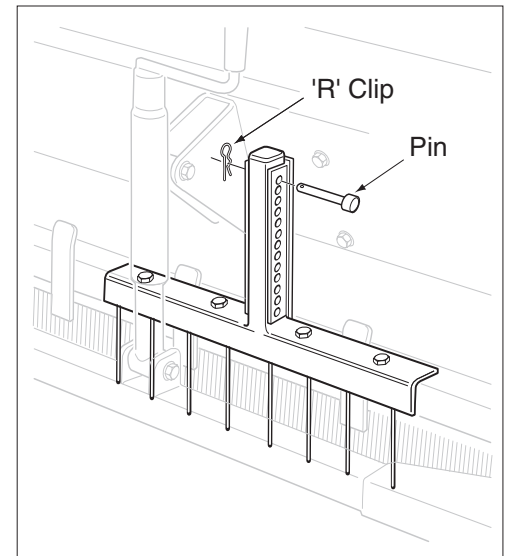
The bristles on your sweeper rotor will wear in due course, and it will be necessary to adjust the height accordingly.

The sweeper has been designed to work effectively until the bristles are approximately half their original length. When the bristles wear beyond this point there is insufficient momentum to throw the leaves and debris into the hopper and it will be necessary to replace the brushes on your machine. When worn down to 130mm of bristle you should replace the brushes.

## FRONT SPRING TINE OPTION (Paddock Cleaner only)

The front tines are fitted to the Paddock Cleaner option to assist collection of horse manure and similar material.

To adjust the tines simply remove the pin and R clip and slide the tine bar up or down to adjust (see drawing). Set the tines slightly below the brushes so that the tines loosen any compacted material and the brushes can easily collect the material.



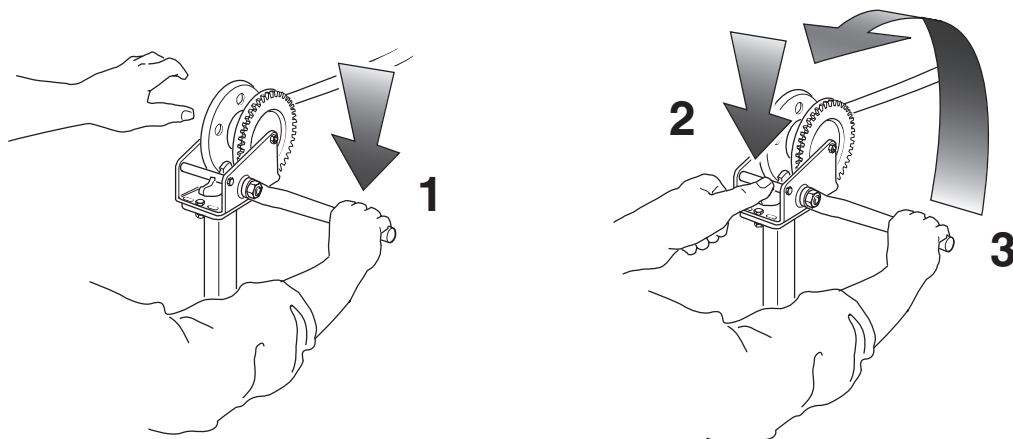
## EMPTYING THE HOPPER

Release hopper locking catch before operating the winch.

The hopper of the Wessex Sweeper tips forward towards the vehicle when using the hand winch.

**REMBEMBER, KEEP HOLD OF THE HANDLE WHEN CLOSING HOPPER.**

1. Grip handle.
2. While still holding handle, press to release ratchet.
3. While still holding handle, unwind to return hopper.



## MAINTENANCE

---

- **IMPORTANT!** Check that all fastening sets (bolts and nuts) are tight after the first hour of operation.

## BELT ADJUSTMENT

---

- The belts are tensioned in the factory but they will stretch after two or three hours work. It is important to check and retension after 3 hours work.
- To tighten the belts, remove the belt cover then adjust the belt tension by adjusting the jockey pulley adjuster. **NOTE: Correct belt tension is approximately 12-15mm of deflection under thumb pressure halfway between the pulleys.**
- If belts are cut, frayed or damaged in any way they should be replaced.
- Refit the belt cover and tighten the fixing nut.

## LUBRICATION

---

### **DAILY** (8-10 working hours)

- Grease Main Rotor bearings. (x2)
- Grease Wheel castors (x2)
- Grease Wheel bearings (x2)
- Oil height adjusting handle threads

### **Periodically** (50+ Hours)

- Grease hopper bearings (x2)
- Grease ball hitch and swivel

### **Engine Version**

- Check engine oil as recommended by manufacturer (see engine hand book).

### **PTO Version**

- Check gearbox oil periodically, top up with EP90 gear oil.
- Grease drive shaft universal joints periodically.
- Grease gear box cross shaft bearings

## TYRE PRESSURES

---

- FRONT: 28 psi / 1.9 bar
- REAR: 30 psi / 2.1 bar

## TROUBLESHOOTING

---

| FAULT                                      | CAUSE                                                                       | REMEDY                                                                         |
|--------------------------------------------|-----------------------------------------------------------------------------|--------------------------------------------------------------------------------|
| Not weeping cleanly                        | 1. Worn Brushes<br>2. Belts slipping<br>3. Brushes set too high             | 1. Replace Brushes<br>2. Adjust belt tension<br>3. Lower brushes to the ground |
| Blowing dry leaves away and not collecting | 1. Engine revs too high<br>2. Front brush worn or missing                   | 1. Reduce engine revs<br>2. Replace front brush bar                            |
| Drumming noise                             | 1. Brushes set too low                                                      | 1. Raise sweeping height                                                       |
| Vibration                                  | 1. Brushes set too low<br>2. Brushes loose on main rotor<br>3. Brush broken | 1. Raise sweeping height<br>2. Tighten up brushes<br>3. Replace brush          |

## SPECIFICATION

---

Engine: Honda 160KW (5.5 HP)  
Working Width: 1.2m  
Overall Width: 1.8m  
Overall Length: 2.75m  
Overall Height: 1.07m

Hopper Capacity: 0.7m<sup>3</sup> (approx.)  
Unladen Weight: 290kg  
Maximum Payload: 210kg

Maximum laden weight will vary depending on the type and weight of material being swept into the hopper.

**NEVER** exceed max. gross laden weight of 500kg when used behind an ATV.

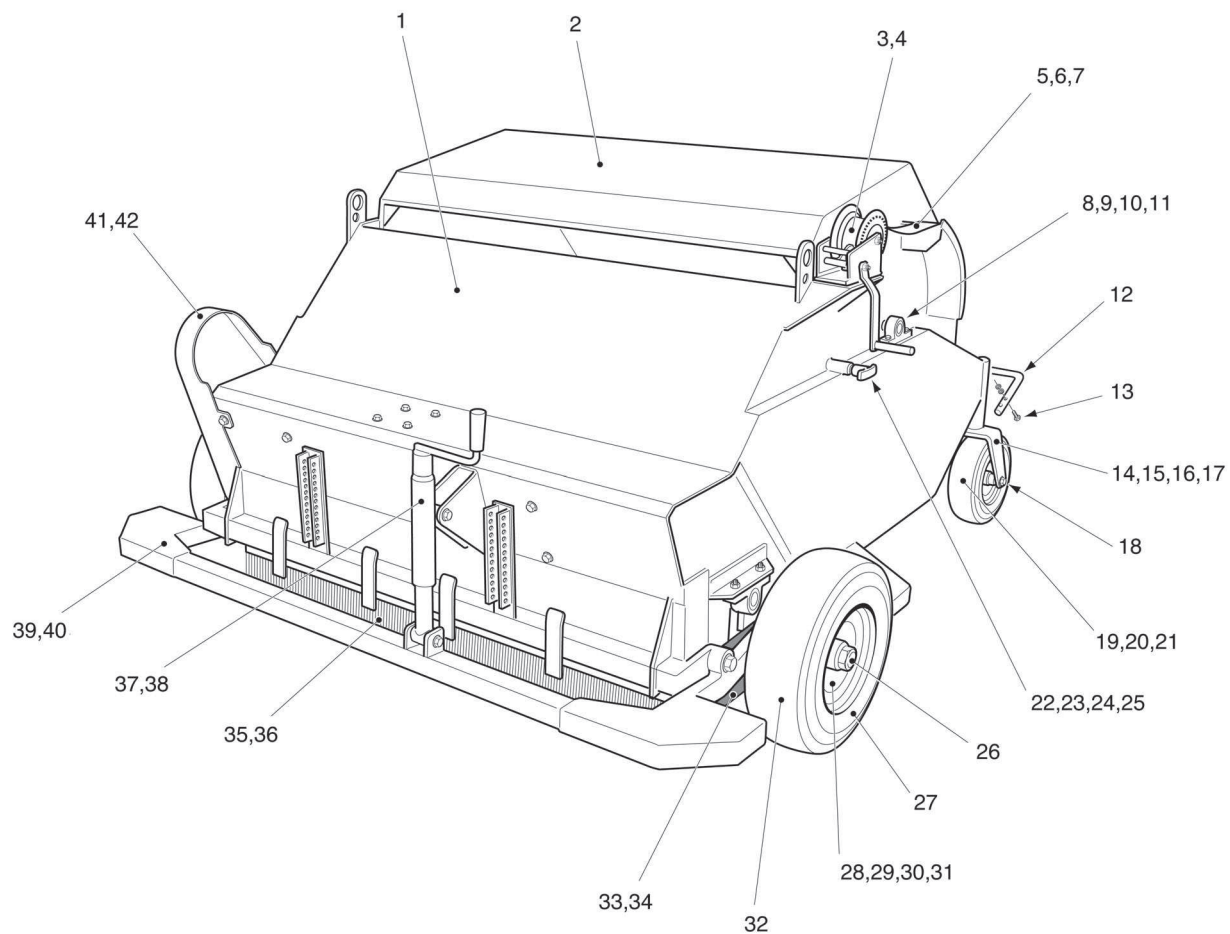


PLATE 1



**PARTS LIST MTC120 and MTX120 MAINFRAME ASSEMBLY - PLATE 1**

| <b>Item No.</b> | <b>Part No.</b> | <b>Description</b>      | <b>Qty. per Machine</b> |
|-----------------|-----------------|-------------------------|-------------------------|
| 1               | 13179           | Mainframe               | 1                       |
| 2               | 13279           | Hopper                  | 1                       |
| 3               | 3430            | Winch                   | 1                       |
| 4               | 9503            | Winch F/Set             | 1                       |
| 5               | 3530            | Winch Strap             | 1                       |
| 6               | 9603            | Winch Strap F/Set       | 1                       |
| 7               | 2820            | Support Tube            | 1                       |
| 8               | 2666            | Hopper Trunion          | 2                       |
| 9               | 9703            | Hopper Trunion F/Set    | 2                       |
| 10              | 0441            | Hopper Bearing          | 1                       |
| 11              | 26001           | Hopper Bearing F/Set    | 1                       |
| 12              | 9878            | Hopper Guard Rail       | 1                       |
| 13              | 9903            | Hopper Guard Rail F/Set | 1                       |
| 14              | 13451           | Wheel Fork              | 2                       |
| 15              | 1520            | Special Washer          | 2                       |
| 16              | 6303            | Wheel Fork F/Set        | 2                       |
| 17              | 0246            | Grease Nipple           | 2                       |
| 18              | 6003            | Wheel F/Set             | 2                       |
| 19              | 1552C           | Tyre                    | 2                       |
| 20              | 1552B           | Inner Tube              | 2                       |
| 21              | 1552            | Wheel - Complete        | 2                       |
| 22              | 1626            | Tee Knob                | 1                       |
| 23              | 1726            | Shoot Bolt              | 1                       |
| 24              | 3625            | Spring                  | 1                       |
| 25              | 3722            | Roll Pin                | 1                       |
| 26              | 4951            | Hub Cap                 | 2                       |
| 27              | 1352            | Wheel - Complete        | 2                       |
| 28              | 1538            | Wheel Bearing - Inner   | 2                       |
| 29              | 1638            | Wheel Bearing - Outer   | 2                       |
| 30              | 0645            | Oil Seal                | 2                       |
| 31              | B5551           | Inner Tube              | 2                       |
| 32              | B5351           | Tyre                    | 2                       |
| 33              | 10078           | Skirt                   | 2                       |
| 34              | 10203           | Skirt F/Set             | 2                       |
| 35              | 1676            | Front Brush             | 1                       |
| 36              | 10703           | Front Brush F/Set       | 1                       |
| 37              | 13380           | Height Adjuster         | 1                       |
| 38              | 0503            | Height Adjuster F/Set   | 1                       |
| 39              | 21880           | Front Wheel Mount       | 1                       |
| 40              | 26101           | Front Wheel Mount F/Set | 1                       |
| 41              | 13277           | Belt Guard              | 1                       |
| 42              | 26201           | Belt Guard F/Set        | 1                       |

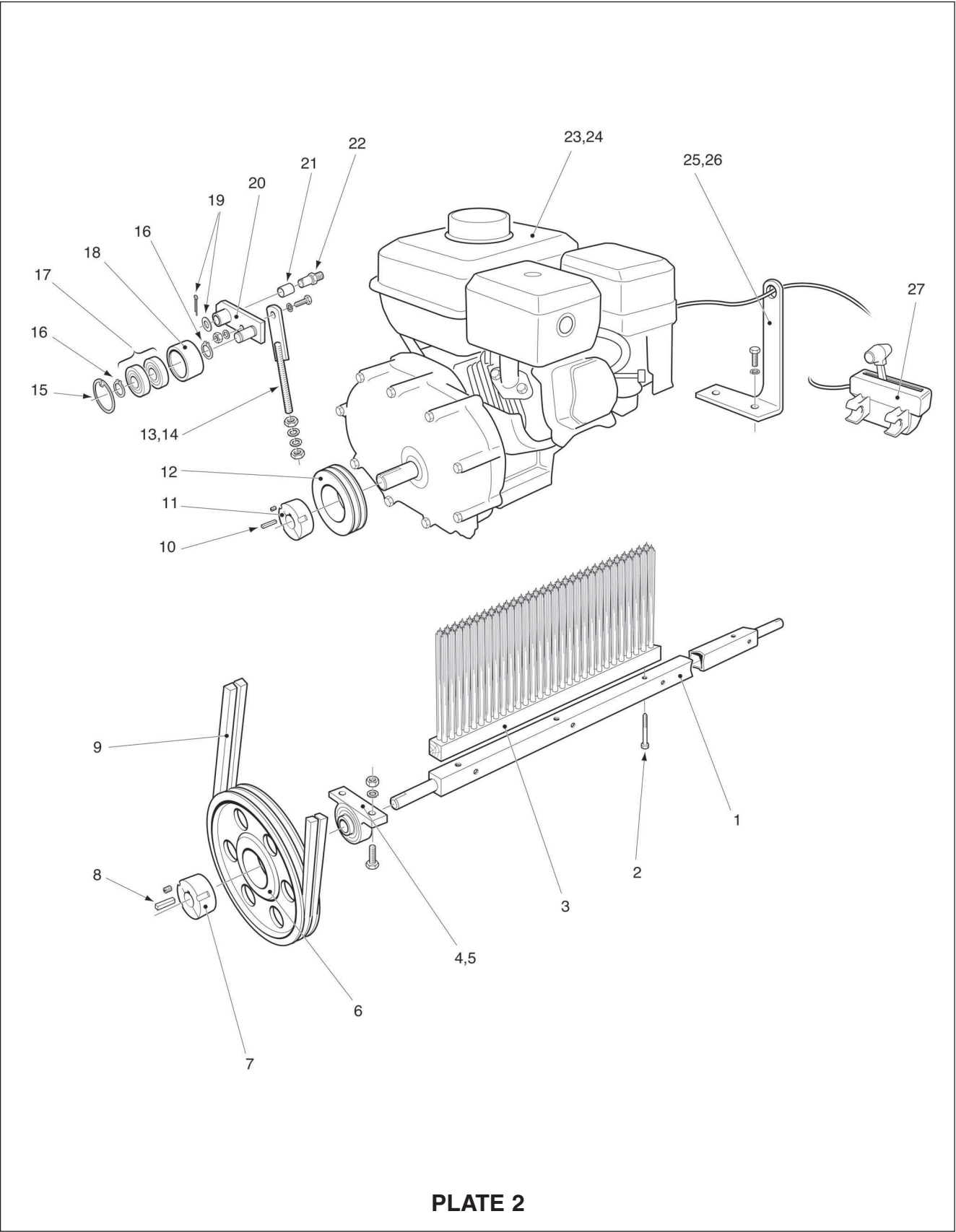
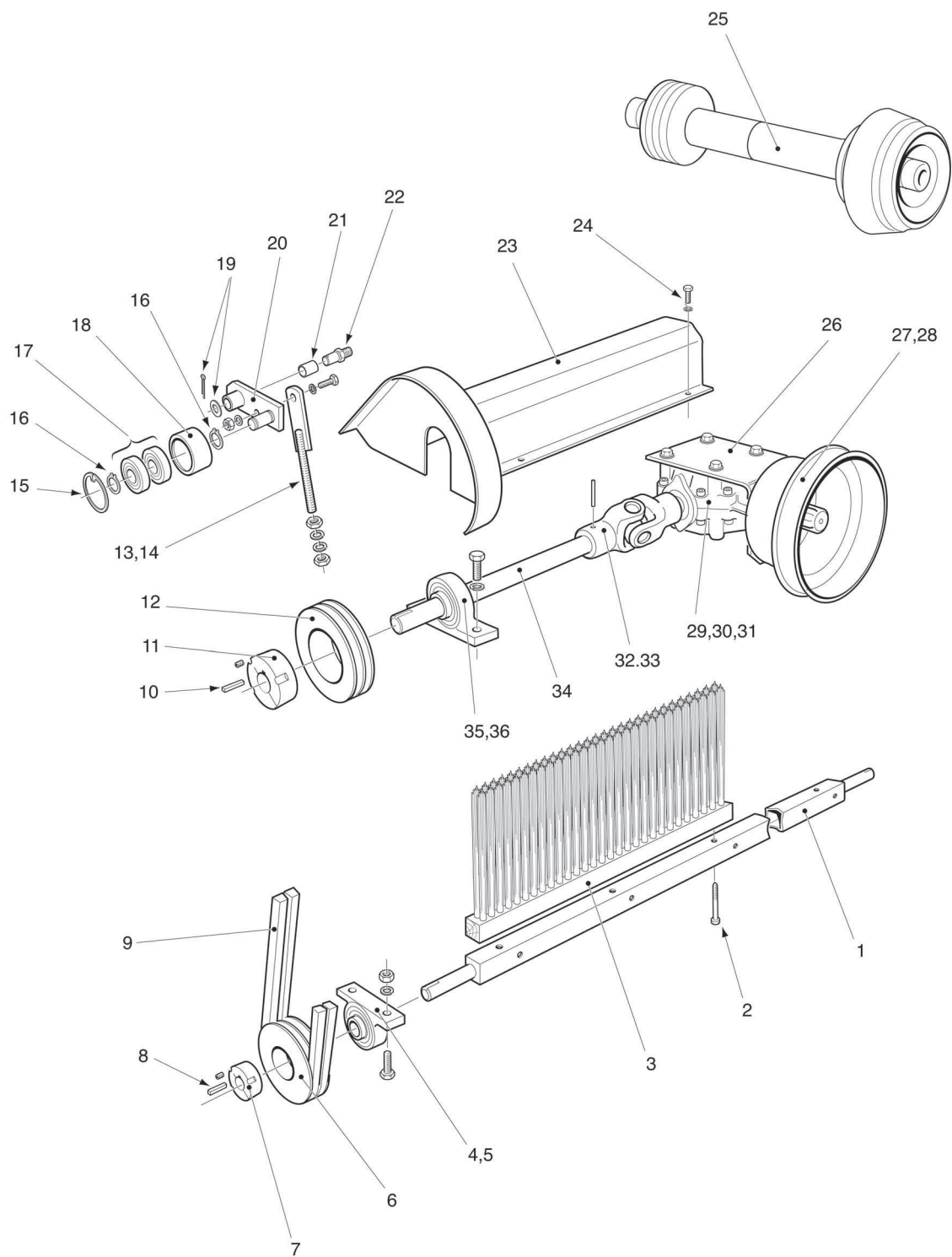


PLATE 2

| Item No. | Part No. | Description                   | Qty. per Machine |
|----------|----------|-------------------------------|------------------|
| 1        | 11066    | Brush Rotor                   | 1                |
| 2        | 5001     | Brush Strip F/Set             | 4                |
| 3        | 7570     | Brush Strip - Paddock Sweeper | 8                |
| 3        | 2870     | Brush Strip - Leaf Sweeper    | 8                |
| 4        | 0341     | Rotor Bearing                 | 2                |
| 5        | 10803    | Rotor Bearing F/Set           | 2                |
| 6        | 6462     | Pulley                        | 1                |
| 7        | 6562     | Taper Lock                    | 1                |
| 8        | 0147     | Key                           | 1                |
| 9        | 3634     | Drive Belt                    | 2                |
| 10       | 1847     | Key (Stepped)                 | 1                |
| 11       | 6562     | Taper Lock                    | 1                |
| 12       | 6262     | Pulley                        | 1                |
| 13       | 22480    | Adjuster                      | 1                |
| 14       | 30901    | Adjuster F/Set                | 1                |
| 15       | 0722     | Circlip                       | 1                |
| 16       | 0622     | Circlip                       | 2                |
| 17       | 1438     | Jockey Bearing                | 2                |
| 18       | 1862     | Jockey Pulley                 | 1                |
| 19       | 0715     | Jockey Bracket F/Set          | 1                |
| 20       | 2466     | Jockey Bracket                | 1                |
| 21       | 1738     | Bush                          | 1                |
| 22       | 2566     | Pivot                         | 1                |
| 23       | 1560     | Engine (Honda)                | 1                |
| 24       | 26401    | Engine F/Set                  | 1                |
| 25       | 22380    | Throttle Cable Support        | 1                |
| 26       | 30601    | Cable Support F/Set           | 1                |
| 27       | 6756     | Throttle Assembly             | 1                |



**PLATE 3**

| Item No. | Part No. | Description                   | Qty. per Machine |
|----------|----------|-------------------------------|------------------|
| 1        | 11066    | Brush Rotor                   | 1                |
| 2        | 5001     | Brush Strip F/Set             | 4                |
| 3        | 7570     | Brush Strip - Paddock Sweeper | 8                |
| 3        | 2870     | Brush Strip - Leaf Sweeper    | 8                |
| 4        | 0441     | Rotor Bearing                 | 2                |
| 5        | 10803    | Rotor Bearing F/Set           | 2                |
| 6        | 12162    | Pulley                        | 1                |
| 7        | 8762     | Taper Lock                    | 1                |
| 8        | 0147     | Key                           | 1                |
| 9        | 3634     | Drive Belt                    | 2                |
| 10       | 0147     | Key                           | 1                |
| 11       | 8762     | Taper Lock                    | 1                |
| 12       | 12162    | Pulley                        | 1                |
| 13       | 22480    | Adjuster                      | 1                |
| 14       | 30901    | Adjuster F/Set                | 1                |
| 15       | 0722     | Circlip                       | 1                |
| 16       | 0622     | Circlip                       | 2                |
| 17       | 1438     | Jockey Bearing                | 2                |
| 18       | 1862     | Jockey Pulley                 | 1                |
| 19       | 0715     | Jockey Bracket F/Set          | 1                |
| 20       | 2466     | Jockey Bracket                | 1                |
| 21       | 1738     | Bush                          | 1                |
| 22       | 2566     | Pivot                         | 1                |
| 23       | 14777    | Guard                         | 1                |
| 24       | 26201    | Guard F/Set                   | 1                |
| 25       | 3781     | PTO Shaft                     | 1                |
| 26       | 5377     | Gearbox Bracket               | 1                |
| 27       | 5177     | PTO Guard                     | 1                |
| 28       | 31101    | PTO Guard F/Set               | 1                |
| 29       | 2457     | Gearbox                       | 1                |
| 30       | 31201    | Gearbox F/Set                 | 1                |
| 31       | 2557     | Elbow                         | 1                |
| 32       | 2581     | Drive Shaft Knuckle           | 1                |
| 33       | 1222     | Roll Pin                      | 1                |
| 34       | 16066    | Drive Shaft                   | 1                |
| 35       | 0441     | Bearing                       | 1                |
| 36       | 31001    | Bearing F/Set                 | 1                |

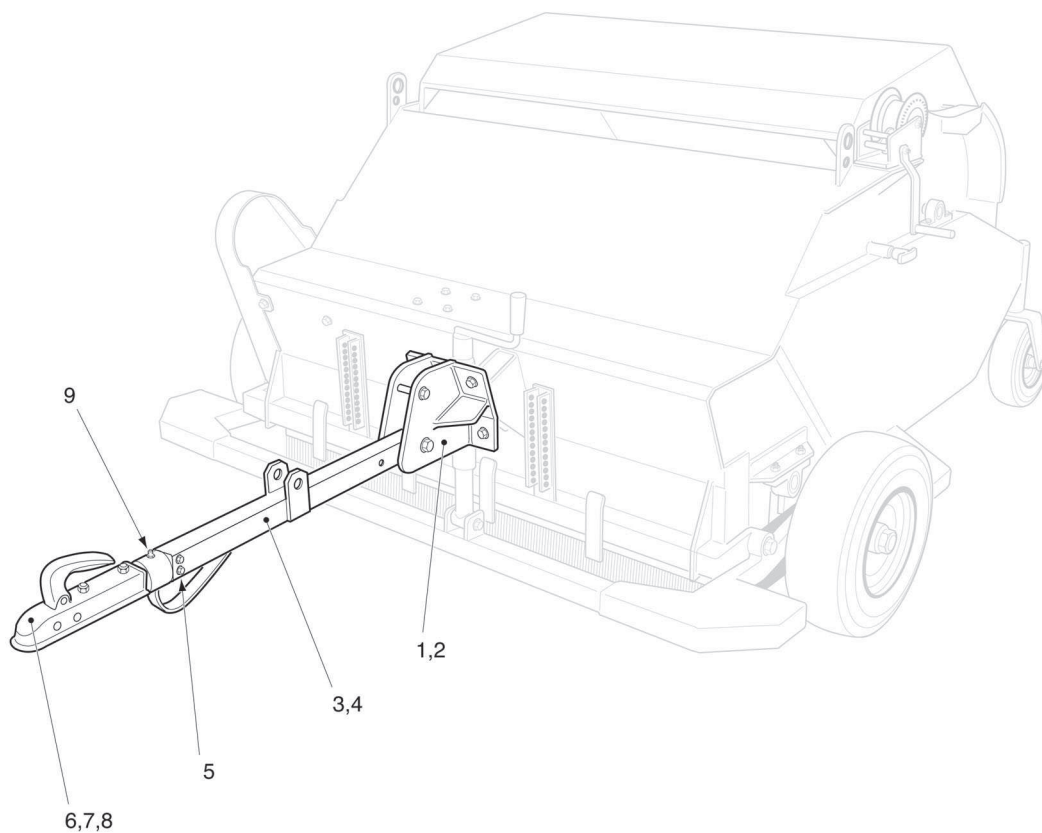


PLATE 4

## PARTS LIST MTC120 and MTX120 - DRAWBAR ASSEMBLY - P

LATE 4

| Item No. | Part No. | Description          | Qty. per Machine |
|----------|----------|----------------------|------------------|
| 1        | 21680    | Drawbar Bracket      | 1                |
| 2        | 33901    | Drawbar Brcket F/Set | 1                |
| 3        | 18280    | Drawbar              | 1                |
| 4        | 18001    | Drawbar F/Set        | 1                |
| 5        | 1403     | Swivel F/Set         | 1                |
| 6        | 2356     | Tow Hitch            | 1                |
| 7        | 1503     | Tow Hitch F/Set      | 1                |
| 8        | 12156    | Tow Hitch Swivel     | 1                |
| 9        | 0246     | Grease Nipple        | 1                |

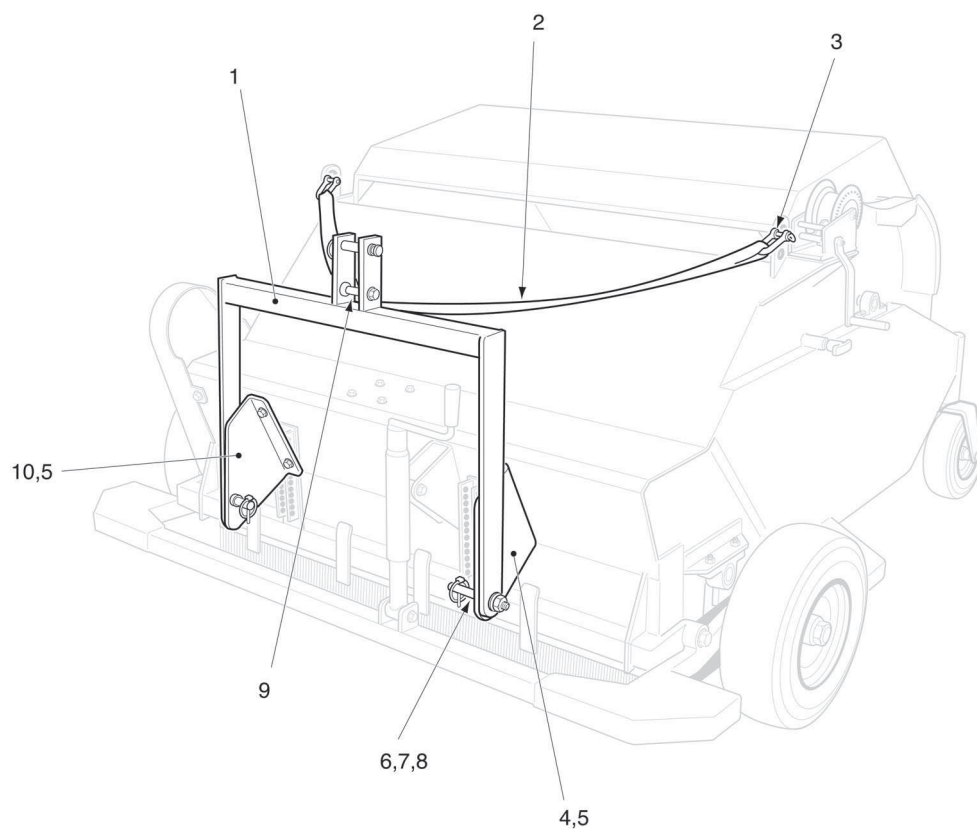


PLATE 5

PARTS LIST MTC120 and MTX120 - THREE POINT LINKAGE

ASSEMBLY - PLATE 5

| Item No. | Part No. | Description               | Qty. per Machine |
|----------|----------|---------------------------|------------------|
| 1        | 21480    | Top Link Bracket          | 1                |
| 2        | 7630     | Strap                     | 1                |
| 3        | 0629     | 'D' Shackle               | 2                |
| 4        | 21780    | Bottom Link Bracket R/H   | 1                |
| 5        | 31001    | Bottom Link Bracket F/Set | 2                |
| 6        | 0226     | Link Pin                  | 2                |
| 7        | 7066     | Bush                      | 2                |
| 8        | 0227     | Lynch Pin                 | 2                |
| 9        | 0129     | 'D' Shackle               | 1                |
| 10       | 21780    | Bottom Link Bracket L/H   | 1                |

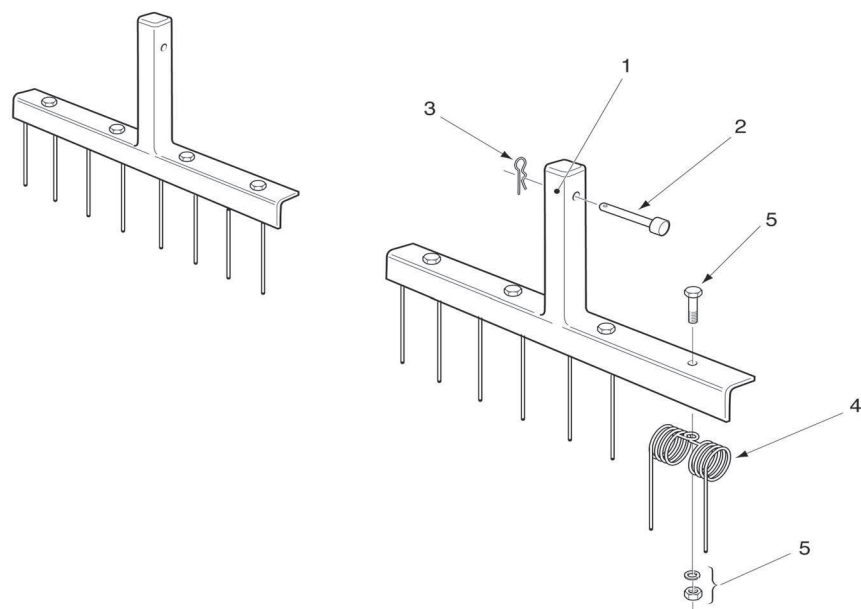


PLATE 6

PARTS LIST MTC120 and MTX120 - SPRING TINE ASSEMBLY - PLATE 6

| Item No. | Part No. | Description   | Qty. per Machine |
|----------|----------|---------------|------------------|
| 1        | 7258     | Tine Bar      | 2                |
| 2        | 1128     | Retaining Pin | 2                |
| 3        | 0121     | 'R' Clip      | 2                |
| 4        | 3125     | Tine          | 8                |
| 5        | 11303    | Tine F/Set    | 8                |



### IMPORTANT!

**PTO drive shafts must only be used for their intended purpose.**

PTO drive shafts are designed for specific machine types and power requirements.

They must not be replaced by other models.

Ensure that the PTO drive shaft is securely connected.

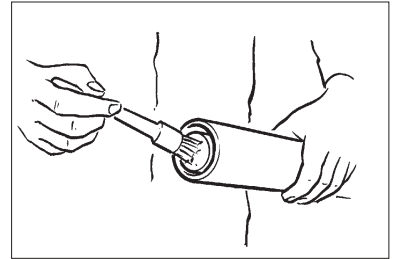
**Only use a completely protected drive system:**

PTO drive shaft with complete guard and complementary guard on tractor and implement. A complete guard is essential in all working positions.

## LUBRICATION

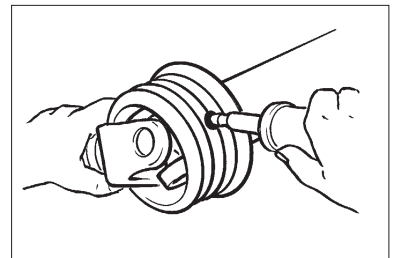
---

Lubricate with quality grease before starting work and every 8 operating hours.



Clean and grease the PTO drive shaft before each prolonged period of non-use.

Grease the guard tubes in winter to prevent freezing.



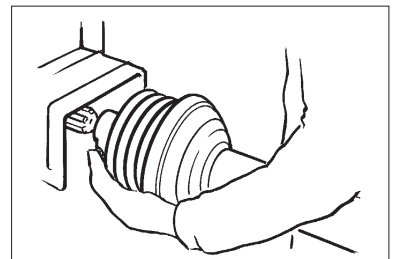
## COUPLING THE PTO SHAFT

---

Clean and grease the PTO and PIC

### **Q.-d pin**

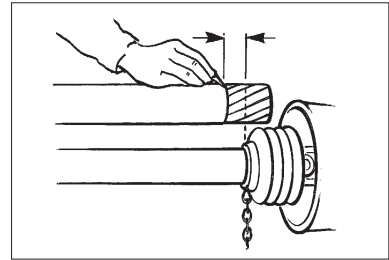
Press q.-d. pin and simultaneously push PTO drive shaft onto PTO until pin engages.



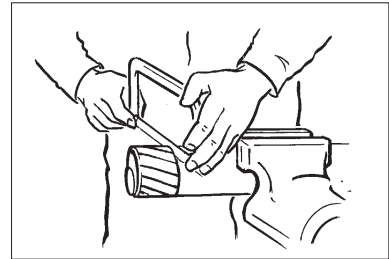
### LENGTH ADJUSTMENT

---

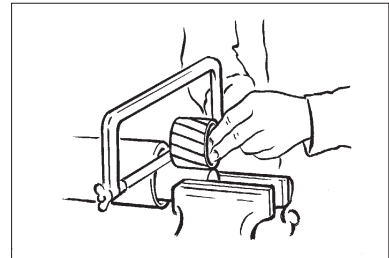
To adjust the length, hold the half-shafts next to each other in the shortest working position and mark them.



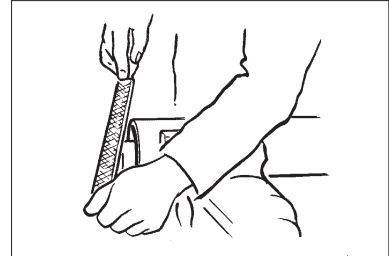
Shorten inner and outer guard tubes equally.



Shorten inner and outer sliding profiles by the same length as the guard tubes.



Round off all sharp edges and remove burrs.  
Grease sliding profiles.

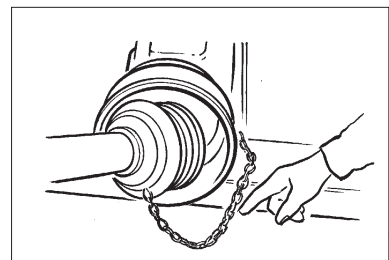


No other changes may be made to the PTO drive shaft and guard

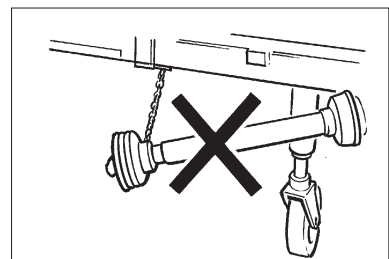
### CHAINS

---

Chains must be fitted so as to allow sufficient articulation of the shaft in all working positions.



The PTO drive shaft must not be suspended from the chains!





## *Certificate of CE Conformity*

**Machine Model:**

**MTX120, MTX120 & Dung Beetle Range**

**Description:**

**Sweeper Collector**

*I hereby certify that the machine detailed hereon  
conforms to:*

**European Directives 2008/42/EC  
Supply of Machinery Regulations 2008  
As amended 91/368EEC – 93/44EEC – 93/68EEC**

**Signed:**

.....  
Quality Manager

**Date:**

**24.11.2010**

### **Wessex International**

Charlton House, Caxton Place, East Portway Industrial Estate, Andover, Hampshire SP10 3QN  
Telephone: 01264 345870 Fax: 01264 345 880

**[www.wessexintl.com](http://www.wessexintl.com)**



**Wessex International**  
**Charlton House, Caxton Close, East Portway Industrial Estate, Andover Hampshire. SP10 3QN**  
**Telephone: 01264 345870 Fax 01264 345880**  
**e-mail: [sales@wessexintl.com](mailto:sales@wessexintl.com)**

**[www.wessexintl.com](http://www.wessexintl.com)**

---