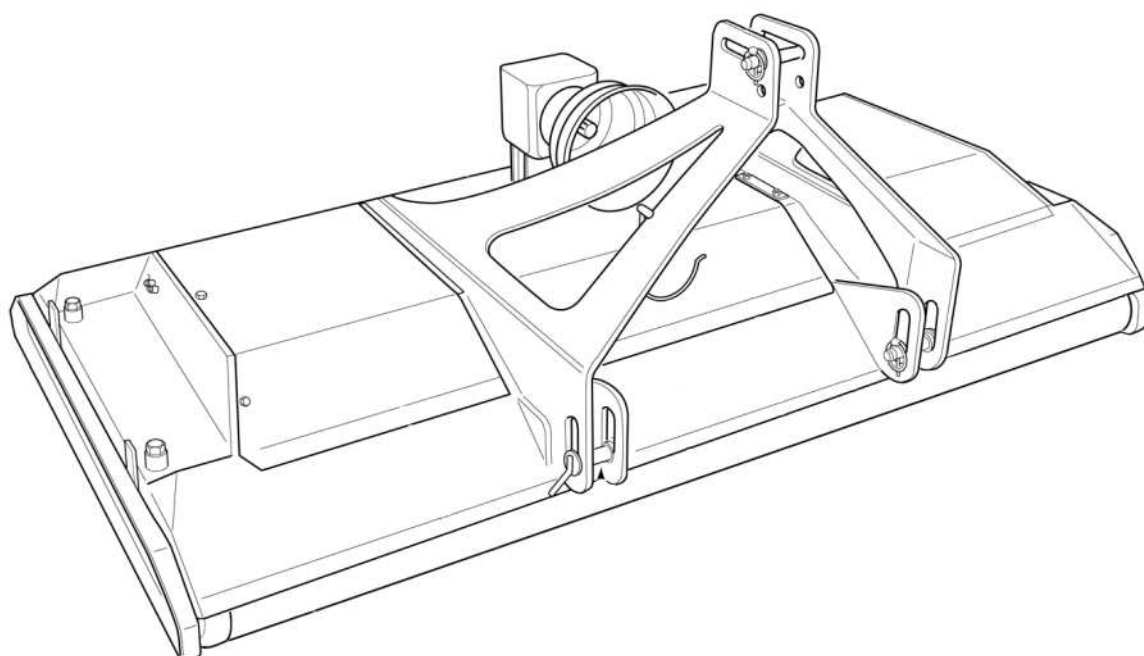


Operation Manual and Parts Book

Wessex RMX180/240/300 Roller Mowers



Product Code: L2025

CONTENTS

Welcome to your new Wessex Product	2
Safety Decals	3, 4
Important Safety Warnings	5
Warranty	6
Linking up to the Tractor	7
Using the Mower	7
Altering the Cutting Height / Maintenance	8
Lubrication / Belt Adjustment	9
Troubleshooting / Winter Storage	10
Cutting Blades / Specifications	11
Parts Illustration - RMX 180 / 240 / 300 - Mainframe Assembly	12
Parts List - RMX 180 / 240 / 300 - Mainframe Assembly	13
Parts Illustration / Parts List - RMX Rollers	14
Parts Illustration / Parts List - Drive Belts RMX180	15
Parts Illustration / Parts List - Drive Belts RMX240	16
Parts Illustration / Parts List - Drive Belts RMX300	17
Parts Illustration - RMX 180 / 240 / 300 - Spindles Assembly	18
Parts List - RMX 180 / 240 / 300 - Spindles Assembly	19
PTO Shaft - Operation and Maintenance	20, 21
Safety Training Induction	22
Daily Inspection Record	23
Notes	24
CE Certificate	25

WELCOME TO YOUR NEW WESSEX PRODUCT

Thank you for purchasing a Wessex product. As a Wessex customer, you now number among the most important people of our business and we will endeavour to give you the best service available through our dealer network.

Please read this Manual carefully and familiarise yourself and other persons that will be using the machine with its contents, to ensure the optimum performance and working life of your machine. It is advisable that a copy of this Manual is kept in the workshop and one copy with the machine. Further copies are available through your dealer.

On delivery, your dealer should go through the workings of the machine with you, explaining the setting up procedures, all of which are contained in this manual for further reference. The Warranty Registration Form must also be completed and returned to us **within 7 days of delivery** in order to validate the Warranty.

**PLEASE READ THE FOLLOWING PAGES CAREFULLY BEFORE USING YOUR MACHINE
AND KEEP THIS MANUAL IN A SAFE PLACE.**

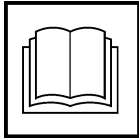


**THIS SAFETY SYMBOL IS TO ALERT OPERATORS OF A HAZARD
THAT MAY RESULT IN INJURY.
ALWAYS FOLLOW INSTRUCTIONS CAREFULLY**

SAFETY DECALS



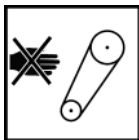
- GB **ATTENTION** Description of pictograms.
 F **ATTENTION** Description des pictogrammes.
 D **VORSICH** Beschreibung der Piktogramme.



- GB Read Operating manual before use.
 F Lisez Manual D'Opération avant l'utilisation.
 D Vor der Benutzung, Betriebshandbuch lesen.



- GB Ear defenders must be worn.
 F Défenseurs des oreilles doivent être portés.
 D Gehörschutz getragen werden.



- GB Never remove guards or attempt adjustment until rotor has stopped.
 F Ne retirez jamais les gardes ou d'ajustement tentative jusqu'à ce que toutes les pièces mobiles ont été interrompus.
 D Schutzvorrichtung niemals abnehmen oder einstellung versuchen, bevor der rotor abstellt.



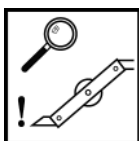
- GB Bystanders must be at least 20 metres from machine range of action.
 F Des spectateurs doivent s'écarter au moins 20 mètres du rayon d'action de la machine.
 D Umstehenden müssen sich mindestens 20 meter vom maschinenbetriebsraum entfernen.



- GB Stand clear. Flying objects possible.
 F S'écarter! Possibilité d'objets volants.
 D Zurückbleiben! Herumfliegende Objekte möglich



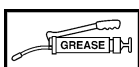
- GB Lift Machine before turning
 F Levez la machine avant de la tourner
 D Maschine aufheben, bevor man sie umdreht.



- GB Examine blades regularly. The operator is responsible for machine damage caused by unbalanced rotors.
 F Examinez des lames régulièrement. L'opérateur est responsable des dommages à la machine provoqués par des rotors mal équilibrés
 D Klingen regelmäßig kontrollieren. Der Arbeiter ist an den durch unausgewogenen Rotoren maschinenschäden verantwortlich.



- GB Keep hands and feet clear
 F Garder les mains et les pieds.
 D Halten Sie Ihre Hände und Füße.

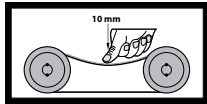


- GB Grease points
 F Les points de graissage
 D Grease Punkte.

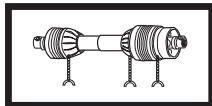
SAFETY DECALS



- GB Lifting Point
F Point de levage
D Anschlagpunkt



- GB CORRECT BELT TENSION: Check belt tension regularly:
10mm of belt deflection at thumb pressure between pulleys.
F TENSIONNEMENT CORRECT DE LA COURROIE : Contrôler le tensionnement régulièrement :
la déflexion de la courroie sous la pression du pouce entre les deux poulies doit être de 10 mm.
D KORREKTE RIEMENSPANNUNG: Riemen Spannung regelmäßig überprüfen:
10 mm Eindrücktiefe bei Daumendruck zwischen Riemenscheiben.



- GB Safety Chains must be anchored tightly. Never allow chains to wrap round PTO shaft. Grease PTO shaft regularly.
F Chaînes de sécurité doit être ancré solidement. Ne laissez jamais les chaînes à entourer le transmission. Régulièrement graisse le transmission.
D Sicherheitsketten müssen fest verankert sein. Lassen Sie niemals Ketten zu runden Zapfwelle zu wickeln. Fett Gelenkwelle regelmäßig.

IMPORTANT NOTICE

FITTING PTO SHAFT TO MACHINE & TRACTOR

- All safety chains must be anchored tight enough to allow a small amount of movement, but not enough to wrap around the P.T.O. Shaft.
- Ensure that the shaft and guard is regularly greased to avoid overheating and to give lubrication.
- **Important:** Thoroughly read through the manufacturers instruction book before using the P.T.O. Shaft.

P.T.O.Shafts are not covered by the Wessex Warranty.

IMPORTANT SAFETY WARNINGS



Wessex machines are guarded for your protection, but you must always observe certain elementary precautions. Machines are potentially **dangerous** and should be used with the greatest respect and **ALL OPERATORS MUST** read this manual and be aware of all safety precautions.

1. **NEVER** attempt any adjustment whatsoever, unless the machine is **COMPLETELY** at a standstill and the P.T.O. drive and blades have stopped turning.
2. **NEVER** attempt to clear any obstructions around the mower unless the machine is **COMPLETELY** at a standstill and the P.T.O. drive and blades have been stopped.
3. **NEVER** remove belt guards unless the machine is **COMPLETELY** at a standstill.
4. **NEVER** remove safety guards which are provided for your protection.
5. **NEVER** operate the mower with people around, keep everybody (especially children and animals) at a safe distance, **minimum 20 metres**.
6. Stand well back from the machine when cutters are spinning.
7. Regularly inspect the **BLADES AND FIXING BOLTS** to ensure that they are in excellent condition. Replace blades **IMMEDIATELY** if any signs of fracture or excess wear becomes apparent. Serious damage, which is excluded from our warranty conditions, may result from using your mower with an unbalanced rotor. When replacing blades, always fit new mounting bolts and nuts to ensure that the rotor is balanced and running smoothly.

HEALTH AND SAFETY - Noise at Work Regulations

READING AT THE OPERATORS EAR

Wessex RMX Roller mower: Approximately 95 D.B.A

Depending on conditions and material being cut, this reading may alter, it is therefore advisable for users to do their own assessment.



In compliance with the above regulations, Ear Protectors must be worn when operating machinery.

WARRANTY

Your Wessex product or equipment is warranted free from defect in workmanship or manufacture for one year from date of purchase. Any parts which appear to us to be defective, either in material or workmanship shall be replaced or repaired at no cost to the purchaser, subject to the following conditions:

1. The registration card enclosed with this booklet must be returned to us within seven days of purchase. Alternatively if you prefer, you may register your product via our Website.
<http://www.wessexintl.com/warranty-registration>
2. Any failure in the machine should be reported in the first instance immediately to your dealer, who will act on your behalf to resolve the matter to your satisfaction.
3. The defective parts will be returned by your dealer to us, accompanied by a full statement describing the failure and the circumstances and conditions in which the failure occurred.
4. The following are specifically excluded from our terms of warranty:
 - a) Fair wear and tear, especially to belts, brushes, blades and bearings.
 - b) Damage caused through incorrect adjustment (see instructions).
 - c) Damage caused by neglect or lack of lubrication.
 - d) Damage caused by misuse or abuse, including impact damage to blades.
 - e) Damage caused whilst the machine is in transit.
 - f) Damage caused to the frame of the machine by running the machine with unbalanced rotors, blades or spinners.
 - g) Damage caused to the machine by use with loose nuts, bolts, screws or any other type of fittings.
5. The warranty is for the benefit of the first user only.
6. Wessex International decisions will be final and binding.

Note:

It is recommended that every machine is inspected after one hour of operation to check that all nuts, bolts, screws or any other types of fixings are tight and any loose fixings or components should be rectified as appropriate.

Further inspections should be carried out at regular intervals thereafter.

LINKING UP TO THE TRACTOR

1. Reverse your tractor up to the machine and connect the lower links, left hand first to the link pins on the machine, securing with lynchpins. Adjust the right hand tractor lift arm to ensure that the mower is level from side to side.
2. Connect the top link. The top link pin must be situated in the hole for transport, but in the slot when mowing as this will allow the machine to follow the ground contours well.
3. Connect the P.T.O. shaft ensuring that the shaft is not too long for the tractor. If necessary, the P.T.O. shaft may need to be shortened, (see instructions on pages 20 and 21). Always hook the P.T.O. chains onto the lugs provided and shorten the chains to suit. The P.T.O. chains must not encircle the P.T.O. guard, as this will cause premature P.T.O. guard damage and wear.
4. Tighten tractor check chains to prevent sideways movement of the mower.
5. **Ensure that the top link pin is in the centre of the slot on level ground for mowing and in the hole for transport.**

USING THE MOWER

Having linked your RMX mower up to the tractor and connected up the P.T.O. shaft, ensure that the mower is not too heavy for the tractor, if so you may need to fit front weights to the tractor.

Ensure that there are no bystanders within 20 metres before starting the mower up.

Never use the mower in P.T.O. speeds in excess of 540 R.P.M.

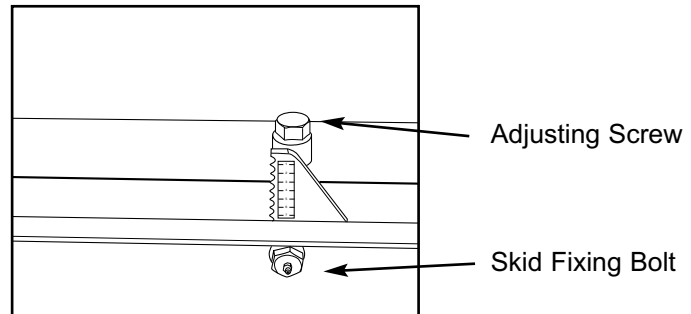
Ensure that there are no objects underneath the mower deck and that there are no bystanders within 20 metres around the mower before starting the mower up especially children and animals.

Having set the RMX mower up in accordance with the above instructions engage the P.T.O. and select a low forward speed and gently move forward. You will establish the optimum forward speed for your conditions by experience, but on regularly maintained grass you will achieve a good finish at 5-6 M.P.H.

When mowing always put the top link pin in the slot so that the mower will follow the ground contours well, and always put the pin into the hole for road transport.

ALTERING THE CUTTING HEIGHT

1. Lift the mower slightly off the ground on the hydraulic linkage and switch off the tractor.
2. Loosen, but do not remove the skid fixing bolts. There are two each side of the main deck.
3. Turn the adjusting screws anticlockwise to lower the rollers, thus increasing the cutting height, or clockwise to raise the rollers, thus reducing the height of cut. Ensure that all screws are adjusted by the same amount otherwise the cut will be uneven. There is a line of increments on the skid to assist in checking for even adjustment.
4. Tighten all skid fixing bolts.
5. Re-adjust the top link so that then the machine is on level ground the pin is in the centre of the slot.



MAINTENANCE

To keep your RMX Roller Mower in excellent working condition we recommend that you follow this maintenance programme:-

REGULARLY:-

- Lubricate your RMX as indicated in this manual.
- Check all drive belts for tension and replace if cut, frayed or worn.
- Inspect all blades regularly and replace any that are badly worn, chipped or broken.
- DO NOT RUN MACHINE WITH UNBALANCED ROTORS THIS WILL CAUSE DAMAGE (NOT COVERED BY WARRANTY).
- Inspect front and rear rollers and scraper wires.
- Regularly clean cut grass from under belt covers.

At the end of the grass cutting season always clean the RMX thoroughly and grease before winter storage.

Only use genuine Wessex parts in the event of replacing worn parts. This will ensure the continued safe use of your RMX Roller Mower and the validity of your warranty.

LUBRICATION

DAILY:-

- Grease Roller bearings.
- Inspect Blades

WEEKLY:-

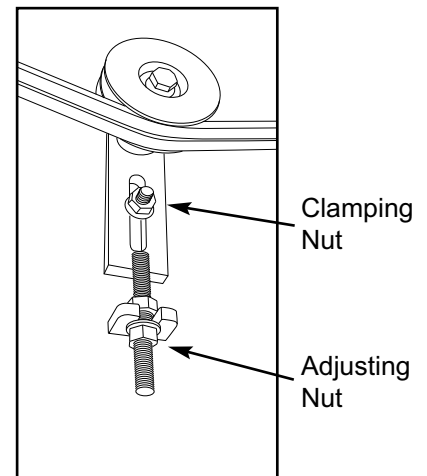
- Grease height adjustment points.
- Check Gearbox oil level.
- Lubricate all adjusting threads.
- Grease Cutter Spindle bearings.
- Grease P.T.O. Shaft bearings.
- Grease P.T.O. Tube slides.

BELT ADJUSTMENT

The drive belts are tensioned by adjusting the jockey pulleys. These are accessed by removing the belt guards. Loosen the locking nut (24mm spanner) securing the belt tensioner to the main frame and turn the adjuster nut clockwise to tighten or anti-clockwise to slacken the belts.

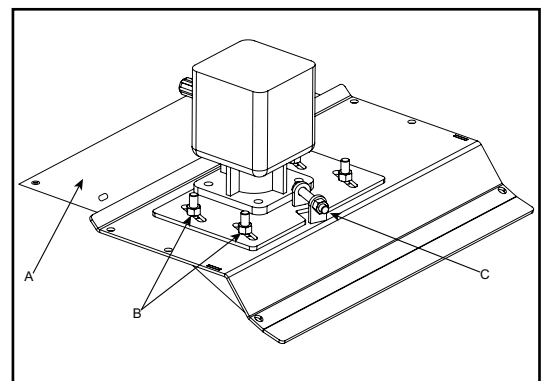
The correct belt tension is approximately 10mm of deflection under thumb pressure halfway between the pulleys.

To replace the belts simply slacken off all adjusters remove old belts and replace with only genuine spare parts. Retighten all tensioners and clamping nuts. New belts always stretch after 3-4 hours work. Retension all belts after 2-3 hours of work.



CENTRE BELTS (ONLY ON RMX240 WITH SLIDING GEARBOX ADJUSTER)

- Remove central guard (A) to inspect belts.
- Loosen four bolts (B) over slots on Gearbox plate.
- Move gearbox backwards or forwards using adjuster (C) until there is approximately 10mm of belt deflection under thumb pressure.
- Re-tighten bolts (B).
- Replace central guard (A).



TROUBLESHOOTING

FAULT	CAUSE	REMEDY
Leaving wheel track uncut	1. Forward speed too fast 2. Cutting height too high	Reduce forward speed Lower cutting height
Bad quality of cut	1. Forward speed too fast 2. Excessive blade wear 3. Belts slipping	Reduce forward speed Replace blades Tighten belts
Narrow strip uncut	1. Possibly missing or broken blade	Inspect blades and replace as necessary
Excessive vibration	1. Damaged or missing blades 2. Main spindle bearing failed 3. Loose part	Inspect and replace blades Inspect bearing, replace if damaged Check all nuts and bolts are tight
Excessive scalping	1. Cutting height too low	Raise cutting height.

WINTER STORAGE

Before winter storage, the RMX Roller Mower should be thoroughly inspected:-

- Repair or replace any worn or broken parts.
- Check oil level in the gearbox. Top up or change with EP90 gear oil depending on hours of operation.
- Take special care to look at the blades, rotor and the bearings.
- Remove the belts and ensure that the rotor is free-spinning.
- Make sure that the belts are in good condition before re-fitting.
- Thoroughly wash the machine to remove all oil, grease, debris and materials.
- Grease all grease points before storage to avoid any corrosion.
- After pressure washing always run mower for a time to expell any water from bearings.

CUTTING BLADES

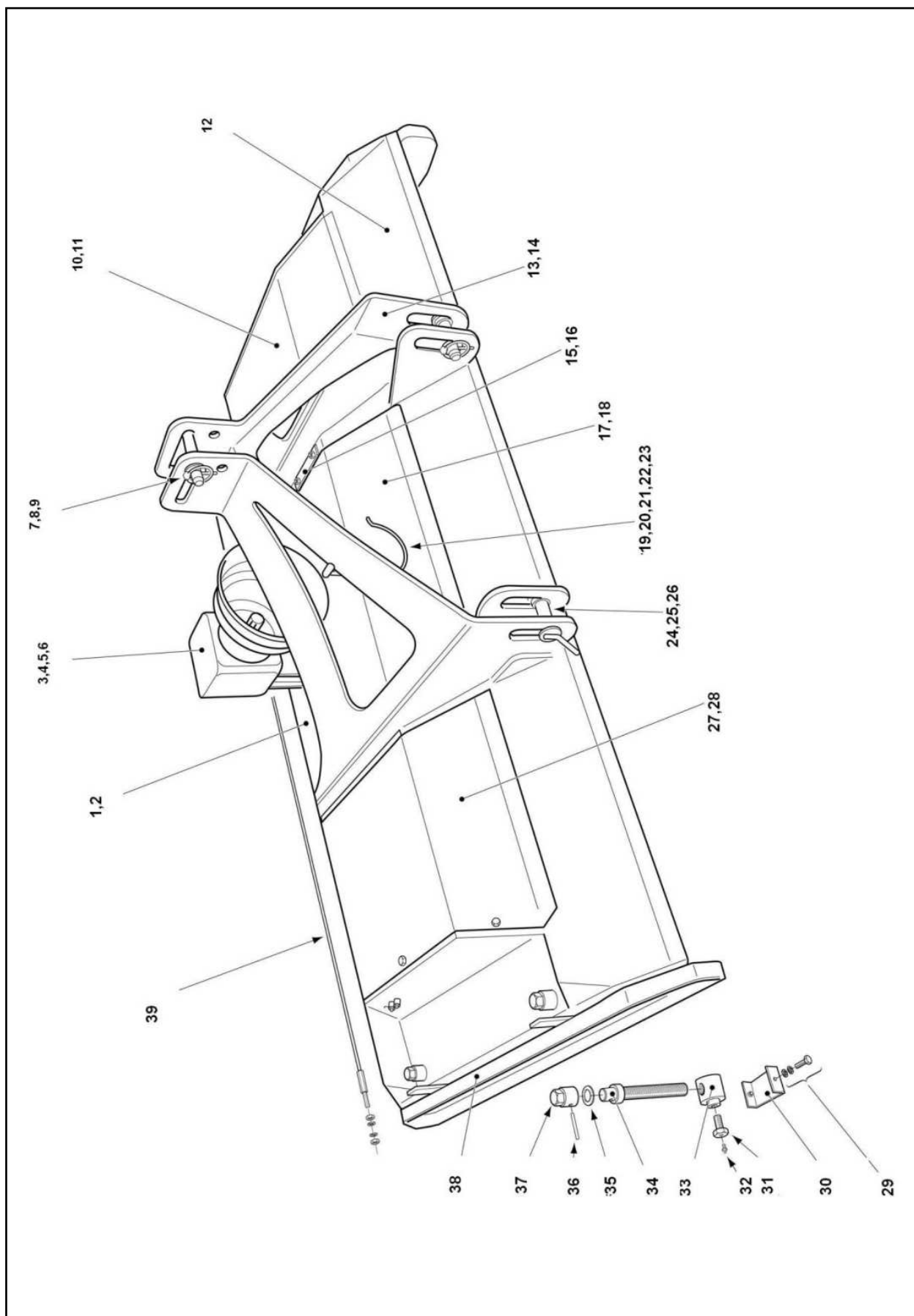
- Inspect the Cutting blades regularly.
- Badly worn or broken blades will unbalance rotors causing vibration.
- **Do not use with unbalanced rotors.**
- Always replace blades on both ends of bars to avoid imbalance.
- Always lift machine and prop the machine up with axle stands. Never get underneath an unsupported machine.
- Replace blade tips using new nylock locking nuts every time.
- If you require mulching blades for your RMX they can be ordered from your Dealer. The Part Number for mulching blades is WX-10670.

SPECIFICATIONS

Wessex Proline RMX Roller Mowers

Model:	RMX 180	RMX 240	RMX 300
Cutting Width:	1.8m	2.4m	3.0m
Overall Width:	1.95m	2.54m	3.13m
Overall Length:	1.40m	1.40m	1.40m
Weight:	460kg	580kg	660kg
Cutting Height Range:	10-100mm	10-100mm	10-100mm
No. of Cutting Spindles:	3 (6 blades)	4 (8 blades)	5 (10 blades)
Gearbox Oil:	EP90	EP90	EP90

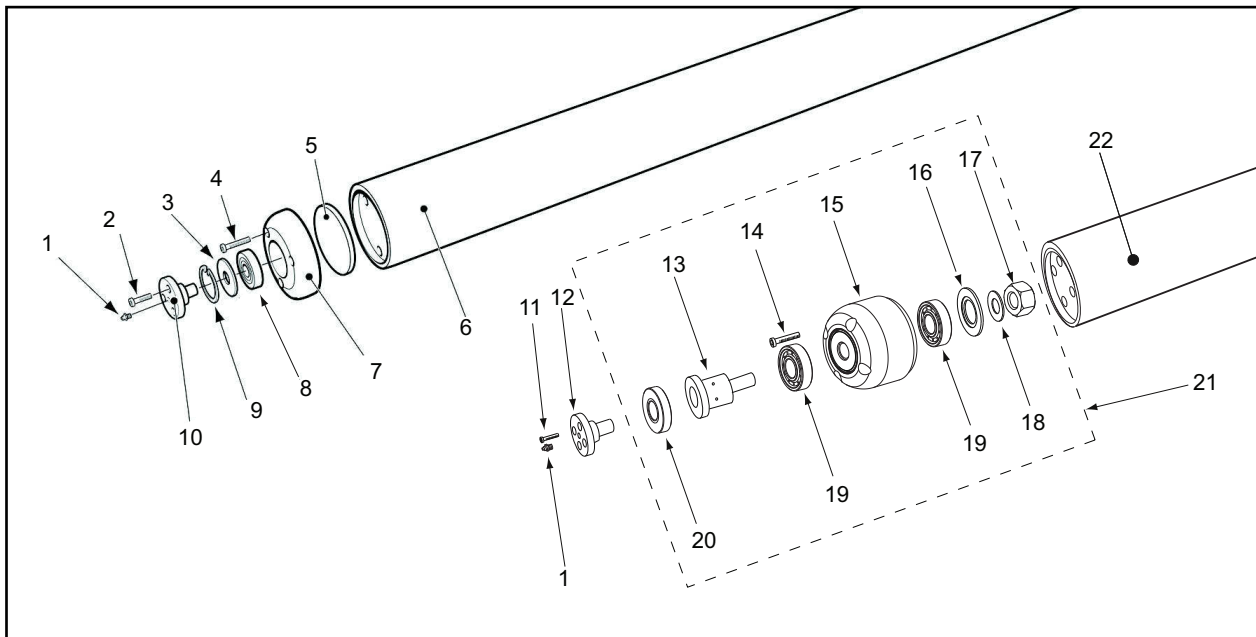
PARTS ILLUSTRATION - RMX 180 / 240 / 300 MAINFRAME



PARTS LIST - RMX 180 / 240 / 300 MAINFRAME

Item No.	RMX180 Part No.	QTY	RMX240 Part No.	QTY	RMX300 Part No.	QTY	Description
1	WX-11457	1	WX-14857	1	WX-11457	1	Gearbox Mounting Plate
2	WX-15003	1	WX-15003	1	WX-15003	1	Gearbox Plate Fastening Set
N/S	N/A	0	WX-15057	1	N/A	0	Belt Adjusting Gearbox Bracket
N/S	N/A	0	WX-15157	2	N/A	0	Adjusting Bracket Bolt Retainer
3	WX-5857	1	WX-5857	1	WX-5857	1	Gearbox
4	WX-0801	1	WX-0801	1	WX-0801	1	Gearbox Fastening Set
5	WX-1878	1	WX-1878	1	WX-1878	1	Cone Guard
6	WX-5103	1	WX-5103	1	WX-5103	1	Cone Guard Fastening Set
7	WX-0127	1	WX-0127	1	WX-0127	1	Lynch Pin
8	WX-0426	1	WX-0426	1	WX-0426	1	Top Link Pin
9	WX-2720	1	WX-2720	1	WX-2720	1	Top Link Washer
10	WX-10678L	1	WX-10778L	1	WX-10878L	1	Belt Cover Left Hand
11	WX-2729	12	WX-2729	12	WX-2729	12	Belt Cover Fastening Set
12	WX-11379	1	WX-11479	1	WX-11579	1	Mainframe
13	WX-11279	1	WX-11279	1	WX-11279	1	Tri-Link Frame
14	WX-15103	1	WX-15103	1	WX-15103	1	Tri-Link Frame Fastening Set
15	N/A	0	WX-11778	1	N/A	0	Pulley Cover Plate
16	N/A	0	WX-15403	1	N/A	0	Pulley Cover Plate Fastening Set
17	WX-10578	1	WX-10578	1	WX-10578	1	Centre Belt Cover
18	WX-2729	4	WX-2729	4	WX-2729	4	Centre Belt Cover Fastening Set
19	WX-3925	1	WX-3925	1	WX-3925	1	Spring
20	WX-6430	1	WX-6430	1	WX-6430	1	P.T.O. Hook Retainer
21	WX-15203	1	WX-15203	1	WX-15203	1	P.T.O. Hook Retainer Fastening Set
22	WX-0229	1	WX-0229	1	WX-0229	1	D-Shackle
23	WX-9280	1	WX-9280	1	WX-9280	1	P.T.O. Hook
24	WX-0826	2	WX-4028	2	WX-4028	2	Bottom Link Pin
25	WX-5528	4	WX-3828	4	WX-3828	4	Bottom Link Bush
26	WX-0127	2	WX-0127	2	WX-0127	2	Lynch Pin
27	WX-10678R	1	WX-10778R	1	WX-10878R	1	Belt Cover - Right Hand
28	WX-2729	4	WX-2729	4	WX-2729	4	Belt Cover Fastening Set
29	WX-0705	1	WX-0705	1	WX-0705	1	Adjuster Cover Fastening Set
30	WX-14456	4	WX-14456	4	WX-14456	4	Adjuster Cover
31	WX-8002	4	WX-8002	4	WX-8002	4	Skid Bolt
32	WX-0246	4	WX-0246	4	WX-0246	4	Grease Nipple
33	WX-14556	4	WX-14556	4	WX-14556	4	Height Adjustment Nut
34	WX-14656	4	WX-14656	4	WX-14656	4	Height Adjustment Thread
35	WX-2420	4	WX-2420	4	WX-2420	4	Nylon Washer
36	WX-4222	4	WX-4222	4	WX-4222	4	Roll Pin
37	WX-14756	4	WX-14756	4	WX-14756	4	Height Adjustment Hexagon
38	WX-3574	2	WX-3574	2	WX-3574	2	Roller Carrier
39	WX-6530	1	WX-6630	1	WX-6730	1	Roller Scraper

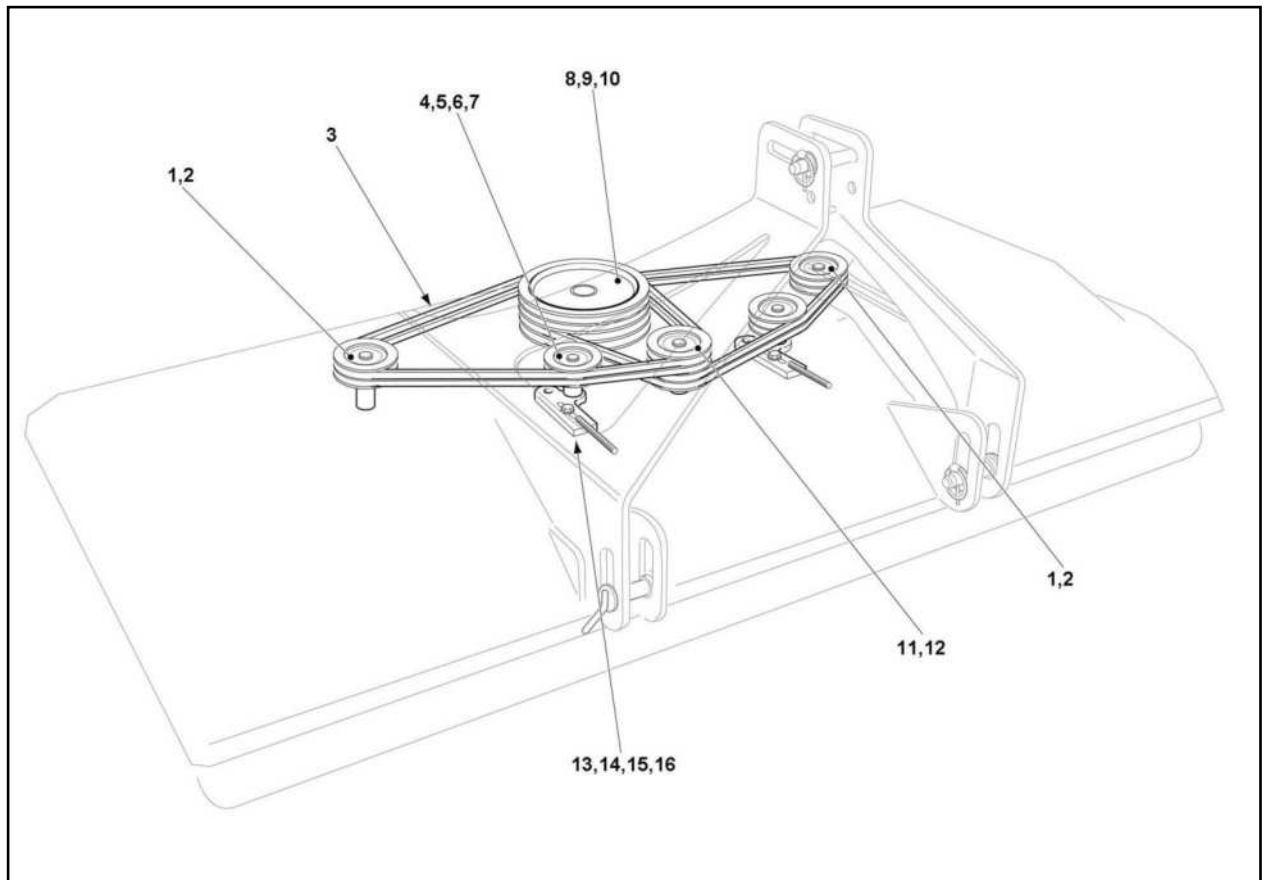
PARTS ILLUSTRATION - RMX ROLLERS



PARTS LIST - RMX ROLLERS

Item No.	RMX180 Part No.	QTY	RMX240 Part No.	QTY	RMX300 Part No.	QTY	Description
1	WX-0246	4	WX-0246	4	WX-0246	4	Grease Nipple
2	WX-15603	4	WX-15603	4	WX-15603	4	Roller Spindle Fastening Set
3	WX-2655	4	WX-2655	4	WX-2655	4	Roller Bearing Shield
4	WX-15703	4	WX-15703	4	WX-15703	4	Roller End Fastening Set
5	WX-19580	4	WX-19580	4	WX-19580	4	Rubber Disc
6	WX-2755	2	WX-2855	2	WX-2955	2	Roller (3 Bolt End)
7	WX-2555	4	WX-2555	4	WX-2555	4	Roller End (3 Bolts)
8	WX-1838	4	WX-1838	4	WX-1838	4	Roller Bearing
9	WX-4122	4	WX-4122	4	WX-4122	4	Circlip
10	WX-2455	4	WX-2455	4	WX-2455	4	Roller Spindle
11	WX-15603	4	WX-15603	4	WX-15603	4	Roller Spindle Fastening Set
12	WX-6355	4	WX-6355	4	WX-6355	4	Roller Spindle (With Flats)
13	WX-4355	4	WX-4355	4	WX-4355	4	Central Spindle
15	WX-4255	4	WX-4255	4	WX-4255	4	Roller End (4 Bolts)
16	WX-4455	4	WX-4455	4	WX-4455	4	Roller Bearing Shield
17	WX-0614	4	WX-0614	4	WX-0614	4	Nut
18	WX-0615	4	WX-0615	4	WX-0615	4	Washer
19	WX-8038	8	WX-8038	8	WX-8038	8	Taper Bearing
20	WX-2345	4	WX-2345	4	WX-2345	4	Roller Oil Seal
21	WX-4155	4	WX-4155	4	WX-4155	4	Roller End Assembly
22	WX-6755	2	WX-6955	2	WX-7055	2	Roller (4 Bolt End)

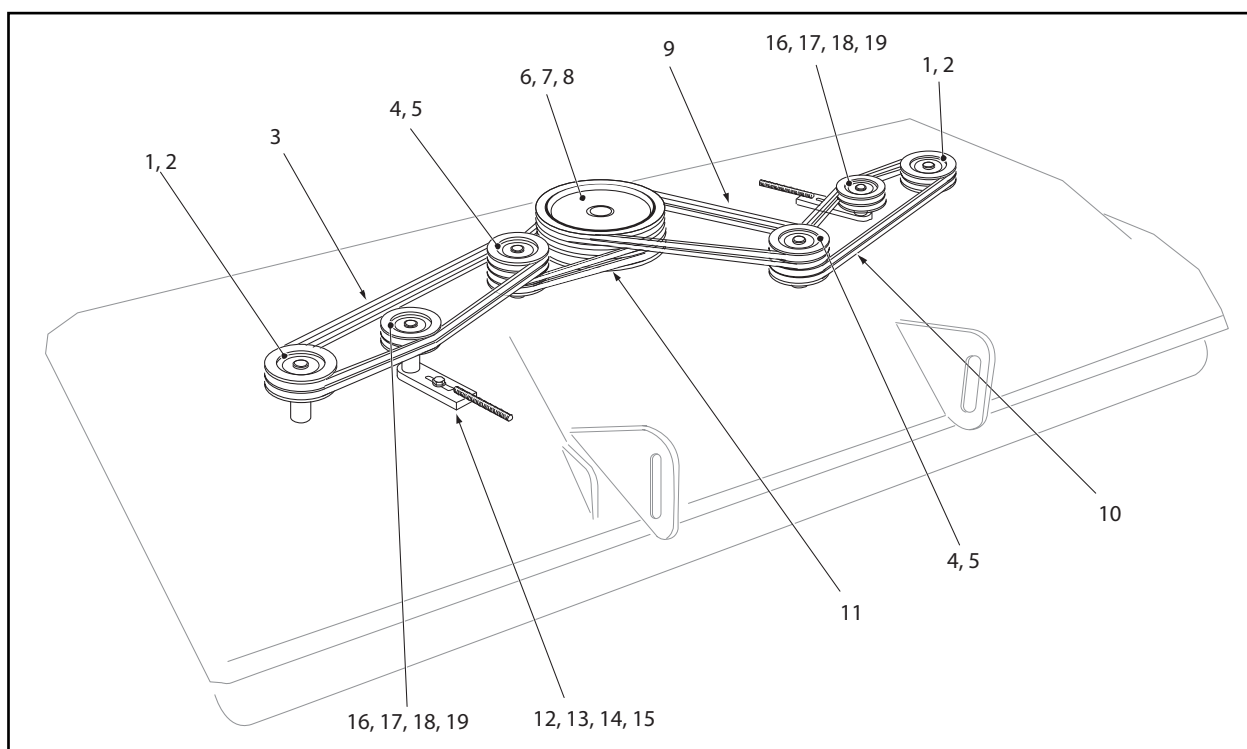
PARTS ILLUSTRATION - RMX 180 DRIVE BELTS



PARTS LIST - RMX 180 DRIVE BELTS

Item No.	Part No.	Description	Qty. per Machine
1	WX-10362	2 Row Pulley	2
2	WX-11362	Taper Lock	2
3	WX-0234	Belt	4
4	WX-10562	Jockey Pulley	2
5	WX-6038	Jockey Bearing	2
6	WX-4022	Circlip	2
7	WX-15903	Jockey Pulley Bolt	2
8	WX-11162	Gearbox Pulley	1
9	WX-8662	Taper Lock	1
10	WX-0647	Gearbox Key	1
11	WX-10462	4 Row Pulley	1
12	WX-11362	Taper Lock	1
13	WX-13066	Belt Tensioner	2
14	WX-16003	Belt Tensioner Fastening Set	2
15	WX-12966	Jockey Pillar - High	1
16	WX-12866	Jockey Pillar - Low	1

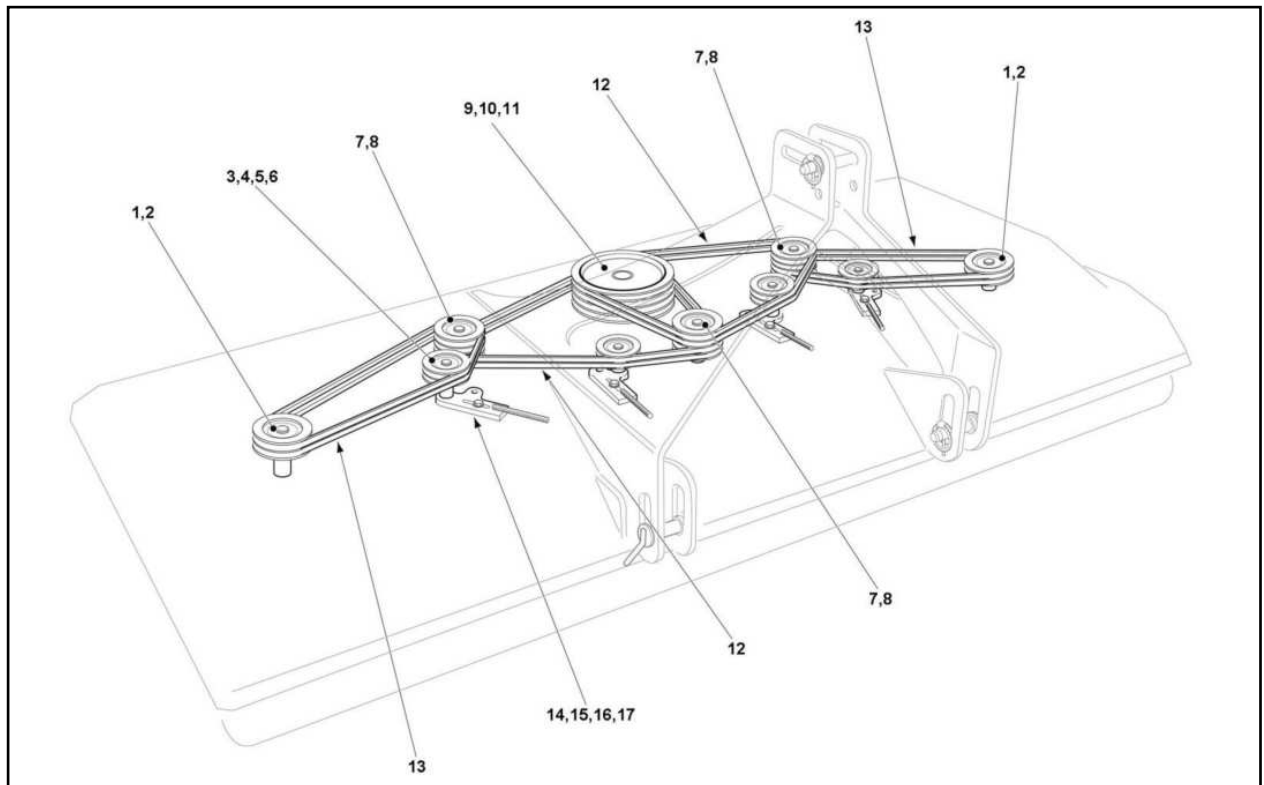
PARTS ILLUSTRATION - RMX 240 DRIVE BELTS



PARTS LIST - RMX 240 DRIVE BELTS

Item No.	Part No.	Description	Qty.
1	WX-10362	2 Row Pulley	2
2	WX-11362	Taper Lock	2
3	WX-4534	Belt	2
4	WX-10462	4 Row Pulley	2
5	WX-11362	Taper Lock	2
6	WX-11162	Gearbox Pulley	1
7	WX-8662	Taper Lock	1
8	WX-0647	Gearbox Key	1
9*	WX-5134	Belt (When sliding gearbox adjuster used)	2
9*	WX-5234	Belt (When jockey pulley adjuster used)	2
10	WX-4534	Belt	2
11	WX-5134	Belt	2
12	WX-13066	Belt Tensioner	2
13	WX-16003	Belt Tensioner Fastening Set	2
14	WX-12966	Belt Tensioner Pillar - High	1
15	WX-12866	Belt Tensioner Pillar - Low	1
16	WX-10562	Jockey Pulley	2
17	WX-6038	Jockey Bearing	2
18	WX-4022	Circlip	2
19	WX-15903	Jockey Pulley Bolt	2

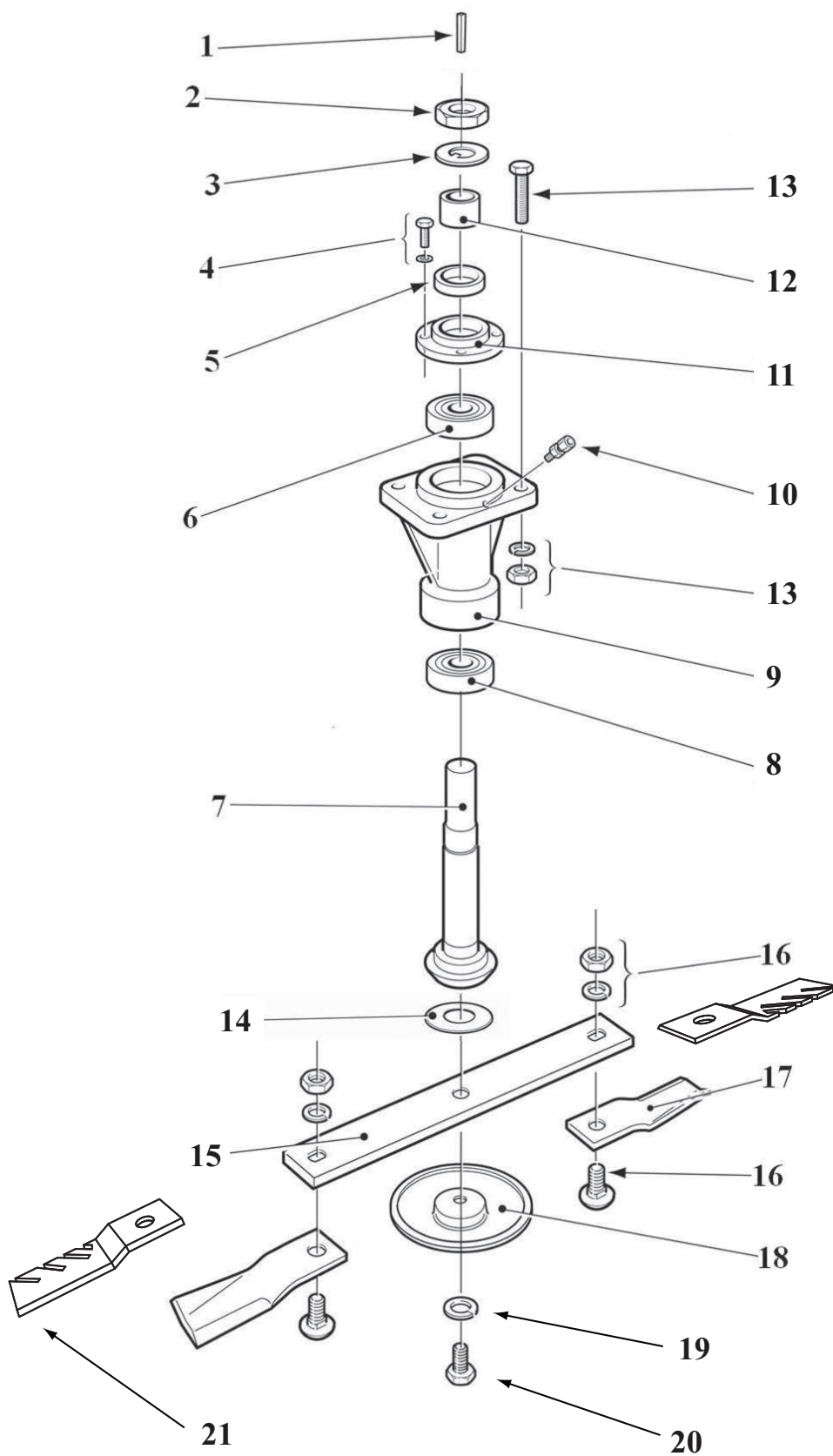
PARTS ILLUSTRATION - RMX 300 DRIVE BELTS



PARTS LIST - RMX 300 DRIVE BELTS

Item No.	Part No.	Description	Qty. per Machine
1	WX-10362	2 Row Pulley	2
2	WX-11362	Taper Lock	2
3	WX-10562	Jockey Pulley	4
4	WX-6038	Jockey Bearing	4
5	WX-4022	Circlip	4
6	WX-15903	Jockey Pulley Bolt	4
7	WX-10462	4 Row Pulley	3
8	WX-11362	Taper Lock	3
9	WX-11162	Gearbox Pulley	1
10	WX-8662	Taper Lock	1
11	WX-0647	Gearbox Key	1
12	WX-0234	Drive Belt	4
13	WX-4534	Drive Belt	4
14	WX-13066	Belt Tensioner	4
15	WX-16003	Belt Tensioner Fastening Set	4
16	WX-12966	Belt Tensioner Pillar - High	2
17	WX-12866	Belt Tensioner Pillar - Low	2

PARTS ILLUSTRATION - RMX 180 / 240 / 300 SPINDLES ASSEMBLY



PARTS LIST - RMX 180 / 240 / 300 SPINDLES ASSEMBLY

Item No.	Part No.	Description	Qty. per Spindle
1	WX-1947	Key	1
2	WX-15066	Spindle Nut	1
3	WX-0120	Tab Washer	1
4	WX-4401	Fastening Set	1
5	WX-0145	Seal	1
6	WX-0338	Top Spindle Bearing	1
7	WX-15166	Spindle	1
8	WX-1238	Bottom Spindle Bearing	1
9	WX-1966	Spindle Housing	1
10	WX-0346	Grease Nipple	1
11	WX-2166	Oil Seal Housing	1
12	WX-14966	Spindle Spacer	1
13	WX-2701	Spindle Assembly Fastening Set	1
14	WX-0220	Fibre Washer	1
15	WX-7270	Blade Bar	1
16	WX-1739	Blade Bolt	2
16	WX-3039	Blade Bolt for Mulching Blade	2
17	WX-10070	Gold Cut Blade	2
18	WX-7470	Anti-scalp Boss	1
19	WX-3525	Lock Washer	1
20	WX-0439	Centre Blade Bolt	1
21	WX-10670	Mulching Blade	2
2-12	WX-1966B	Spindle Assembly	1

PTO SHAFT OPERATION AND MAINTENANCE

IMPORTANT!

P.T.O. drive shafts must only be used for their intended purpose.

P.T.O. drive shafts are designed for specific machine types and power requirements.

They must not be replaced by other models.

Ensure that the P.T.O. drive shaft is securely connected.

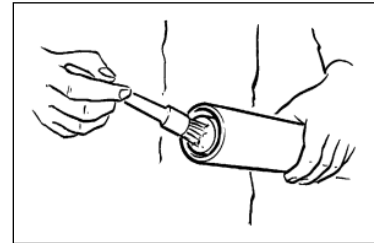
Only use a completely protected drive system:

P.T.O. drive shaft with complete guard and complementary guard on tractor and implement. A complete guard is essential in all working positions.

LUBRICATION

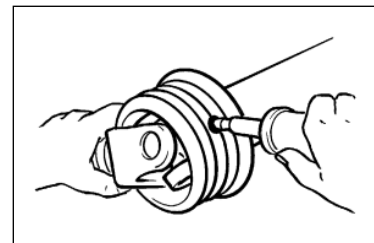
Lubricate with quality grease before starting work and every 40 operating hours.

Ensure the P.T.O. guard bearings are lubricated, the end ball shaped covers need retracting to expose all grease nipples.



Clean and grease the P.T.O. drive shaft before each prolonged period of non-use.

Grease the guard tubes in winter to prevent freezing.

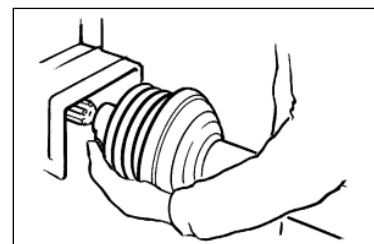


COUPLING THE P.T.O. SHAFT

Clean and grease the P.T.O. and PIN

Q.-d pin

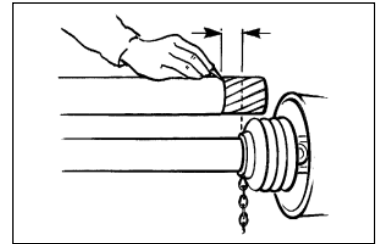
Press q.-d. pin and simultaneously push P.T.O. drive shaft onto P.T.O. until pin engages.



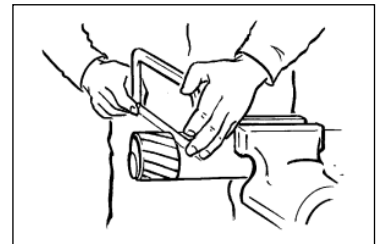
PTO SHAFT OPERATION AND MAINTENANCE

LENGTH ADJUSTMENT

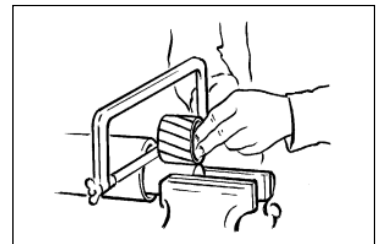
To adjust the length, hold the half-shafts next to each other in the shortest working position and mark them.



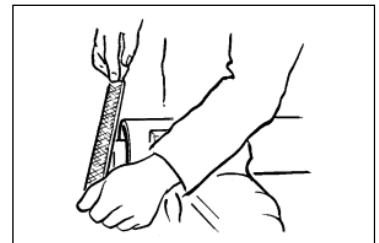
Shorten inner and outer guard tubes equally.



Shorten inner and outer sliding profiles by the same length as the guard tubes.



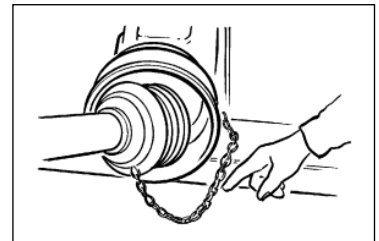
Round off all sharp edges and remove burrs.
Grease sliding profiles.



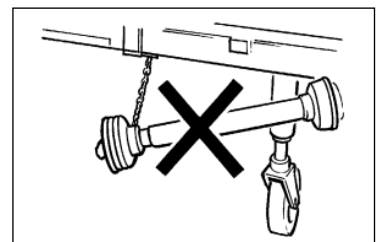
No other changes may be made to the P.T.O. drive shaft and guard.

CHAINS

Chains must be fitted so as to allow sufficient articulation of the shaft in all working positions.



Do not let the chains encircle the P.T.O. guard in use as this will shorten the life of the P.T.O. guard.



The PTO drive shaft must not be suspended from the chains! Please use the P.T.O. Support Hook provided.

[illegible]

OPERATOR'S NAME		DATE OF INSPECTION		HOURS	
					Spindle Rotor, remove tangled objects
					Inspect condition of Blades
					All bolts and nuts, re-tighten if req'd.
					Grease Rotor Bearings
					Grease Roller Bearings
					Check Gearbox Oil Level
					Inspect Roller Scraper Wire
					Inspect condition of Belts
					Inspect tension of Belts

NOTES



Certificate of CE Conformity

Machine Model:

RMX 180 / 240 / 300

Description:

ROLLER MOWER

*I hereby certify that the machine detailed hereon
conforms to:*

**European Directives 2008/42/EC
Supply of Machinery Regulations 2008
As amended 91/368EEC – 93/44EEC – 93/68EEC
HSE AIS 33**

Signed:

.....
Quality Manager

Date:

MARCH 2011

Wessex International

Charlton House, Caxton Place, East Portway Industrial Estate, Andover, Hampshire SP10 3QN
Telephone: 01264 345870 Fax: 01264 345 880

www.wessexintl.com



Wessex International
Charlton House, Caxton Close, East Portway Industrial Estate, Andover Hampshire. SP10 3QN
Telephone: 01264 345870 Fax 01264 345880
e-mail: sales@wessexintl.com

www.wessexintl.com



WESSEX PROLINE RMX, CR & FRX INSTALLATION RECORD

Upon installation of this machine, it is the Dealers responsibility to fill out the Installation Record below and return to Wessex International either by Fax to 01264 345880 or Email warranty@wessexintl.com.

IF THIS FORM IS NOT RETURNED, WE CANNOT ISSUE THE CUSTOMER THE APPLICATION FORM TO REGISTER FOR THE EXTENDED WARRANTY ON THEIR MACHINE.

END USER DETAILS

NAME : _____

ORGANISATION : _____

ADDRESS : _____

TELEPHONE : _____ MOBILE : _____

EMAIL : _____

DEALER: _____ BRANCH : _____

MACHINE MODEL : _____ SERIAL NO: _____

INSTALLATION DATE : _____

THE MACHINE DETAILED ABOVE HAS BEEN CORRECTLY INSTALLED AND THE FOLLOWING POINTS HAVE BEEN DISCUSSED WITH THE CUSTOMER :

- 1 Correct Machine Operation
- 2 Operational Health & Safety
- 3 Machine Setting and Adjustments
- 4 Maintenance
- 5 Importance of tensioning belts after initial 2 - 3 hours work and routinely thereafter

Delivery Checklist

Oil in gearboxes
All PTO Shafts properly attached with Safety Chains attached
All PTO Shafts greased
All shields, guards and deflectors in place
Check wheel nuts are tight
All fixings tight

Inspected by : _____

IMPORTANT INFORMATION TO PREVENT DAMAGE - RELEVANT TO ALL TRAILED MACHINES

Ensure that the tractor link arms are removed or at least dropped to prevent contact with the PTO shaft when turning.
Avoid sharp turns where the rear wheel of the tractor comes into contact with the drawbar or PTO shaft. Turning too sharp can also cause damage to the PTO shaft, it's universal joints and tractor tyres.

DEALER SIGNATURE : _____ NAME : _____
DATE : _____

Upon receipt of this form, we will forward the Extended Warranty Application Form to the End User.

THANK YOU FOR FACILITATING THE SALE OF ANOTHER WESSEX PROLINE MACHINE!

WESSEX INTERNATIONAL

Charlton House, Caxton Close, East Portway Industrial Estate, Andover, Hampshire SP10 3QN

T : 01264 345870 F : 01264 345880 E : sales@wessexintl.com