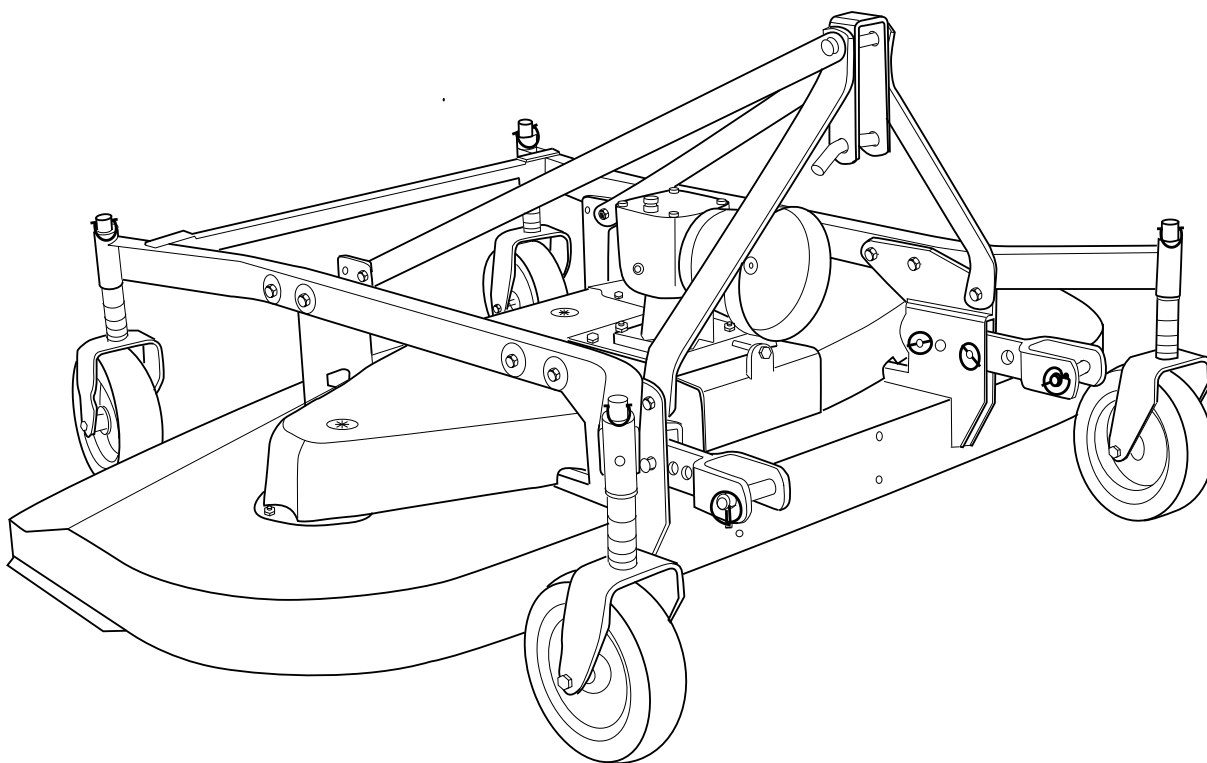


Operation Manual and Parts Book

Country CM210 Finishing Mower



Product Code: L2045

CONTENTS

Welcome to your new Wessex Product	2
Safety Decals	3
Important Safety Warnings	4
Warranty	5
Setting up your Mower	6
Special Adjustment for Fine Grass Cutting	6
Using your Wessex Mower	6
Belt Adjustement	7
Lubrication	7
Maintenance	7
Parts Illustration - Mainframe Assembly	8, 10
Parts List - Mainframe Assembly	9, 11
Parts Illustration - Wheel Assembly	12
Parts List - Wheel Assembly	13
Parts Illustration - Gearbox Assembly	14
Parts List - Gearbox Assembly	15
PTO Shaft - Operation and Maintenance	16, 17
Safety Training Induction	18
Daily Inspection Record	19
Notes	20
CE Certificate	21

WELCOME TO YOUR NEW WESSEX PRODUCT

Thank you for purchasing a Wessex product. As a Wessex customer, you now number among the most important people of our business and we will endeavour to give you the best service available through our dealer network.

Please read this Manual carefully and familiarise yourself and other persons that will be using the machine with its contents, to ensure the optimum performance and working life of your machine. It is advisable that a copy of this Manual is kept in the workshop and one copy with the machine. Further copies are available through your dealer.

On delivery, your dealer should go through the workings of the machine with you, explaining the setting up procedures, all of which are contained in this manual for further reference. The Warranty Registration Form must also be completed and returned to us **within 7 days of delivery** in order to validate the Warranty.

**PLEASE READ THE FOLLOWING PAGES CAREFULLY BEFORE USING YOUR MACHINE
AND KEEP THIS MANUAL IN A SAFE PLACE.**

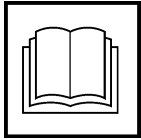


**THIS SAFETY SYMBOL IS TO ALERT OPERATORS OF A HAZARD
THAT MAY RESULT IN INJURY.
ALWAYS FOLLOW INSTRUCTIONS CAREFULLY**

SAFETY DECALS



- GB **ATTENTION** Description of pictograms.
 F **ATTENTION** Description des pictogrames.
 D **VORSICH** Beschreibung der piktogramme.



- GB Read Operating manual before use.
 F Lisez Manual D'Opération avant l'utilisation.
 D Vor der Benutzung, Betriebshandbuch lesen.



- GB Do not use without pto shaft guard.
 F Ne pas utiliser sans de dispositif de sûreté de l'arbre (arbre d'entraînement).
 D Nicht benutzen ohne p.t.o. (antriebswelle) schutvorrichtung.



- GB Ear defenders must be worn.
 F Défenseurs des oreilles doivent être portés.
 D Gehörschutz getragen werden.



- GB Never remove guards or attempt adjustment until rotor has stopped.
 F Ne retirez jamais les gardes ou d'ajustement tentative jusqu'à ce que toutes les pièces mobiles ont été interrompus.
 D Schutvorrichtung niemals abnehmen oder einstellung versuchen, bevore der rotor abstellt.



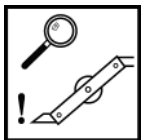
- GB Bystanders must be at least 20 metres from machine range of action.
 F Des spectateurs doivent s'écarter au moins metres du rayon d'action de la machine.
 D Umstehenden müâen sich mindestens 20 meter vom maschinenbetriebsraum entfernen.



- GB Stand clear. Flying objects possible.
 F S'écartez! Possibilité d'objets volants.
 D Zurückbleiben! Herumfliegende objekte möglich



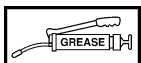
- GB Liftt Machine before turning
 F Levez la machine avant de la tourner
 D Maschine aufheben, bevor man sie umdreht.



- GB Examine blades regularly. The operator is responsible for machine damage caused by unbalanced rotors.
 F Examinez des lames régulièrement. L'opérateur est responsable des dommages à la machine provoqués par des rotors mal équilibrés
 D Klängen regelmäßig kontrollieren. Der abeiter ist an den durch unausgewogenen rotoren maschinenschäden verantwortlich.



- GB Keep hands and feet clear
 F Garder les mains et les pieds.
 D Halten Sie Ihre Hände und Füße.



- GB Grease points
 F Les points de graissage
 D Grease Punkte.

IMPORTANT SAFETY WARNINGS



Wessex machines are guarded for your protection, but you must always observe certain elementary precautions. Machines are potentially **dangerous** and should be used with the greatest respect and **ALL OPERATORS MUST** read this manual and be aware of all safety precautions.

1. **NEVER** attempt any adjustment whatsoever, unless the machine is **COMPLETELY** at a standstill.
2. **NEVER** attempt to clear any obstructions around the mower unless the machine is **COMPLETELY** at a standstill.
3. **NEVER** remove belt guards unless the machine is **COMPLETELY** at a standstill.
4. **NEVER** remove safety guards which are provided for your protection.
5. **NEVER** operate the mower with people behind, keep everybody (especially children and animals) at a safe distance, **minimum 20 metres**.
6. Stand well back from the machine when cutters are spinning.
7. Regularly inspect the **BLADES AND FIXING BOLTS** to ensure that they are in tip-top condition. Replace blades **IMMEDIATELY** if any signs of fracture or excess wear becomes apparent. Serious damage, which is excluded from our warranty conditions, may result from using your mower with an unbalanced rotor. When replacing blades, always fit new mounting bolts and nuts to ensure that the rotor is balanced and running smoothly.

HEALTH AND SAFETY - Noise at Work Regulations

READING AT THE OPERATORS EAR CM series mowers : 94 D.B.A

Depending on conditions and material being cut, this reading may alter, it is therefore advisable for users to do their own assessment.



In compliance with the above regulations, Ear Protectors must be worn when operating machinery.

WARRANTY

Your Wessex product or equipment is warranted free from defect in workmanship or manufacture for one year from date of purchase. Any parts which appear to us to be defective, either in material or workmanship shall be replaced or repaired at no cost to the purchaser, subject to the following conditions:

1. The registration card enclosed with this booklet must be returned to us within seven days of purchase.
2. Any failure in the machine should be reported in the first instance immediately to your dealer, who will act on your behalf to resolve the matter to your satisfaction.
3. The defective parts will be returned by your dealer to us, accompanied by a full statement describing the failure and the circumstances and conditions in which the failure occurred.
4. The following are specifically excluded from our terms of warranty:
 - a) Fair wear and tear, especially to belts, brushes, blades and spinners.
 - b) Damage to blades or brushes caused through incorrect positioning of the rotor (see instructions).
 - c) Damage caused by neglect or lack of lubrication.
 - d) Damage caused by misuse or abuse.
 - e) Damage caused whilst the machine is in transit.
 - f) Damage caused to the frame of the machine by running the machine with unbalanced rotors, blades or spinners.
 - g) Damage caused to the machine by use with loose nuts, bolts, screws or any other type of fittings.
5. The warranty is for the benefit of the first user only.
6. Wessex International decisions will be final and binding.

Note:

It is recommended that every machine is inspected after one hour of operation to check that all nuts, bolts, screws or any other types of fixings are tight and any loose fixings or components should be rectified as appropriate.

Further inspections should be carried out at regular intervals thereafter.

SETTING UP YOUR MOWER

1. Stand your machine on level ground and ensure that the height adjustment stems above each wheel are held in the same position by pins and clips provided.
2. Reverse your tractor up to your mower, and connect the bottom link arms into the clevis provided. On 4 wheel mowers, ensure that the bushes are located in the slots.
3. Adjust the right hand link arm so that both bottom link pins are at the same position in the slots.
4. Connect the top link.
5. Connect the PTO shaft, ensuring that the shaft is not too long for your tractor. If necessary, the shaft, which is of tubular section, may be easily cut with a hacksaw, taking care to cut each tube to the same amount (see PTO shaft Operation & Maintenance).

SPECIAL ADJUSTMENT FOR FINE GRASS CUTTING

1. After having set up the machine as above, one pivoting jaw pin may be removed, to allow the pivoting jaw to pivot. Adjust the top link so that the pivoting jaw is in the upright position.
2. If the mower scalps the ground, it is most likely that the mower is set too low for the conditions. Raise the cutting height by one increment on each of the wheel adjustment bars.
3. If set up carefully in accordance with these instructions, your mower will give good service, leaving a fine finish and following ground contours accurately.
4. Replace the pin in the pivoting jaw for road transport.

USING YOUR WESSEX MOWER

1. The *correct* PTO speed for your mower is 540 rpm. **NEVER** use the mower at a PTO speed in excess of this.
2. Having set the mower up in accordance with the instructions above, engage the PTO, and, selecting a low forward speed, gently release the clutch.
3. You will establish by experience what is the optimum forward speed for your conditions, but on regularly maintained grass, you should achieve a good finish at 5-6 mph.
4. Long wet grass will have to be cut more slowly. In very difficult conditions better results are obtained by making two passes, in opposite directions - lowering the cutting height for the second pass.

BELT ADJUSTMENT

The drive belts are adjusted by moving the gearbox on its mounting bracket in relation to the mower deck.

First slacken the four holding bolts on the base of the gearbox-mounting bracket. To tighten belts, turn the adjusting nut anti clockwise, and to slacken the belts, turn clockwise.

The belts should be free to move about 12 mm under finger pressure. If they are too tight, there will be undue stress on the driven parts.

When belts are adjusted correctly, lock the adjusting nut in place, and tighten the gearbox holding bolts. Both drive belts are tightened equally.

LUBRICATION

IMPORTANT Only use high performance grease. Specially formulated for high speed, high temperature and moisture resistance.

DAILY Grease the spindle bearings through the grease nipple above the spindle belt pulleys.
Grease both cross bearings on the PTO shaft.
Grease the tubes of the PTO shaft.

REGULARLY Grease the wheel bearings.
Grease the castor assembly.
Check the gearbox oil level. The level plug is on the side of the gear box. Top up with a 90 grade gear oil.

MAINTENANCE

Check ALL FASTENING SETS after first 8 hours of work.

BELTS

These should be checked periodically, and replaced if found to be fraying, cut, or damaged in any other way.

BLADES

These should be regularly checked for condition. Damaged blades cause imbalance in the rotor, and in turn can cause serious damage to the mower, which is specifically excluded from our warranty conditions.

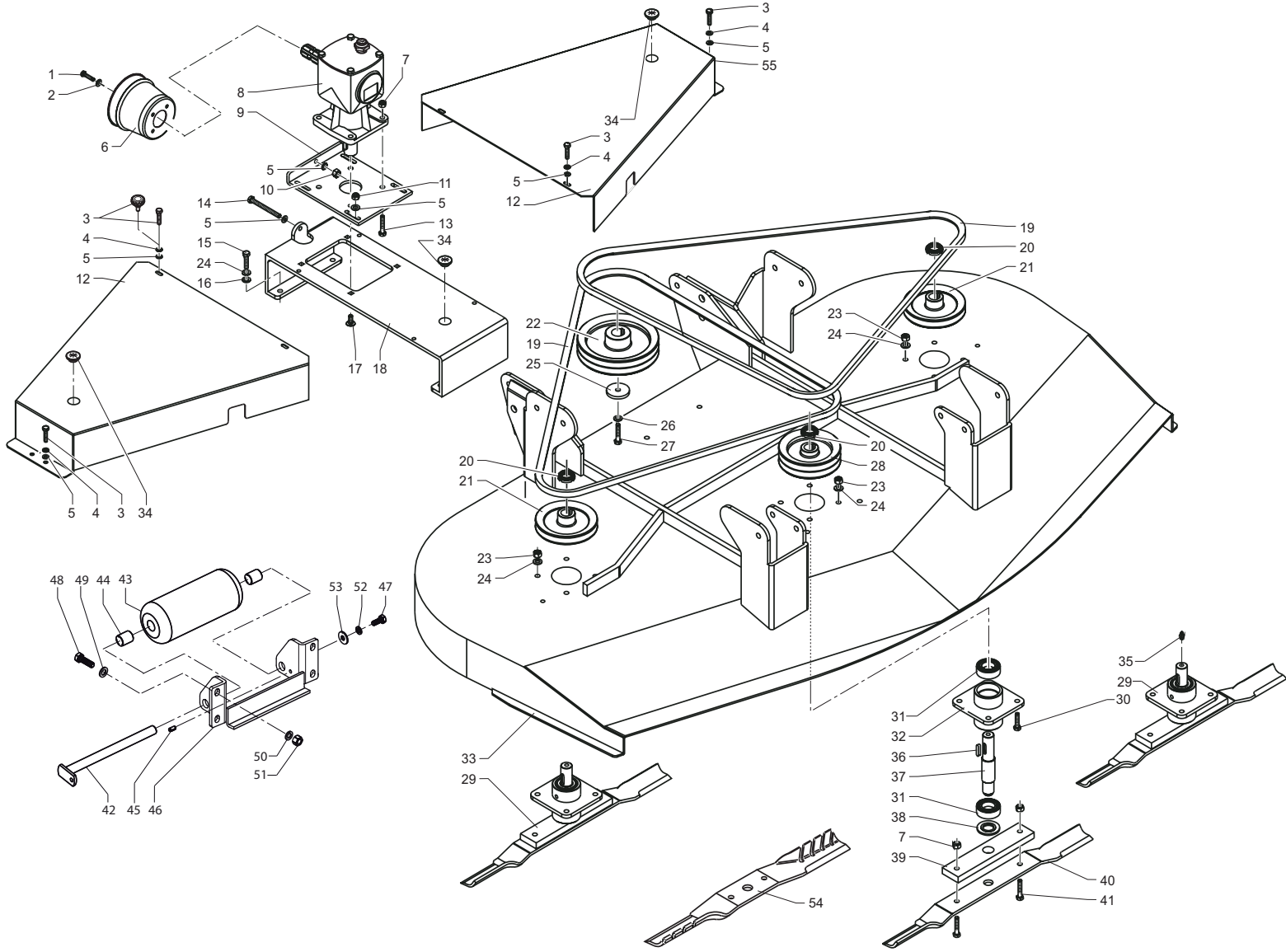
If the mower begins to vibrate, stop work immediately and investigate. Almost certainly the cause will be damaged blades.

SPARE PARTS

Spare parts for your Wessex Mower can be obtained through our extensive dealer network. For details of your nearest supplier or technical information, please email parts@wessexintl.co.uk or telephone 01264 345870.

Drw: 1

PLATE 1



PARTS LIST - CM MAINFRAME ASSEMBLY - PLATE 1

Item No.	Part No.	Description	Qty.
1	SCA-31508016	Bolt	4
2	SCA-34118008	Washer	4
3	SCA-31510020	Bolt	8
3	SCA-6601020	Knob	4
4	SCA-34026010	Washer	8
5	SCA-34120010	Washer	8
6	SCA-1883510	Guard	2
7	SCA-34108012	Self-Locking Nut	4
8	SCA-80310-06	Gearbox	1
9	SCA-5932707	Plate	1
10	SCA-34106010	Self-Locking Nut	1
11	SCA-34108010	Self-Locking Nut	4
12	SCA-5132820	Belt Cover	1
13	SCA-31312040	Bolt	4
14	SCA-31510080	Bolt	1
15	SCA-31512035	Bolt	4
16	SCA-34118012	Flat Washer	4
17	SCA-33010030	Bolt	4
18	SCA-5932804	Support	1
19	SCA-6722360	Belt	2
20	SCA-34127030	Plug	3
21	SCA-5642707	Driven Pulley	2
22	SCA-5642705	Driving Pulley	1
23	SCA-3400012	Self-Locking Nut	12
24	SCA-34026012	Washer	12
25	SCA-5132734	Washer	1
26	SCA-34121012	Spring Washer	1
27	SCA-31312040	Bolt	1
28	SCA-5642706	Driven Pulley	1
29	SCA-5002742	Blade Assembly	3
30	SCA-51512035	Bolt	12
31	SCA-2216206	Bearing	6
32	SCA-5002802	Support	3
33	SCA-5002784	Frame	1
34	SCA-6603516	Oil Plug	3
35	SCA-6560008	Grease Nipple	3
36	SCA-6361035	Key	3
37	SCA-5202704	Shaft	3
38	SCA-5132778	Spacer	3
39	SCA-5832734	Plate	3
40	SCA-5812707	Blade	3

Drw: 1

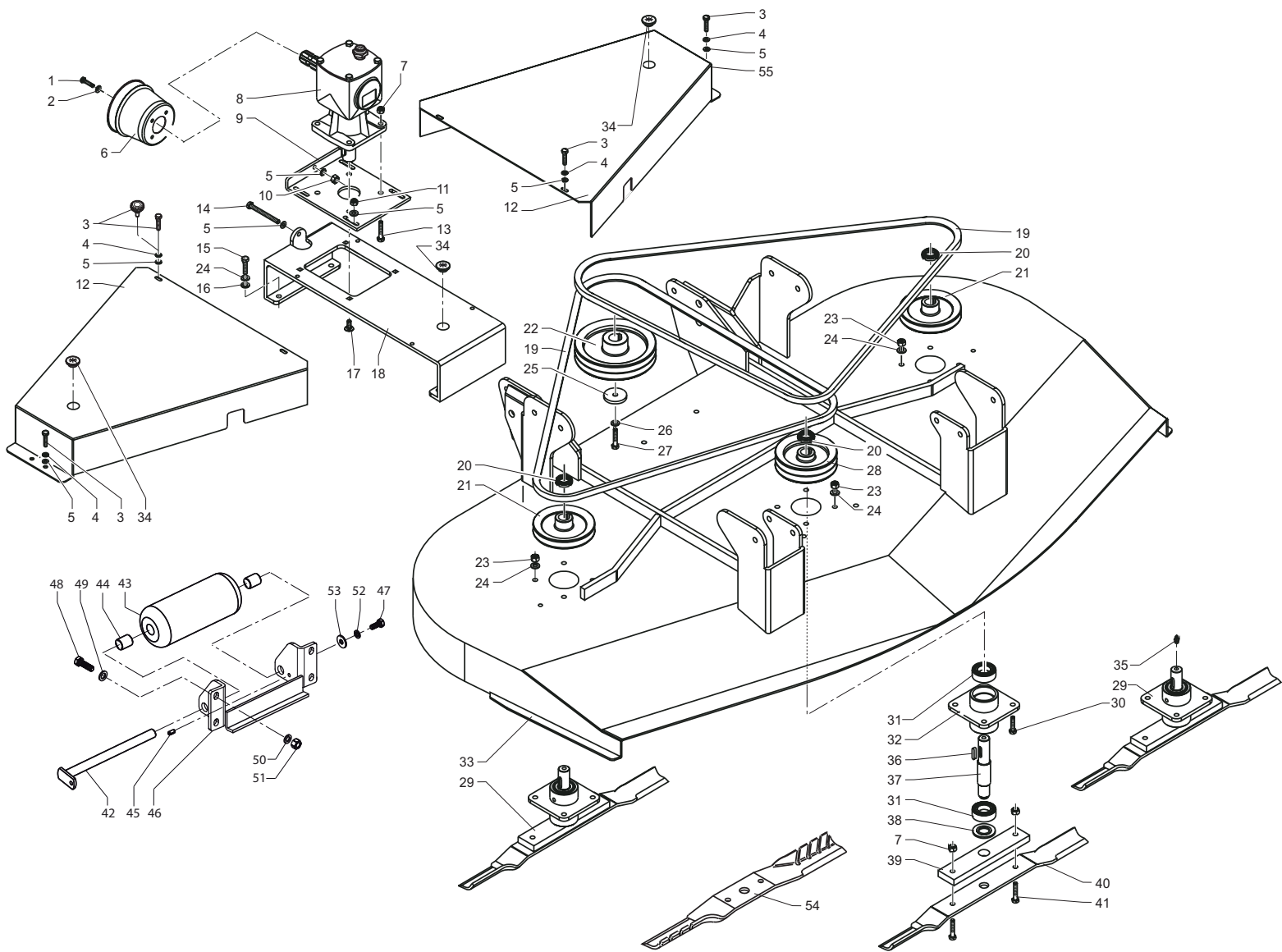
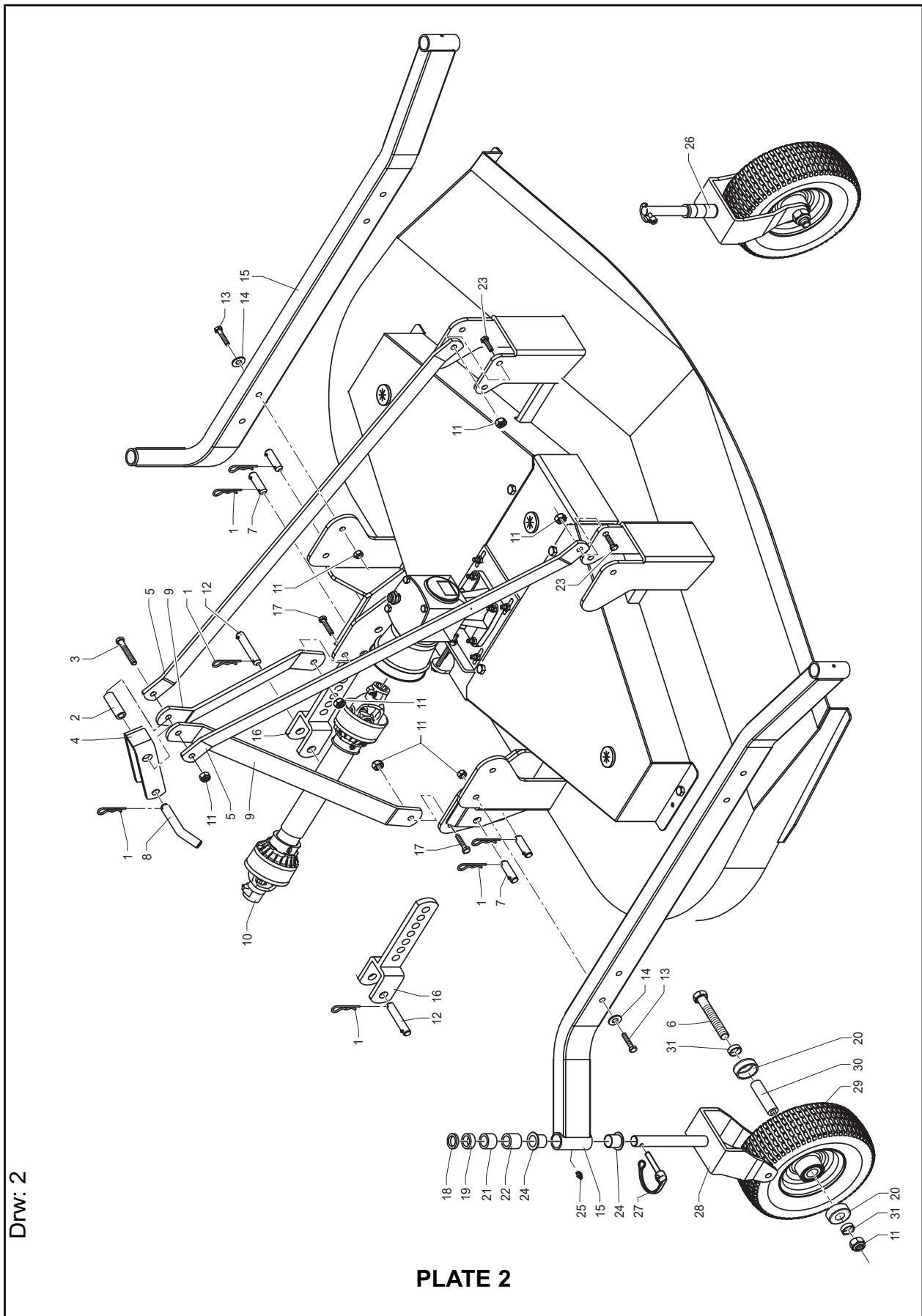


PLATE 1

PARTS LIST - CM MAINFRAME ASSEMBLY - PLATE 1

Item No.	Part No.	Description	Qty.
41	SCA-31312045	Bolt	6
42	SCA-5002708	Pin	1
43	SCA-5782780	Roller	1
44	SCA-5782789	Bearing	2
45	SCA-6330814	Split Pin	1
46	SCA-5002707	Support	1
47	SCA-31510025	Bolt	1
48	SCA-31512040	Bolt	4
49	SCA-34120012	Washer	4
50	SCA-34121012	Washer	4
51	SCA-34102012	Nut	4
52	SCA-34121010	Washer	1
53	SCA-34118010	Washer	1
54	SCA-5812715	Blade (Mulching)	3
55	SCA-5132819	Belt Cover	1

PARTS ILLUSTRATION - CM WHEEL ASSEMBLY - PLATE 2



PARTS LIST - CM WHEEL ASSEMBLY - PLATE 2

Item No.	Part No.	Description	Qty.
1	SCA-6351004	'R' Clip	7
2	SCA-5532719	Bush	2
3	SCA-31314130	Bolt	1
4	SCA-5832732	Bracket	1
5	SCA-5832731	Tie Rod	2
6	SCA-31314170	Bolt	2
7	SCA-5302704	Pin	4
8	SCA-5302706	Pin - 3rd Upper Point	1
9	SCA-5832730	Upper Junction for 3rd Point	2
10	SCA-40071-8136	P.T.O. Shaft	1
11	SCA-34106014	Selt Locking Nut	7
12	SCA-5302705	Pin	2
13	SCA-31314080	Bolt	4
14	SCA-34118014	Washer	4
15	SCA-5002788	Arm	2
16	SCA-5002713	Lower Junction for 3rd Point	2
17	SCA-31514040	Bolt	2
18	SCA-5532725	Spacer - 6mm	4
19	SCA-5532724	Spacer - 12.5mm	4
20	SCA-6600066	Bearing Cover	8
21	SCA-5532722	Spacer - 25mm	4
22	SCA-5532721	Spacer - 32mm	4
23	SCA-31514035	Bolt	2
24	SCA-5782791	Bushing	8
25	SCA-6560008	Grease Nipple	4
26	SCA-5002744	Wheel Kit - Solid Tyre	4
27	SCA-6332056	Lynch Pin	4
28	SCA-5002740	Fork	4
29	SCA-6002740	Solid Wheel	4
30	SCA-5532720	Bushing	4
31	SCA-5532716	Spacer- 25mm	8

PARTS ILLUSTRATION - GEARBOX ASSEMBLY - PLATE 3

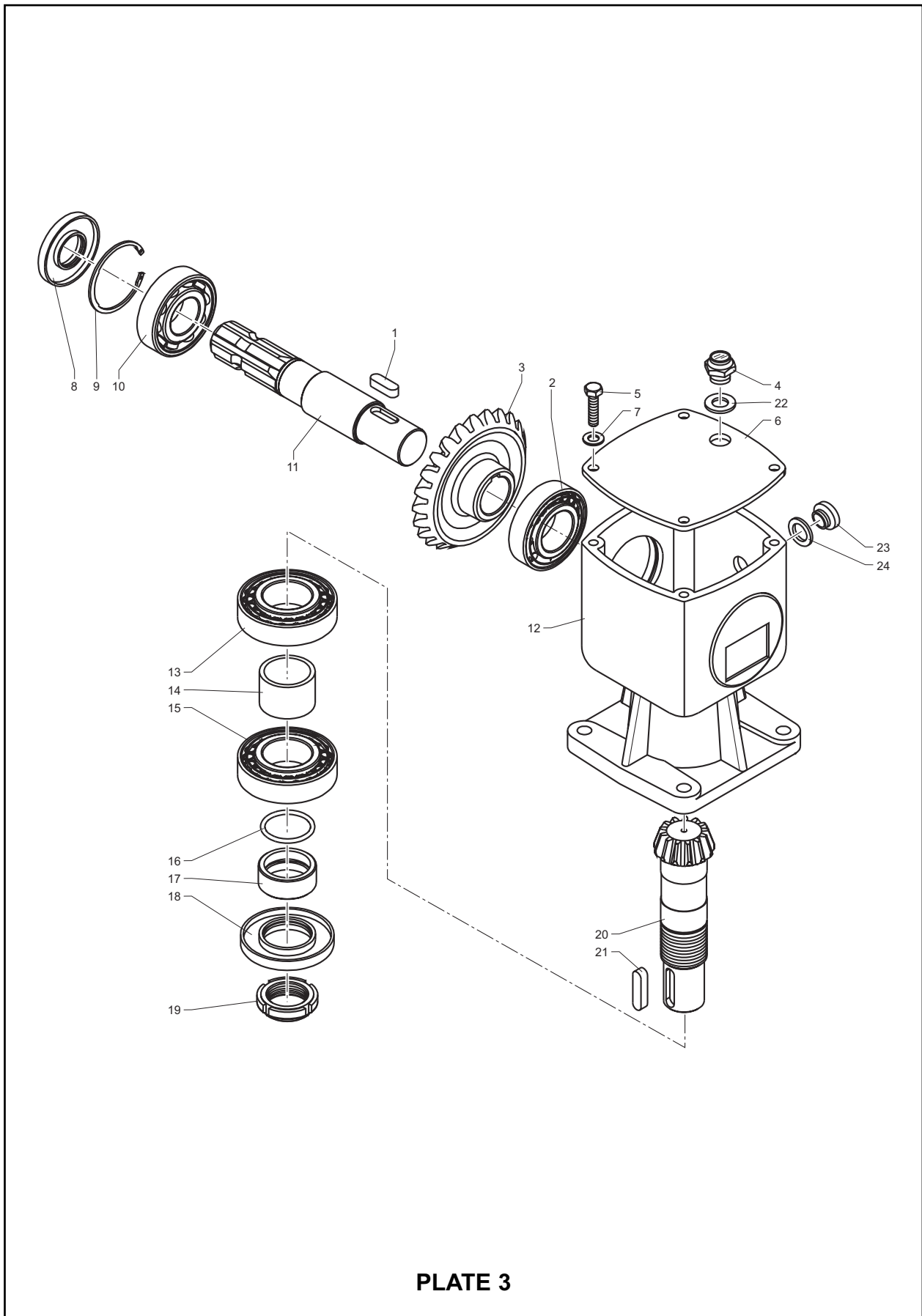


PLATE 3

PARTS LIST - GEARBOX ASSEMBLY - PLATE 3

Item No.	Part No.	Description	Qty.
1	SCA-6361030	Key	1
2	SCA-2730207	Bearing	1
3	SCA-17210-04	Ring Bevel Gear	1
4	SCA-3442018	Plug	1
5	SCA-31508020	Bolt	4
6	SCA-11310-01	Cover	1
7	SCA-3645200008	Washer	4
8	SCA-6203572	Oil Seal	1
9	SCA-6310072	Inner Circlip	1
10	SCA-2106207	Bearing	1
11	SCA-12010-01	Ring Shaft	1
12	SCA-16540-06	Gearbox Case	1
13	SCA-2732008	Bearing	1
14	SCA-15910-02	Spacer	1
15	SCA-2730208	Bearing	1
16	SCA-6800129	'O' Ring	1
17	SCA-15910-01	Spacer	1
18	SCA-6205080	Oil Seal	1
19	SCA-3514201040	Lock-Nut	1
20	SCA-17210-05	Taper Pinion	1
21	SCA-6361040	Key	1
22	SCA-6470117	Washer	1
23	SCA-3444014	Plug	1
24	SCA-6470114	Washer	1

PTO SHAFT OPERATION AND MAINTENANCE

IMPORTANT!

PTO drive shafts must only be used for their intended purpose.

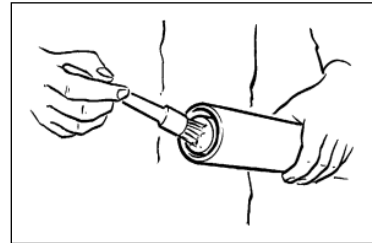
PTO drive shafts are designed for specific machine types and power requirements. They must not be replaced by other models. Ensure that the PTO drive shaft is securely connected.

Only use a completely protected drive system:

PTO drive shaft with complete guard and complementary guard on tractor and implement. A complete guard is essential in all working positions.

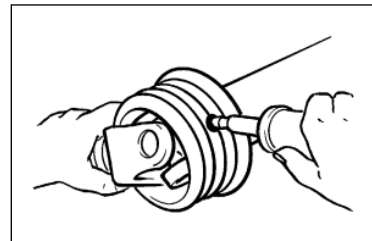
LUBRICATION

Lubricate with quality grease before starting work and every 8 operating hours.



Clean and grease the PTO drive shaft before each prolonged period of non-use.

Grease the guard tubes in winter to prevent freezing.

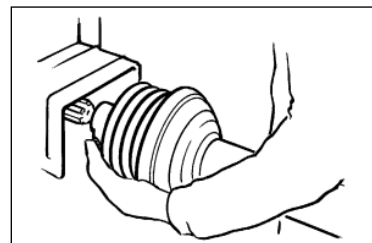


COUPLING THE PTO SHAFT

Clean and grease the PTO and PIN

Q.-d pin

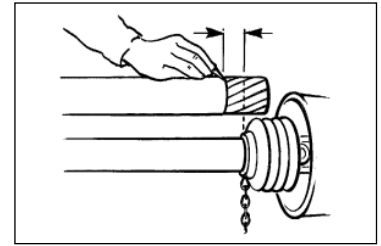
Press q.-d. pin and simultaneously push PTO drive shaft onto PTO until pin engages.



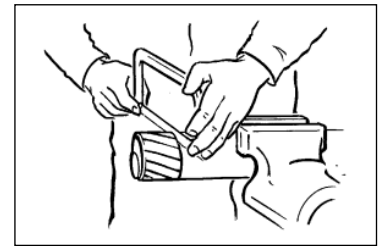
PTO SHAFT OPERATION AND MAINTENANCE

LENGTH ADJUSTMENT

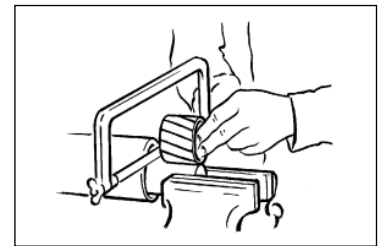
To adjust the length, hold the half-shafts next to each other in the shortest working position and mark them.



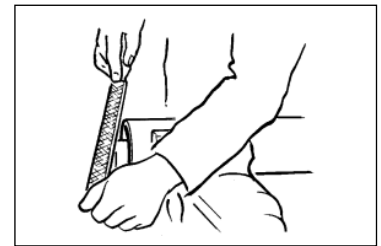
Shorten inner and outer guard tubes equally.



Shorten inner and outer sliding profiles by the same length as the guard tubes.



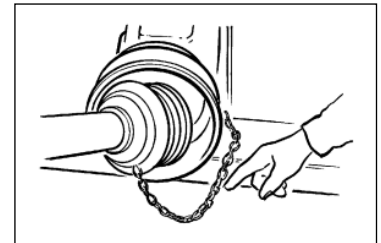
Round off all sharp edges and remove burrs.
Grease sliding profiles.



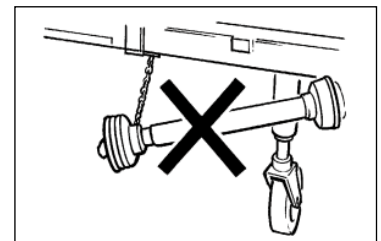
No other changes may be made to the PTO drive shaft and guard.

CHAINS

Chains must be fitted so as to allow sufficient articulation of the shaft in all working positions.



The PTO drive shaft must not be suspended from the chains!



NOTES



Certificate of CE Conformity

Machine Model:

CM210

Description:

FINISHING MOWER

*I hereby certify that the machine detailed hereon
conforms to:*

**European Directives 2008/42/EC
Supply of Machinery Regulations 2008
As amended 91/368EEC – 93/44EEC – 93/68EEC
HSE AIS 33**

Signed:

A handwritten signature in black ink, consisting of a large, stylized 'R' followed by a horizontal line and a small flourish.

.....
Quality Manager

Date:

September 2012

Wessex International

Charlton House, Caxton Place, East Portway Industrial Estate, Andover, Hampshire SP10 3QN
Telephone: 01264 345870 Fax: 01264 345 880

www.wessexintl.com



Wessex International
Charlton House, Caxton Close, East Portway Industrial Estate, Andover Hampshire. SP10 3QN
Telephone: 01264 345870 Fax 01264 345880
e-mail: sales@wessexintl.com

www.wessexintl.com