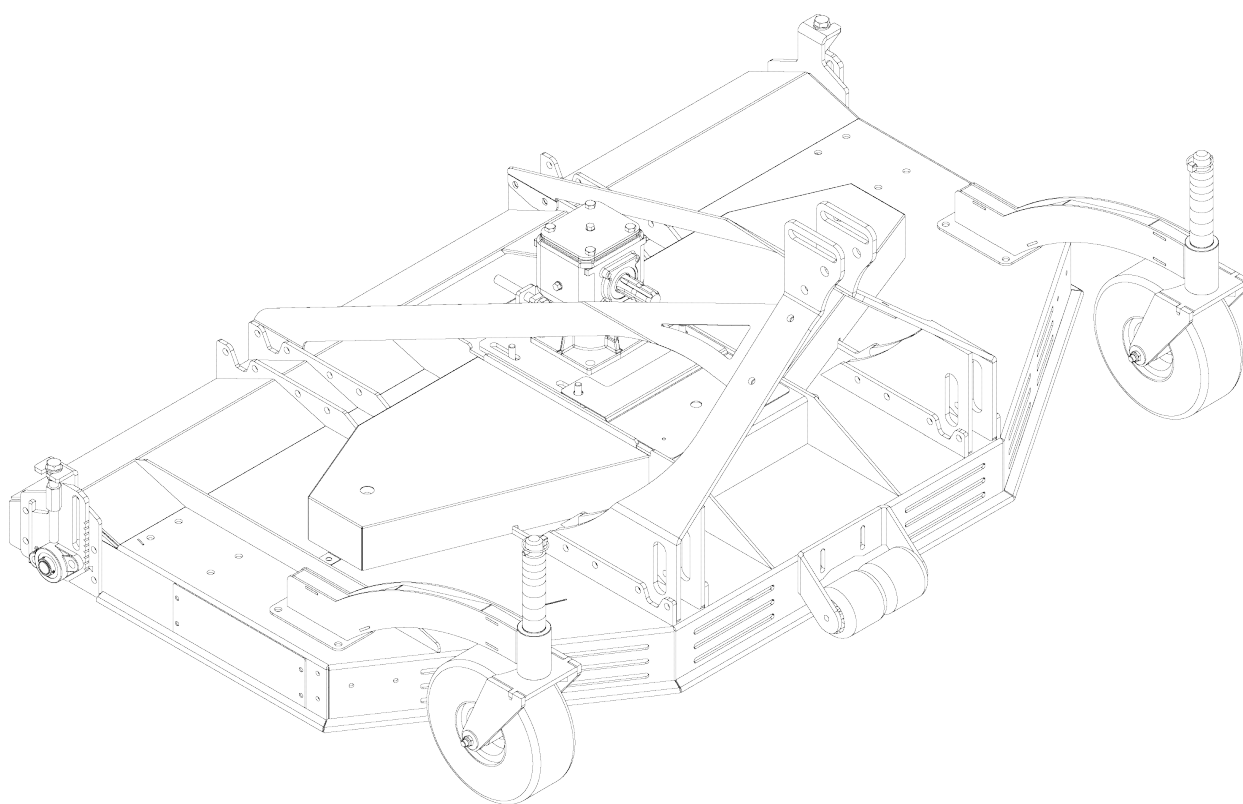




---

# Operation Manual and Parts Book

Wessex CRX150/180/240 Multicut Mowers



Product Code: L2051

---



## CONTENTS

---

Welcome to your new Wessex Product .....	2
Safety Decals .....	3, 4
Important Safety Warnings .....	5
Warranty .....	6
Linking up to the Tractor .....	7
Using the Mower .....	7
Altering the Cutting Height / Maintenance .....	8
Lubrication / Belt Adjustment .....	9
Troubleshooting / Winter Storage .....	10
Cutting Blades / Specifications .....	11
Part Illustration - CRX Mainframe .....	12
Parts List - CRX Mainframe .....	13
Parts Illustration - CRX Drive and Baffles .....	14
Parts List - CRX Drive and Baffles .....	15
Parts Illustration CRX Rollers .....	16
Parts List - CRX Rollers .....	17
Parts Illustration - CRX Wheel Assembly .....	18
Parts List - CRX Wheel Assembly .....	19
Parts Illustration - CRX Spindle and Blade Assembly .....	20
Parts List - CRX Spindle and Blade Assembly .....	21
Parts Illustration - Gearbox .....	22
Parts List - Gearbox .....	23
Parts Illustration - PTO Shaft .....	24
Parts List - PTO Shaft .....	25
PTO Shaft - Operation and Maintenance .....	26, 27
Safety Training Induction .....	28
Daily Inspection Record .....	29
Notes .....	30
CE Certificate .....	31

## **WELCOME TO YOUR NEW WESSEX PRODUCT**

---

Thank you for purchasing a Wessex product. As a Wessex customer, you now number among the most important people of our business and we will endeavour to give you the best service available through our dealer network.

Please read this Manual carefully and familiarise yourself and other persons that will be using the machine with its contents, to ensure the optimum performance and working life of your machine. It is advisable that a copy of this Manual is kept in the workshop and one copy with the machine. Further copies are available through your dealer.

On delivery, your dealer should go through the workings of the machine with you, explaining the setting up procedures, all of which are contained in this manual for further reference. The Warranty Registration Form must also be completed and returned to us **within 7 days of delivery** in order to validate the Warranty.

**PLEASE READ THE FOLLOWING PAGES CAREFULLY BEFORE USING YOUR MACHINE  
AND KEEP THIS MANUAL IN A SAFE PLACE.**

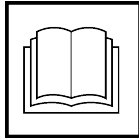


**THIS SAFETY SYMBOL IS TO ALERT OPERATORS OF A HAZARD  
THAT MAY RESULT IN INJURY.  
ALWAYS FOLLOW INSTRUCTIONS CAREFULLY**

## SAFETY DECALS



- GB **ATTENTION** Description of pictograms.  
 F **ATTENTION** Description des pictogrammes.  
 D **VORSICH** Beschreibung der piktogramme.



- GB Read Operating manual before use.  
 F Lisez Manual D'Opération avant l'utilisation.  
 D Vor der Benutzung, Betriebshandbuch lesen.



- GB Ear defenders must be worn.  
 F Défenseurs des oreilles doivent être portés.  
 D Gehörschutz getragen werden.



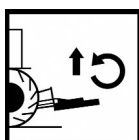
- GB Never remove guards or attempt adjustment until rotor has stopped.  
 F Ne retirez jamais les gardes ou d'ajustement tentative jusqu'à ce que toutes les pièces mobiles ont été interrompus.  
 D Schutzvorrichtung niemals abnehmen oder einstellung versuchen, bevore der rotor abstellt.



- GB Bystanders must be at least 20 metres from machine range of action.  
 F Des spectateurs doivent s'écarter au moins 20 mètres du rayon d'action de la machine.  
 D Umstehenden müssen sich mindestens 20 meter vom maschinenbetriebsraum entfernen.



- GB Stand clear. Flying objects possible.  
 F S'écartez! Possibilité d'objets volants.  
 D Zurückbleiben! Herumfliegende objekte möglich



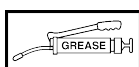
- GB Lift Machine before turning  
 F Levez la machine avant de la tourner  
 D Maschine aufheben, bevor man sie umdreht.



- GB Examine blades regularly. The operator is responsible for machine damage caused by unbalanced rotors.  
 F Examinez des lames régulièrement. L'opérateur est responsable des dommages à la machine provoqués par des rotors mal équilibrés  
 D Klingen regelmäßig kontrollieren. Der abeiter ist an den durch unausgewogenen rotoren maschinenschäden verantwortlich.



- GB Keep hands and feet clear  
 F Garder les mains et les pieds.  
 D Halten Sie Ihre Hände und Füße.



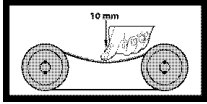
- GB Grease points  
 F Les points de graissage  
 D Grease Punkte.

## SAFETY DECALS

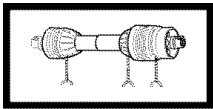
---



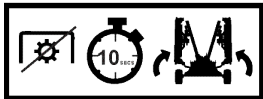
- GB Lifting Point  
F Point de levage  
D Anschlagpunkt



- GB CORRECT BELT TENSION: Check belt tension regularly:  
10mm of belt deflection at thumb pressure between pulleys.  
F TENSIONNEMENT CORRECT DE LA COURROIE : Contrôler le tensionnement régulièrement :  
la déflexion de la courroie sous la pression du pouce entre les deux poulies doit être de 10 mm.  
D KORREKTE RIEMENSPANNUNG: Riemenspannung regelmäßig überprüfen:  
10 mm Eindrücktiefe bei Daumendruck zwischen Riemenscheiben.



- GB Safety Chains must be anchored tightly. Never allow chains to wrap round PTO shaft. Grease PTO shaft regularly.  
F Chaînes de sécurité doit être ancré solidement. Ne laissez jamais les chaînes à entourer le transmission. Régulièrement graisse le transmission.  
D Sicherheitsketten müssen fest verankert sein. Lassen Sie niemals Ketten zu runden Zapfwelle zu wickeln. Fett Gelenkwelle regelmäßig.



- GB When machine is operating with the wings down, please ensure that the tractors hydraulic spool valve is in the float position.  
F Lorsque la machine est en marche avec les ailes vers le bas, s'il vous plaît assurer que le distributeur à tiroir hydraulique des tracteurs est en position flottante.  
D Wenn die Maschine mit Flügeln nach unten läuft, stellen Sie bitte sicher, dass der Schlepperhydraulik Schieberventil in der Schwimmstellung ist.



- GB Disengage the PTO drive and wait for 10 seconds before lifting wings into their latched position.  
F Désengager la prise de force et attendre 10 secondes avant de soulever les ailes dans leur position de verrouillage.  
D Lösen Sie den Zapfwellenantrieb und 10 Sekunden warten, bevor Flügel in ihre Verriegelungsposition anheben.

## IMPORTANT NOTICE

### FITTING PTO SHAFT TO MACHINE & TRACTOR

---

- All safety chains must be anchored tight enough to allow a small amount of movement, but not enough to wrap around the P.T.O. Shaft.
- Ensure that the shaft and guard is regularly greased to avoid overheating and to give lubrication.
- **Important:** Thoroughly read through the manufacturers instruction book before using the P.T.O. Shaft.

**P.T.O.Shafts are not covered by the Wessex Warranty.**

## IMPORTANT SAFETY WARNINGS

---



Wessex machines are guarded for your protection, but you must always observe certain elementary precautions. Machines are potentially **dangerous** and should be used with the greatest respect and **ALL OPERATORS MUST** read this manual and be aware of all safety precautions.

1. **NEVER** attempt any adjustment whatsoever, unless the machine is **COMPLETELY** at a standstill and the P.T.O. drive and blades have stopped turning.
2. **NEVER** attempt to clear any obstructions around the mower unless the machine is **COMPLETELY** at a standstill and the P.T.O. drive and blades have been stopped.
3. **NEVER** remove belt guards unless the machine is **COMPLETELY** at a standstill.
4. **NEVER** remove safety guards which are provided for your protection.
5. **NEVER** operate the mower with people around, keep everybody (especially children and animals) at a safe distance, **minimum 20 metres**.
6. Stand well back from the machine when cutters are spinning.
7. Regularly inspect the **BLADES AND FIXING BOLTS** to ensure that they are in excellent condition. Replace blades **IMMEDIATELY** if any signs of fracture or excess wear becomes apparent. Serious damage, which is excluded from our warranty conditions, may result from using your mower with an unbalanced rotor. When replacing blades, always fit new mounting bolts and nuts to ensure that the rotor is balanced and running smoothly.

### HEALTH AND SAFETY - Noise at Work Regulations

#### READING AT THE OPERATORS EAR

**Wessex CRX Roller mower: Approximately 95 D.B.A**

Depending on conditions and material being cut, this reading may alter, it is therefore advisable for users to do their own assessment.



In compliance with the above regulations, Ear Protectors must be worn when operating machinery.

## WARRANTY

---

Your Wessex product or equipment is warranted free from defect in workmanship or manufacture for one year from date of purchase. Any parts which appear to us to be defective, either in material or workmanship shall be replaced or repaired at no cost to the purchaser, subject to the following conditions:

1. The registration card enclosed with this booklet must be returned to us within seven days of purchase. Alternatively if you prefer, you may register your product via our Website.  
<http://www.wessexintl.com/warranty-registration>
2. Any failure in the machine should be reported in the first instance immediately to your dealer, who will act on your behalf to resolve the matter to your satisfaction.
3. The defective parts will be returned by your dealer to us, accompanied by a full statement describing the failure and the circumstances and conditions in which the failure occurred.
4. The following are specifically excluded from our terms of warranty:
  - a) Fair wear and tear, especially to belts, brushes, blades and bearings.
  - b) Damage caused through incorrect adjustment (see instructions).
  - c) Damage caused by neglect or lack of lubrication.
  - d) Damage caused by misuse or abuse, including impact damage to blades.
  - e) Damage caused whilst the machine is in transit.
  - f) Damage caused to the frame of the machine by running the machine with unbalanced rotors, blades or spinners.
  - g) Damage caused to the machine by use with loose nuts, bolts, screws or any other type of fittings.
5. The warranty is for the benefit of the first user only.
6. Wessex International decisions will be final and binding.

**Note:**

**It is recommended that every machine is inspected after one hour of operation to check that all nuts, bolts, screws or any other types of fixings are tight and any loose fixings or components should be rectified as appropriate.**

**Further inspections should be carried out at regular intervals thereafter.**



## LINKING UP TO THE TRACTOR

---

1. Reverse your tractor up to the machine and connect the lower links, left hand first to the link pins on the machine, securing with lynchpins. Adjust the right hand tractor lift arm to ensure that the mower is level from side to side.
2. Connect the top link. The top link pin must be situated in the hole for transport, but in the slot when mowing as this will allow the machine to follow the ground contours well.
3. Connect the P.T.O. shaft ensuring that the shaft is not too long for the tractor. If necessary, the P.T.O. shaft may need to be shortened, (see instructions on pages 12 and 13). Always hook the P.T.O. chains onto the lugs provided and shorten the chains to suit. The P.T.O. chains must not encircle the P.T.O. guard, as this will cause premature P.T.O. guard damage and wear.
4. Tighten tractor check chains to prevent sideways movement of the mower.
5. **Ensure that the top link pin is in the centre of the slot on level ground for mowing and in the hole for transport.**

## USING THE MOWER

---

Having linked your CRX mower up to the tractor and connected up the P.T.O. shaft, ensure that the mower is not too heavy for the tractor, if so you may need to fit front weights to the tractor.

Ensure that there are no bystanders within 20 metres before starting the mower up.

Never use the mower in P.T.O. speeds in excess of 540 R.P.M.

Ensure that there are no objects underneath the mower deck and that there are no bystanders within 20 metres around the mower before starting the mower up especially children and animals.

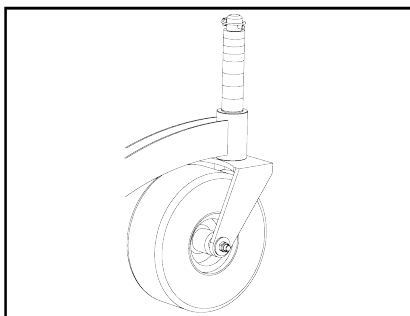
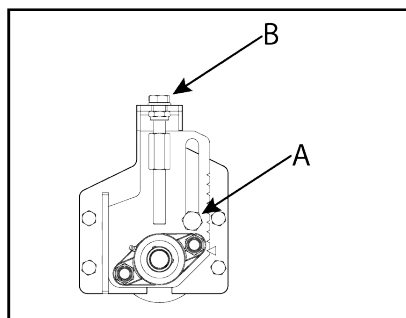
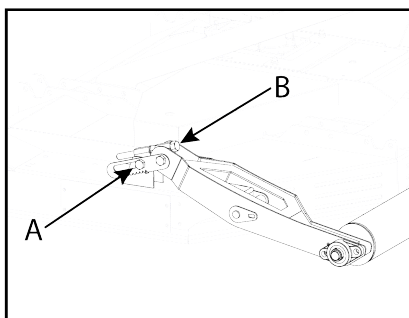
Having set the CRX mower up in accordance with the above instructions engage the P.T.O. and select a low forward speed and gently move forward. You will establish the optimum forward speed for your conditions by experience, but on regularly maintained grass you will achieve a good finish at 5-6 M.P.H.

When mowing always put the top link pin in the slot so that the mower will follow the ground contours well, and always put the pin into the hole for road transport.

## ALTERING THE CUTTING HEIGHT (Rollers)

---

1. Lift the mower slightly off the ground on the hydraulic linkage and switch off the tractor.
2. Loosen, but do not remove the fixing bolts **(A)**. There are two each side of the main deck.
3. Turn the adjusting screws **(B)** clockwise to lower the rollers, thus increasing the cutting height, or anticlockwise to raise the rollers, thus reducing the height of cut. Ensure that all screws are adjusted by the same amount otherwise the cut will be uneven. There is a triangular marker on the adjuster to assist in checking for even adjustment.
4. Tighten all fixing bolts.
5. Re-adjust the top link so that then the machine is on level ground the pin is in the centre of the slot.



To adjust the cutting height when wheels are fitted. Remove the Linch pin at the top of the wheel stem and move the spacers from above to below the wheel arm. The more spacers that are below the arm, the higher the cut. There are two sizes of spacer 12.5mm and 25mm, these correspond to the triangular markers on the roller adjustment, which are at 25mm spacings.

## BELT ADJUSTMENT

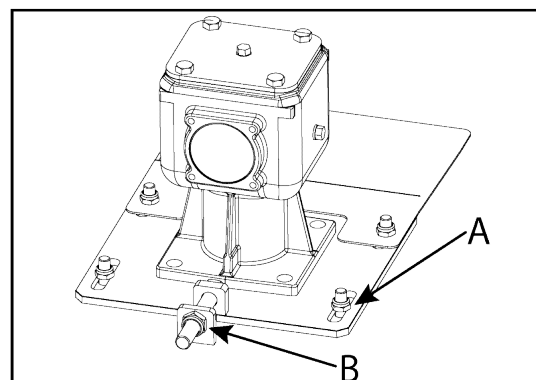
---

The drive belts are adjusted by moving the gearbox on its mounting bracket in relation to the mower deck.

First, stop the tractor engine and remove the starting key. Second, slacken the four holding bolts **(A)** on the base of the gearbox-mounting bracket. To tighten belts, turn the rear adjusting nut **(B)** anticlockwise, and to slacken the belts, turn clockwise.

The belts should be free to move about 12 mm under finger pressure. If they are too tight, there will be undue stress on the driven parts.

When belts are adjusted correctly, lock the adjusting nut in place, and tighten the gearbox holding bolts. Both drive belts are tightened equally.



## MAINTENANCE

---

To keep your CRX Roller Mower in excellent working condition we recommend that you follow this maintenance programme:-

### REGULARLY:-

- Lubricate your CRX as indicated in this manual.
- Check all drive belts for tension and replace if cut, frayed or worn.
- Inspect all blades regularly and replace any that are badly worn, chipped or broken which may cause an imbalance in the blade rotor assembly.
- DO NOT RUN MACHINE WITH UNBALANCED ROTORS THIS WILL CAUSE DAMAGE (NOT COVERED BY WARRANTY).
- Inspect front and rear rollers and scraper wires.
- Regularly clean all debris from under the belt covers.

At the end of the grass cutting season always clean the CRX thoroughly and grease before winter storage.

Only use genuine Wessex parts in the event of replacing worn parts. This will ensure the continued safe use of your CRX Roller Mower and the validity of your warranty.

## LUBRICATION

---

### DAILY:-

- Grease Roller bearings.
- Inspect Blades

### WEEKLY:-

- Grease height adjustment points.
- Check Gearbox oil level.
- Lubricate all adjusting threads.
- Grease Cutter Spindle bearings.
- Grease P.T.O. Shaft bearings.
- Grease P.T.O. Tube slides.

## TROUBLESHOOTING

---

FAULT	CAUSE	REMEDY
Leaving wheel track uncut	1. Forward speed too fast 2. Cutting height too high	Reduce forward speed Lower cutting height
Bad quality of cut	1. Forward speed too fast 2. Excessive blade wear 3. Belts slipping	Reduce forward speed Replace blades Tighten belts
Narrow strip uncut	1. Possibly missing or broken blade	Inspect blades and replace as necessary
Excessive vibration	1. Damaged or missing blades 2. Main spindle bearing failed 3. Loose part	Inspect and replace blades Inspect bearing, replace if damaged Check all nuts and bolts are tight
Excessive scalping	1. Cutting height too low	Raise cutting height.

## WINTER STORAGE

---

Before winter storage, the CRX Roller Mower should be thoroughly inspected:-

- Repair or replace any worn or broken parts.
- Check oil level in the gearbox. Top up or change with EP90 gear oil depending on hours of operation.
- Take special care to look at the blades, rotor and the bearings.
- Remove the belts and ensure that the rotor is free-spinning.
- Make sure that the belts are in good condition before re-fitting.
- Thoroughly wash the machine to remove all oil, grease, debris and materials.
- Grease all grease points before storage to avoid any corrosion.
- After pressure washing always run mower for a time to expel any water from bearings.
- It is recommended to apply a light oil to the under-deck surfaces to protect the machine from corrosion while in storage.

## CUTTING BLADES

---

- Inspect the Cutting blades regularly.
- Badly worn or broken blades will unbalance rotors causing vibration.
- **Do not use with unbalanced rotors.**
- Always replace blades on both ends of bars to avoid imbalance.
- Always lift machine and prop the machine up with axle stands. Never get underneath an unsupported machine.
- Replace blade tips using new nylock locking nuts every time.

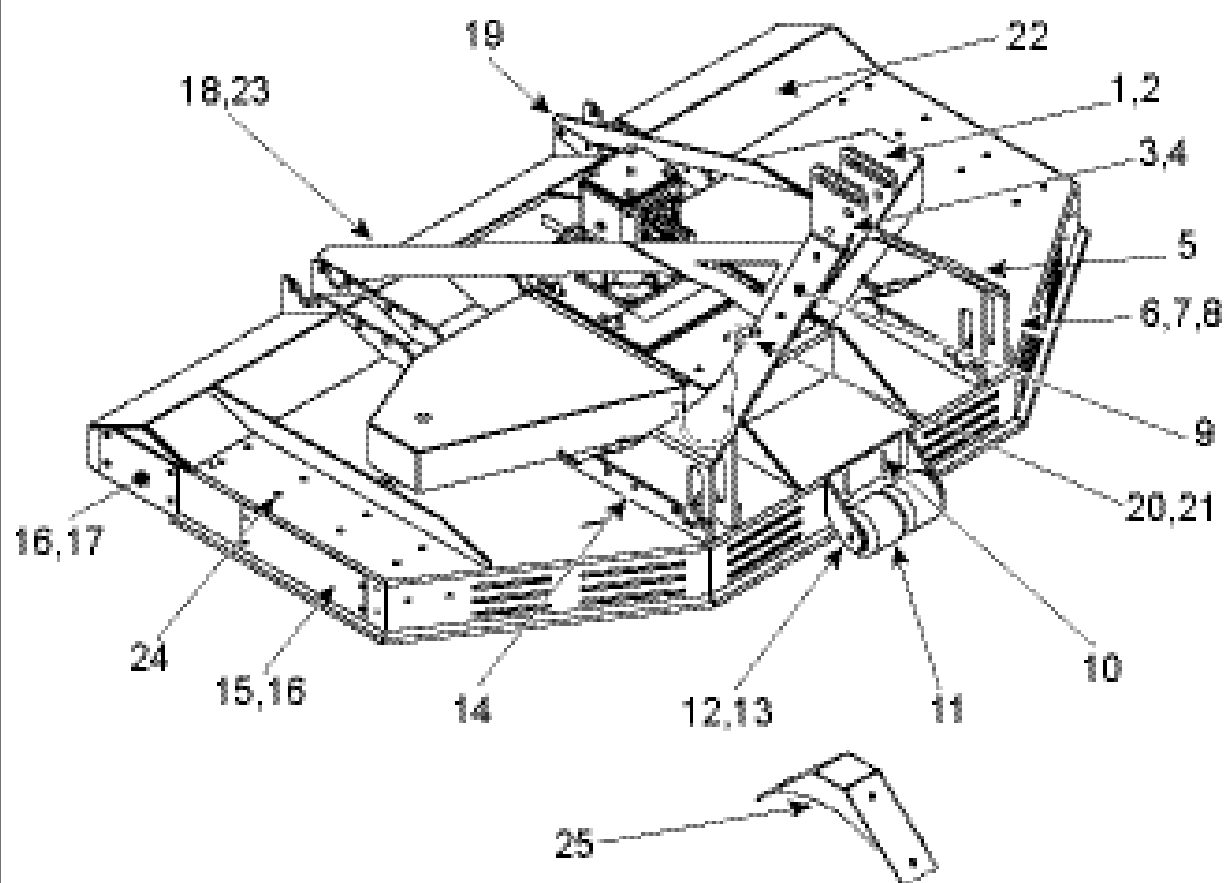
## SPECIFICATIONS

---

### Wessex Proline CRX Multicut Mowers

Model:	CRX 150	CRX 180	CRX 240
Cutting Width:	1.5m	1.8m	2.4m
Overall Width:	1.65m	1.97m	2.57m
Overall Length: (Rollers)	1.33m	1.37m	1.62m
Overall Length: (Combination)	1.20m	1.27m	1.52m
Overall Length: (4 Wheels)	1.66m	1.74m	1.99m
Weight:	266kg	295kg	365kg
Cutting Height Range (Rollers):	10-110mm	10-110mm	10-110mm
Cutting Height Range (Wheels):	10-150mm	10-150mm	10-150mm
No. of Cutting Spindles:	3 (6 blades)	3 (6 blades)	3 (6 blades)
Gearbox Oil:	EP90	EP90	EP90

PLATE 1



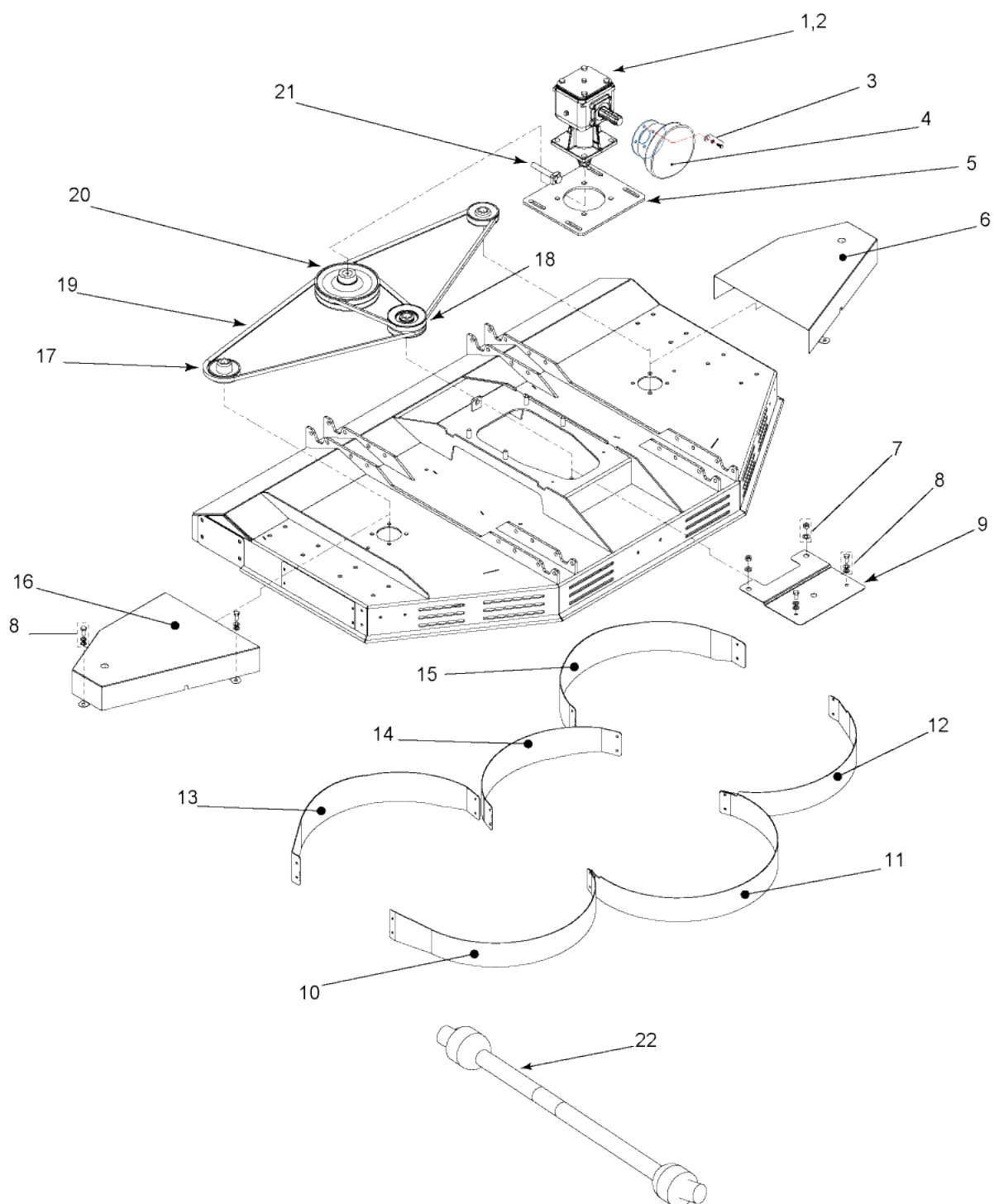
## PARTS LIST - CRX MAINFRAME

Item No.	CRX150 Part No.	CRX180 Part No.	CRX240 Part No.	Description	QTY
1	WX-0426	WX-0426	WX-0426	Top Link Pin	1
2	WX-0127	WX-0127	WX-0127	Linch Pin	1
3	WX-34680	WX-34680	WX-34680	Linkage Tube	1
4	WX-1001	WX-1001	WX-1001	Fastening Set	1
5	WX-19579	WX-19579	WX-19579	A Frame - Left Hand	1
6	WX-2326	WX-2326	WX-2326	Lower Link Pin	1
7	WX-1328	WX-1328	WX-1328	Bottom Link Bush	4
8	WX-0227	WX-0227	WX-0227	Linch Pin	2
9	WX-19679	WX-19679	WX-19679	A Frame - Right Hand	1
10	WX-5203	WX-5203	WX-5203	Roller Bracket Fastening Set	1
11	WX-6452	WX-6452	WX-6452	Anti Scalp Roller	2
12	WX-10455	WX-10455	WX-10455	Anti Scalp Roller Bracket	1
13	WX-15503	WX-15503	WX-15503	Anti Scalp Roller Bolt	1
14	WX-16403	WX-16403	WX-16403	Fastening Set	12
15	WX-32776	WX-25676	WX-34076	Side Discharge Blanking Plate	1
16	WX-4401	WX-4401	WX-4401	Fastening Set (4 Bolts)	3
17	WX-27076	WX-27076	WX-27076	Roller Blanking Plate	2
18	WX-20879	WX-19879	WX-20979	A Frame Brace - Right Hand	1
19	WX-20579	WX-18779	WX-21279	A Frame Brace - Left Hand	1
20	WX-0229	WX-0229	WX-0229	Shackle	1
21	WX-9280	WX-9280	WX-9280	PTO Holder	1
22	WX-20279	WX-18179	WX-20479	Mainframe	1
23	WX-3503	WX-3503	WX-3503	Fastening Set	2
24	WX-AP1007	WX-AP1007	WX-AP1007	Blanking Plug	16



## PARTS ILLUSTRATION - CRX DRIVE AND BAFFLES

### PLATE 2

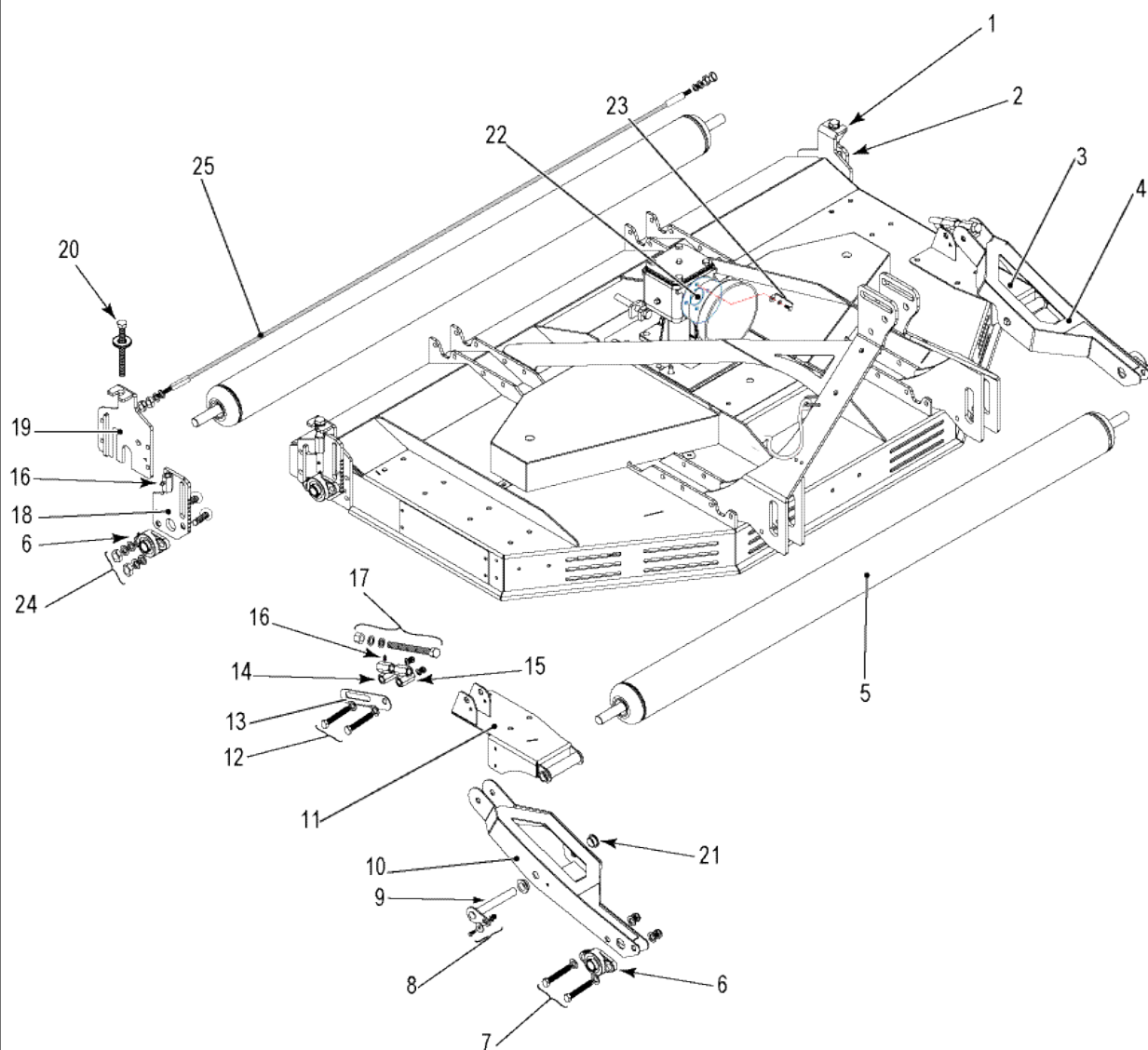




## PARTS LIST - CRX DRIVE AND BAFFLES

Item No.	CRX150 Part No.	CRX180 Part No.	CRX240 Part No.	Description	QTY
1	WX-5257	WX-5257	WX-5257	Gearbox CR/CRX	1
1	WX-15857	WX-15857	WX-15857	Gearbox Front Mount (1000 R.P.M.)	1
1	WX-15957	WX-15957	WX-15957	Gearbox Front Mount (540 R.P.M.)	1
2	WX-0547	WX-0547	WX-0547	Key	1
3	WX-5103	WX-5103	WX-5103	Fastening Set	1
4	WX-5177	WX-5177	WX-5177	Bucket Guard	1
5	WX-27976	WX-27976	WX-27976	Gearbox Adjuster Plate	1
6	WX-18777	WX-18477	WX-18977	Belt Guard - Left Hand	1
7	WX-4603	WX-4603	WX-4603	Fastening Set	2
8	WX-16503	WX-16503	WX-16503	Fastening Set	8
9	WX-18877	WX-27876	WX-19177	Gearbox Bracket Cover	1
10	WX-33176	WX-27476	WX-33776	Rear Discharge - Baffle 1	1
11	WX-33276	WX-27576	WX-33876	Rear Discharge - Baffle 2	1
12	WX-33376	WX-27676	WX-33976	Rear Discharge - Baffle 3	1
13	WX-32876	WX-27176	WX-33476	Side Discharge - Baffle 1	1
14	WX-32976	WX-27276	WX-33576	Side Discharge - Baffle 2	1
15	WX-33076	WX-27376	WX-33676	Side Discharge - Baffle 3	1
16	WX-18677	WX-18377	WX-19077	Belt Guard - Right Hand	1
17	WX-4262	WX-4262	WX-4062	Single Row Pulley	2
18	WX-4362	WX-4362	WX-4162	Double Pulley	1
19	WX-2434	WX-1034	WX-4034	Drive Belt	2
20	WX-3962	WX-3962	WX-3962	Gearbox Pulley CR/CRX	1
21	WX-1257	WX-1257	WX-1257	Adjuster	1
22	WX-5681	WX-5681	WX-5681	PTO Shaft	1

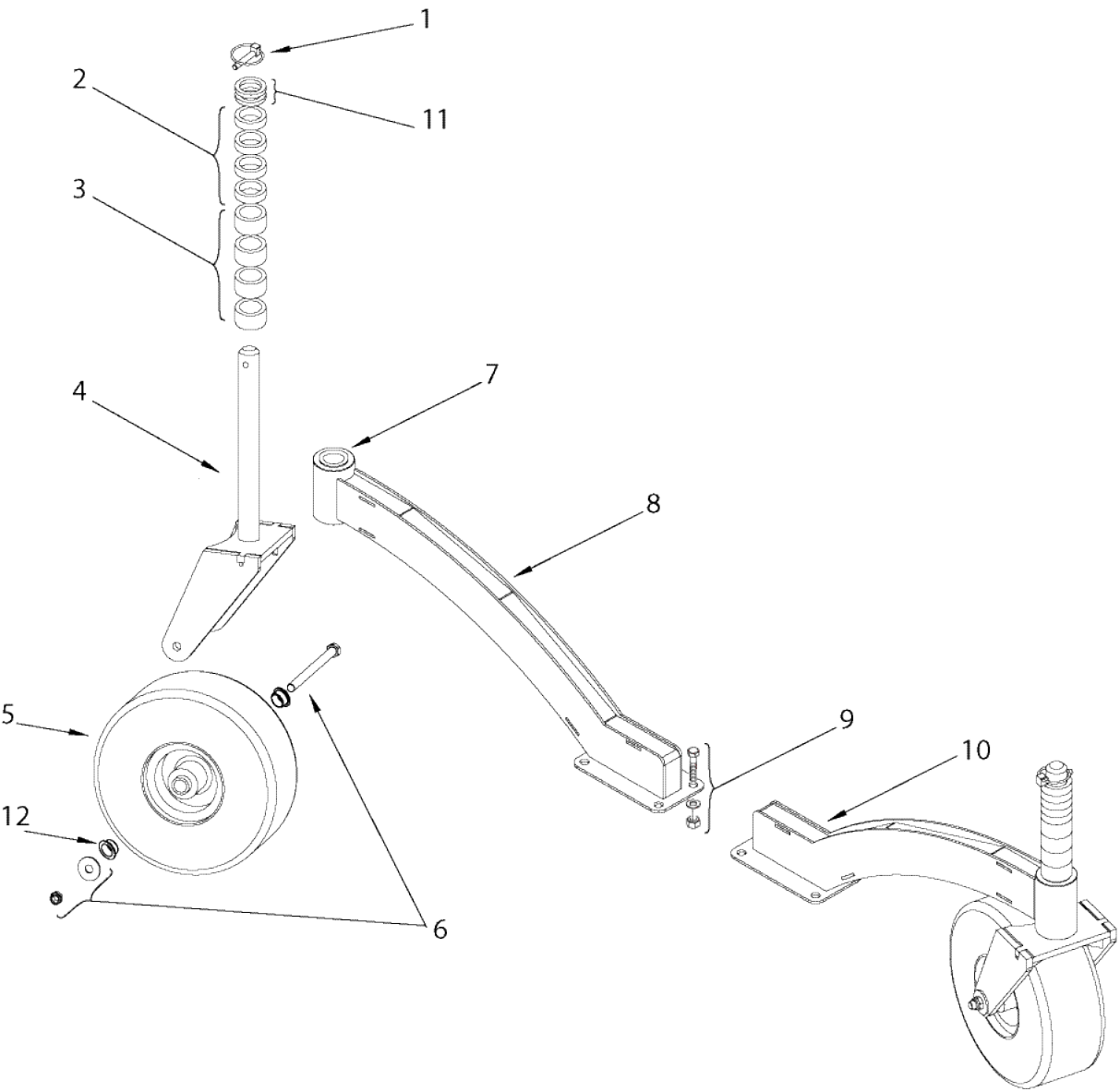
PLATE 3



## PARTS LIST - CRX ROLLERS

Item No.	CRX150 Part No.	CRX180 Part No.	CRX240 Part No.	Description	QTY
1	WX-8055	WX-8055	WX-8055	Rear Roller Fixed Plate - Left Hand	1
2	WX-8155	WX-8155	WX-8155	Rear Roller Sliding Plate - Left Hand	1
3	WX-10555	WX-9455	WX-10755	Front Roller Base - Left Hand	1
4	WX-8355	WX-8355	WX-8355	Front Roller Arm - Left Hand	1
5	WX-10155	WX-10255	WX-10355	Roller	2
6	WX-0541	WX-0541	WX-0541	Bearing Unit	4
7	WX-6501	WX-6501	WX-6501	Bearing Fastening Set	2
8	WX-1003	WX-1003	WX-1003	Front Roller Pin Fastening Set	2
9	WX-10628	WX-10628	WX-10628	Front Roller Pin	2
10	WX-8455	WX-8455	WX-8455	Front Roller Arm - Right Hand	1
11	WX-10655	WX-9555	WX-10855	Front Roller Base - Right Hand	1
12	WX-16703	WX-16703	WX-16703	Front Roller Guage Fastening Set	2
13	WX-8655	WX-8655	WX-8655	Front Roller Guage	2
14	WX-8555	WX-8555	WX-8555	Front Roller Adjuster Nut	2
15	WX-10955	WX-10955	WX-10955	Front Roller Adjuster Nut No Thread	2
16	WX-0246	WX-0246	WX-0246	Grease Nipple	4
17	WX-16803	WX-16803	WX-16803	CRX Front Roller Adjuster Bolt	2
18	WX-7755	WX-7755	WX-7755	Rear Roller Sliding Plate - Right Hand	1
19	WX-7655	WX-7655	WX-7655	Rear Roller Fixed Plate - Right Hand	1
20	WX-16603	WX-16603	WX-16603	CRX Rear Roller Adjuster Bolt	2
21	WX-10028	WX-10028	WX-10028	Bush	4
22	WX-5177	WX-5177	WX-5177	Cone Guard	1
23	WX-5103	WX-5103	WX-5103	Cone Guard Fastening Set	1
24	WX-6501	WX-6501	WX-6501	Bearing Fastening Set	2
25	WX-8730	WX-8830	WX-8930	Roller Scraper Cable	1

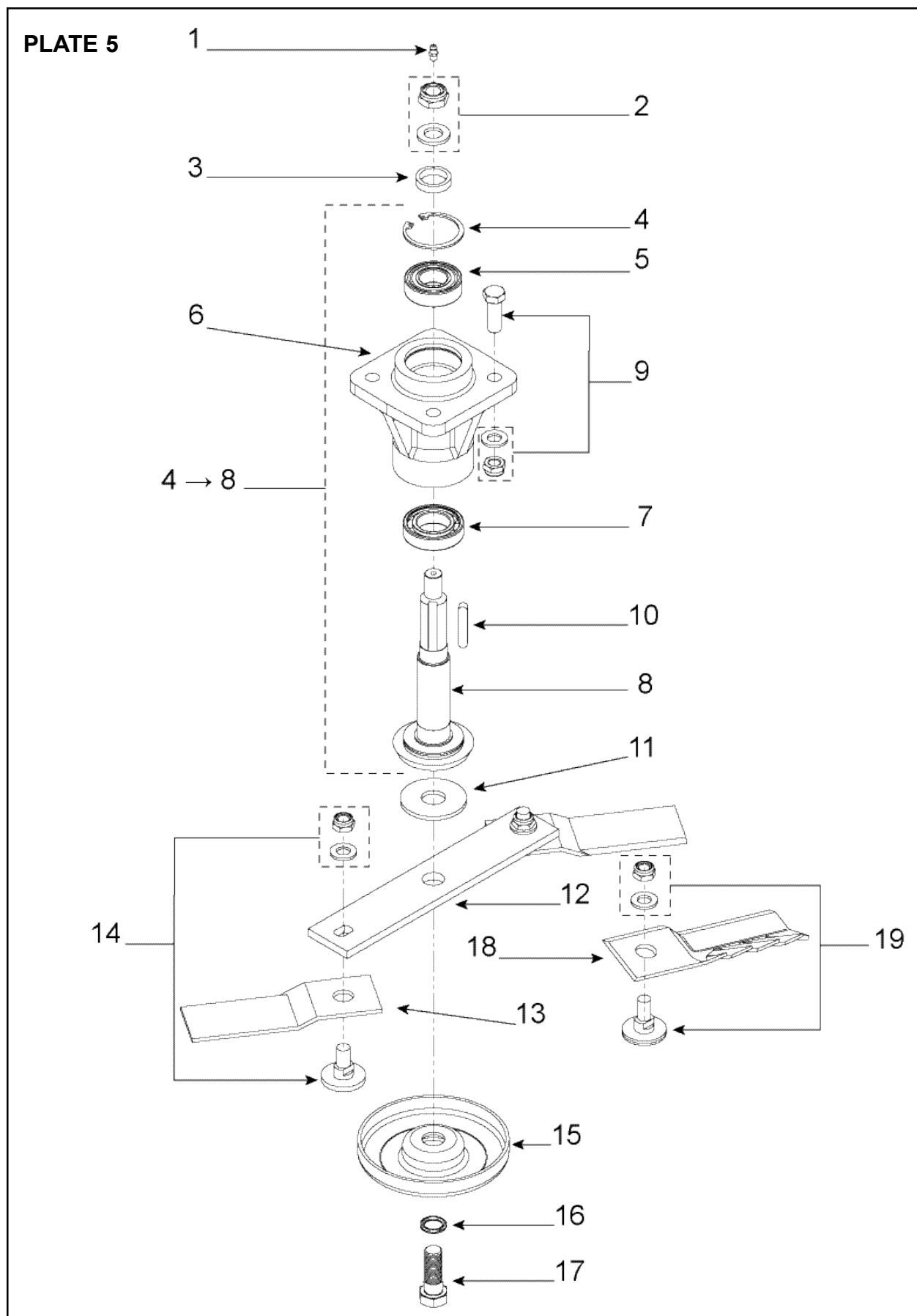
PLATE 4



## PARTS LIST - CRX WHEEL ASSEMBLY

Item No.	CRX150 Part No.	CRX180 Part No.	CRX240 Part No.	Description	QTY
1	WX-0627	WX-0627	WX-0627	Linch Pin	4
2	WX-18051	WX-18051	WX-18051	12.5mm Spacer	16
3	WX-17851	WX-17851	WX-17851	25mm Spacer	16
4	WX-1550	WX-1550	WX-1550	Wheel Fork	4
5	WX-4652	WX-4652	WX-4652	Wheel	4
6	WX-16103	WX-16103	WX-16103	Wheel Fastening Set	4
7	WX-31880	WX-31880	WX-31880	Bush	8
8	WX-17251	WX-17251	WX-17251	Rear Wheel Arm	2
9	WX-3503	WX-3503	WX-3503	Fastening Set (4 Bolts)	4
10	WX-17051	WX-17051	WX-17051	Front Wheel Arm	2
11	WX-18551	WX-18551	WX-18551	6.25 mm Spacer	8
12	WX-18151	WX-18151	WX-18151	Wheel Spacer	8
N/S	WX-14278	WX-14078	WX-14178	Trailing Skirt	1
N/S	WX-15258	WX-14858	WX-15158	Angled Skirt Bracket	1
N/S	WX-34876	WX-34376	WX-34776	Skirt Clamp Bracket	2

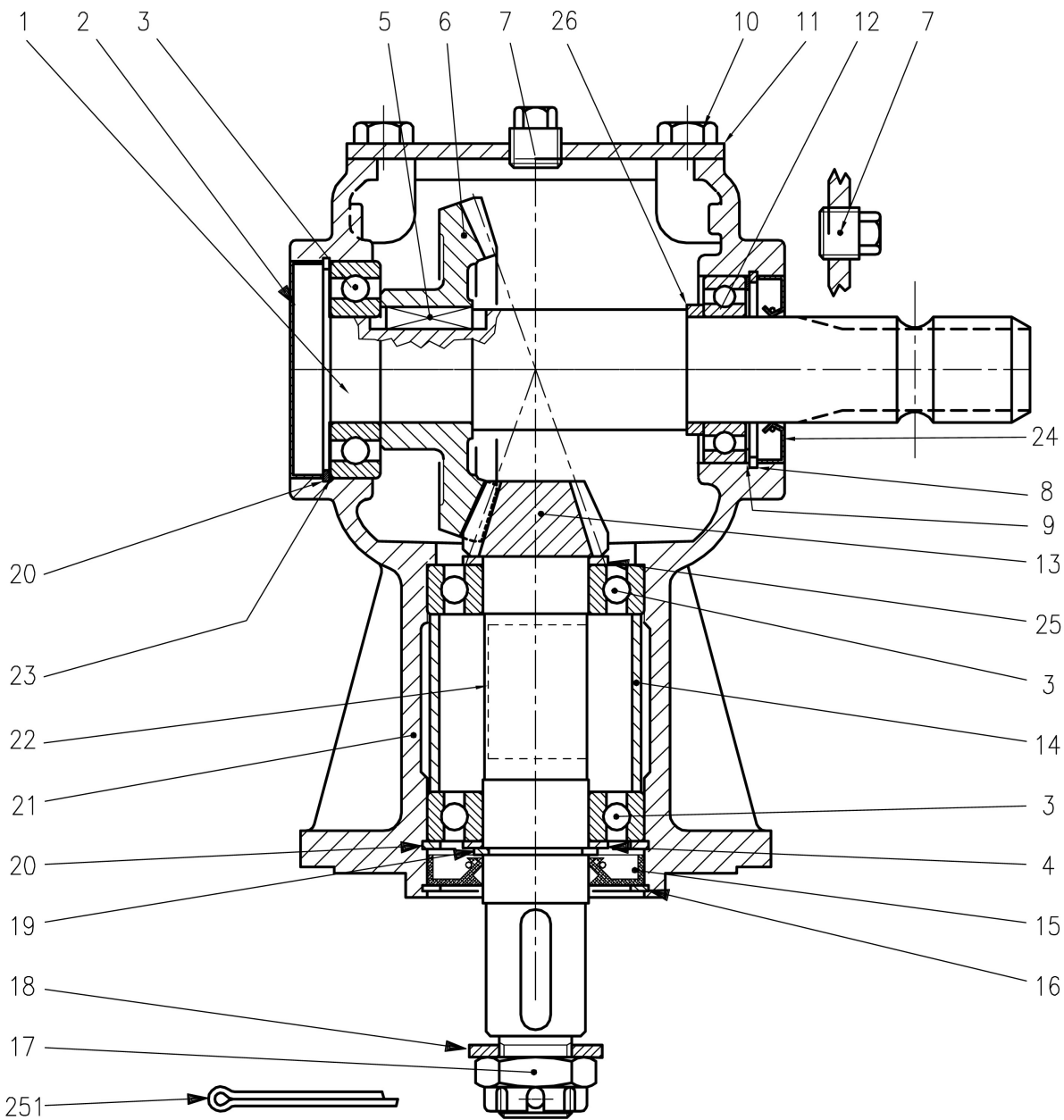
## PARTS ILLUSTRATION - CRX SPINDLE & BLADE ASSEMBLY



## PARTS LIST - CRX SPINDLE & BLADE ASSEMBLY

Item No.	CRX150 Part No.	CRX180 Part No.	CRX240 Part No.	Description	QTY
1	WX-0246	WX-0246	WX-0246	Grease Nipple	1
2	WX-5303	WX-5303	WX-5303	Pulley Fastening Set	1
3	WX-18166	WX-18166	WX-18166	Pulley Spacer	1
4	WX-1722	WX-1722	WX-1722	Circlip	1
5	WX-0838	WX-0838	WX-0838	Bearing	1
6	WX-5966	WX-5966	WX-5966	Spindle Bearing Housing	1
7	WX-0938	WX-0938	WX-0938	Bearing	1
8	WX-6066	WX-6066	WX-6066	Cutter Spindle	1
4-8	WX-5966B	WX-5966B	WX-5966B	Spindle Assembly	1
9	WX-3503	WX-3503	WX-3503	Housing Fastening Set	1
10	WX-0147	WX-0147	WX-0147	Key	1
11	WX-0220	WX-0220	WX-0220	Fibre Washer	1
12	WX-11170	WX-7270	WX-9170	Blade Bar	1
13	WX-11370	WX-11370	WX-11370	Standard Blade Tip	2
14	WX-1739	WX-1739	WX-1739	Standard Blade Bolt	2
15	WX-11270	WX-7470	WX-7470	Anti-Scalp Boss	1
16	WX-3525	WX-3525	WX-3525	Disc Spring	1
17	WX-2339	WX-2339	WX-2339	Blade Bar Bolt	1
18	WX-11470	WX-11470	WX-11470	Mulching Blade Tip	2
19	WX-3039	WX-3039	WX-3039	Mulching Blade Bolt	2

PLATE 6

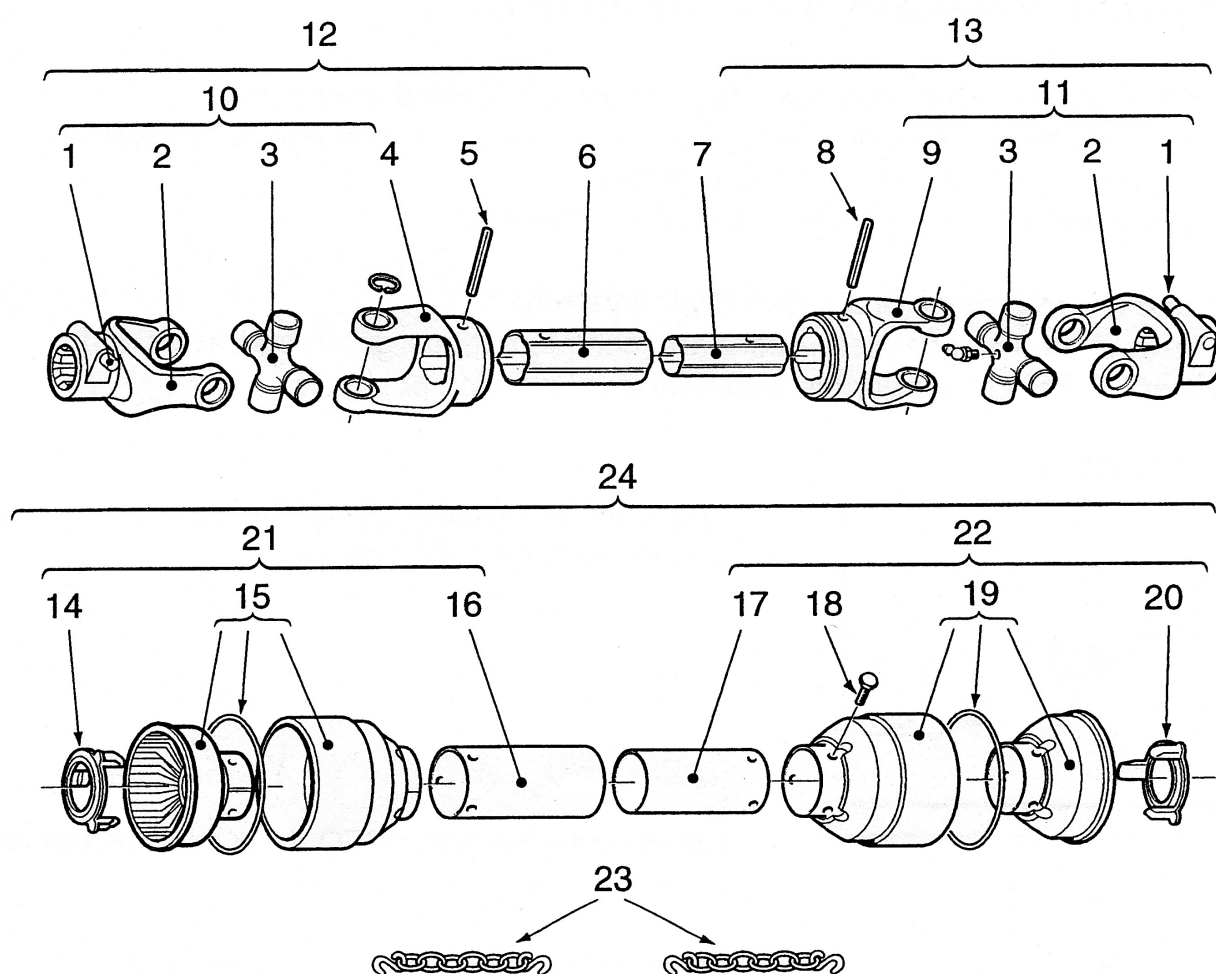




**PARTS LIST - CRX GEARBOX PART No. WX-5257**

Item No.	Part No.	Description	QTY
1	GXS-0.141.2100.00	Input Shaft	1
2	GXS-8.7.0.00744	Oil Cap	1
3	GXS-8.0.1.00870	Bearing	3
4	GXS-0.259.7500.00	Shim Kit	1
5	GXS-8.4.1.00993	Key	1
6	GXS-0.133.5000.00	Crown Gear Z34	1
7	GXS-8.6.5.00006	Plug	2
8	GXS-8.5.2.00648	Snap Ring	1
9	GXS-0.113.7500.00	Shim Kit	1
10	GXS-8.1.1.00054	Bolt	4
11	GXS-0.205.1300.00	Cover	1
12	GXS-8.0.1.00000	Ball Bearing	1
13	GXS-0.141.6002.00	Output Shaft	1
14	GXS-0.141.7100.00	Spacer	1
15	GXS-8.7.1.00152	Double Lip Seal	1
16	GXS-8.5.3.00915	Snap Ring	1
17	GXS-8.2.2.01144	Castle Nut	1
18	GXS-8.3.2.00409	Flat Washer	1
19	GXS-8.5.1.00005	Snap Ring (For Shaft)	1
20	GXS-8.5.2.00131	Snap Ring (For Holes)	2
21	GXS-0.211.0300.00	Casing	1
22	GXS-0.124.7135.00	Plate	1
23	GXS-0.248.7500.00	Shim Kit	1
24	GXS-8.7.3.01259	Oil Seal	1
25	GXS-0.259.7500.00	Shim Kit	1
26	GXS-0.211.7100.00	Spacer	1

PLATE 7



**PARTS ILLUSTRATION / PARTS LIST - PTO SHAFT - PART No. WX-2481**

<b>Item No.</b>	<b>Part No.</b>	<b>Description</b>	<b>QTY</b>
1	PTO-1.08.25	Push Pin Set	2
2	PTO-2.05.07	Push Pin Yoke	2
3	PTO-2.41	Cross Journal Set	2
4	PTO-2.06	Outer Yoke	1
5	PTO-1.12	Pin-Outer Tube	1
6	PTO-2.03.10	Outer Tube	1
7	PTO-2.04.10	Inner Tube	1
8	PTO-4.13	Pin-Inner Tube	1
9	PTO-2.07	Inner Yoke	1
10	PTO-2.01	U Joint-Outer	1
11	PTO-2.02	U Joint-Inner	1
12	PTO-022.501	Half Female Shaft	1
13	PTO-022.500	Half Male Shaft	1
14	PTO-012.007	Collar (Female Shield)	1
15	PTO-012.013	Cone (Female Shield)	1
16	PTO-121.108	Outer Shield	1
17	PTO-121.208	Inner Shield	1
18	PTO-000.019	Bolt	6
19	PTO-016.025	Cone (Male Shield)	1
20	PTO-012.006	Collar (Male Shield)	1
21	PTO-2.08.1F	Half Female Shield	1
22	PTO-2.08.1M	Half Male Shield	1
23	PTO-1.76.01	Safety Chain	2
24	PTO-2.08.F	Complete Shield	1

## PTO SHAFT OPERATION AND MAINTENANCE

---

### IMPORTANT!

**P.T.O. drive shafts must only be used for their intended purpose.**

P.T.O. drive shafts are designed for specific machine types and power requirements.

They must not be replaced by other models.

Ensure that the P.T.O. drive shaft is securely connected.

**Only use a completely protected drive system:**

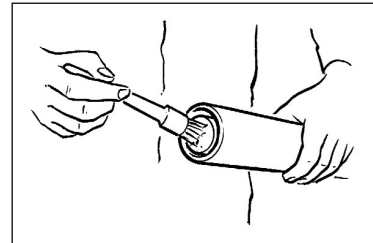
P.T.O. drive shaft with complete guard and complementary guard on tractor and implement. A complete guard is essential in all working positions.

## LUBRICATION

---

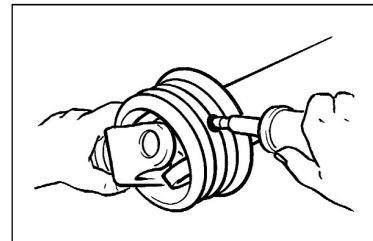
Lubricate with quality grease before starting work and every 40 operating hours.

Ensure the P.T.O. guard bearings are lubricated, the end ball shaped covers need retracting to expose all grease nipples.



Clean and grease the P.T.O. drive shaft before each prolonged period of non-use.

Grease the guard tubes in winter to prevent freezing.



## COUPLING THE P.T.O. SHAFT

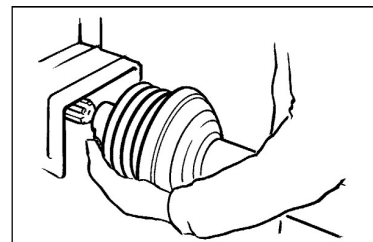
---

Stop the tractor engine and remove the starting key.

Clean and grease the P.T.O. and PIN

### **Q.-d pin**

Press q.-d. pin and simultaneously push P.T.O. drive shaft onto P.T.O. until pin engages.



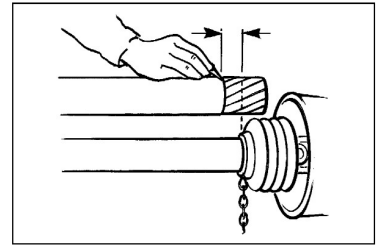
## PTO SHAFT OPERATION AND MAINTENANCE

---

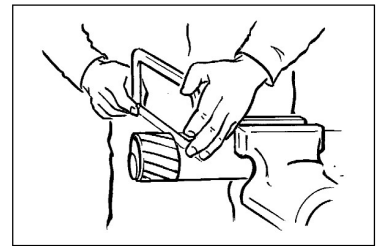
### LENGTH ADJUSTMENT

---

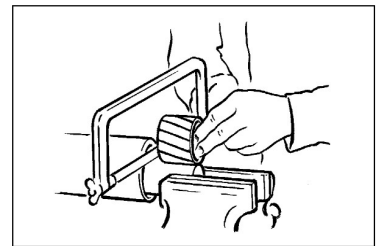
To adjust the length, hold the half-shafts next to each other in the shortest working position and mark them.



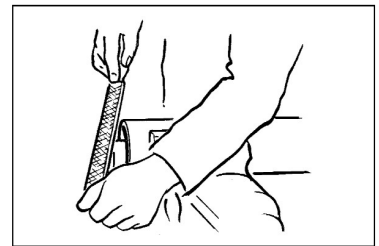
Shorten inner and outer guard tubes equally.



Shorten inner and outer sliding profiles by the same length as the guard tubes.



Round off all sharp edges and remove burrs.  
Grease sliding profiles.

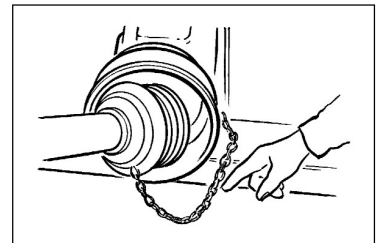


No other changes may be made to the P.T.O. drive shaft and guard.

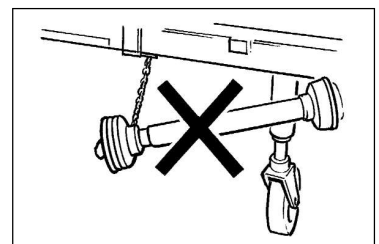
### CHAINS

---

Chains must be fitted so as to allow sufficient articulation of the shaft in all working positions.



Do not let the chains encircle the P.T.O. guard in use as this will shorten the life of the P.T.O. guard.



The PTO drive shaft must not be suspended from the chains! Please use the P.T.O. Support Hook provided.

[illegible]

[illegible]

## NOTES

---





## *Certificate of CE Conformity*

**Machine Model:**

**CRX150 / 180 / 240**

**Description:**

**MULTICUT MOWER**

*I hereby certify that the machine detailed hereon  
conforms to:*

**European Directives 2008/42/EC  
Supply of Machinery Regulations 2008  
As amended 91/368EEC – 93/44EEC – 93/68EEC  
HSE AIS 33**

**Signed:**

.....  
Quality Manager

Date:

**MARCH 2015**

### **Wessex International**

Charlton House, Caxton Place, East Portway Industrial Estate, Andover, Hampshire SP10 3QN  
Telephone: 01264 345870 Fax: 01264 345 880

[www.wessexintl.com](http://www.wessexintl.com)



**Wessex International**  
Charlton House, Caxton Close, East Portway Industrial Estate, Andover Hampshire. SP10 3QN  
Telephone: 01264 345870 Fax 01264 345880  
e-mail: [sales@wessexintl.com](mailto:sales@wessexintl.com)

[www.wessexintl.com](http://www.wessexintl.com)

## WESSEX PROLINE RMX, CRX & FRX INSTALLATION RECORD

Upon installation of this machine, it is the Dealers responsibility to fill out the Installation Record below and return to Wessex International either by Fax to 01264 348890 or Email [warranty@wessexintl.com](mailto:warranty@wessexintl.com).

IF THIS FORM IS NOT RETURNED, WE CANNOT ISSUE THE CUSTOMER THE APPLICATION FORM TO REGISTER FOR THE EXTENDED WARRANTY ON THEIR MACHINE.

### END USER DETAILS

NAME : \_\_\_\_\_

ORGANISATION : \_\_\_\_\_

ADDRESS : \_\_\_\_\_  
 \_\_\_\_\_  
 \_\_\_\_\_

TELEPHONE : \_\_\_\_\_ MOBILE : \_\_\_\_\_

EMAIL : \_\_\_\_\_

DEALER : \_\_\_\_\_ BRANCH : \_\_\_\_\_

MACHINE MODEL : \_\_\_\_\_ SERIAL NO: \_\_\_\_\_

INSTALLATION DATE : \_\_\_\_\_

THE MACHINE DETAILED ABOVE HAS BEEN CORRECTLY INSTALLED AND THE FOLLOWING POINTS HAVE BEEN DISCUSSED WITH THE CUSTOMER :

- 1 Correct Machine Operation
- 2 Operational Health & Safety
- 3 Machine Setting and Adjustments
- 4 Maintenance
- 5 Importance of tensioning belts after initial 2 - 3 hours work and routinely thereafter


### Delivery Checklist

Oil in gearboxes  
 All PTO Shafts properly attached with Safety Chocks attached  
 All PTO Shafts greased  
 All shields, guards and deflectors in place  
 Check wheel nuts are tight  
 All fittings tight


Inspected by : \_\_\_\_\_

### **IMPORTANT INFORMATION TO PREVENT DAMAGE - RELEVANT TO ALL TRAILED MACHINES**

Ensure that the tractor link arms are removed or at least dropped to prevent contact with the PTO shaft when turning.  
 Avoid sharp turns where the rear wheel of the tractor comes into contact with the drawbar or PTO shaft. Turning too sharp can also cause damage to the PTO shaft, it's universal joints and tractor tyres.

DEALER SIGNATURE : \_\_\_\_\_ NAME : \_\_\_\_\_

DATE : \_\_\_\_\_

Upon receipt of this form, we will forward the Extended Warranty Application Form to the End User.

**THANK YOU FOR FACILITATING THE SALE OF ANOTHER WESSEX PROLINE MACHINE!**

### **WESSEX INTERNATIONAL**

Charles House, Cuckoo Close, East Portway Industrial Estate, Andover, Hampshire SP20 3QH  
 T : 01264 348890 F : 01264 348890 E : [sales@wessexintl.com](mailto:sales@wessexintl.com)