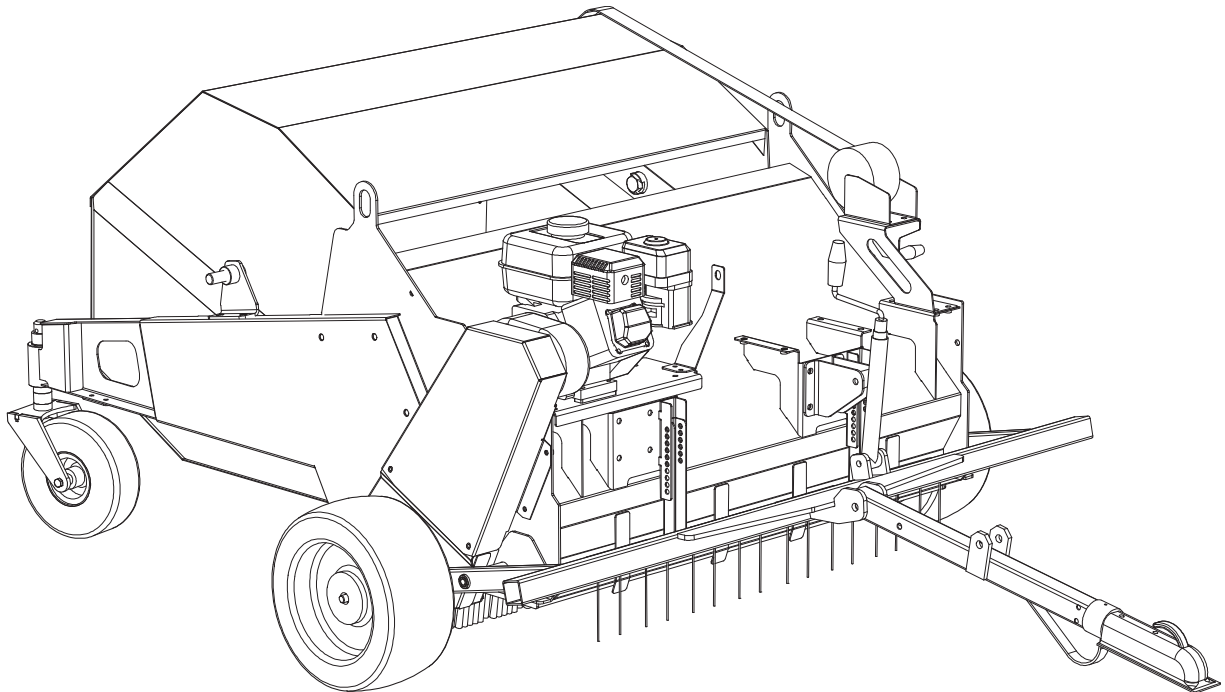


# Operation Manual and Parts Book

Wessex MTC 120 and MTX 120 Sweeper (MKII)  
Paddock Cleaner & Dung Beetle Range



---

Product Code: L2052



## CONTENTS

---

Welcome to your new Wessex Product .....	2
Safety Decals .....	3-5
Important Safety Warnings .....	6
Important ATV Safety Warnings .....	7, 8
Warranty .....	9
Setting up your Wessex Sweeper Collector .....	10
Adjusting the Sweeping Height .....	10
Compensating for Brush Wear .....	11
Front Spring Tine Option .....	11
Emptying the Hooper .....	11
Maintenance / Belt Adjustment / Lubrication .....	12
Troubleshooting .....	13
Specification .....	13
Parts Illustration - Mainframe Assembly - Plate 1 .....	14, 16
Parts List - Mainframe Assembly - Plate 1 .....	15, 17
Parts Illustration - Engine Drive Assembly - Plate 2 .....	18
Parts List - Engine Drive Assembly - Plate 2 .....	19
Parts Illustration - PTO Drive Assembly - Plate 3 .....	20
Parts List - PTO Drive Assembly - Plate 3 .....	21
Parts Illustration / Parts List - Rear Wheel Assembly - Plate 4 .....	22
Parts Illustration / Parts List - Spring Tine Option Plate 5 .....	23
PTO Shaft - Operation and Maintenance .....	24, 25
CE Certificate .....	26

## WELCOME TO YOUR NEW WESSEX PRODUCT

Thank you for purchasing a Wessex Product. As a Wessex customer, you now number among the most important people of our business and we will endeavour to give you the best service available through our dealer network.

Please read this Manual carefully and familiarise yourself and other persons that will be using the machine with its contents, to ensure the optimum performance and working life of your machine. It is advisable that a copy of this Manual is kept in the workshop and one copy with the machine. Further copies are available through your dealer or electronically via the Wessex website. [www.wessexintl.com](http://www.wessexintl.com)

On delivery, your dealer should go through the workings of the machine with you, explaining the setting up procedures, all of which are contained in this manual for further reference. The Warranty Registration Form must also be completed and returned to us **within 7 days of delivery** in order to register the Warranty. Alternatively if you prefer, you may register your product via our Website. <http://www.wessexintl.com/warranty-registration>

**PLEASE READ THE FOLLOWING PAGES CAREFULLY BEFORE USING YOUR MACHINE  
AND KEEP THIS MANUAL IN A SAFE PLACE.**



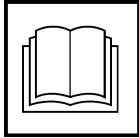
**THIS SAFETY SYMBOL IS TO ALERT OPERATORS OF A HAZARD  
THAT MAY RESULT IN INJURY.  
ALWAYS FOLLOW INSTRUCTIONS CAREFULLY**

## SAFETY DECALS

---



- GB **ATTENTION** Description of pictograms.  
 F **ATTENTION** Description des pictogrammes.  
 D **VORSICH** Beschreibung der Piktogramme.



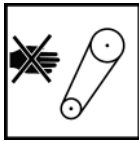
- GB Read Operating manual before use.  
 F Lisez Manual D'Opération avant l'utilisation.  
 D Vor der Benutzung, Betriebshandbuch lesen.



- GB Do not use without pto shaft guard.  
 F Ne pas utiliser sans de dispositif de sûreté de l'arbre (arbre d'entraînement).  
 D Nicht benutzen ohne p.t.o. (antriebswelle) schutvorrichtung.



- GB Ear defenders must be worn.  
 F Défenseurs des oreilles doivent être portés.  
 D Gehörschutz getragen werden.



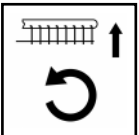
- GB Never remove guards or attempt adjustment until rotor has stopped.  
 F Ne retirez jamais les gardes ou d'ajustement tentative jusqu'à ce que toutes les pièces mobiles ont été interrompus.  
 D Schutvorrichtung niemals abnehmen oder einstellung versuchen, bevore der rotor abstellt.



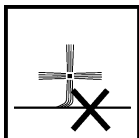
- GB Bystanders must be at least 20 metres from machine range of action.  
 F Des spectateurs doivent s'écarter au moins metres du rayon d'action de la machine.  
 D Umstehenden müäen sich mindestens 20 meter vom maschinenbetriebsraum entfernen.



- GB Keep clear of unpropped body  
 F Reculez de la machine éléee.  
 D Nicht in die ungeschützte Maschine fassen

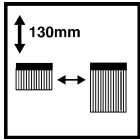


- GB When scarifying, lift rotor before turning.  
 F À la course de rayer, élevez le rotor avant de tourner la machine.  
 D Beim vertikutieren (Grasnarbe aufreiiäen) muss der Rotor vor Richtungsveränderungen (Kurven) angehoben warden.



- GB Damage to brushes if set too low.  
 F Ne montez pas la brosse très bas.  
 D Bürsten können beschädigt warden, wenn sie zu tief eingestellt sind.

## SAFETY DECALS



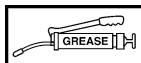
- GB Replace brushes when worn to 130mm of bristle.  
 F Remplacez la brosse à 130 mm de longueur de poil.  
 D Die Bürsten sind zu wechseln, wenn die Borsten nur noch 130mm lang sind.



- GB Always stop rotor before emptying hopper.  
 F Arrêtez le rotor avant de vider la trémie.  
 D Rotor muss vor Entleerung des Behälters zum Stillstand kommen.



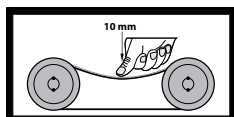
- GB Keep hands and feet clear  
 F Garder les mains et les pieds.  
 D Halten Sie Ihre Hände und Füße.



- GB Grease points  
 F Les points de graissage  
 D Grease Punkte.



- GB Lifting Point  
 F Point de levage  
 D Anschlagpunkt



- GB **CORRECT BELT TENSION:** Check belt tension regularly:  
 10mm of belt deflection at thumb pressure between pulleys.  
 F **TENSIONNEMENT CORRECT DE LA COURROIE :** Contrôler le tensionnement régulièrement :  
 la déflexion de la courroie sous la pression du pouce entre les deux poulies doit être de 10 mm.  
 D **KORREKTE RIEMENSANNUNG:** Riemenspannung regelmäßig überprüfen:  
 10 mm Eindrücktiefte bei Daumendruck zwischen Riemenscheiben.



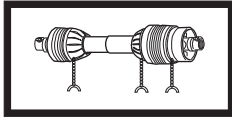
- GB It is the operators responsibility to ensure that the machine is compatible with the loading capacity of the towing vehicle.  
 F Il est de la responsabilité des opérateurs afin de s'assurer que la machine est compatible avec la capacité de chargement du véhicule tracteur.  
 D Es ist den Betreibern dafür zu sorgen, dass die Maschine mit der Belastbarkeit des Zugfahrzeugs ist.



- GB Never carry passengers on implements unless designed to do so.  
 F Ne jamais transporter des passagers sur instruments sauf s'ils sont conçus pour le faire.  
 D Niemals Passagiere implementiert, es sei denn ausgelegt, dies zu tun.

## SAFETY DECALS

---



- GB Safety Chains must be anchored tightly. Never allow chains to wrap round PTO shaft. Grease PTO shaft regularly.
- F Chaînes de sécurité doit être ancré solidement. Ne laissez jamais les chaînes à entourer le transmission. Régulièrement graisse le transmission.
- D Sicherheitsketten müssen fest verankert sein. Lassen Sie niemals Ketten zu runden Zapfwelle zu wickeln. Fett Gelenkwelle regelmäßig.



- GB Keep clear of Hot Exhaust.
- F Restez à l'écart des d'échappement chauds.
- D Halten Sie sich von heißen Auspuff.

## **IMPORTANT NOTICE**

### **FITTING PTO SHAFT TO MACHINE & TRACTOR - Applicable to MT-120(P)**

---

- All safety chains must be anchored tight enough to allow a small amount of movement, but not enough to wrap around the P.T.O. Shaft.
- Ensure that the shaft **and guard** is regulary greased to avoid overheating and to give lubrication.
- **Important:** Thoroughly read through the manufacturers instruction book before using the P.T.O. Shaft.

**P.T.O.Shafts are not covered by the Wessex Warranty.**

## IMPORTANT SAFETY WARNINGS

---



Wessex sweepers are guarded for your protection, but you must always observe certain elementary precautions. Sweepers are potentially **dangerous** and should be used with the greatest respect and **ALL OPERATORS MUST** read this manual and be aware of all safety precautions.

1. **NEVER** attempt any adjustment whatsoever, unless the machine and it's moving parts are **COMPLETELY** at a standstill.
2. **NEVER** attempt to clear any obstructions around the machine unless the machine and it's moving parts are **COMPLETELY** at a standstill.
3. **NEVER** remove belt guards unless the machine and it's moving parts are **COMPLETELY** at a standstill.
4. **NEVER** remove safety guards unless the machine and it's moving parts are **COMPLETELY** at a standstill.
5. **NEVER** operate the Sweeper with people positioned behind, keep everybody (especially children and animals) at a safe distance, **minimum 20 metres**.
6. Stand well back from the machine when brushes are spinning.
7. Regularly inspect the **Rotor Fixing Bolts** to ensure that they are in excellent condition. Replace **IMMEDIATELY** if any signs of fracture or excess wear becomes apparent. Serious damage, which is excluded from our warranty conditions, may result from using your sweeper with an unbalanced rotor. When replacing brushes, always fit new mounting bolts and nuts to ensure that the rotor is balanced and running smoothly.

### HEALTH AND SAFETY - Noise at Work Regulations

#### READING AT THE OPERATORS EAR

**MTC/MTX Series Engine Driven Sweepers: 97.5 D.B.A.**

Depending on conditions and material being swept, this may alter, it is therefore advisable for users to do their own assessment.



## IMPORTANT ATV SAFETY WARNINGS

---

### READ THE FOLLOWING CAREFULLY

### IMPORTANT SAFETY INSTRUCTIONS ON COUPLING IMPLEMENTS AND ATTACHMENTS TO ATV'S



#### TRAINING

- It is most essential that all operators of ATV's are trained by a certified training organisation.
- It is strictly forbidden that any person under 16 years of age should ride an ATV.
- Any person 17 years of age must have had training before towing a trailer with an ATV.
- Contact your local HSE office for approved training courses.

#### BODY PROTECTION

- Remember that when riding on an ATV the only form of protection that you have is what you wear. **ALWAYS** wear a helmet, eye protection and suitable robust clothing.
- Never operate an ATV or attachments while under the influence of alcohol or non-prescription drugs.
- Contact your doctor before operation of an ATV or attachments while under the influence of any prescription drugs.

#### ATV MANUAL

- Before coupling any implement to your ATV refer to your ATV handbook.

#### STABILITY

- When using equipment coupled to an ATV it is very important to remember that the handling characteristics of your ATV will change dramatically, whether the additional load is placed on the front or rear rack or trailed on the towing ball hitch.

#### WEIGHT CAPACITY

- Always ensure that the implement or attachment that you are coupling to the ATV is within the ATV's drawbar loading or weight carrying capacity. Refer to the ATV manufacturer's handbook to obtain information on the specific capacities.
- It is most important that you know the weight of your load, especially when on slopes or hillsides.
- As a guide, on level ground with an unbraked implement, the weight of the implement should be approximately no more than twice the unladen weight of the ATV. This should be reduced on sloping, uneven or rough ground.

#### WEIGHT TRANSFER

- Always take great care when towing loads which may be subject to weight transfer e.g. liquids or livestock, especially on hillsides and slopes.
- Always restrict the movement of animals or rolling objects in a trailer.

## **IMPORTANT ATV SAFETY WARNINGS**

---

### **TOWING**

- Never tow loads larger or heavier than recommended for your ATV. (See ATV hand book).
- Never tow or turn across a slope.
- Never tow down a steep slope with a large or heavy load.
- When towing heavy loads there is a significant risk of jack-knifing or overturning.

### **ROUGH TERRAIN**

- Always take care when operating implements on rough terrain or uneven ground.
- Take special care when operating on slippery surfaces especially hill sides or slopes.
- Take extra care when towing on hillsides, slopes or rough terrain.

### **OPERATING ON ROADS**

- The Wessex MT sweeper is not designed for travelling distances on roads but when crossing or going short distances always travel slowly and do not exceed 10 KPH.
- Make sure that your equipment complies with Road Vehicle Lighting Regulations.
- Ensure that you have the correct insurance cover and comply with all relevant traffic laws.

### **LOAD SECURITY**

- Always secure your load firmly with ratchet straps.
- Make sure that your load is evenly; distributed.
- Never stack a high load, high loads increase the risk of overturning.

### **PASSENGERS**

- Never carry passengers on any kind of implement or attachment, especially children.

### **MAINTENANCE**

- Service your ATV and attachments as per the manufacturer's handbook. Regular servicing of your ATV will ensure that it will steer, stop and handle to its best ability and your attachment will operate as safely and effectively as possible. Regular servicing helps ensure the longest possible working life for your equipment.

### **EQUIPMENT SAFETY INSPECTION**

- Check tyre pressure, incorrect tyre pressure can seriously affect the handling of your ATV. (See Operators handbook).
- Maintain your equipment regularly to keep it in safe working order.

### **ROUTE / RISK ASSESSMENT**

- Assess and plan the route that you intend to travel to avoid any type of hazards i.e. rocks, boulders, ditches, hidden fences or wire, pot holes, low hanging branches or any other type of hazard.
- Where possible stay with a routine route to avoid hazards.
- The risk may change in wet or wintry conditions, avoid slopes where possible.

## WARRANTY

---

Your Wessex product or equipment is warranted free from defect in workmanship or manufacture for one year from date of purchase. Any parts which appear to us to be defective, either in material or workmanship shall be replaced or repaired at no cost to the purchaser, subject to the following conditions:

---

1. The registration card enclosed with this booklet must be returned to us within seven days of purchase. Alternatively if you prefer, you may register your product via our Website.  
<http://www.wessexintl.com/warranty-registration>
2. Any failure in the machine should be reported in the first instance immediately to your dealer, who will act on your behalf to resolve the matter to your satisfaction.
3. The defective parts will be returned by your dealer to us, accompanied by a full statement describing the failure and the circumstances and conditions in which the failure occurred.
4. The following are specifically excluded from our terms of warranty:
  - a) Fair wear and tear, especially to belts, brushes, blades, spinners and tyres.
  - b) Damage to brushes caused through incorrect adjustment of the rotor (see instructions).
  - c) Damage caused by neglect or lack of lubrication.
  - d) Damage caused by misuse or abuse.
  - e) Damage caused whilst the machine is in transit.
  - f) Damage caused to the frame of the machine by running the machine with unbalanced brush rotors.
  - g) Damage caused to the machine by use with loose nuts, bolts, screws or any other type of fittings.
5. The warranty is for the benefit of the first purchaser only.
6. Wessex International decisions will be final and binding.

**Note:**

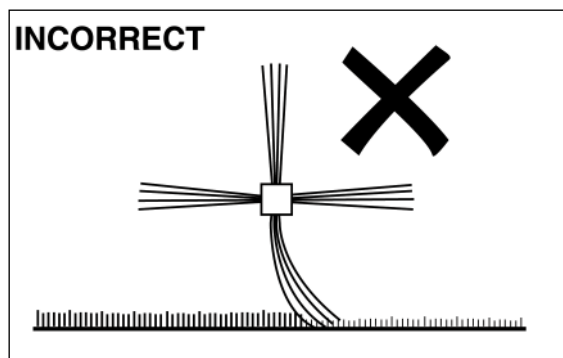
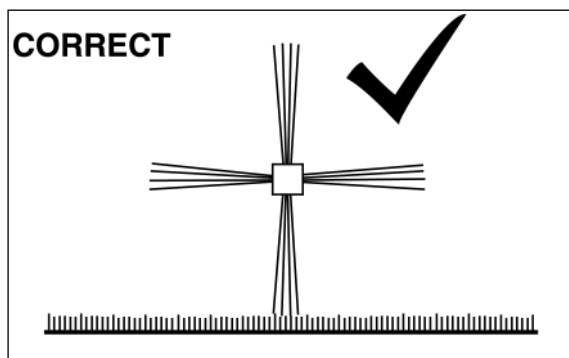
**It is recommended that every machine is inspected after one hour of operation to check that all nuts, bolts, screws or any other types of fixings are tight and any loose fixings or components should be rectified as appropriate. Belt tension should also be checked and adjusted at this point.**

**Further inspections should be carried out at regular intervals thereafter.**

## SETTING UP YOUR WESSEX SWEEPER COLLECTOR

---

To get the very best performance from the sweeper and long life from the brushes it is most important that you set the brushes up correctly. See diagram below, the brushes should be set so that they only just touch the surface that is being swept. Most of the debris collection performance is achieved by the wind from the brushes, if there is a drumming sound as the brushes rotate then the brushes are set too low to the ground and should be raised immediately to avoid damage to the brushes and rotor.



**THE BRUSHES ARE NOT DESIGNED FOR SCARIFYING OR THATCH REMOVAL, AND DAMAGE TO THE BRUSHES WILL QUICKLY OCCUR IF USED FOR THIS PURPOSE.**

When using the sweeper it is a good idea to start off with the brush rotor too high and lower it gently until a satisfactory result is achieved.

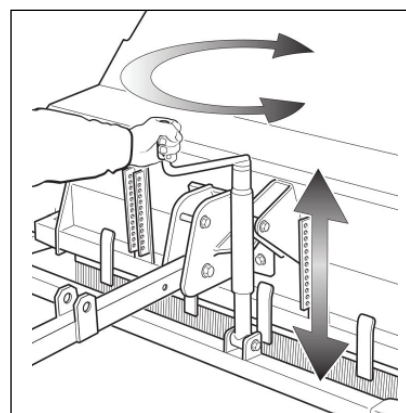
It is recommended that you keep the revs to a minimum as excessive revs will blow dry leaves away rather than pick them up.

When collecting horse dung, use a slow forward speed particularly when driving over the dung piles.

### ADJUSTING THE SWEEPING HEIGHT

---

Adjusting the sweeping height is achieved by simply turning the adjusting handle at the front of the machine (see drawing). Turn clockwise to raise the sweeping brush and anti-clockwise to lower the sweeping brush.



#### **Please note:**

White Wessex bristles have been developed for use in general sweeping (leaves and twigs) on fine turf. The yellow bristles are coarser and intended for dung collection. Using the correct bristles will ensure the best performance.

## COMPENSATING FOR BRUSH WEAR

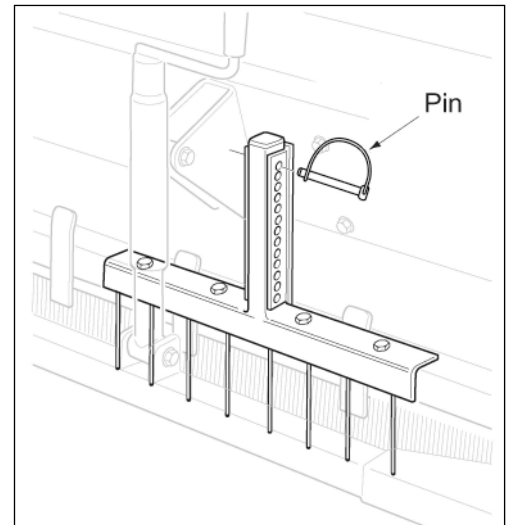
The bristles on your Sweeper rotor will wear in due course, and it will be necessary to adjust the height accordingly.

The Sweeper has been designed to work effectively until the bristles are approximately half their original length. When the bristles wear beyond this point there is insufficient momentum to throw the leaves and debris into the hopper and it will be necessary to replace the brushes on your machine. When worn down to 130mm of bristle you should replace the brushes.

### FRONT SPRING TINE OPTION (Paddock Cleaner Only)

The front tines are fitted to the Paddock Cleaner option to assist collection of horse manure and similar material.

To adjust the tines simply remove the pin and slide the tine bar up or down to adjust (see drawing). Set the tines slightly below the brushes so that the tines loosen any compacted material and the brushes can therefore easily collect the material.

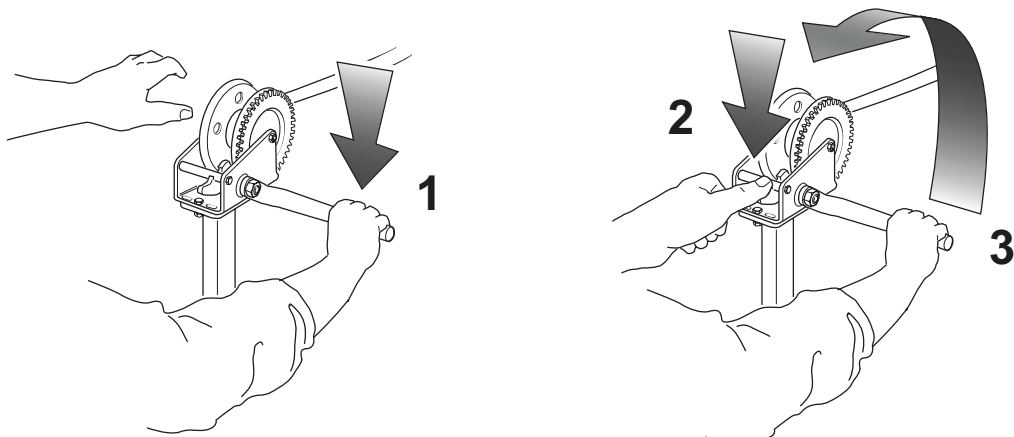


### EMPTYING THE HOPPER

The hopper of the Wessex Sweeper tips forward towards the vehicle when using the hand winch.

**REMEMBER , KEEP HOLD OF THE HANDLE WHEN CLOSING HOPPER.**

1. Grip handle.
2. While still holding handle, press to release ratchet.
3. While still holding handle, unwind to return hopper.



## MAINTENANCE

---

- **IMPORTANT!** Check that all fastening sets (bolts and nuts) are tight after the first hour of operation.

## BELT ADJUSTMENT

---

- The belts are tensioned in the factory but they will stretch after two or three hours work. It is important to check and re-tension at this point.
- To tighten the belts, stop the machine and remove the belt cover, then adjust the belt tension by adjusting the jockey pulley adjuster. **NOTE: Correct belt tension is approximately 12-15mm of deflection under the thumb pressure halfway between the pulleys.**
- If belts are cut, frayed or damaged in any way they should be replaced.
- Refit the belt cover and tighten the fixing nut.

## LUBRICATION

---

### DAILY (8-10 Working Hours)

- Grease main rotor bearings (x2).
- Oil height adjusting handle threads.

### PERIODICALLY (50+ Hours)

- Grease ball hitch and swivel.

### ENGINE VERSION MT-120 (E)

- Check/change engine oil and carry out other specified service requirements as recommended by manufacturer (see engine hand book).

### PTO VERSION MT-120 (P)

- Check gearbox oil periodically, top up with EP90 gear oil.
- Grease drive shaft universal joints periodically.
- Grease gearbox cross shaft bearings.

## TROUBLESHOOTING

FAULT	CAUSE	REMEDY
Not sweeping correctly	1. Driving too fast 2. Worn brushes 3. Belts slipping 4. Brushes set too high/low 5. Dung tines too high	1. Slow down 2. Replace brushes 3. Adjust belt tension 4. Adjust brush height 5. Lower tines
Blowing dry leaves away and not collecting	1. Engine revs too high 2. Front brush worn or missing	1. Reduce engine revs 2. Replace front brush bar
Drumming noise	1. Brushes set too low	1. Raise sweeping height
Vibration	1. Brushes set too low 2. Brushes loose on main rotor 3. Brush broken	1. Raise sweeping height 2. Tighten up brush fixings 3. Replace brush

## SPECIFICATION

Engine:	Loncin (5.5HP)
Working Width:	1.2m
Overall Width:	1.8m
Overall Height:	1.10m
Overall Length:	2.75m
Hopper Capacity:	0.7m <sup>3</sup> (approx.)
Unladen Weight:	317kg
Maximum Payload:	210kg
Tyre Pressure Front:	28psi / 1.9 bar
Tyre Pressure Rear:	Semi-Solid / N/A
Maximum laden weight will vary depending on the type and weight of material being swept into the hopper. <b>NEVER</b> exceed max. gross laden weight of 500kg when used behind an ATV.	

## PARTS ILLUSTRATION - MAINFRAME ASSEMBLY - PLATE 1

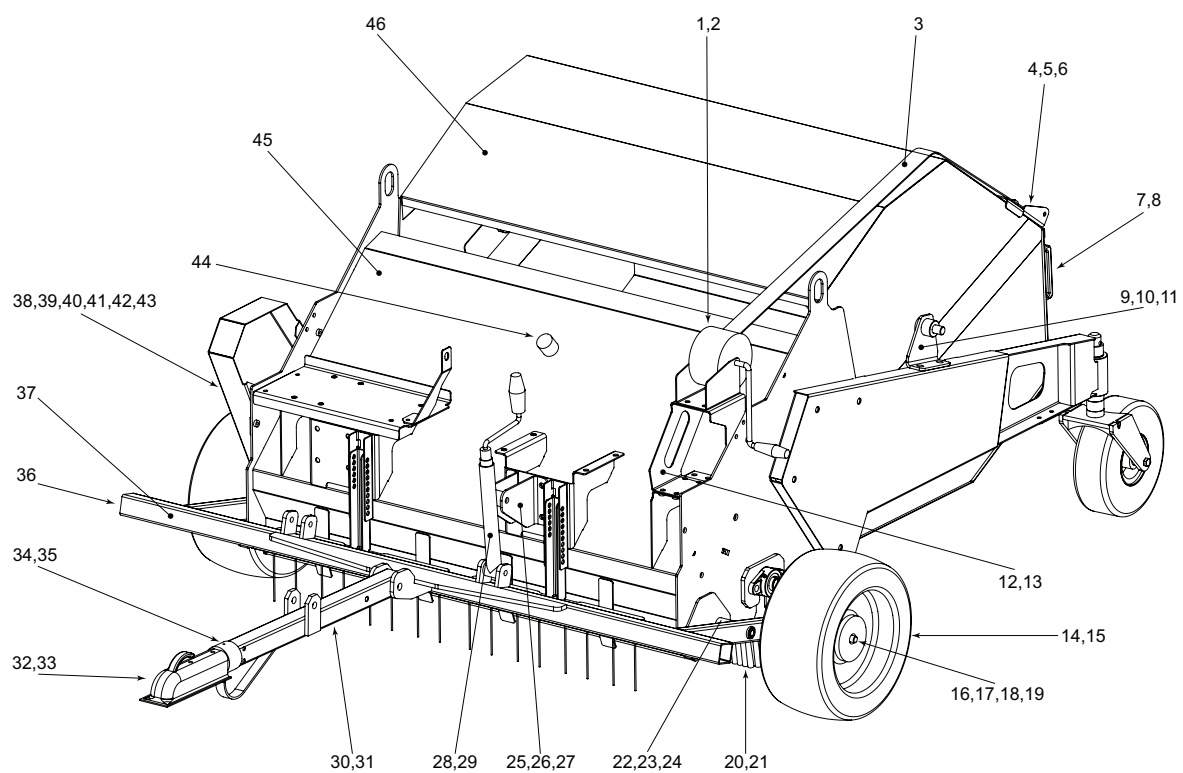


PLATE 1



**PARTS LIST - MAINFRAME ASSEMBLY - PLATE 1**

Item No.	Part No.	Description	Qty. per Machine
1	WX-3430	Winch	1
2	WX-9503	Winch Fastening Set	3
3	WX-3530	Winch Strap	1
4	WX-2820	Strap Support Tube	1
5	WX-9603	Strap Support Tube Fastening Set	1
6	WX-32276	Winch Hopper Bracket	1
7	WX-34880	Handle	1
8	WX-34401	Handle Fastening Set	2
9	WX-32176	Hopper Pivot Bracket	2
10	WX-30601	Hopper Pivot Bracket Fastening Set	4
11	WX-34301	Hopper Pivot Bolt	2
12	WX-31676	Winch Bracket	1
13	WX-34101	Winch Bracket Fastening Set	4
14	WX-1352	Front Wheel (Complete)	2
15	WX-B5351	Tyre	2
16	WX-4951	Hub Cap	2
17	WX-1538	Wheel Bearing (Inner)	2
18	WX-1638	Wheel Bearing (Outer)	2
19	WX-0645	Oil Seal	2
20	WX-1676	Front Brush	1
21	WX-10703	Front Brush Fastening Set	1
22	WX-10828	Axle Frame Pivot	2
23	WX-9138	Insert Bush	2
24	WX-26101	Axle Frame Fastening Set	1
25	WX-31376	Height Adjuster Bracket - Left Hand	1
26	WX-31476	Height Adjuster Bracket - Right Hand	1
27	WX-9503	Height Adjuster Bracket Fastening Set	4
28	WX-13380	Height Adjuster	1
29	WX-0503	Height Adjuster Fastening Set	1
30	WX-18280	Drawbar	1
31	WX-18001	Drawbar Fastening Set	1
32	WX-2356	Ball Hitch	1
33	WX-1503	Ball Hitch Fastening Set	1
34	WX-12156	Swivel	1
35	WX-0246	Grease Nipple	1

## PARTS ILLUSTRATION - MAINFRAME ASSEMBLY - PLATE 1

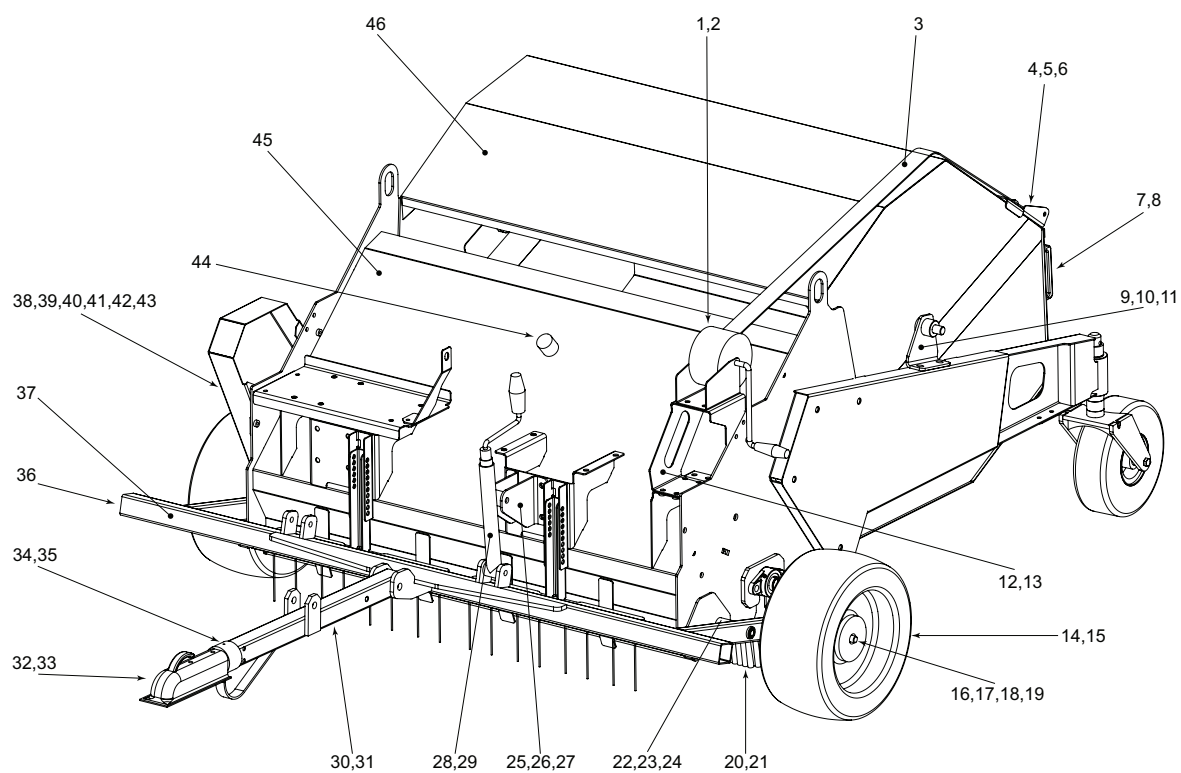


PLATE 1

## PARTS LIST - MAINFRAME ASSEMBLY - PLATE 1

---

Item No.	Part No.	Description	Qty. per Machine
36	WX-34980	50x50 Plastic End Cap	2
37	WX-17651	Front Wheel Frame	1
38	WX-19277	Belt Guard (Lower)	1
39	WX-34101	Belt Guard (Lower) Fastening Set	4
40	WX-31976	Belt Guard (Upper)	1
41	WX-34101	Belt Guard (Upper) Fastening Set	4
42	WX-31876	Belt Guard (Inner)	1
43	WX-3501	Belt Guard (Inner) Fastening Set	1
44	WX-34780	Rubber Bump Stop	3
45	WX-19979	Mainframe	1
46	WX-20179	Hopper	1

## PARTS ILLUSTRATION - ENGINE DRIVE ASSEMBLY - PLATE 2

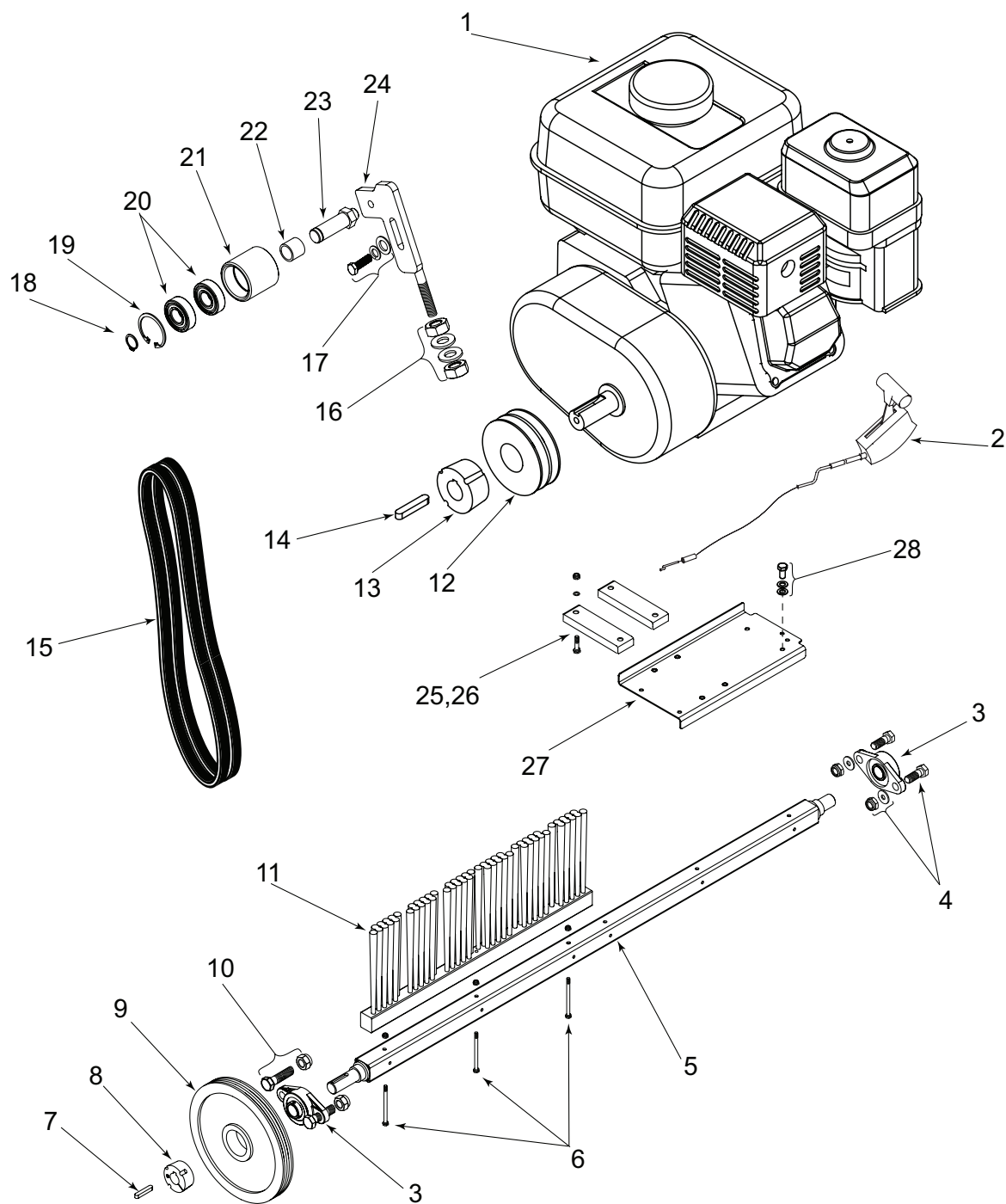


PLATE 2

**PARTS LIST - ENGINE DRIVE ASSEMBLY - PLATE 2**

Item No.	Part No.	Description	Qty. per Machine
1	WX-6460	Loncin Engine	1
2	WX-6756	Throttle Cable	1
3	WX-0541	Bearing Unit	2
4	WX-1101	Bearing Fastening Set (Non Drive End)	2
5	WX-11066	1.2m MT Brush Rotor	1
6	WX-5001	Brush Fastening Set (3 Bolts)	4
7	WX-0647	Rotor Key	1
8	WX-6562	Taper Lock	1
9	WX-6462	Rotor Pulley	1
10	WX-0601	Bearing Fastening Set (Drive End)	2
11	WX-2870	Brush Strip (Leaf Sweeper)	8
11	WX-7570	Brush Strip (Paddock Sweeper)	8
12	WX-6262	Engine Pulley	1
13	WX-13062	Taper Lock	1
14	WX-2347	Engine Key	1
15	WX-3634	Drive Belt	2
16	WX-17903	Adjustment Lock Nuts	1
17	WX-14303	Belt Tensioner Fastening Set	1
18	WX-0622	Circlip	1
19	WX-0722	Circlip	1
20	WX-1438	Bearing	2
21	WX-9862	Jockey Pulley	1
22	WX-11666	Jockey Pulley Spacer	1
23	WX-14166	Jockey Pillar	1
24	WX-32576	Belt Tensioner	1
25	WX-31776	Engine Bracket	1
26	WX-1201	Engine Fastening Set	4
27	WX-34276	Engine Mount Plate	2
28	WX-34101	Engine Mount Plate Fastening Set	4

## PARTS ILLUSTRATION - PTO DRIVE ASSEMBLY - PLATE 3

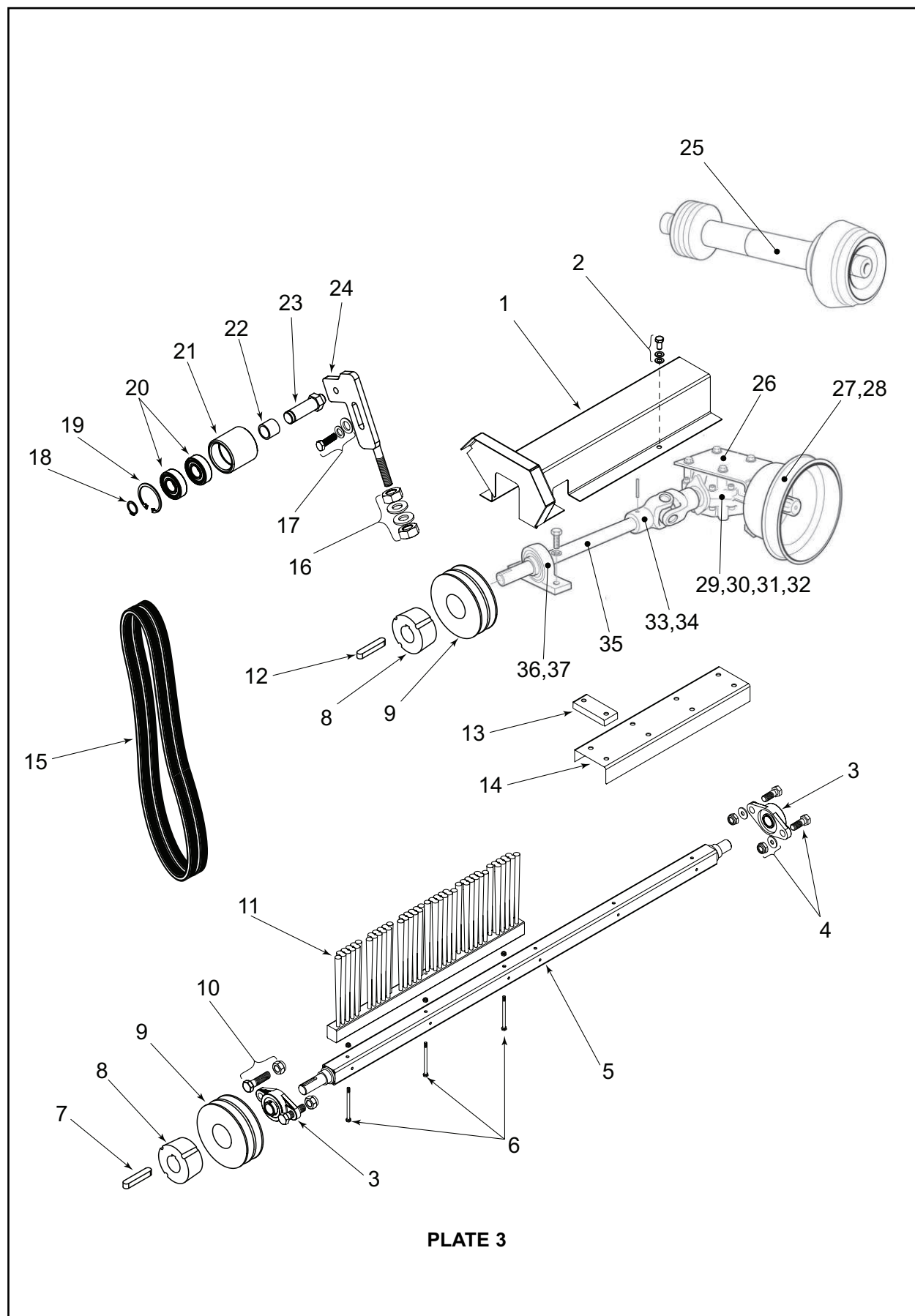


PLATE 3

## PARTS LIST - PTO DRIVE ASSEMBLY - PLATE 3

Item No.	Part No.	Description	Qty. per Machine
1	WX-18577	Driveshaft Shield (Upper)	1
2	WX-34101	Cover Fastening Set	4
3	WX-0541	Bearing Unit	2
4	WX-1101	Bearing Fastening Set (Non Drive End)	2
5	WX-11066	Brush Rotor	1
6	WX-5001	Brush Fastening Set (3 Bolts)	4
7	WX-0647	Rotor Key	1
8	WX-8762	Taper Lock	2
9	WX-12162	Pulley	2
10	WX-0601	Bearing Fastening Set (Drive End)	2
11	WX-2870	Brush Strip (Leaf Sweeper)	8
11	WX-7570	Brush Strip (Paddock Sweeper)	8
12	WX-0147	Key	1
13	WX-15777	Bearing Spacer	1
14	WX-32476	Driveshaft Shield (Lower)	1
15	WX-6234	Drive Belt	2
16	WX-17903	Adjustment Lock Nuts	1
17	WX-14303	Belt Tensioner Fastening Set	1
18	WX-0622	Circlip	1
19	WX-0722	Circlip	1
20	WX-1438	Bearing	2
21	WX-9862	Jockey Pulley	1
22	WX-11666	Jockey Pulley Spacer	1
23	WX-14166	Jockey Pillar	1
24	WX-32576	Belt Tensioner	1
25	WX-3781-L	PTO Shaft	1
26	WX-5377	Gearbox Bracket	1
27	WX-5177	Bucket Guard	1
28	WX-5103	Bucket Guard Fastening Set	1
29	WX-2457	Gearbox	1
30	WX-31201	Gearbox Fastening Set (4 Bolts)	1
31	WX-2557	Elbow	1
32	WX-12257	Breather Plug	1
33	WX-2581	Drive Coupling	1
34	WX-4222	Roll Pin	1
35	WX-18066	Cross Shaft - Long	1
36	WX-0341	Bearing Unit	1
37	WX-31001	Bearing Unit Fastening Set	2

## REAR WHEEL ASSEMBLY - PLATE 4

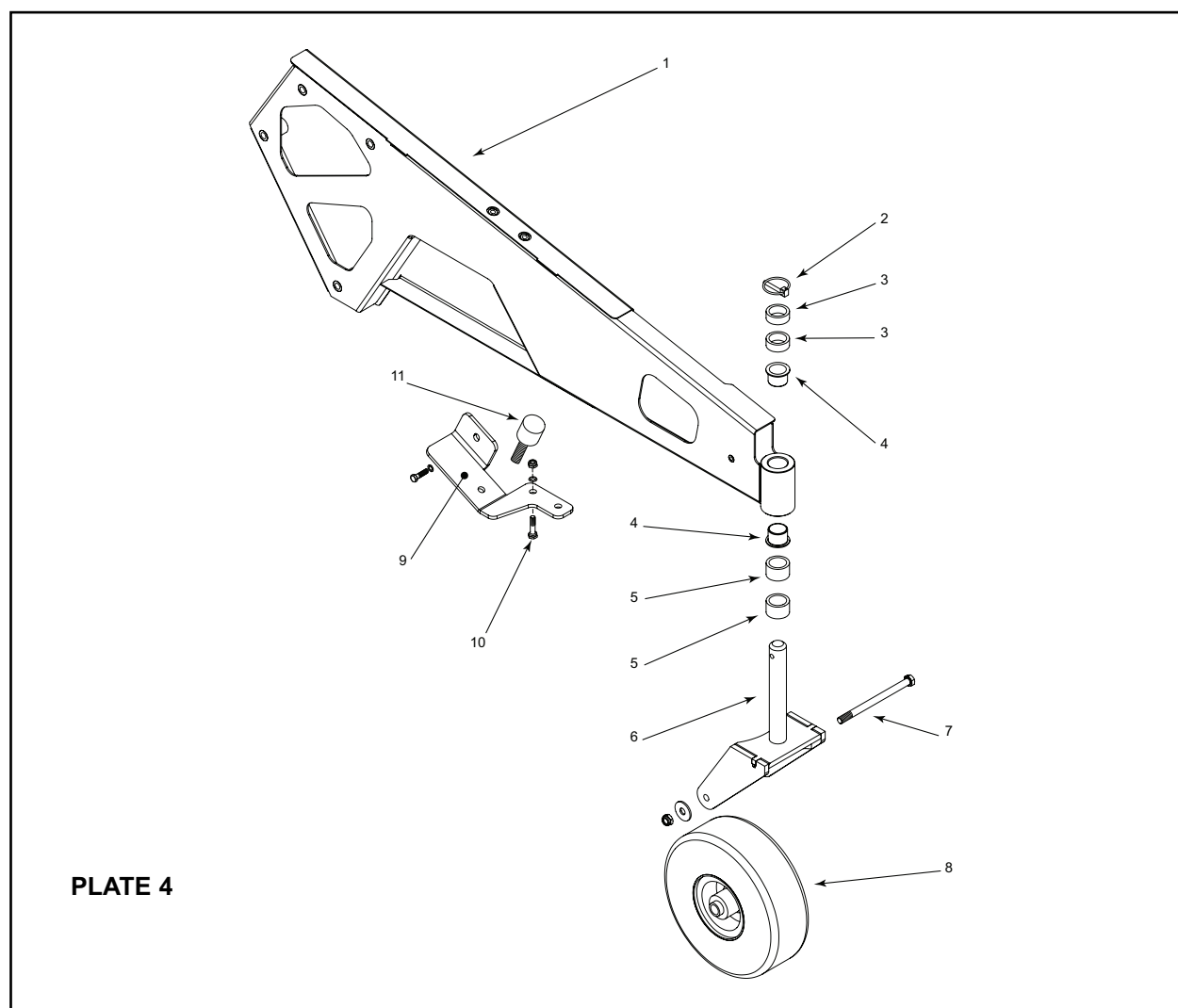
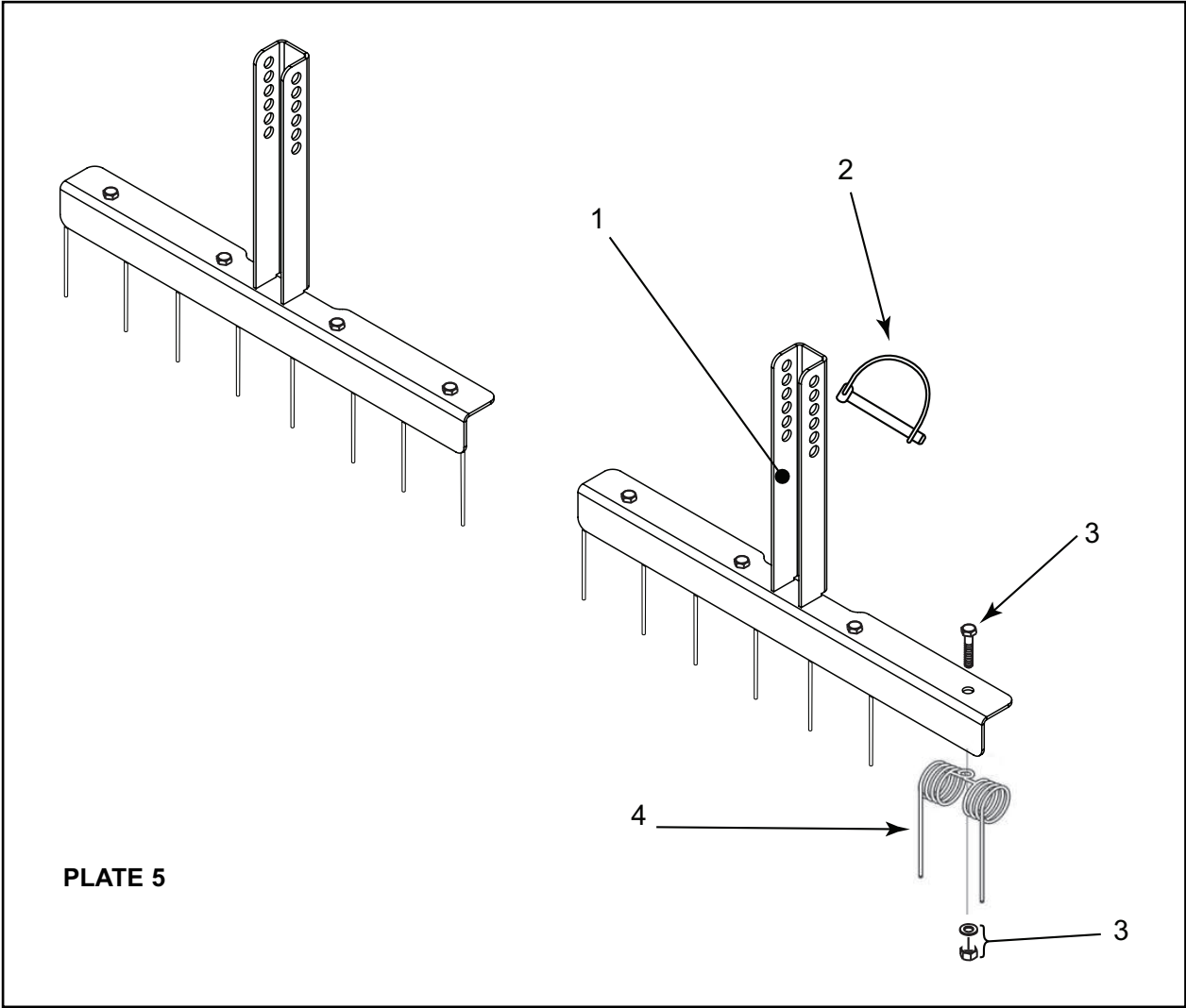


PLATE 4

Item No.	Part No.	Description	Qty. per Machine
1	WX-17451	Side Arm - Left Hand	1
1	WX-17551	Side Arm - Right Hand	1
2	WX-0127	Linch Pin	2
3	WX-16751	15mm Spacer	4
4	WX-31880	Bush	4
5	WX-16651	25mm Spacer	4
6	WX-1450	Wheel Fork	2
7	WX-16103	Wheel Fastening Set	2
8	WX-4652	Wheel	2
9	WX-32376	Hopper Stop Bracket - Left Hand	1
9	WX-32676	Hopper Stop Bracket - Right Hand	1
10	WX-34401	Hopper Stop Bracket Fastening Set	6
11	WX-34780	Rubber Bump Stop	3



**SPRING TINE OPTION - PLATE 5**



Item No.	Part No.	Description	Qty. per Machine
1	WX-31576	Tine Bar	2
2	WX-1128	Retaining Pin	2
3	WX-11303	Tine Fastening Set	8
4	WX-3125	Tine	8

## PTO SHAFT OPERATION AND MAINTENANCE - MT120-P ONLY

---

### IMPORTANT!

**PTO drive shafts must only be used for their intended purpose.**

PTO drive shafts are designed for specific machine types and power requirements.

They must not be replaced by other models.

Ensure that the PTO drive shaft is securely connected.

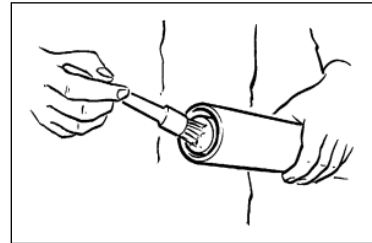
**Only use a completely protected drive system:**

PTO drive shaft with complete guard and complementary guard on tractor and implement. A complete guard is essential in all working positions.

## LUBRICATION

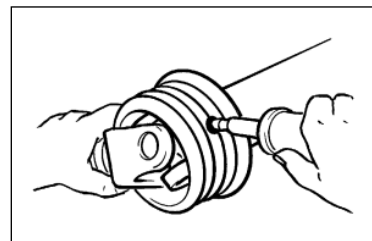
---

Lubricate with quality grease before starting work and every 8 operating hours.



Clean and grease the PTO drive shaft before each prolonged period of non-use.

Grease the guard tubes in winter to prevent freezing.



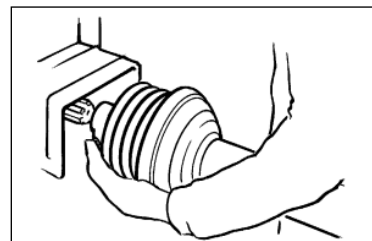
## COUPLING THE PTO SHAFT

---

Clean and grease the PTO and PIN

### Q.-d pin

Press q.-d. pin and simultaneously push PTO drive shaft onto PTO until pin engages.



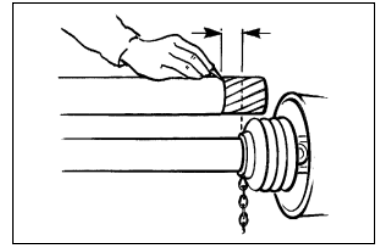
## PTO SHAFT OPERATION AND MAINTENANCE MT120-P ONLY

---

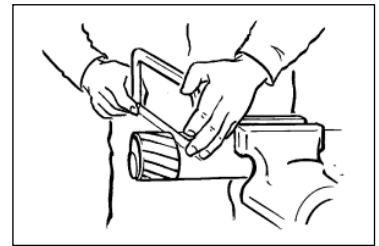
### LENGTH ADJUSTMENT

---

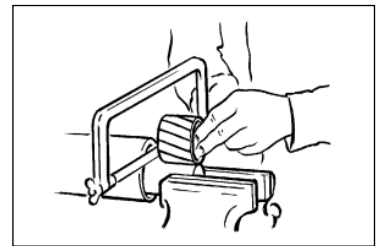
To adjust the length, hold the half-shafts next to each other in the shortest working position and mark them.



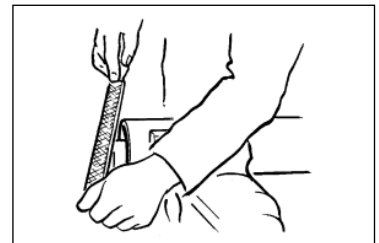
Shorten inner and outer guard tubes equally.



Shorten inner and outer sliding profiles by the same length as the guard tubes.



Round off all sharp edges and remove burrs.  
Grease sliding profiles.

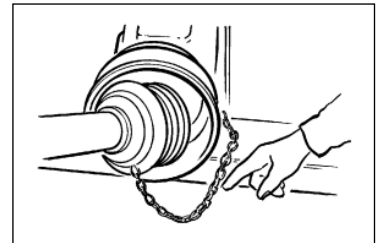


No other changes may be made to the PTO drive shaft and guard.

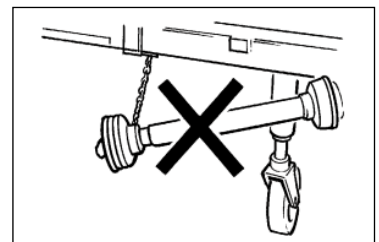
### CHAINS

---

Chains must be fitted so as to allow sufficient articulation of the shaft in all working positions.



The PTO drive shaft must not be suspended from the chains!





## *Certificate of CE Conformity*

**Machine Model:**

MTC/MTX 120

**Description:**

SWEeper COLLECTOR

*I hereby certify that the machine detailed hereon  
conforms to:*

**European Directives 2008/42/EC  
Supply of Machinery Regulations 2008  
As amended 91/368EEC – 93/44EEC – 93/68EEC**

**Signed:**

.....  
Quality Manager

Date:

30/04/2015

### **Wessex International**

Charlton House, Caxton Place, East Portway Industrial Estate, Andover, Hampshire SP10 3QN  
Telephone: 01264 345870 Fax: 01264 345 880

[www.wessexintl.com](http://www.wessexintl.com)





Wessex International  
Charlton House, Caxton Close, East Portway Industrial Estate, Andover Hampshire. SP10 3QN  
Telephone: 01264 345870 Fax 01264 345880  
e-mail: [sales@wessexintl.com](mailto:sales@wessexintl.com)

[www.wessexintl.com](http://www.wessexintl.com)

---