

FOR MODEL

## Sidewalk-Pro SD-95

INTRODUCTION.....	3
GENERAL INFORMATION .....	4
SAFETY ... ..	5-6
SPREADER PARTS/DIAGRAMS.....	7-15
OPERATING THE SPREADER .....	16
BLANK PAGE .....	17
WARRANTY .....	18
NOTES PAGE .....	19

Have a question or need assistance?  
**SnowEx Customer Service**  
**(800) 725-8377**

or (586) 756-6555

Monday through Friday 8:00 AM to 4:30 PM EST

Fax: (586) 427-0552

E-Mail: [customercare@trynexusfactory.com](mailto:customercare@trynexusfactory.com)

Website: [www.snowexproducts.com](http://www.snowexproducts.com)

This manual has been designed for your help. It will assist you and instruct you on the proper set-up, installation and use of this spreader. Refer to the table of contents for an outline of this manual.

We require that you read and understand the contents of this manual completely (especially all safety information) before attempting any procedure contained herein. Extra copies of Owner/Operator Manuals can be purchased at your Snowex Dealer.



**THIS SIGN SHOULD ALERT YOU:**

The Society of Automotive Engineers has adopted this SAFETY ALERT SYMBOL to pinpoint characteristics that, if NOT carefully followed, can create a safety hazard. When you see this symbol in this manual or on the machine itself, BE ALERT! Your personal safety and the safety of others is involved.

Defined below are the SAFETY ALERT messages and how they will appear in this manual:



**DANGER**

(RED)

Information that, if not carefully followed, can cause death!



**WARNING**

(ORANGE)

Information that, if not carefully followed, can cause serious personal injury or death!



**CAUTION**

(YELLOW)

Information that, if not carefully followed, can cause minor injury or damage to equipment.

### CONGRATULATIONS!

The spreader you have purchased is an example of snow and ice control technology at its finest! Your spreader's self-contained design is a trademark of all Snowex products. Here's why...

**SIMPLICITY:** Fewer moving parts manufactured of higher quality means minimal maintenance for your SnowEx spreader.

**RELIABILITY:** High impact linear low density polyethylene hopper, custom engineered powder coated frame found only on Snowex products.

**VERSATILITY:** Multi-use capabilities allows spreading of a variety of materials for snow and ice control.

**WARRANTY:** Best in the industry, hands down! 2 years standard.

The benefits you are about to recognize are that of time, money and effort.  
We welcome you to the world of Snowex Performance.



Before attempting any procedure in this book, these safety instructions must be read and understood by all workers who have any part in the preparation or use of this equipment.

For your safety, warning and information decals have been placed on this product to remind the operator of safety precautions. If anything happens to mark or destroy the decals, please request new ones from Snowex.



Remember, most accidents are preventable and caused by human error. Exercising of care and precautions must be observed to prevent the possibility of injury to operator or others!



Never operate equipment when under the influence of alcohol, drugs, or medication that might alter your judgment and/or reaction time.



Before working with the spreader, secure all loose fitting clothing and unrestrained hair.



Always wear safety glasses with side shields when working metal against metal. Failure to do this could result in serious injury to the eyes.



Never allow children to operate or climb on equipment.  
Never weld or grind on equipment without having a fire extinguisher available.  
Always check areas to be spread to be sure no hazardous conditions or substances are in the area. Always inspect unit for defects: broken, worn or bent parts, weakened areas on spreader.



Always make sure personnel are clear of areas of danger when using equipment.



Remember, it is the owner's responsibility to communicate information on safe usage and proper maintenance of all equipment.



### CAUTION

Never use wet materials or materials with foreign debris with any of these spreaders. These units are designed to handle dry, clean, free-flowing material.



### CAUTION

Never leave material in hopper for long periods of time. Be aware that all ice melters are hygroscopic and will attract atmospheric moisture and harden up.

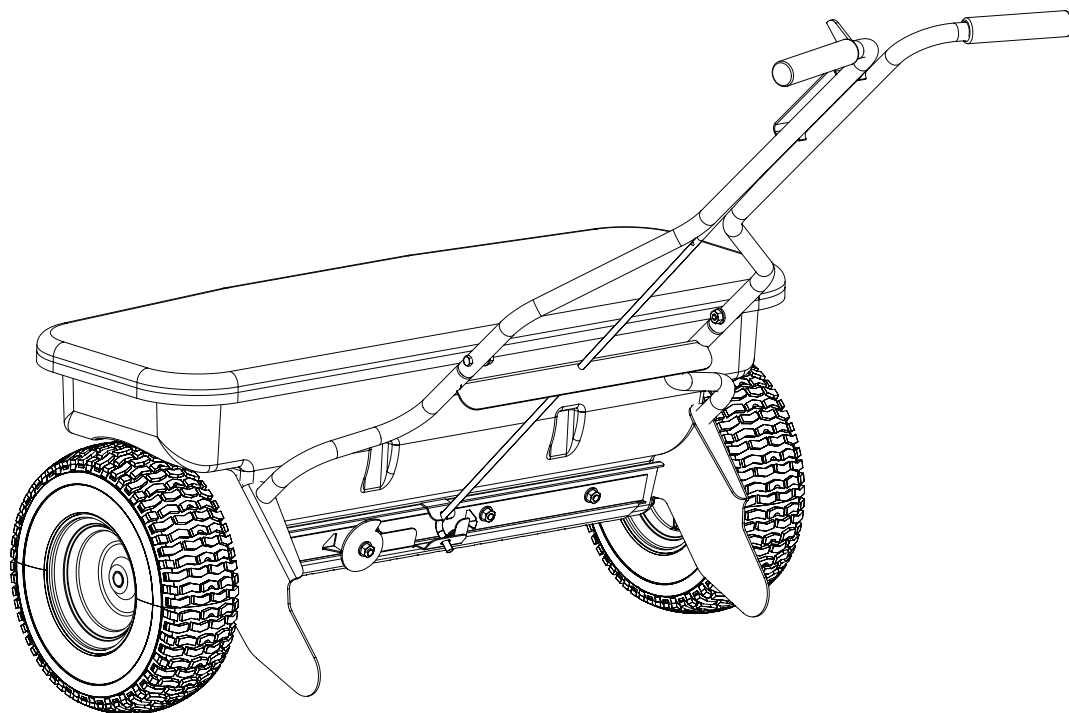
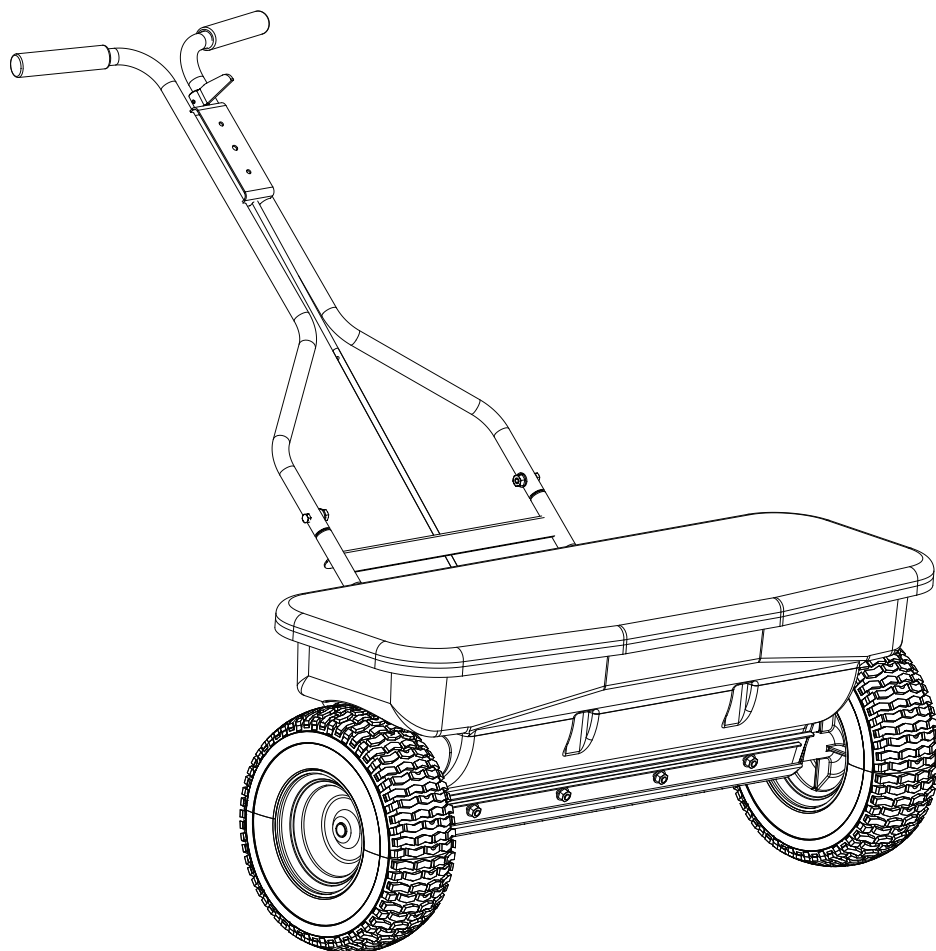


### WARNING

Inspect the unit periodically for defects. Parts that are broken, missing, or worn out must be replaced immediately. The unit or any part of it can not be altered without prior written permission from the manufacturer.

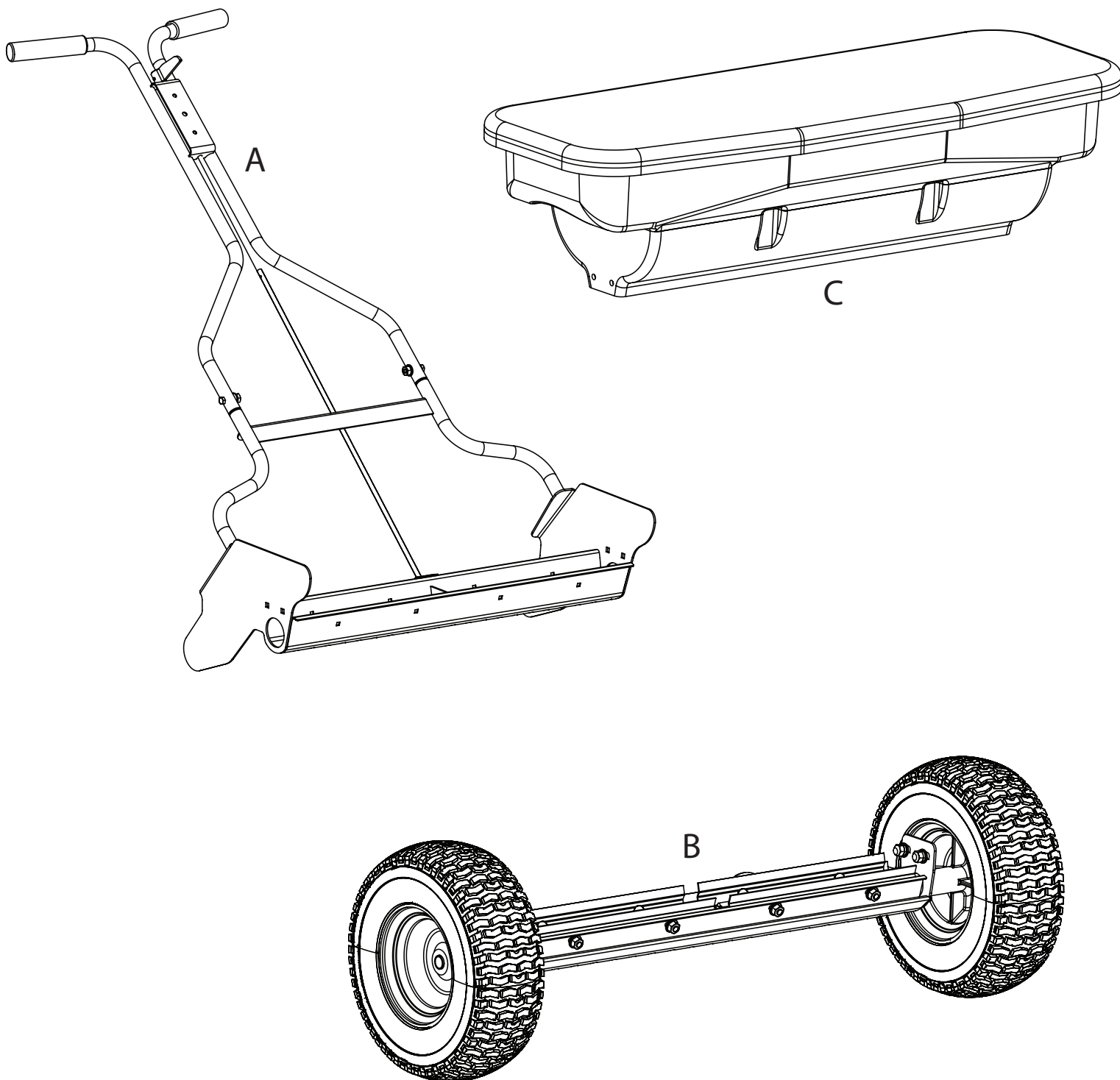
# Main Assembly Views

Model #SD-95



# Sub-Assembly Parts Breakdown

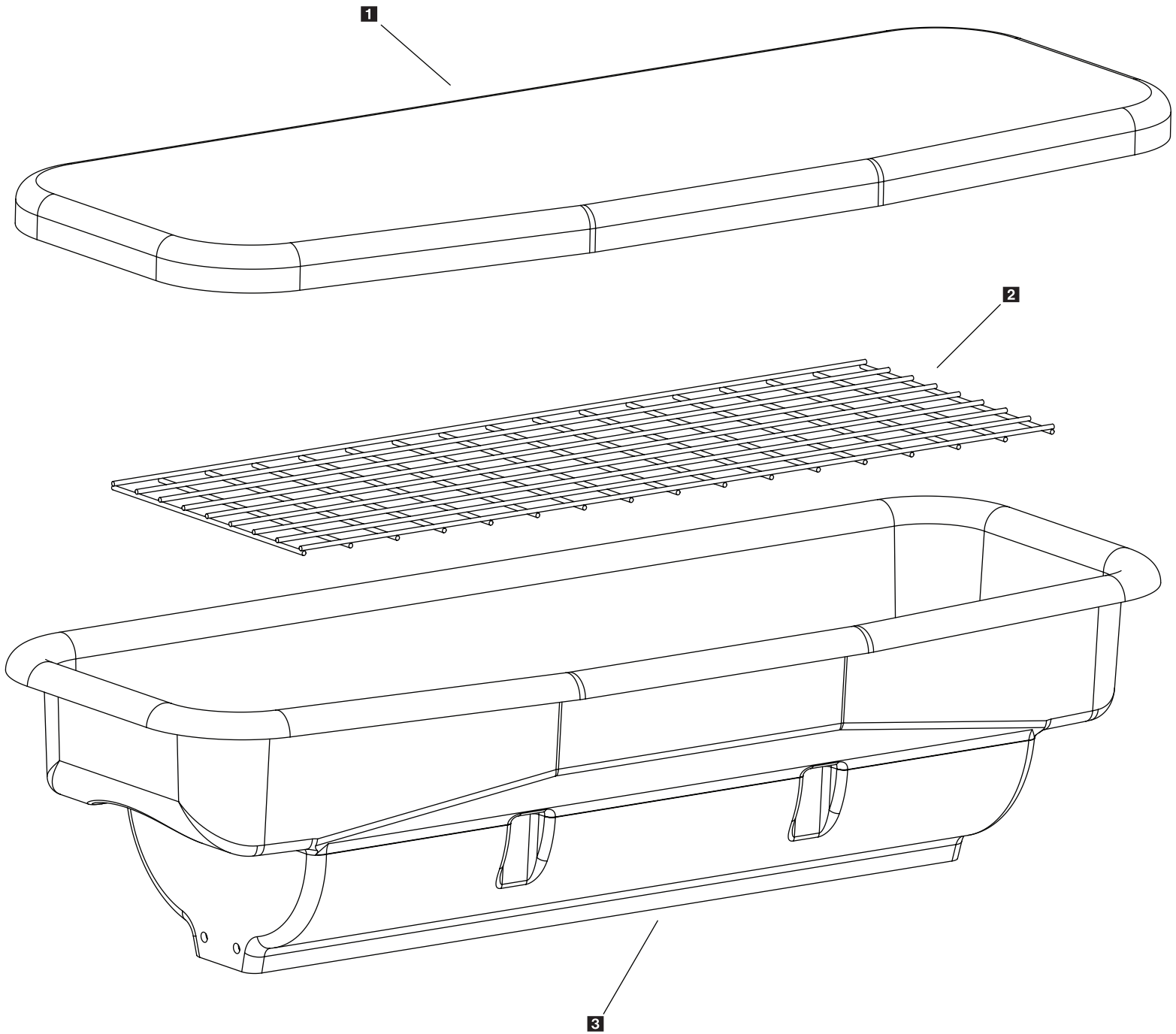
Model #SD-95



Key	Part No.	Description	Qty.
1	A	Main Frame Assembly	1
2	B	Lower Axle Assembly	1
3	C	Hopper Assembly	1

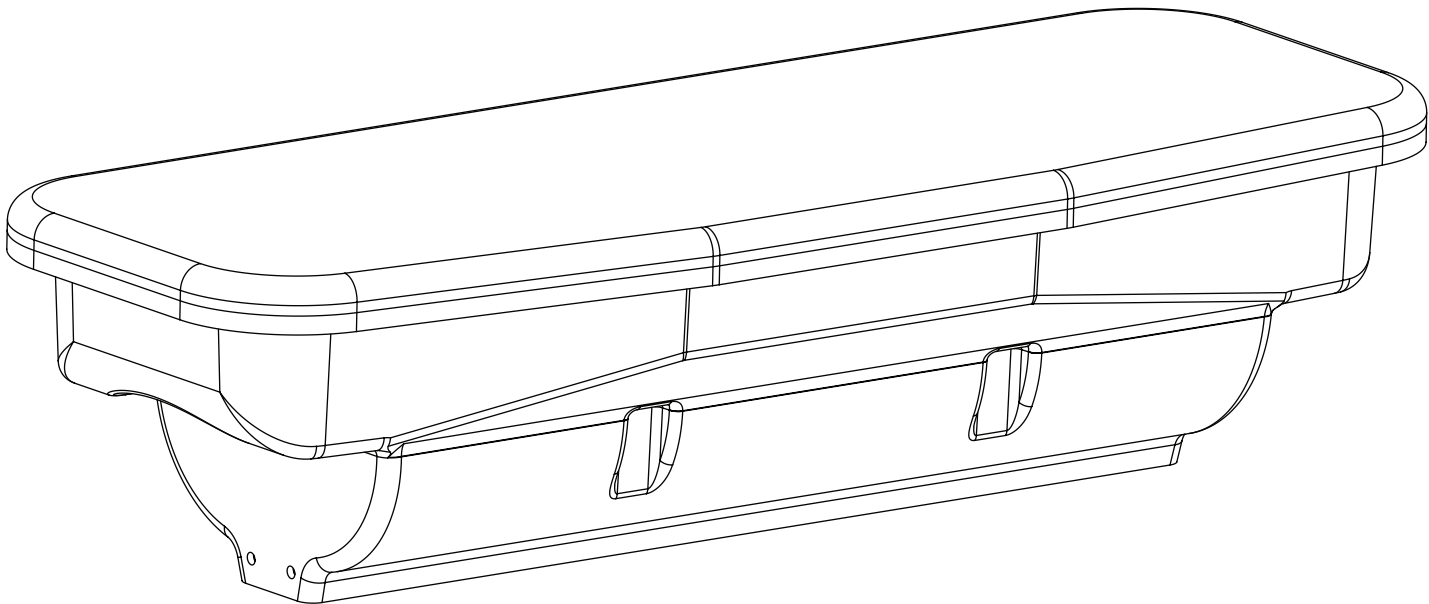
# Complete Hopper Assembly Parts Breakdown

Model #SD-95



# Hopper Assembly Parts Breakdown

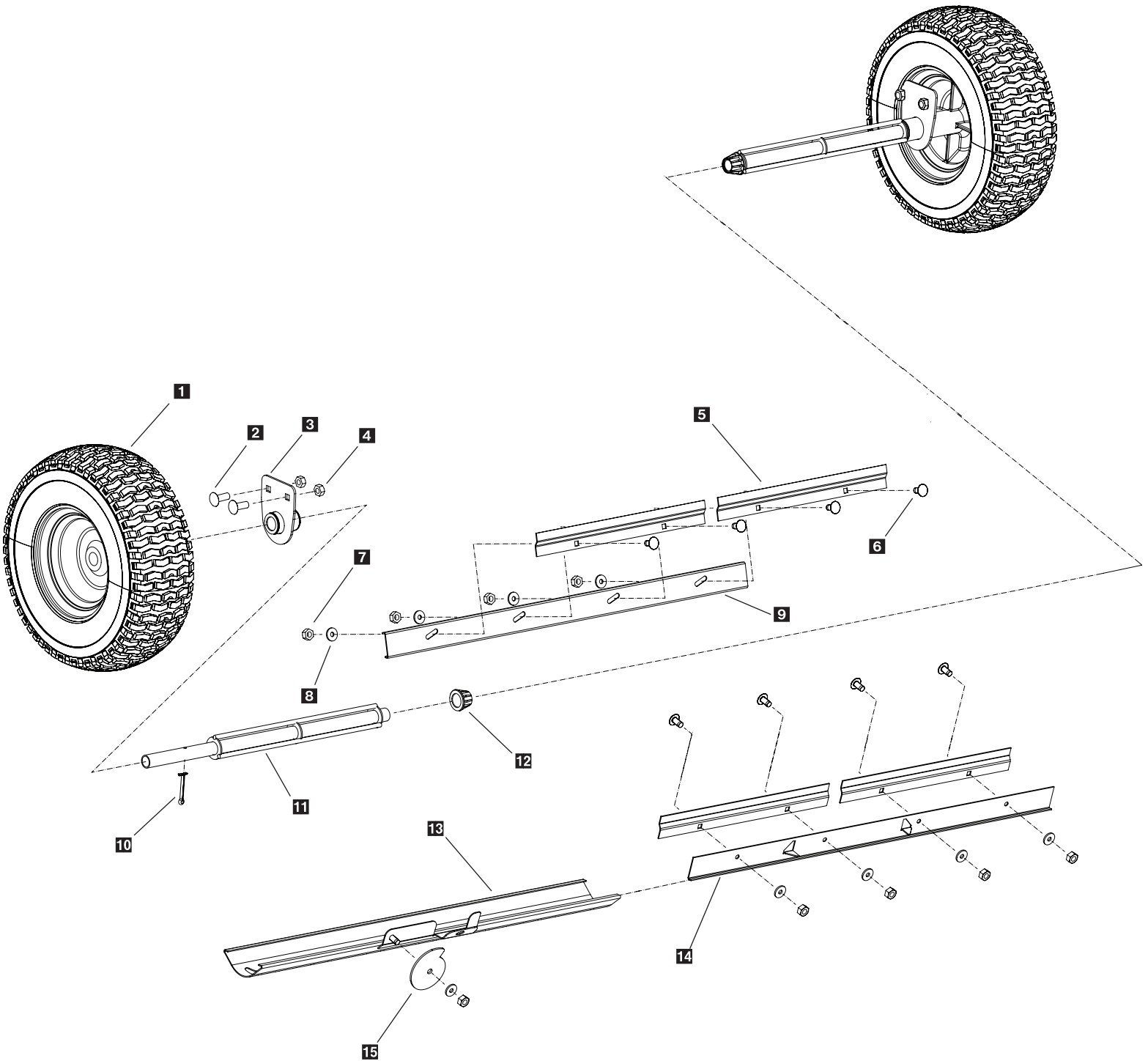
Model #SD-95



Key	Part No.	Description	Qty.
1	D 5020	Clear Cover	1
2	D 5008	Screen	1
3	D 5000	Hopper	1

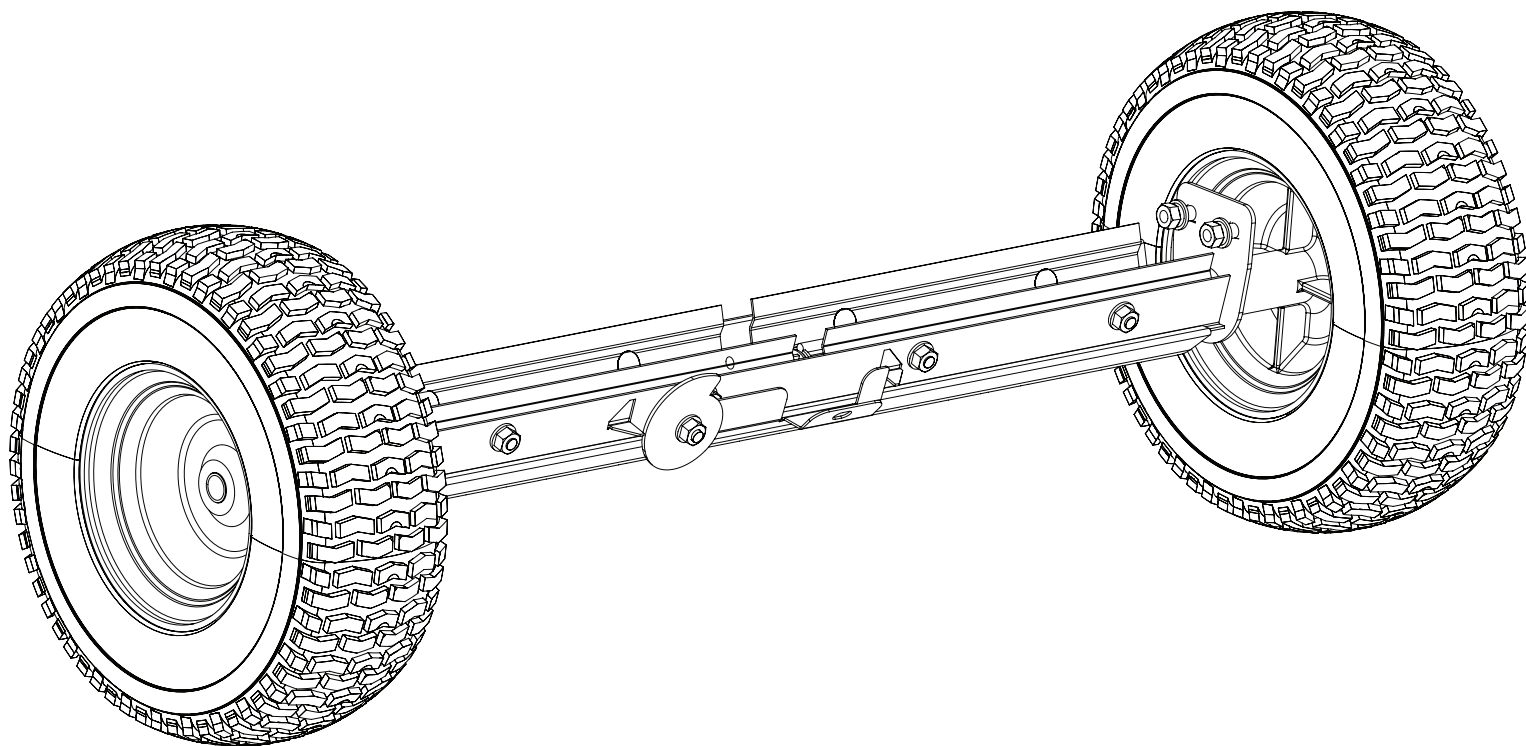
# Complete Axle Assembly Parts Breakdown

Model #SD-95



# Complete Lower Axle Assembly Parts Breakdown

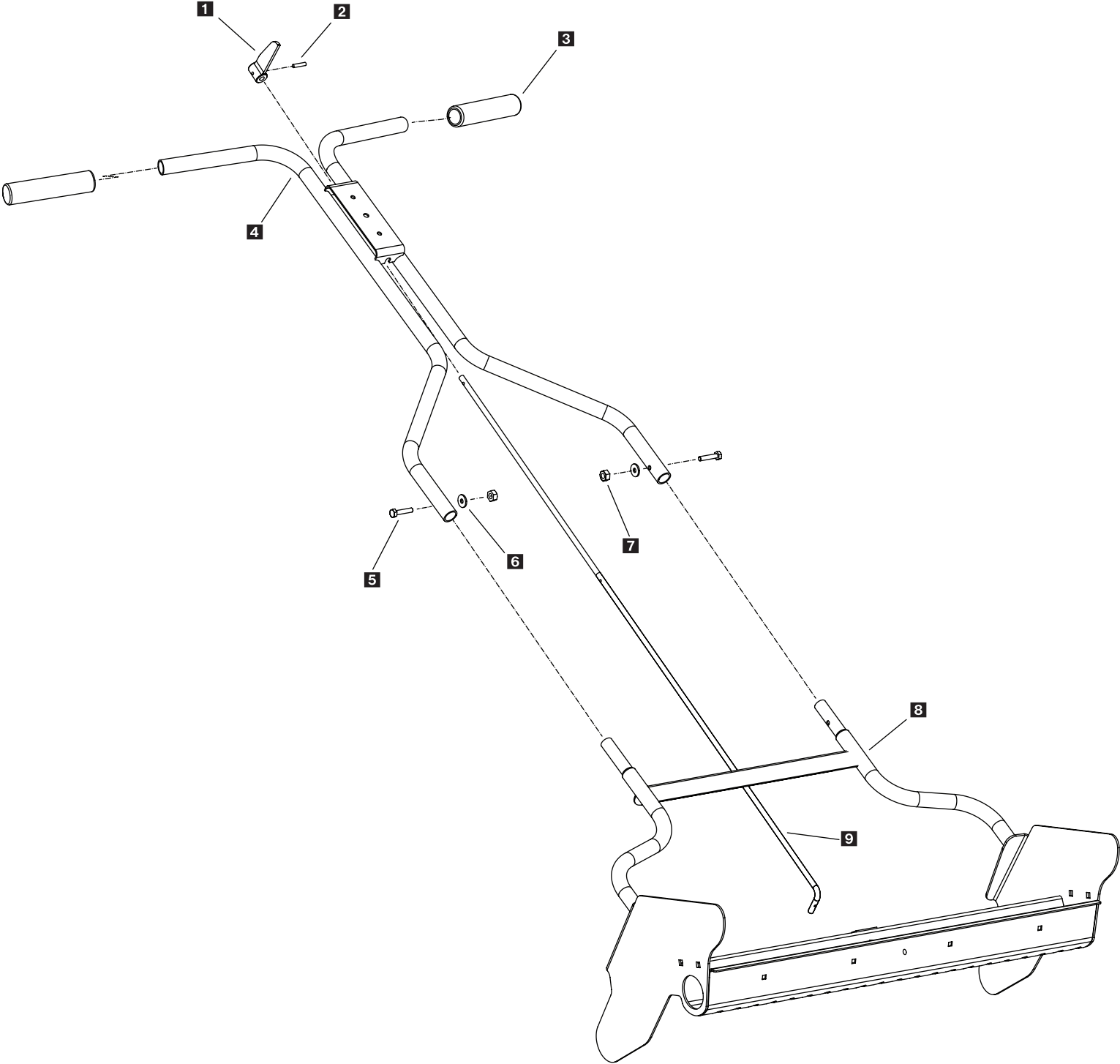
Model #SD-95



Key	Part No.	Description	Qty.
<b>1</b>	D 5904	Wheel	2
<b>2</b>	D 5022	5/16-18 x 3/4 Carriage Bolt SS	4
<b>3</b>	D 5003	Bearing Bracket	2
<b>4</b>	D 5023	5/16 Kepts Nut SS	4
<b>5</b>	D 5014	Clamp Cleat	4
<b>6</b>	D 5021	1/4-20 x 3/4 Carriage Bolt SS	8
<b>7</b>	D 5942	1/4-20 Hex Nut SS	8
<b>8</b>	D 6134	1/4" Lock Washer SS	8
<b>9</b>	D 5009	Adjustment Angle	1
<b>10</b>	D 5919	3/16 x 2" SS Cotter Pin	2
<b>11</b>	D 5001	Agitator Bar	2
<b>12</b>	D 5923	Axle Bushing	2
<b>13</b>	D 5005	Slide Gate	1
<b>14</b>	D 5010	Stop Angle	1
<b>15</b>	D 5006	Calibration Cam	1

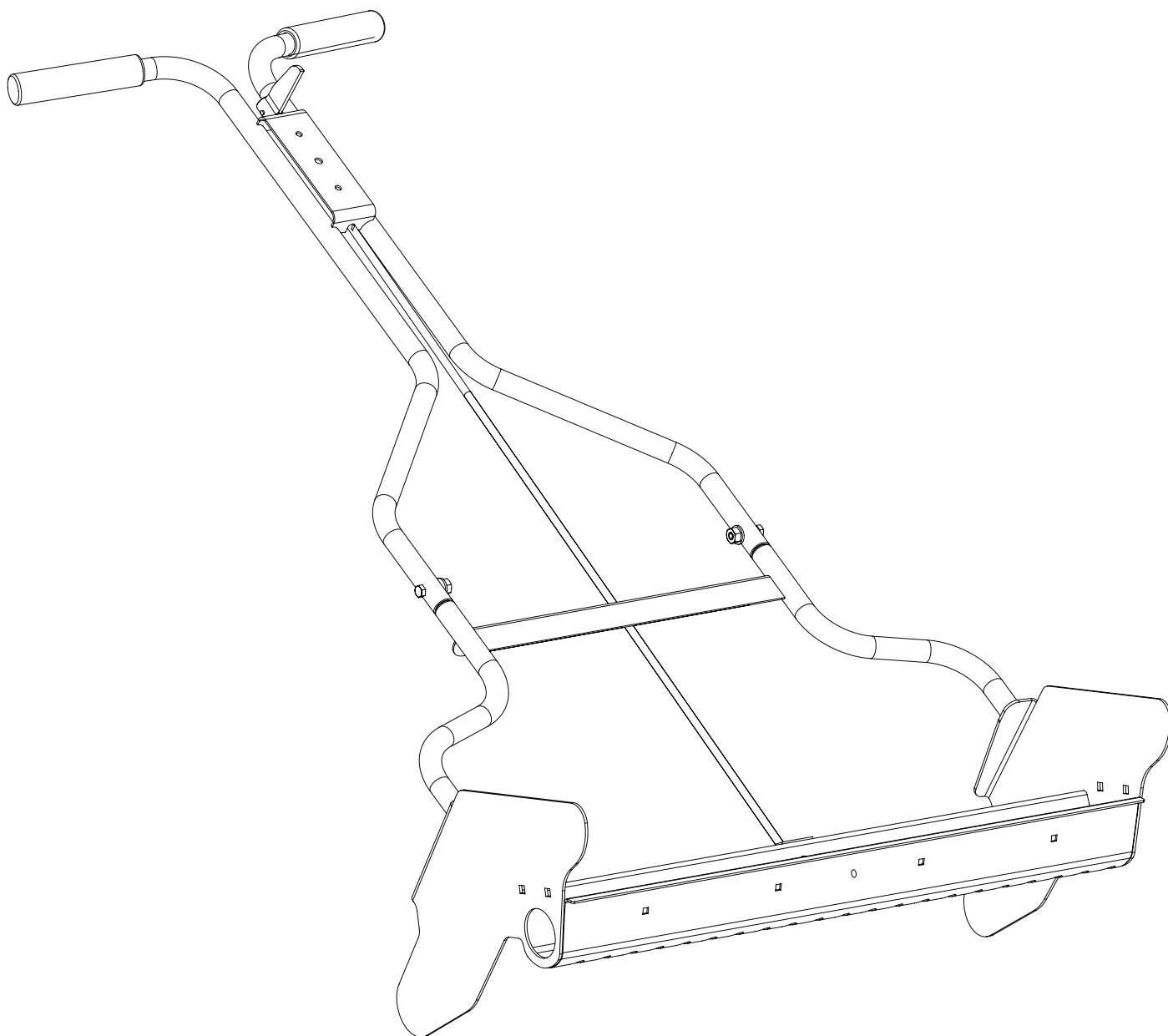
# Main Frame Assembly Parts Breakdown

Model #SD-95



# Main Frame Assembly Breakdown

Model #SD-95



Key	Part No.	Description	Qty.
1	D 5011	Operator Lever	1
2	D 5921	3/16 x 1-1/4 Spring Pin	1
3	D 5917	Handle Grip	2
4	D 5908	Handle Assembly	1
5	D 5907	1/4-20 x 1-3/8 HHSS	2
6	D 6134	1/4 Lock Washer	2
7	D 5942	1/4-20 Hex Nut SS	2
8	D 5002	Main Frame	1
9	D 5004	Actuator Rod	1

# Spreader Assembly Instructions

Model #SD-95

Step 1: Insert rod end into gate slide and lock in place with hair pin clip as shown (see figure 2).

Step 2: Assemble upper handle assembly to main frame (see figure 1), simultaneously insert rod into upper control handle as shown (see figure 3).

Step 3: Attach clear protective cover to hopper.

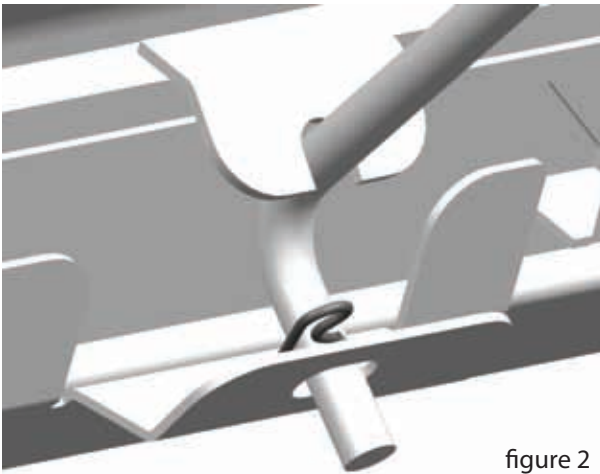


figure 2

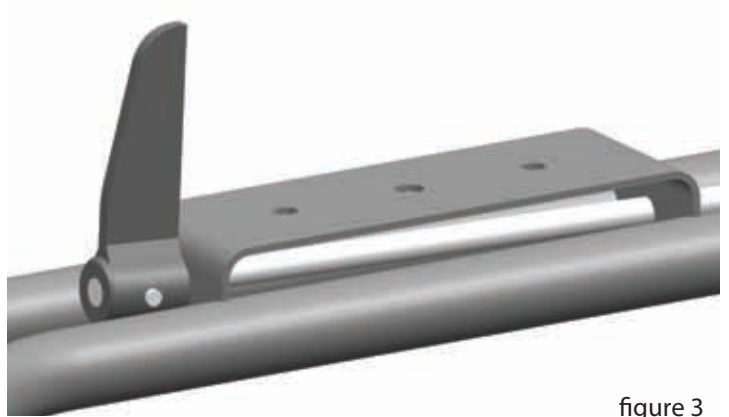


figure 3

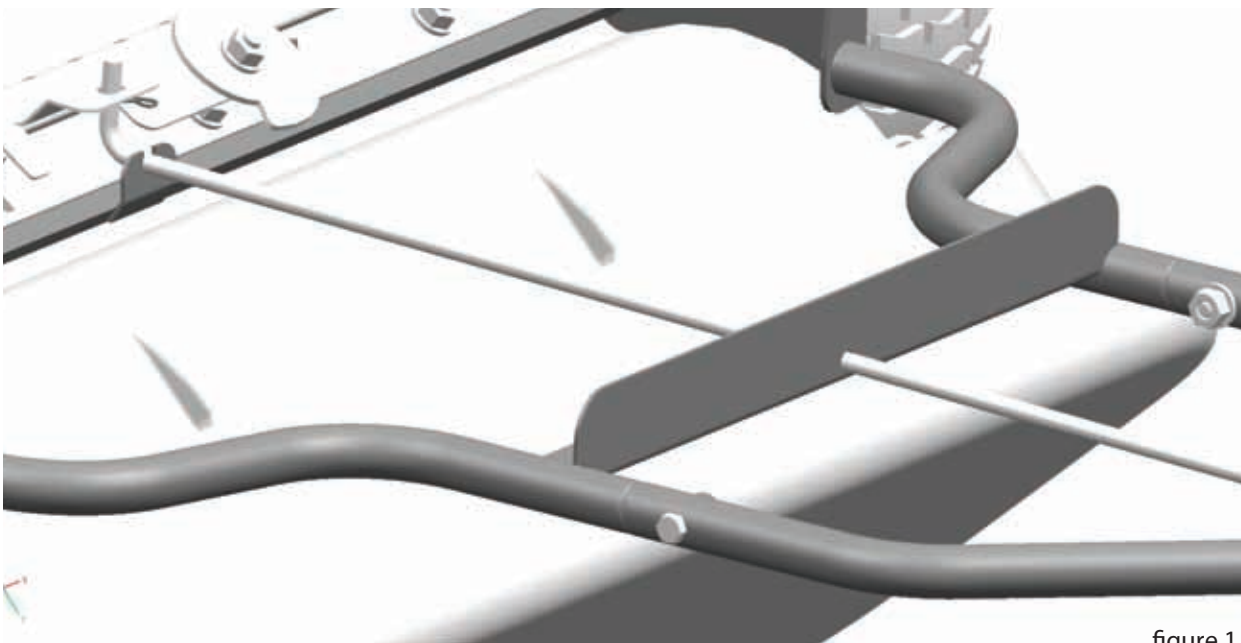


figure 1

## Operating Instructions

### Model #SD-95

#### SPREADER LOADING

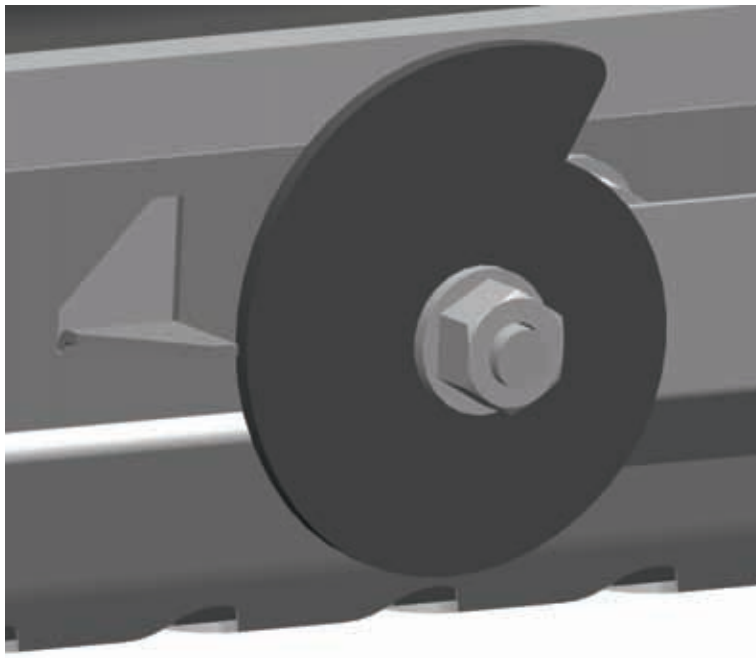
**WARNING** – Do not overload spreader. Use chart below to calculate weight of material. Weights of material are an average for dry materials.

<u>Material</u>	<u>Weight Per Cubic Ft.</u>
Rock Salt	35-40 lbs.

- Warning– Never remove spreader from vehicle with material in it as this could cause damage to the frame assembly.
- Warning– Never leave materials in hopper for long periods of time as salt is hygroscopic and will attract atmospheric moisture and harden up.

#### SPREADING TIPS

- Use care when operating spreader near pedestrians.
- Spread ice melters with the storm to prevent unmanageable levels of ice.
- Adjust material flow by rotating the cam wheel to either increase or decrease gate slide movement, see below.



**THIS PAGE INTENTIONALLY LEFT BLANK**

## Limited Warranty

Snowex products are warranted for a period of two years from the date of purchase against defects in material or workmanship under normal use and service, subject to limitations detailed below. Warranty period of two years begins on the date of purchase by the original retail user.

The WARRANTY REGISTRATION CARD must be returned to the manufacturer for this warranty to become effective. This warranty applies to the original retail purchaser only. This warranty does not cover damages caused by improper installation, misuse, lack of proper maintenance, alterations or repairs made by anyone other than authorized Snowex dealers or Snowex personnel. Due to the corrosive properties of the materials dispensed by spreaders, Trynex does not warrant against damage caused by corrosion. Warranty claims by the user must be made to the dealer from where the product was purchased, unless otherwise authorized by Snowex. Snowex reserves the right to determine if any part is defective and to repair or replace such parts as it elects. This warranty does not cover shipping costs of defective parts to or from the dealer.

### LIMITATION OF LIABILITY

Neither Snowex, nor any company affiliated with it, makes any warranties, representations for promise as to the performance or quality other than what is herein contained. The liability of Snowex to the purchaser for damages arising out of the manufacture, sale, delivery, use or resale of this spreader shall be limited to and shall not exceed the costs of repair or replacement of defective parts. Snowex shall not be liable for loss of use, inconvenience or any other incidental, indirect or consequential damages, so the above limitations on incidental or consequential damages may not apply to you.

NO DEALER HAS AUTHORITY TO MAKE ANY REPRESENTATION OR PROMISE ON BEHALF OF SNOWEX, OR TO ALTER OR MODIFY THE TERMS OR LIMITATIONS OF THIS WARRANTY IN ANY WAY.

NOTES: \_\_\_\_\_

\_\_\_\_\_

\_\_\_\_\_

\_\_\_\_\_

\_\_\_\_\_

\_\_\_\_\_

\_\_\_\_\_

\_\_\_\_\_

\_\_\_\_\_

\_\_\_\_\_

\_\_\_\_\_

\_\_\_\_\_

\_\_\_\_\_

\_\_\_\_\_

\_\_\_\_\_

\_\_\_\_\_

\_\_\_\_\_

\_\_\_\_\_

\_\_\_\_\_

\_\_\_\_\_

\_\_\_\_\_